

The Mini Scroll

A Productive Year in Review

BY DR. ANN KARTY, PRESIDENT

Congregation Beth Shalom is a diverse, egalitarian, conservative Jewish community striving to enhance life-long connections to Judaism and to each other through prayer, spirituality, learning and friendship.

Beth Shalom strives to be a synagogue of dedicated, involved congregants:

- Passing on the traditions and values of Conservative Judaism to the next generation and beyond

- Committing ourselves to life-long learning
- Repairing the world through acts of loving kindness

- Supporting one another in times of joy, sorrow and need

- Growing an engaged base of volunteers

- Ensuring continuity of our synagogue community through responsible fiscal management

Hopefully, these phrases are familiar. They are Beth Shalom's mission and vision and they remain at the core of everything we do and the basis of our decision-making. I invite you to pause and reflect about how those phrases apply to your relationship with Beth Shalom.

I'd like to share some personal thoughts about this past year.

- Last summer, we joined two groups. Much like a marriage, we connected two families and integrated two cultures.

- We paid off the note on the current building, broke ground on our new Sacred Space, and moved water lines for the city of Overland Park. The foundation has been poured, walls will soon be going up, and we are slated to open the building in spring 2024. Again, thank you to the many generous donors with pledges of nearly \$15M that helped to make this happen.

- For those of you considering making gifts beyond brick and mortar, this is your opportunity to enhance future programming and engagement. Please reach out to Stef Williams, Rabbi Glickman, Gina Kaiser or Ron Coppaken who can help you make this happen.

- Our Education Director Civia White continues to enhance religious school activities, our Youth Director Ben Novorr works with our teens in programming, and Judy Jacks Berman continues to direct our successful Early Childhood Education program.

- We pray with traditional services in Gold-

smith Hall and the Lower Level Prayer Space, as well as musical Shabbat services Shir L'Shabbat (continuing our northern presence) and Tefillateinu. Torah Learning classes enhanced our Shabbat experiences, and we have Tot Shabbat and elementary school-age services. We daven with traditional tunes and we practice new melodies with Rising Song.

- Educational initiatives for adults will continue during the next year (think trope classes, both basic and advanced, Torah for Lunch, and Peltzman).

- The Northern Presence Committee is planning programs at locations around the metro. Look for more information as those events are finalized.

- Keep an eye out for family engagement opportunities, integrating Simchat Torah/Sukkot experiences, and Shabbat Around the World Dinners.

Thank you, Rabbi Glickman, Rabbi Padorr, and Hazzan Ben-Yehuda. Your leadership has guided us spiritually. Over the next year, Rabbi Kaplan will join to participate in all aspects of our collective synagogue life.

Thank you to Stef Williams, our executive director, for having such flexibility and a "can-do" attitude with everything at the synagogue.

I am grateful to all our loyal teachers, support staff, maintenance crew, and cemetery team. You help our congregants, our families, and our children in many ways, too numerous to list, and definitely appreciated. Much appreciation and gratitude to the Board of Directors, our committee chairs, and our loyal group of volunteer synagogue members that help with all kinds of tasks (here's just a few): scheduling and participating in Torah and Haftarah readings, attending minyanim, cooking and setting up Shabbat morning kiddush (with the Kiddush Corps), delivering challah to our new members, and filling mishloach manot bags. Our dedicated crew of volunteers also supports Lechem, Chesed, Membership, Building and Grounds, Administration, and other synagogue committees.

Of course, we're always recruiting for more helpers with manpower hours and financial costs for new challenges.

Thank you to the entire membership for being a part of our synagogue family. Cheers to what our future together will bring!



President Dr. Ann Karty speaks at the annual meeting on June 11, 2023.

IN THIS ISSUE

- Annual Meeting Updates from the President
- Message from the Executive Director
- Sacred Space Building Update
- Youth & Family Update
- RFECEC Update
- PRS Update & Second Grade Torah Service Photos

*Please note,
Congregation Beth Shalom
offices will be closed on
Tuesday, July 4
in honor of
Independence Day.*

Building Update: On Time & On Budget!

BY GINA KAISER, SACRED SPACE
BUILDING COMMITTEE CHAIR



The construction of the sanctuary and renovations to the existing building are on track for completion in spring 2024. The steel just went into the fabrication process and we hope to see the steel rising in July.

We are on budget for the construction. The budget contains a substantial amount of contingency dollars that we believe will be sufficient, but we will probably spend all the contingency funds. Those of you who have built anything know that changes occur once the actual construction is underway, and those changes are always cost increases, not decreases.

To date, we have raised almost \$15M. We were able to accomplish this goal because of

the generosity of numerous donors, some of whom made multiple substantial pledges.

Many of you will recall that we had significant cost increases as a result of Covid and the resulting supply chain issues—increases of almost 25%. What that means for us is that the money we had for the endowment to cover increased operating expenses has to go to bricks and mortar. That shortfall is \$1.5M.

In order to be fiscally responsible and not saddle future generations with a financial burden, we have a plan to raise this additional money. Some congregants will receive personal calls and visits from us, but we cannot personally reach everyone.

Therefore, I ask you to think about a generous pledge—or an additional pledge—one that is meaningful according to your financial means. You can pay it over a period of years, and it can be in cash, stock, or an IRA distribution, just to name a few payment methods. We need everyone to participate. This is YOUR synagogue; all of you, at some time, will attend services in the new sanctuary, or hold a lifecycle event there. Please think seriously about giving or giving again, and contact Stef Williams (swilliams@bethshalomkc.org) Ron Coppaken (roncoppaken@aol.com), Rabbi Glickman (dglickman@bethshalomkc.org) or me (gkaiser447@gmail.com).

MINYANAIRE OF THE MONTH: BERNIE FRIED

"I have been attending morning minyan occasionally since 2009, and daily six days a week since 2013, when my mother passed. There were days when we did not have 10 attendees, and we made phone calls to try to round up the one or two we needed. It was then I realized the importance of supporting all those who, like me, need a minyan to say Kaddish or yahrtzeit in their time of need. My synagogue family was here for me when I needed them, and I promised myself I would always be there to support them."





Community Conversations

Aging Parents

A workshop to educate and support adult children on how to prepare for and assist parents entering the next stage of life. Learn the steps to prepare for the transition of assisting your parents. Ensure everyone feels supported, protected and educated. Get strategies to make this transition easier and learn the various options available.

Hear from experts in: Older Care Management, Legal, and Therapeutic.

Tuesday, July 11th
6:30PM - 8PM
at the J KC

For more information, please contact
JFS Mental Health Programs jperlmutter@jfskc.org 913 327-8259



Remembering an Exciting Year for KCUSY at Beth Shalom

BY BEN NOVORR, YOUTH & FAMILY PROGRAMMING DIRECTOR

It's been a busy year for KCUSY, and we wanted to share a brief overview of what this year had to offer for our teens:

- Weekly lounge nights for our 9th-12th graders
- S'mores and Sloach (slow ruach) including the creation of an official KCUSY songbook
- Kadima (6th-8th grade) bowling party
- Harvest and Havdalah in the Mitzvah Garden with NCSY and BBYO
- Huge Simchat Torah birthday bash
- Space-themed night with space snacks, glow in the dark crafts, and a Star Wars viewing party
- 17 teens attending Fall Kinnus in Minnesota which included a trip to Mall of America
- Ice Skating at Chicken N Pickle
- 6 teens attending Winter Shabbaton in St. Louis, including a visit to City Museum and delivering donations to a homeless shelter
- Gesher Kinnus hosted here in Kansas City, attended by nearly 60 middle schoolers from across the region
- "Make Your Own Pizza Night" and evening at Main Event with a group of vis-

iting Israeli teens, BBYO, NCSY, and HBHA!

- Kadima potluck and game night in the youth lounge
- Two KCUSYers, Ellie Glickman and Nina McNay, were elected to the EMTZA Regional Board
- 28 teens from KCUSY attended Spring Kallah in Ogden, Iowa, the most of any chapter!
- Hosted a "Dog Night," where teens brought their dogs to play while we enjoyed ice cream
- Attended the HBHA school play "Radi-um Girls," which featured tons of Beth Shalom teens
- Hosted an end-of-the-year Karaoke Night with a dessert bar

We've already started planning tons of exciting programs and events for next year, so please keep an eye out, as you will start seeing announcements very soon!

Thank you to all of you, who have been such fantastic supporters of KCUSY programming! We truly would not be able to provide such an extensive array of experiences to our teens if it weren't for you!

Have a wonderful summer!

Wrapping Up A Joyful Year at Rose Family Education Center

BY JUDY JACKS BERMAN, EARLY CHILDHOOD EDUCATION DIRECTOR

We have had such a wonderful 2022-2023 school year! Our children learned about all the Jewish holidays and weekly Shabbat. The students loved celebrating the end of each week with Shabbat and a Shabbat party, then starting Monday morning with Havdalah!

Our children learned Jewish values as well as the parshat of the week. They learned how to count in Hebrew, their colors and body parts in Hebrew as well as many prayers, vocabulary and lots of Hebrew songs. We enjoyed puppet shows, juggling and mime shows, concerts, farm animals as well as visits from exotic animals.

On top of daily art projects, lots of cooking, hundreds of stories read, and songs sung, it's been an amazingly busy wonderful year.

Every Friday before lighting candles, the children gave tzedakah. At the end of the year, the children voted on where to do-

nate their \$400. They wanted half of their money to go to the Jewish Family Services' Pantry and half to Wayside Waifs.

As I begin my 30th year at Beth Shalom Rose Family Early Childhood Education Center, I would like to share many of the joys I have gotten from this incredible job! The thousands of smiles, high-fives and hugs have filled my heart for all these years! Seeing so many of my former kids as youth group leaders, leaders in the Jewish community and now parents themselves has been so gratifying and joyous for me! I am so blessed to have a job that I have loved coming to every day! The faculty and parent body are incredible to work with and share my life with. Everyone should be this lucky to have a job they love!

I am looking forward to a great 2023-2024 school year! Happy Summer!

Now Accepting Simcha Reservations for Our New Sanctuary



Image: Digital rendering of the new sanctuary from Preston Scott Cohen, Inc.

Our beautiful new building will be reality before we know it. The Beth Shalom office is now accepting simcha reservations through 2028 for your weddings, anniversaries, b'nei mitzvahs, and other simcha lifecycle events. The new sanctuary will be able to hold up to 500 guests, and kosher catering can be arranged. The calendar is already filling up, so don't delay in getting your simcha booked. **Contact Executive Director Stefanie Mislér Williams at swilliams@bethshalomkc.org to discuss your event needs.**



Ben Novorr Visits Israel

Beth Shalom's Youth & Family Programming Director Ben Novorr recently co-led a Birthright trip to Israel. In late July, Ben will be visiting Camp Herzl and Camp Ramah, both in Wisconsin, to spend time with Beth Shalom campers. Safe travels!



Ending the School Year PRS-Style!

BY CIVIA WHITE, YOUTH & FAMILY EDUCATION DIRECTOR

Mazel Tov to all of the students and teachers on the completion of the school year. Right up to the very last day, PRS was buzzing with activity.

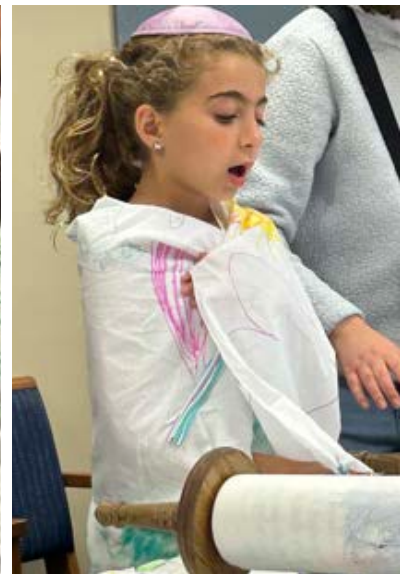
Our second graders presented a Torah Service! They wore tallitot they made and read from a scroll that they had added to each week. It was awesome to be in the room with so many supportive parents and Jamie Katz, our amazing second grade teacher. The children decorated cookies and celebrated the occasion with the entire school at our end of the school year party. Well done!

The sixth graders and their parents worked together to attach tzitzit to the tallitot that the class made in Jewish Art with Beth Albee. The families enjoyed working together on a Jewish ritual item; I can't wait to see the kids wearing their creations next school year.

PRS will miss the Albee family! We presented them with a

Mezuzah from the Sisterhood gift shop and know that they will think of us when they come and go from their new home in Georgia. Beth's final project with the school is on permanent display at the top of the steps to the school. Each child was asked to write and illustrate an 11th Commandment. Please stop by and take a look at these beautiful and insightful creations. PRS kids understand the importance of Jewish values in everyday life. We are so proud of them!

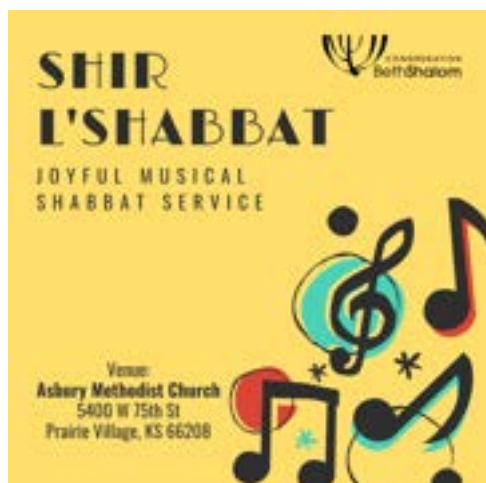
Interested in getting an early start at PRS? Next school year there will be a Pre-K class one Sunday a month. It will run from 9:30 am to 12:00 pm. Art projects, Torah stories, Hebrew songs, and learning Jewish values are central to the curriculum for this pilot program. Registration is now open for Pre-K, and all classes, for PRS 2023-24 at this website: <https://bit.ly/3VIftWM>



Registration for PRS 2023-24 is now open!
Jewish Education for Pre-K through 10th grade
Visit bit.ly/3VIftWM or scan QR code to sign up.



UPCOMING EXPERIENCES AT CONGREGATION BETH SHALOM



Shir L'Shabbat Musical Service

Saturday, July 8 at Asbury Methodist
Join us for this joyful musical Shabbat service led by Rabbi Beryl Padorr.



Erev Tisha B'Av Community Event

Wednesday, July 26 at 8:30 pm
RSVP at KCRabbi.org.



Tisha B'Av Morning Service

Thursday, July 27 at 7 am in Goldsmith Hall
Join us for Morning Minyan followed by the reading of Eicha (Lamentations).

What Jews Do: We Show Up

BY STEFANIE MISLER WILLIAMS, EXECUTIVE DIRECTOR

The past few weeks have been intense. We have had to say goodbye to several beloved friends and congregants. We attended funerals and shiva minyanim. We did what we, as Jews, do. We show up. Showing up means so many different things. Yes, it can simply mean we actually physically show up. But we can show up in so many other ways. We bring food (way too much). We send countless texts and leave so many messages. We look for ways to help. We try to be there for the mourners in any way we can and in whichever way they may need. We hug a little longer and a little tighter. We try to take a little bit of their grief and make it our own. Anything we can do to alleviate any of their pain. Not just because it hurts us to see them hurting, but because it is what we do – it is a part of our tradition. We show up.

My own children have stood by their friends at shiva minyanim from a very young age. They understand that this is what we do. When my dear friend recently lost her father, it was important to Amos that he come with me to shiva. He will become a bar mitzvah in a year, yet he already gets the significance of showing up. Ayla planned to go with me to my friend's house on Shabbat and help make a minyan so they could say Kaddish. A bunch of her friends came to our house right before we left, but there was never a question that she was going to show up.

When we found out they needed another person to make the minyan, one of Ayla's friends was happy to join us. The person leading the teaching that evening spoke to them and focused on the importance of b'nei mitzvah. The importance of what they did. They showed up. They didn't know my friend's dad. They barely knew anyone in the room. But they knew that this is what we do. We show up.

And so, I have been a bit emotional. Between feeling all the loss and holding back tears... but also feeling the pride. Feeling the connection to Jewish people everywhere. Discussing with my friends how even in difficult times, we see the ways our tradition keeps pulling us together. Showing us the light, even through the darkness. The way our tradition guides us time and time again.

And, a few days later, I got the full circle moment. One of my old students, a former USYer, became a father to his son and I got to show up. I was lucky enough to celebrate at a brit milah. I got to witness another one of our amazing traditions. To share in the simcha of something so extraordinarily special. Again, we hugged a little longer and a little tighter. This time the tears were filled with dreams of what is yet to come. I felt the joy and the pride – because our tradition has always encouraged me to show up.

COMMUNITY CONVERSION PROGRAM NOW ENROLLING

Do you know someone considering conversion to Judaism and seeking a comfortable forum to learn more about the fundamentals of Jewish thought and practice? Interested candidates are asked to contact the Rabbinical Association to learn how they can register to participate in this year's community-wide course "Judaism for Conversion Candidates" which begins August 17.

The comprehensive year-long course is designed for adults and taught on a rotating basis by rabbis from the Reform, Conservative, Orthodox, and non-denominational movements.

To register, contact Annette Fish at afprogram@aol.com or 913-327-8226.



TODAH RABBAH!

תודה רבה

Contributions through June 14 are listed below. Thank you for thinking of us.

BETH SHALOM GENERAL FUND

In Appreciation of
G-d, Congregation
Beth Shalom, and
my supportive
family

Hannah Silverman

In Memory of

Nathan Baraban
Diane More

In Memory of

David Berey
Barbara & Stephen
Abend

In Memory of

Moses Berger
Arthur & Margaret
Berger

In Memory of

Max & Sadie
Clemensberg
Marietta Dunn

In Memory of

Celia Cohen
Steven Cohen

In Memory of

Gertrude Epstein
Debra & Michael
Faigen

Brian & Roberta
Miller

In Memory of

Timothy Wilson
Finnegan

Stuart & Sharon Pase

In Memory of

Max Fox
Geraldine Goldberg

In Memory of

Ella Glazer
Paulette & William
Ramm

In Memory of

Jack S. Glazer
Paulette & William
Ramm

In Memory of

Betty Goldstein
Stuart & Sharon Pase
Jonathan & Ellen
Chilton

In Memory of

Sybil Kahn
Hanan & Natalie
Hammer
Jennifer Schmidt

In Memory of

Harold Klopfer
Barbara Cosner
Elliott & Katharine
Hollub

In Memory of

Jennie Lazarus
Stephen & Rebecca
Levine

In Memory of

Michael Milens
Barbara Cosner

In Memory of

Adolph Stern
Reuben & Mary Jane
Stern

In Memory of

Fannie Stolov
Ronald Schiffman &
Sheila Stolov

In Memory of

Gary Lee Tabolsky
Rochelle Bell

In Memory of

Celia Ziegelman
Steven Cohen

In Memory of

Shlomo Gerson
Ziegelman

Steven Cohen

In Memory of

Max Zurovsky
Debra & Michael
Faigen

Brian & Roberta
Miller

BEVERLY & HARVEY BODKER ENDOWMENT FUND

In Memory of

Sam Bodker
Betsy Bodker

In Memory of

Ira Friedson
Betsy Bodker

BUILDING FUND

In Memory of

Leonard Enslein
Jerald Enslein &
Hannah Harris

In Memory of

Betty Goldstein
Jeffrey & Carol Katz
Ronald & Harryette
Cooperman

In Memory of

Sybil Kahn
Deborah Finkelstein

CEMETERY MAINTENANCE FUND

In Memory of

Anna Ace
Harry & Hedra
Merson

In Memory of

Sally Ace Glass
Harry & Hedra
Merson

In Memory of

Betty Goldstein
Howard & Lisa
Feingold

FRANK SCHLOZMAN SCHOLARSHIP FUND

In Memory of

Irene Malyn
Michael & Wendy
Malyn

In Memory of

Frances Schlozman
Michael & Wendy
Malyn

In Memory of

Bessie Sokolov
Michael & Wendy
Malyn

GERSHON HADAS SCHOLARSHIP FUND

In Memory of

Anne Hadas
Hedva Glickenhau

In Memory of

Fannie Rosenbloom
Michael & Hue Tran
Green

HARRY & ANITA DANIELS CAMP RAMAH SCHOLARSHIP FUND

In Memory of

Harry Daniels
Robert & Cindy
Daniels

HAZZAN BEN-YEHUDA'S DISCRETIONARY FUND

In Appreciation of

Hazzan Tahl
Ben-Yehuda
Byron & Gerri
Ginsburg
Steven & Lori
Greenberg
Deborah Rosenberg

In Honor of

Rabbi Scott &
Civia White son's
wedding

Hanan Steinzeig &
Rita Brown

In Memory of

David Berey
Stephen Feinstein &
Eileen Cohen

In Memory of

Marjorie Brodtkin
Hanan Steinzeig &
Rita Brown

For the speedy

recovery of
Scott Bronston's
brother

Hanan Steinzeig &
Rita Brown

KCUSY FUND

In Memory of

Sybil Kahn
John Goldberg &
Marla Brockman

MARCIA EVELOFF LECHEM FUND

In Memory of

Sybil Kahn
Harold Kaseff
& Rhea Salasche

In Memory of

William Abramson
Robert & Cindy
Daniels

In Memory of

Norman Bresel
Kenneth & Sandra
Lerner

In Memory of

Betty Goldstein
Robert & Cindy
Daniels

In Memory of

Estelle Grundstein
Kenneth & Sandra
Lerner

In Memory of

Harold Klopfer
Kenneth & Sandra
Lerner

In Memory of

Michael Milens
Kenneth & Sandra
Lerner

MERNA & SYLVAN SIEGLER FUND FOR JEWISH CAMPING

In Memory of

Sam Agron
Merna Siegler

In Memory of

Sybil Kahn
Merna Siegler

In Memory of

Dr. Irwin Waxman
Merna Siegler

MORRIS & ROSE WEINBERG FUND FOR CAMP SHABBAT

In Memory of

Marjorie Brodtkin
Stephen Weinberg

MT. CARMEL TRUST

In Memory of

Rabbi Solomon
Rosenberg
Deborah Rosenberg

OHEV SHOLOM- DENTON PRAYERBOOK & RELIGIOUS ITEMS FUND

In Memory of

Jacob Leon Turetsky
Sheldon & Joan
Turetsky

In Memory of

Dr. Irwin Waxman
Sheldon & Joan
Turetsky

In Memory of

Ruben & Jenny
Weinhouse
Sheldon & Joan
Turetsky

OHEV SHOLOM- ENID/SHALOM OFFENBACH FUND IN SUPPORT OF PASSPORT TO ISRAEL

In Memory of

Marjorie Brodtkin
Mark Litchman

In Memory of

Sybil Kahn
Mark Litchman

In Memory of

Frank Litchman
Mark Litchman

OHEV SHOLOM- LEGACY & HERITAGE FUND

In Memory of

Anne Kaplan
Mark & Trudy Slatkin

POLSKY RELIGIOUS SCHOOL FUND

In Memory of

Tami Yavitz
Deborah Rosenberg



TODAH RABBAH!

תודה רבה

Contributions through June 14 are listed below. Thank you for thinking of us.

RABBI GLICKMAN'S DISCRETIONARY FUND

In Appreciation of

Rabbi David Glickman
Byron & Gerri Ginsburg
Steven & Lori Greenberg
Norman Kahn Jr. & Diana Winyard
Samyra Marks
David & Lynne Bock

In Honor of

Andy Reiz's 103rd birthday!
David Feingold & Trudi Galblum and your nieces & nephews: Anita, Bari, David, Buzzah, & Micah

In Honor of

Jeremiah Wajcman on becoming bar mitzvah

Deborah Rosenberg

In Memory of

Mike Milens
Karen Leeds

ROSE FAMILY EARLY CHILDHOOD EDUCATION CENTER

In Memory of

Marc Hurwich
Estelle Berman

In Memory of

Marlene Hurwich
Estelle Berman

In Memory of

Sybil Kahn
Jeffrey & Corrine Blackman

In Memory of

Stanley Katz
Marlene Katz

In Memory of

Melvin Raskin
Sandra Raskin

In Memory of

Edith Rose
Estelle Berman

SAM & ESTHER DANIELS PRAYER BOOK FUND

In Memory of

Sam Daniels
Robert & Cindy Daniels

SHIR L'SHABBAT

In Memory of

Dr. Irwin Waxman
Lois Clayman & Marcia Fagin

SIDNEY GINSBURG ENDOWMENT FUND

In Memory of

Sam Agron
Marilyn Cohen

TOT SHABBAT FUND

In Memory of

Sara Rosenberg
Deborah Rosenberg

Mazel Tov to Our July Anniversaries

Sponsor a kiddush luncheon by contacting Melisa at 913-647-7281 or ritualassistant@bethshalomkc.org.

DAY		YEARS	DAY		YEARS
1	Joel & Jean Bratt	39	16	Scott & Lori Myron	17
1	David & Erica Bush.	33	17	Howard & Lorri Coppaken	8
1	Andrew & Amy Nemiccolo	22	18	Trevor & Katie Gerson	14
1	Kevin & Debra Jones	16	19	Dr. Ben & Debra Rubin.	64
1	Dr. Allan & Nancy Reichman	50	21	Andrea & Susan Elyachar	15
2	Jeffrey & Wendy Sitzmann.	34	24	Dr. David & Lynne Bock	40
2	Steven & Beatrice Fine	23	27	Michael & Beth Liss	21
2	Samuel & Deborah Schanker	28	27	Joel & Beverly Levine	48
3	Robert & Lori Kanoff	18	28	Robert & Jean Zeldin	54
3	Daniel & Jeannie Hodes.	18	30	Stephen & Barb Stras	51
3	Peter & Sarah Beren	29	31	Dr. Jonathan & Ellen Chilton	46
3	Ben & Elena Heisler	6			
4	Ariel & Robin Axelrod	17			
4	Matthew & Karen Davis	24			
4	Michael & Megan Kricsfeld	13			
5	Ed & Amy Tranin	36			
6	Ronald & Denise Coppaken	49			
6	Nikolay & Svetlana Danilov	49			
8	Michael & Rebecca Braverman	39			
9	Randal & Meg Adler.	34			
10	Jonathan & Shira Hurst-Sneh	12			
10	Mike & Naomi Silverman	58			
11	Rita Cortés & Mary McLean.	15			
15	Stuart & Sharon Pase	50			
15	Bernard & Barbara Birnbaum	72			



Mazel Tov to Our 2023-2024 Board!

Officers & Chairs



DR. ANN KARTY
President



VICTOR WISHNA
Executive Vice President



JANNA ROSENTHAL
VP Engagement & Programming



ERIC SCHULTZ
VP Ritual



MIKE KOLB
VP Education



ADAM MATSIL
Treasurer



DEBBIE SOSLAND-EDELMAN
Secretary



JASON KRAKOW
Past President



MIKE SILVERMAN
Past President



JILL GOLDSTEIN
Sisterhood President



AMY SCHULTZ
Ritual Co-Chair



MARI ANNE BIRNBAUM
Membership Chair



JEREMY ANTES
Building & Grounds Chair



STACI KAHN
Education Chair



ADAM MILLER
Administrative Chair

Board of Directors



RENANA ABRAMS
Member at Large



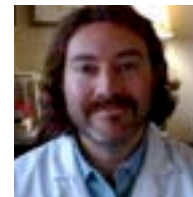
SAM BARRER
Member at Large



AARON BERGER
Member at Large



LOUIS COHN
Member at Large



SAM DEUTCH
Member at Large



HAROLD KASEFF
Member at Large



RANDY KATCHER
Member at Large



NEIL MILLER
Member at Large



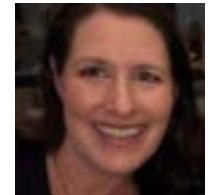
PETER NEWMAN
Member at Large



DAN OSMAN
Member at Large



ERIC POE
Member at Large



JULYE ROSE
Member at Large



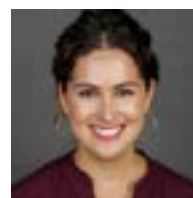
MILES ROSS
Member at Large



HEATHER SCHLOZMAN
Member at Large



LISA SKOLNICK
Member at Large



ILANA CHILTON
New Member



LAUREN AZORSKY LEVY
New Member



BRUCE SILVERMAN
New Member



BARUCH DAYAN HAEMET

PLAQUES HAVE BEEN DEDICATED *In Memory Of...*

YAHRTZEITS Join us for morning or evening minyan to say Kaddish for your loved one. Check our website for service schedule.

ברוך דין האמת

Praised is the True Judge

JUL 1-12 TAMUZ

Harry Blatt
Harry Nathan
Brown
Walter Drew
Della Glass
Sol Kopitnik
Ben Pateck
Tillie Pelofsky
Nehamah Plotsky
Hannah Rock
Jacob Rosenblum
Wilbur Tigerman
Simon Wolfberg

JUL 2-13 TAMUZ

Leonard Bayzman
Bessie Cortez
Alice Friedman
Sam Friedman
Anna Moskovitz
Glaser
Abe Gutovitz
Samuel Kalinsky
Jacob Max Kanter
Nellie Klein
Fannie Krashin
Golda Rosen
Warren Siegel

JUL 3-14 TAMUZ

Nina Lee Apple
Max Bergmann
Rose Bramson
Sarah Dubinsky
Morris Galler
Joseph C. Glaser
Meyer P. Gottlieb
Ruth Hyman
David Jacobson
Abe Katz
Max Kopin
Sol E. Lapin
Theodora Riva
Oshiver
Sadie Remer
Menahem Mendel
Roslawowski
Nettie Stone

JUL 4-15 TAMUZ

Edith Agron
Dora Blackman
Fanni Epstein
Bess Gale
Pearl Herowitz
Stephen Hershman
Meyer Pachter
Fanny Puritz
Libby Rittmaster
Bertha Rogovein
Herman Samuel
Rose
Phillip Rositzky
Irving Rubenstein
Phineas Schwartz
Alter Shankman
Harriet Lee
Sherman
Henrietta Silverforb
Sarah R. Wienstein
Paul (Pete) Winett

JUL 5-16 TAMUZ

Rose Alisky
Joel Blackman

Lena Bloom
Dorothy Copaken
William Freiden
Ray Friedman
Tillie Horwitz
Anna Karol
Gussie Kort
Saul Kumin
Anna Marks
Jacob Pilz
Mary Rosenberg
Naomi Rutlader
Max Spilcaufsky
Rose Zurovsky

JUL 6-17 TAMUZ

Elishu Bayless
Myer Cohen
Ethel Eisen
Herman Greenstein
Carl Hipsh
James Kunellis
Alexander F. Muller
Joanne Pack
Etha Sarah Walsky

JUL 7-18 TAMUZ

Al Abrams
Esther Bernstein
Morris Bodker
Kalman M. Brand
Rae Hadas Broun
Rebecca Rose
Droher
Joseph Feingold
Stanley Goldberg
Rebecca Hershman
Albert Korf
Bernice Peltzman
William Pesman
Simon Rope
Irving Saskin
Ida Schlosberg
David N. Sosland

JUL 8-19 TAMUZ

Marie Bernstein
Esther Blasbalg
Paul "Pete" Cohn
Pauline Cohn
Lillian Hochberg
Sonia Laner
Beatrice B. Mindell
Abraham Prussack
Rosa Sosland
Dora Stern
Samuel David
Westerman
Ruth B. Yukon

JUL 9-20 TAMUZ

Tzeitel Feinberg
Bertha Glatt
Bernard Kantor
Sharlene Kantor
Louis Klein
Michael Harry
Panich
Goldie Rosenthal
Inge Silverman
Herman R. Tonkin
Judith Ann
Weinberg
Henry Stanley
Zwern

JUL 10-21 TAMUZ

Gary S. Bitner
Elsie Boolkin
Herbert Feder
Sadie Gordon
Fannie Greenstein
Toby Herowitz
Marian Shapiro
Abraham Smith
Robert R. Tonkens
Davida
Trochtenberg
Marvin Edward Zeff

JUL 11-22 TAMUZ

Evelyn Bendersky
Herman Berman
Elizabeth Bohm
Samuel Brown
Arnold Coppaken
Nathan Fradin
Harry Gross
Morton Leon Hurst
I. Pete Pesmen
Joseph J. Plotsky

JUL 12-23 TAMUZ

Sidney Bender
Elaine R. Brown
Rosalie Ezralovitz
Elizabeth Ginsberg
Al Jacobs
Frieda Kanter
Louis Katz
Ethel G. Pack
Bernice Peltzman
Sam Schwartz
Heda Segal
Jake Shabason
Phillip Spector
Dorothy R. Stoup
Isadore Stoup
Anna Tempofsky
Abe Trillin

JUL 13-24 TAMUZ

Jennie Cohn
Lewis David
Fingersh
Joseph Kaufman
Fannie Mae
Sosland Marder
Sidney Pakula
Louis J. Pelofsky
Mollie Zeff

JUL 14-25 TAMUZ

Clementine
Blumenthal
Esther Fox
Bushman
Bessie Cheifetz
Fayge Malkeh
Cinnamon
Michael Lynn
Goodman
Sadie Hoffman
Lina Neustein
Jennie Okonowsky
William P. Orlove
Anna Passman

Diana P. Silverman
Samuel Taylor
Adele Walker
Joseph Zwillenberg

JUL 15-26 TAMUZ

Abe Bess
Susan René
Birnbaum
Joe Bormaster
David M. Chambers
Fredie Epstein
Marcia Eveloff
Sanford Goldansky
Morris Kanter
Isadore Morris
Marion Rosen
Aaron Turock
Elias Wolarsky

JUL 16-27 TAMUZ

Rebecca Block
Dobeh Gurfovnick
Mary Cohen Jedel
Samuel N.
Josephson
Milo Minkin
Morris Morgan
David Overbeck
Lena Peltzie Present
Liba Miriam bat
Reb Shmuel ha
Kohen
Leopold Shopmaker
Sarah Wengrover

JUL 17-28 TAMUZ

Fanny Alexander
Lipman Goldman
Molly Goodman
Frank Kaple
Helen Lefkowitz
Mildred Mardiks
Seymour Nathan
Salvay
Elizabeth (Betty)
Waldman
Bennett H. Walzer
Samuel Weinberg

JUL 18-29 TAMUZ

Isidore Bernstein
Samuel Brodtkin
Louis Y. Chernikoff
Morris A. Friedman
Milton M. Gordon
Earl Jacobson
Rebecca Katcher
Pearl Mann
William Marcuwitz
Herman Millman
Bessie Rothberg
Max Rubin
David Smolinsky
Rosa Solomon
Cyrus Spungen
Dr. Herbert J. Winer
Lillian Yeddis
Gerald Yukon

JUL 19-1 AV

Dorothy R. Botwin
Manuel Goodman

Jacob J. Greenstein
Gittel Hadas
Betty Benjamin
Heymann
Birdie Josephson
Retha D. Lisman
Gertrude Pasmanik
Jacob Selichonok
Minnie Werby

JUL 20-2 AV

Morris Boolkin
Simon Choikhit
Helen Cohn
Luba Dean
Leon Gelpman
Dorothy Dunn
Glober
Dora Hellman
Jane Anne Klaiher
Edward C. Lefkovits
Sarah Moskowit
Benjamin Schoen
Harold Waxman

JUL 21-3 AV

Saul Brams
Sammy Devins
Sidney B. Devins
Rebecca Eisen
Isadore H.
Fleschman
Aileen Forman
Minnie L. Garfinkle
Harry Ginsberg
Rose Keen
Isie Krockover
Abraham Rogers
Meyer Rosenberg
Bernard Seiden
Ernest Spector

JUL 22-4 AV

Sadie Bell
Ann Goller Elick
Phillip Feingold
Bernard Greenberg
Fannie Lerner
Ben Mallin
Edith Mendy
Bronia
Roslawowski
Harry Turock

JUL 23-5 AV

Rachel
Bloomgarten
Don Herbert
Finestone
Sadie Gumowitz
Idy (Ida) Mae
Hurwitz
Rachel Turk Hurwitz
David Kanter
Freda Lipsitz
Bertha Mallin
Carl Minkin
Jacob Poizner
Phillip Samuelson
Charles Schoen

JUL 24-6 AV

Bessie Abramson
Morris L. Bigus
Pearl Brown
Anna Cohen
Samuel E. Dunn
Rose Gastman
Samuel A. Katz
Jacob Kopperman
Leo J. Levinson
Bela Lipszyc
Anna Naron
Sam Rosga
Morris Schoen
Alvin Shapiro
Geraldine (Gerry)
Sivers
Abraham Vinick
Sarah R. Weinstein
Sarah Wolfberg

JUL 25-7 AV

Barry L. Aronson
Joseph E.
Chambers
Harvey Cohen
Gussie Kaufman
Samuel Kaufman
Lynn Kisluk
Betty Ann Koralchik
Herman Labowitz
Reltz Lenet
Morris J. Levin
Anna Dora
Peltzman
Haim Yehudah Reb
Shmuel ha Kohen
Sam Samberg
Jacob Siegelbaum
Dora Walker

JUL 26-8 AV

Fannie Eisen
Barney Gershon
Naomi Goldstein
Nathan Keen
Morris Rapschutz
Abraham Robinson
Sarah Rocher
Fannie Shapiro

JUL 27-9 AV

Alvin Arenson
Allan Birman
Betty Birman
Bessie Bordman
Mary Chernikoff
Mordecai Crosner
Rosa Crosner
Barbara Enslein
Israel (Izzy)
Friedman
Rebecca Rachel
Furman
Bessie Goldberg
Jennie Himmel
Anna Hoffman
Henshen Keller
David Leibtag

Emma Loeffler
Siegfried Loeffler
William Peltzman
Mitchel Rose
Anna Tempofsky
Pauline Yaskolka

JUL 28-10 AV

Melvin Ellis Beyer
Sarah Golding
Neil F. Miller
Jennie Millman
Mendel Oshry
Clara Rothblatt
Esther Shapiro

JUL 29-11 AV

Alfred Aron
Morris Balot
Ida Baron
Barney Cinnamon
Abraham Cohen
Sophia Cohn
Rae Dloogoff
Jacob Goldstein
Hilda Handel
Ida Z. Joseph
Richard L.
Josephson
Louis Kiansky
Esther Lesser
Charlotte S.
Margolin
Meyer Peltzman
Sarah Scrinopskie
Ethel Seider
Katie Solsky
Philip Wang

JUL 30-12 AV

Toby Chemel
Ida Frank
Dorothy Glass
Dora Gold
Nathan S. Goldberg
Serena Hammer
Anna Horowitz
Samuel Isaak
Phillip Katz
Hyman J. Levi
Hyman Rosen
Ben Solomon

JUL 31-13 AV

Rebecca Barash
Bessie Brenner
Samuel J. Brown
Sigmund Dollman
Pearl Gorelick
Rose Gould
Jack Kahn
Harry Levy
Jennie Marks
Isaac Sackin
Harris Segelbohm
Samuel Spector
Ruth Unger
Evelyn Yodler

Unveiling Announcement: Dorothy Katcher
Sunday, August 6 at 10:30 am
at Sheffield Cemetery

David M. Glickman

Senior Rabbi

Beryl Padorr

Associate Rabbi

Tahl Ben-Yehuda

Hazzan

Stefanie Misler Williams

Executive Director

Judy Jacks Berman

Director, RFECEC

Civia White

Director, PRS

Ben Novorr

Director, Youth & Family
Programming

Dr. Ann Karty

President

Alan L. Cohen

Rabbi Emeritus

The Congregation Beth Shalom Scroll

(USPS531-420) is published monthly

by Congregation Beth Shalom,

14200 Lamar Avenue,

Overland Park, KS 66223.

Annual Subscription \$24.00. Periodical

Postage Paid in Kansas City, MO.

DATED MATERIAL

POSTMASTER: Send address changes to

CONGREGATION BETH SHALOM SCROLL,

14200 Lamar Avenue,

Overland Park, KS 66223.

Congregation Beth Shalom, an egalitarian Conservative synagogue, is a welcoming community of individuals from diverse backgrounds, strengthening connections with God, Torah and the Jewish people through communal commitment to prayer, study and acts of loving kindness. Jewish Living Experiences from the new, blended community of Beth Shalom and the former Ohev Sholom.



Introducing
PRS Pre-K

Sundays at Congregation Beth Shalom
Sundays Once A Month from 9:30 am to Noon

PROGRAM FEATURES :

- ✓ Jewish Holidays
- ✓ Jewish Values
- ✓ Spoken Hebrew
- ✓ Music
- ✓ Art
- ✓ Fun with Friends

Just \$180 for the full year

Register Now!
<https://bit.ly/prs2324>

For More Information,
Email Civia White
cwhite@bethshalomkc.org

Office Hours

913-647-7279

MONDAY-THURSDAY 8:30 AM - 5 PM

FRIDAY 8:30 AM - 3 PM

Closed on Federal Holidays

Mt. Carmel Cemetery Hours 913-647-7279

MONDAY & WEDNESDAY 8:00 AM - 4:30 PM

TUESDAY & THURSDAY CLOSED

FRIDAY & SUNDAY 8:00 AM - 4:00 PM

SATURDAY CLOSED

NATIONAL HOLIDAYS 9:00 AM - 4:00 PM

JEWISH HOLIDAYS CLOSED

Exceptions: Thanksgiving, Christmas Day, New Year's Day & Easter

Sisterhood Gift Shop Hours

Gift Shop Schedule

913-647-7298

SUMMER HOURS:

By Appointment Only

EMAIL CONNIE SIMON AT STLTKC@GMAIL.COM TO
SET UP AN APPOINTMENT

Daily Minyan

MONDAY-THURSDAY 7 AM AND 6 PM

FRIDAY 7 AM

SUNDAY 8 AM AND 6 PM

(Morning Minyan is in Goldsmith Hall and on Zoom.
Evening Minyan is on Zoom exclusively.)

Please note, Morning Minyan on Tuesday, July 4 will be
at 8 am due to Independence Day.