



The Scroll

HIGH HOLIDAY SCHEDULE 2023 | 5784

Selichot

SAT, SEPTEMBER 9

SERVICE

9:30 AM Shabbat Service GH
 Guest speaker Rabbi Josh Feigelson
 8:00 PM Community Selichot Program B'nai Jehudah
 11:45 PM - 12:45 AM Traditional Midnight Selichot Service . RM 108

Memorial Service

SUN, SEPTEMBER 10

SERVICE

1:00 PM Memorial ServiceMt. Carmel Cemetery
 Rabbi David Glickman & Hazzan Tahl Ben-Yehuda

Erev Rosh HaShanah

FRI, SEPTEMBER 15

SERVICE

6:00 - 7:00 PM Traditional Service. GH
 Rabbi David Glickman, Rabbi Talia Kaplan & Hazzan Tahl Ben-Yehuda

Rosh HaShanah Day 1

SAT, SEPTEMBER 16

SERVICES

8:30-1:00 PM Traditional Service. GH
 Rabbi Scott White, Rabbi David Glickman & Hazzan Tahl Ben-Yehuda
 Rabbi Glickman's sermon approximately 11:00 AM
 9:00- 9:45 AM Preschool Family Service LLPS & Playground
 Emma Jacobson
 9:45-10:30 AM Youth Activity Lower Level
 Civia White, Jamie Katz & Shira Zigler
 10:00-12:30 PM Instrumental Music Service. LLPS
 Rabbi Talia Kaplan & Victor Wishna
 Rabbi Kaplan's sermon approximately 11:00 AM
 10:30-11:15 AM Youth Service Lower Level
 11:15-12:00 PM Youth Activity. Lower Level
 11:00-12:30 PM Pavilion Musaf Service. Indian Creek
 10308 Marty St, Overland Park, KS 66212
 103rd Street is closed west of Metcalf - need to come from Antioch
 Norm Kahn & Rita Cortés

Rosh HaShanah Day 2

SUN, SEPTEMBER 17

SERVICES

8:30-12:30 PM Traditional Service. GH
 Rabbi Scott White, Rabbi Talia Kaplan & Rita Cortés
 Rabbi Kaplan's sermon approximately 11:00 AM
 9:00-9:45 AM Preschool Family Service LLPS & Playground
 Emma Jacobson

9:45-10:30 AM Youth Activity Lower Level
 Civia White, Jamie Katz & Shira Zigler
 10:00-12:30 PM Rimon Service LLPS
 Rabbi David Glickman & Hazzan Tahl Ben-Yehuda
 10:30-11:15 AM Youth Service. Lower Level
 11:15-12:00 PM Youth Activity. Lower Level
 4:00-5:00 PM Community Tashlikh/Minchah . . . Regency by the Lake
 14800 Lamar Ave, Overland Park, KS 66223
 Rabbi David Glickman, Rabbi Talia Kaplan & Hazzan Tahl Ben-Yehuda

Kol Nidrei

SUN, SEPTEMBER 24

SERVICE

6:30-7:45 PM Pavilion Service.Indian Creek
 Relaxed atmosphere, slightly abridged, traditional service.
 All ages are welcome!
 10308 Marty St, Overland Park, KS 66212
 103rd Street is closed west of Metcalf - need to come from Antioch
 Rita Cortés & Civia White
 7:00-9:00 PM Traditional Service GH
 Rabbi David Glickman, Rabbi Talia Kaplan & Hazzan Tahl Ben-Yehuda

Yom Kippur

MON, SEPTEMBER 25

SERVICES

8:30-1:30 PM Traditional Service. GH
 Alan Edelman, Rabbi David Glickman & Hazzan Tahl Ben-Yehuda
 Rabbi Glickman's sermon/Yizkor approximately 10:30 AM
 9:00- 9:45 AM Preschool Family ServiceLLPS & Playground
 9:45-10:30 AM Youth Activity Lower Level
 Civia White, Jamie Katz & Shira Zigler
 10:00-12:30 PM Instrumental Music Service. LLPS
 Rabbi Talia Kaplan & Victor Wishna
 Rabbi Glickman's sermon/Yizkor approximately 11:00 AM
 10:30-11:15 AM Youth Service Lower Level
 11:15-12:00 PM Youth Activity Lower Level
 11:00-12:30 PM Pavilion Musaf Service Indian Creek
 10308 Marty St, Overland Park, KS 66212
 103rd Street is closed west of Metcalf - need to come from Antioch
 Norm Kahn & Rita Cortés
 4:15 PM Pre-Minchah Study Session GH
 Rabbi Talia Kaplan
 5:15 PM Minchah/Neilah/Ma'ariv GH
 Rabbi David Glickman, Rabbi Talia Kaplan & Hazzan Tahl Ben-Yehuda
 7:43 PM Shofar Blast GH

Key: GH = Goldsmith Hall LLPS = Lower Level Prayer Space



Teshuvah is About Change, Continuity and Continuous Change

Many years ago, I described the process of Teshuvah as “Returning to a Place You’ve Never Been.”

The Hebrew word, teshuvah, is often defined as “repentance,” but a literal definition is returning. Practically, though, we are not actually “returning.” Teshuvah is about the process of self-repair. It is also about spiritual growth. The “Ba’al/ at Teshuva” often describes someone who becomes ritually observant later in life. Though the direct translation means the “repentant,” this assumes that someone who has taken on new aspects of Jewish spiritual expression were “sinning” before.

Speaking as someone who has experimented various mitzvot in different forms from adolescent until the present day – I think that this “sinner vs. repentant” paradigm an unhealthy way. Personally, I would love to find a way to encourage play, experimentation, improvisation and fluidity in forms of religious expression.

When someone is in a relationship with another – be it familial, platonic or romantic – that relationship is constantly in flux. There are waves of closeness and distance. There are passages of time with more communication and less. Also, couples and groups “play” together. Sometimes literally – creating a bridge game, a pickleball posse, or a book club. Other times, that play is simply an experiment – trying on travel together, testing out a different restaurant or coffee shop together, or pushing one another to volunteer together for a cause.

A spiritual life is also about relationship; and it is a relationship that is also constantly in flux. In order to keep the spiritual relationship fresh – whether that is a relationship with our Creator, or a relationship with our own creative Divine spark – play and experimentation can help.

As we approach the time of Rosh HaShanah and Yom Kippur, it is natural to think about Teshuvah. Teshuvah permeates the entire months of Elul and Tishrei in both our prayers and our deeds. This year, I would encourage you to think about Teshuvah as growth rather than only repair and repentance.

Yes, part of growth is repairing the brokenness we might have caused this past year. There is another part of growth – building oneself through experimentation and play. This Rosh HaShanah, I encourage finding a way to play with your Jewish living. Try something on. See how it looks on you! Play with prayer, with loving kindness, with giving, with practice, with learning. This year, let’s approach our Jewish living with a light touch, with a sense of joy, with experimentation, and above all growth. Let us find ways to change ourselves for the better that is simultaneously a continuation of our old selves and an introduction of our new selves.

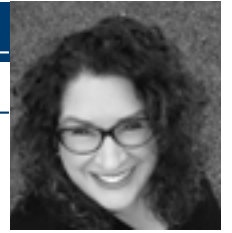
My wife, Annie, and our children Gavi, Ellie and Dani join me in wishing from our family to yours, a year of good health, a year of peace, and a year of personal growth and renewal.

Shanah Tovah U’Metukah -- Best Wishes for a Sweet Renewed Year,

RABBI DAVID M. GLICKMAN

dglickman@bethshalomkc.org





Our Next Chapter

Everyday, I pull up to the building and sit in the parking lot in awe. I watch as we see our Sacred Space rise from the field that I sat in many times before. Where the end of year preschool picnics were held. Where bounce houses were staked into the ground and blankets were filled with families, shoes, laughter and hot dogs. Where the Sukkot kite races succeeded because of the amazing amount of wind we have on our hill. Where we all stood, gold shovels in hand, and broke ground together.

It has been amazing to follow the progress. First, we watched them move a ton (several actually!) of dirt and rocks. I never knew how exciting it would be to watch the concrete being poured and watch how they meticulously smooth it out. Seeing the curbs take shape, and visualizing where the entrance will be. Seeing the steel being brought in and begin to show the outline of our building has brought excitement to all!

As I meet with our contractors and architects, we discuss the tiniest of details. The attention to every single one is incredible. We will soon be traveling to New Holland, Pennsylvania to look at mockups of the Aron Kodesh! They even had me take an average weight of our Torah scrolls so they could create a replica of a Torah so we can make sure the height of the custom built holders is correct, and people will be able to move the scrolls in and out of the Ark with ease.

Meetings in Rabbi Glickman's office have gotten even more inspiring as we see the potential of our future. His office window provides the perfect backdrop as the new year approaches, and our new building becomes a reality, we can envision our new chapter.

We see our youth at their b'nei mitzvah, our traditional weekly services with people picking their new, unofficially assigned seats, we see the balcony filling as more people come to hear a concert, and we even see our congregants having a beautiful space to come together under the chuppah as we already have a wedding on the books!

As we stated when we began our Sacred Space Campaign, we are building for tomorrow, today. Please join us to celebrate this momentous time in our history. We will keep sharing pictures and updates, but I invite you to come peek. It is a wonderful sight to see. Come be a part of our next chapter.

Wishing everyone a healthy, happy New Year, and we look forward to seeing you soon.

STEFANIE MISLER WILIAMS
EXECUTIVE DIRECTOR
swilliams@bethshalomkc.org

Lulav & Etrog Orders



Please visit <https://bit.ly/44iG3c0> to order your Sukkot needs (Lulav, Etrog & Hoshanoth).

Pick-up will take place at Congregation Beth Shalom.
Orders are due by Monday, September 5th, 2023
in order to arrive in time for Sukkot.



by **RABBI TALIA KAPLAN**
tkaplan@bethshalomkc.org

As we head towards Rosh HaShanah, Yom Kippur, and Sukkot, the “reason for the season” is teshuvah. “Teshuvah” is often translated as “repentance,” but I prefer to translate it more precisely as “return.” At this time of year, we do the necessary spiritual and interpersonal work to try to return to the most essential, authentic versions of ourselves.

In a Hasidic story, the great Reb Zusha tells his students that when he encounters God after he dies, God will not ask him, “Why were you not more like Moses,” but rather, “Why were you not more like Zusha?” It is easy at this time of year, and always, to hold ourselves to external standards, or to look over our shoulder and see what the person next to us is doing. Instead, what if we each had our own “Zusha” moment? How can we be more like our true selves? If we don’t know yet who or what that is, how might we discern it? It might take some soul searching to figure out what that is, but it is a deeply Jewish and deeply important process for each of us to undergo.

As I get to know the Beth Shalom community, I am excited to share parts of myself and get to know who each of you truly are. I also hope to become a part of the ongoing process of deciding who we want to be as a community, one that is made up of longtime, multigenerational member households and new members; individuals and families; Ohev Shalom veterans and Beth Shalom veterans; interfaith couples and couples raised in the same faith tradition; familiar clergy and new clergy. Who can we be when we bring these and the many other parts of our identities and come together in service of something larger?

Embarking on this process of teshuvah, I invite us to bear in mind not only the ways we aspire to grow personally, but also how we hope to engage in community. It is truly a pleasure to have been welcomed into this process with you. May it be a sweet new year for you, your loved ones, and our world.

FROM THE **Director of Youth & Family Education**



Spoiler Alert! What is new at PRS?

by **CIVIA WHITE**
cwhite@bethshalomkc.org

Middle School:

PRS is offering a new program called "Ulpan" for kids in middle school. The 7th and 8th-grade students will meet with Israeli teachers to develop Hebrew speaking skills in fun and entertaining ways. The kids will perform skits, sing modern Hebrew songs, and prepare practical dialogs which they can use for getting around when they visit Israel.

Elementary:

PreK at PRS is filling up quickly! This preschool Sunday school initiative is made possible by generous donations from the Goldstein Family Foundation and the Joshua & Abigail Millan Family. The children will meet one Sunday each month for a morning of music, stories, prayers, art, and playtime with Jewish friends. Their teacher, Nira Solomon who teaches K at HBHA, will chat with them in Hebrew and get these little ones ready for Kindergarten at PRS! Wednesday sessions for students in grade 3-7 will start with an optional early drop-off time of 3:15pm. Kids will have time to work on school homework, play board games, and visit with friends in Goldsmith Hall until 4:15pm when services with Hazzan Ben-Yehuda begin. The PRS

students are so fortunate to have Stella Shapiro (who grew up at Beth Shalom) as our new art teacher! She is amazing at integrating Jewish concepts into art projects. She will also be introducing art history and art appreciation to the curriculum and kids. These special friendships begin at creative school programming and last into the future.

The entire congregation benefits from supporting the Jewish Education of our youth. You are always welcome to plan a visit to the school; it would be wonderful to have you share your ideas with the faculty and your talents with the students.

I look forward to seeing you during the High Holiday season this year and for years to come.

From my family (Rabbi Scott, Jacob, and Benjamin), to yours, have a Healthy and Happy new year and much success in the years ahead.

Blessings,

Civia White





Sunset, Sunrise

by DR. ANN KARTY | PRESIDENT

“But, where are the cicadas?”

All summer long this year, I kept wondering why it seemed so quiet. Yes, we had our typical Kansas thunderstorms with wind, hail, and rain shafts that doused everything in its path depending which side of the street you were standing. Branches fell and trees were uprooted. For many, even electricity disappeared for a few days. Afterwards, the lawns flourished, the humidity rose, and the sky cleared. Aside from street sounds, passing trucks, dogs barking, and some cardinals living in my backyard, it was almost silent.

I was missing the beautiful sounds of the cicadas. I remember sitting outside with my grandmother listening to cicadas. The crescendo-decrescendo sing-song they made was welcoming and reassuring. When I hear them, I think of her.

Recounting and retelling family history, much like stories in the Torah, help us understand where we have been so we can better direct why, and where, we are going.

With the gentle wind blowing, bellowing branches of the nearby willow tree used to stroke my arm and “nice me” (as

my grandma would call it). The stories she would tell me those evenings were passed down from her parents. I learned how her father arrived in the United States at 17, by himself, and was a shoe cobbler. Her mother and sisters all had to hide behind a chimney when the Bolsheviks came and, once sponsored, they were allowed to come to the United States.

What stories do you share?

Even though it seems the cicadas came later this year, I finally was able to hear them. The rubbing of the wings (in large numbers) causes a choir of chirping, clicking, and pulsatile buzzing. Folklore suggests cicadas start singing six weeks prior to the first frost, so we will see.

Remembering the past helps center myself to focus on the future. As I think about the upcoming chaggim and what the new year can bring, the rhythmic, cyclical sounds of the cicadas are calming. I hope they are for you, too.

I wish you all a Happy, Healthy New Year. Shana Tova.

SOCIAL JUSTICE

Social Justice Committee Hands over Keys to First Shalom Homes Homeowner



On Sunday, August 13, members of the Beth Shalom Social Justice Committee welcomed first-time homeowners Javier Chamela and Katia Pabiola Mendez and their three children to their new home. The single-family home was made possible by many generous donors through a partnership between Shalom Homes and Tikkun KC. The Beth Shalom Social Justice Committee created Shalom Homes in response to the lack of affordable homes and the racial injustice related to home ownership. Members of the Social Justice committee actively participated in the process of building the house by raising much needed funds and doing some interior painting.

by JILL GOLDSTEIN | PRESIDENT

jgoldstein0127@gmail.com | 913-636-9725

Chazak v’Ematz. Where have you seen this term before?

This was the national theme for this past year’s Sisterhood Torah Fund Drive.

Being a teacher for more than 50 years, of course my initial reaction to this phrase was to see how many of us know what it means and then to ask, how many of us can relate it to our Jewish Heritage and are now using those traits in our daily lives?

The words, of course, translate from Hebrew into English as Strong and Courageous. What does that mean? According to the dictionary, these words mean:

- mentally powerful or vigorous
- especially able, competent, or powerful
- of great moral power, firmness, or courage

In Deuteronomy, (the final Book we begin before the High Holidays) Moses imbues his successor Joshua with courage to lead the Jewish people into the promised land without him by charging him: chazak ve’ematz, “be strong and courageous.” Each of us receives a similar charge at the start of every new Jewish year when we recite Psalm 27 around the High Holidays. It ends with these words of exhortation: chazak

veya’amez libecha, “be strong, and strengthen your heart.” This verse encourages every one of us to cultivate the inner strength we need to meet whatever challenges emerge in the future.

We are not Moshe or Joshua, and we are not facing the possibility of annihilation by crossing into a new land. However, we are facing a new year, and like the Jewish people crossing over from desert into the Land of Milk and Honey, we will face new challenges each and every day, whether they be socioeconomic, political, medical, etc. So, let us all remember as we go forward, chazak v’amez. Be confident in our decisions, vigorous in carrying them out, face new challenges with courage, and then, remember, we at Beth Shalom are a community—a family here to support you.

I look forward to working with all of my CBS “Sisters” and the CBS mishpacha.

Chazak vey’a’amez libecha,

JILL GOLDSTEIN
SISTERHOOD PRESIDENT

Beth Shalom Sisterhood presents
Braid, Twist and Take home your round
holiday challah
Thursday, September 7
7:00 to 9:00 p.m. Goldsmith Hall
\$18 for members \$20 for non-members
Cash check or venmo @Danielleantes
For further information contact Danielle
@ 913-484-5040





FROM THE Director of Youth & Family Programming



Thinking (and Overthinking) My Way Through the Holidays

by BEN NOVORR

youthdirector@bethshalomkc.org

Those who know me well know I can be a bit of an over-thinker, and there is no time of year where I overthink more than around the High Holidays.

I ask myself a myriad of questions, from deep ones like “how can I really take advantage of the new start that a new year provides?” or “how can I truly atone in the most genuine way?”, to seemingly inconsequential ones such as “are the apples I bought to dip in honey too tart?”

I’ve been working at Beth Shalom for over a year, and in that time, there was one thing that drove me crazy: the storage closet in the youth lounge. On my first day, I found a closet that held much of the history of youth programming at Beth Shalom. There were old KCUSY photos and t-shirts, Purim carnival games, old toys, games, and art supplies. It was so full I couldn’t even walk through it.

Despite the disorganization driving me crazy, for the first 11 months I was here, it sat nearly untouched... as a messy memorial of the past.

So why did I wait so long to clean it?

Truthfully it seemed like a task with no ending... something both incredibly urgent and not urgent at all. That being said,

this summer, I cleaned the closet, neatly labeled boxes, and made it a usable space to be proud of. What seemed like an endless task was suddenly at its end.

So why still doesn’t it feel complete?

Well... that’s where these big questions surrounding Rosh HaShanah come in. I shared earlier that one of the big questions I ask myself is “how can I really take advantage of the new start that a new year provides?” Having this newly clean closet feels like a fresh slate for the upcoming year. A vast sea of possibilities of what Beth Shalom youth programming can look like. So the question remains—“how will we take advantage of and seize this amazing opportunity that this clean programming closet represents?”

Going into the new year, I am reminded of the opportunity to start fresh and create something worth working hard and conquering challenges for for the teens and families of our congregation. This is something that I look forward to doing with all of you.

If I ever seem lost and can’t seem to figure out how to take advantage of all the possibilities that 5784 has to offer... you can probably find me thinking (or overthinking) about it in the storage closet.



by **Judy Jacks Berman** | DIRECTOR

jjb@bethshalomkc.org | 913-647-7287

Children at Rose Family ECEC learned about bees from beekeeper Sheryl Kaplan last year. We welcome Sheryl again this year to teach us more about bees as we prepare again for Rosh HaShanah! Hands on, concrete learning is the best way for young children to learn!!

This year we are looking so forward to a year filled with fun, exciting experiences!!



FROM THE POLSKY RELIGIOUS SCHOOL



Margot Ross is ready for pre-K at PRS. This brand new initiative is sponsored by the Goldstein Family Foundation and Josh and Abigail Millan.



PRS faculty members (Nina McNay, Dawn Gale, Leah Haller, Laura Galler, Ben Novorr, and Lauren Levy) attended a special learning session for religious school educators during the annual Day of Discovery. They are all so excited to bring what they learned to their classrooms at PRS this year!



Yabrtzeits Join us for morning or evening minyan to say Kaddish for your loved one.

SEPT 1-15 ELUL

Abe Bergman
Olga Bruller
Selma S. Feld
Suzanne Jo Geller
Bessie Ginsberg
Rose Markowitz
Linda Tulchinsky
Siegel
Sanders Sosland
Sender Szajnfeld

SEPT 2-16 ELUL

Lucy Greenberg
Dorothy Harding
Samuel Kaplan
Sarah Plattner
Melvin Rolsky
Jerome Howard
Schrader
Benne Yukon

SEPT 3-17 ELUL

Sam Bobrov
Rose Bordman
Katie Brown
Aaron Cohen
Minnie Cohen
Mary Ann Cohn
Robert Ginsberg
Marvin Korn
David Krasner
Samuel H. Levin
Sam Rosenberg
Lena Topf
David Wishnow

SEPT 4-18 ELUL

Sophie Sonya
Agron
Leo Feingold
Louis Goldstein
J. Harry Kulakofsky
Rose H. Overbeck
David Partnoy
Sarah Viner
Peltzman
Sol Posner
Edith Goller
Rosenberg
Seymour Alex "Cy"
Rudnick
Oscar Untrif

SEPT 5-19 ELUL

Fannie Brams
Elo Friszman
Bessie Gottlieb
Claire Gutovitz
Morris Jacobs
Miriam Krantz
Anne Bondell
Pollock
Freda Rosenbaum
Naomi Shabason
Sherman Irvin
Weintraub
Anna Yukon

SEPT 6-20 ELUL

Sol Botwin
Abe Brodsky
Lottie Feinberg
Fred S. Goldsmith
Minnie L. Hauser

Selma Joseph
Sol Kaplan
Morris Mallin
Abraham Benjamin
Passman
Bertha Rosenberg
David Schuster
Evelyn
Wasserstrom
Flora Rosenblum
Widlansky

SEPT 7-21 ELUL

Benjamin B. Aaron
Dora Baraban
Alex Berger
Joseph Bronstein
Meyer Cohen
Reuben Finkelstein
Milton Forman
Evelyn Greenberg
Louis Hammer
Violet D. Hoffman
Lieb Lieberman
Robert Shapiro
Joseph H. Siegel
Fannie Silver
Norman Weinstein
Edward Wolberg

SEPT 8-22 ELUL

Albert Bell
Morris Copaken
Allen Drew
Hanan Eisen
Gertrude Gandal
Joseph David
Greenbaum
Harold Lee Joseph
Tamma Perlmutter
Annie Picker
Louis Portman
Beryl Rubenstein
Rachel Schwartz
Samuel L. Siegel
Margaret
Weinstock
Alvin Zeff

SEPT 9-23 ELUL

Rose Barabechik
Florence Byer
David Cohen
Daniel L. Feingold
Leah Gandal
Yudas Graves
Zelda Lerer
Rose Levine
Ben Penner
Fannie Rich
David Sanell
Sol Schorr
Ida Rosenbloom
Steinberg
Mildred Supofsky

SEPT 10-24 ELUL

Eva Copeland
Abraham Frost
Ben Gordon
Lillian Kanter
Gus Minkin
Norman Polsky
Sherwin Nathan
Salasche

Katianne Bordy
Tannenwald
Isaac Vogel

SEPT 11-25 ELUL

Ida Berman
Sidney Brown
Esther Cohen
Albert A. Diamond
Jacob Harris
Gilgus
Marlie Greenberg
Blanche Lerner
Sanford Molos
Samuel E.
Segelbohm
Celia Sher
Sylvan Siegler

SEPT 12-26 ELUL

Saul Bifner
Frank Drew
Lena Glazer
Max Hoffman
Millie Kemp Levy
Louis S. Sachs
Leo Schleifstein
Coralee Snyder
Baily Taxman
Daniel Tucker

SEPT 13-27 ELUL

Emil Barsky
Mayme E. Becker
Edwin Chambers
Arthur Frank
Rose Lieber
Rebecca Louis
Rose Milens
Frank Soltz
William Stein
Ida Swerdloff
Dolores Wedlan

SEPT 14-28 ELUL

Jenny Blum
Morris Cohen
Karl Copelman
Myron Diamond
Joe M. Dunn
Michael Fingersh
Melissa
Goldenberg
Maurice Horowitz
Harry Kisluk
Blanche Marks
David Parelman
Arnold Parnes
Harry Stevens
Sarah Summers
Alvin R. Tiber
Bernard Carl Unger
Esther Weiner

SEPT 15-29 ELUL

Avraham Elia ben
Reb Yakov Zev
David (Tim) Blond
Allene Carroll
Sol E. Dennis
Sidney Erdman
Paul Gilgus
Leon C. Grossman
Rose Kosovitz
Harry J. Oshiver
Samuel I. Oshiver

Ralph Rosenberg
Irving Schoen
Robert Seiffer
Rae Silberman
Mezeh Machleh
Viner

SEPT 16-1 TISHREI

Bessie Berman
Samuel M. Bigus
Annie Bortnick
Daniel Brenner
Berl Chaba
Fayge Chaba
Paul Cohen
Arthur Epstein
Dora Finkelstein
Frances
Clemensberg
Fogel

Akiba Garowitz
Eli Gershon
Harry Gilbert
Arlene Grossman
Pearl Peltzman
Hoffman
Leah Hurwich
Lipman Kopinsky
Moses Kopinsky
Sascha Kopinsky
Toibe Kopinsky
Zelig Kopinsky
Mamie Kraft
David Levin
Jeanette K. Levine
J. David Pittell
Hannah Present
Ruben Seigel
Fannie Shapiro
Dora Stanborn
Morton Swartz

SEPT 17-2 TISHREI

Sonia Cotton
Tammie Fingersh
Morris Hans
Paul Jaben
Marjorie R. Kantor
Marlene Krakow
Zelda Kross
Ella Lustig
Milton Malamud
Irving Millstein
Joseph Oshiver
Jerry S. Penzner
Thelma Rosenberg
Frank Schlozman
Louis Silberg
Lena Sorkin

SEPT 18-3 TISHREI

Sarah Behrman
Dora Schmuai
Dekro
Joseph Dekro
Miriam Kopperman
Dickstein
Isaac Ducov
Jennie Gorman
Morris Kort
Samuel Kort
Morris Litvian
Max Navran
Gitla Posmantier
Anna Rubin

Sandhaus
Juliette Seiden
Lazarus Smith
Joe Wolberg

SEPT 19-4 TISHREI

Anne Baum
Max Berman
Ida Devins
Liba Falus
Sol Ginsberg
Morris Goldstein
Cecil Kaminsky
Harry Kaplan
Melvin L. Krashin
George M. Levich
Esther Levine
Myer Lieberman
Etta Magazine
Sidney Magazine
Jean Shear Robin
Khaya Schuster
Harvey Sporn
Sylvia Lee Traxler

SEPT 20-5 TISHREI

Rifa Bayless
Jack Bohm
Philip Herowitz
Jacob Hyman
Herman Koch
Rose Rapaport
Ben Rosenberg
Joseph Jacob
Singmon
Anna Leah Stolov
Morris Traxler

SEPT 21-6 TISHREI

Esther Becker
Evelyn Strauss
Brown
Sara Davidow
Rose Reva
Goldberg
Minnie Gordon
Marian Hermanson
Samuel Katcher
Samuel Katcher
Sarah Brownie
Myron
George C. Newberg
Dorothy A. Novorr
Morris Rogoff
Sadye Rubinfire
Albert Saver
Abraham Steinzeig
Herman Tweed
Isaac Samuels
Viner

SEPT 22-7 TISHREI

Lisa Gayle Barash
Nellie Florence
Coleman
Aida Gilgore
Fannie Karosen
Anna Rachel
Koppel
Sherburne Krieger
William Jack
Newton
Frieda Schlein
Jack Isaac Shear
Anna Sherr-

Anisman
Gertrude Weneck

SEPT 23-8 TISHREI

William B.
Berkowitz
Benjamin Brand
Minnie Frischer
Golda House
Flora Pelofsky
Joe Penner
Joe Rubin
Joann Studna

SEPT 24-9 TISHREI

Milton Adler
Arnold Birnbaum
Grace Rein Cohen
Esther Gibian
Rebecca Lillian
Grossman
Baruch Joel
Harding
Miriam Gittel
Harding
Ida Rae Katzman
Samuel Kopel
Melba Levine
Sol Lipsey
Sam Marcus
Ethel Markowitz
Jacob Risburd
Louis Rosenberg

SEPT 25-10 TISHREI

Samuel Brockman
Akiba Byers
Vellie Dubinsky
Nettie Feinberg
Avrohom Felman
Raizel Felman
Meyer Finkelstein
Sarah Gardesky
Eli Grossman
Elsa Gundelfinger
Tiberius Klausner
Isaak Levine
Harold L. Marks
Joseph Moskowitz
Edith Pinsky
Harry Rubenstein
Prywa Salzenstein
Freidel Schwartz
Jacob Schwartz
Nathan Schwartz
Sashe Schwartz
Israel Weinstein
Nessy Louise
Weinstein

SEPT 26-11 TISHREI

Louis Cumonow
Edith Duni
Edna Ginsberg
Joseph Greenberg
Morris Isenberg
Bernard Kessler
Boris David
Kleiman
Sandra Sosland
Marder
Theresa Meyer
Robert M. Rapaport

Sarah Salkind
Fred Schechter
Morris Shaffer
Abraham B. Starr
Harriette Tivin

SEPT 27-12 TISHREI

Harry Abend
Benjamin Apple
Harry Aven
Wolf Binkowitz
Pesha Hoffman
Leah Mack
Jean Price
Alfred Rafsky
Joe Rose
Rebecca Wexler
Jacob Witschner
Mollye Zinn

SEPT 28-13 TISHREI

Peter Bayzman
Philip Byer
Dora Edith Galitzky
Charlotte Gilbert
Samuel Liebershon
Daniel Saul
Lumian
Sam Nagel
Harry Pack
Dora Kaplan
Pakula
Meyer Pilz
Chaim David
Posmantier
Rebecca Rubin
Fannie Levy
Spellman

SEPT 29-14 TISHREI

Samuel Bordy
Louis Goodman
David M. Katz
Beatrice P. Katz
Mark M. Marks
Harris Naster
Dorothy Orren
Ethel Rogers
Dorothy Spivak
Ross
Samuel Tempofsky
Sam Yagan

SEPT 30-15 TISHREI

Bennie Balfer
Bessie Becker
Blanche Bernbaum
Sarah Bisman
Anna Ducov
Blanche Sosland
Lipari
Barnard Marks
Rose Rositsky
Essie Shaw
Samuel Stein
Jennie Steinberg
Yente Weiner
Hyman Zeldin



September Anniversaries

If you want to make a donation, in honor of your anniversary, contact Melisa, 913-647-7281.

DAY	YEARS	DAY	YEARS
1	Steven & Stacy Brown	21	6 Scott & Debra Davis
1	Jeffrey & Linda Sander	38	6 Abraham & Marlene Kopec
1	Richard & Connie Simon	32	6 Shelly & Alex Malyarov
1	Gabriel & Mullokandova Mullokandov	1	6 Jay & Erica Reich
2	Michael & Renana Abrams	33	7 Daniel & Janna Rosenthal
2	Neil & Alexis Miller	11	10 Aaron & Jennifer Spiegel
2	Eran & Yael Re'em	24	11 Elliott & Katharine Hollub
3	Seth & Robyn Freiden	17	12 Scott & Debra Goldstein
3	Phillip & Barbara Hodes	56	16 Tony & Kelly Shapiro
3	Kurt & Stephanie Kavanaugh	34	17 David Gale & Gina Kaiser
3	Larry & Linda Lessner	45	17 Isaac & Alexis Stone
4	Roberta & Sam Goller	12	19 Steven & Joan Israelite
4	Joshua & Leah Langert	12	19 Stan & Mary Weiner
4	Steven & Judith Sherry	63	20 Richard & Lisa Hurst
4	Sarah & Daniel Stras	7	21 Jeffrey & Valerie Gasser
4	Jonathan Gavra & Jennifer Davis	7	26 Phyllis & Tonis Barkley
5	Michael & Francine Farkas	41	27 Leonard & Elizabeth Hershman
5	Allen & Gail Gutovitz	52	27 Max & Julie Soloman
6	Gregory & Susan Azorsky	36	
6	Lewis & Carol Berey	58	

MINYANAIRE OF THE MONTH: AUDREY ASHER

"I attend minyan on Fridays once a month and more often when can. What draws me is this: saying Kaddish. Though I can say Kaddish for my parents whenever Yizkor services occur throughout the year and on the Shabbat before the yahrzeit date, saying Kaddish in a minyan on the Yahrzeit date is a completely different experience.

First, I am called to the bimah, the ark is opened, my mother's or father's name is said aloud, and then the Hazzan chants the El Moli Rachamim. At the end of the service, am invited to say a few words about my mother or father.

Each year I try to remember something different, so I reflect on that a few days beforehand. Because this is meaningful to me, I go to minyan to support others who have a yahrzeit or are in their period of mourning. Lastly, I go to minyan to see my buddies who also go to minyan!"



Bat Mitzvah

Sara Garry

September 2 / 16 Elul

Sara Garry is the daughter of Michael Garry & Rebecca Green-Garry and sister of Shoshanna and Meyer Garry. Sara is the granddaughter of Josh and Ronna Garry of Leawood, Kansas and Jeff and Caryn Green of Glenview, Illinois. She attends The Barstow School. Sara is found on the volleyball courts, babysitting, reading a book or hanging by a body of water. For her bat mitzvah project she volunteered on Tuesday nights at the Ronald McDonald House of KC.



Contributions through August 14 are listed below. Thank you for thinking of us.

**BETH SHALOM
CHESED FUND**

In Memory of
Fred S. Berman
Steven Berman &
Judy Jacks Berman
In Memory of
Bessie & Joe Brenner
Dolores Sosnow

**BETH SHALOM
GENERAL FUND**

In Honor of
Rabbi Mendel
Abrams
Harold & Linda
Schlozman
In Honor of
Barbara & Bernard
Birnbaum
David & Mindy
Wajcman
In Honor of
Josh Stein
Marc Hammer &
Alana Muller
In Memory of
Craig Both
Steven Berman &
Judy Jacks Berman
In Memory of
Meredith Farnan
Mark & Trudy Slatkin
In Memory of
Hanorah Goldenberg
Mark & Susan Wolf
In Memory of
Serena Hammer
Hanan & Natalie
Hammer
In Memory of
Ida Joseph
Shirley Beiser

In Memory of
Louis Lieberman
Rosalyn Burnstein
In Memory of
Rae Lieberman
Rosalyn Burnstein
In Memory of
Irving Nasaw
David Nasaw
In Memory of
Golda Rosen
Nathan Rosen
In Memory of
Stanley Rostov
Judy Weitzman
In Memory of
Dr. Ben Rubin
Alan & Joan
Jacobson
Harold & Joyce Koch
Harold & Linda
Schlozman
Harris & Shevie
Winitz
In Memory of
Harry Shapiro
Patrick & Marietta
Dunn
In Memory of
Morris Singer
Nathan Rosen
In Memory of
Judy Weinberg
Douglas & Shana
Enns Enns

**HAZZAN
BEN-YEHUDA'S
DISCRETIONARY
FUND**

In Appreciation of
Hazzan Tahl
Ben-Yehuda
Jennifer Schmidt
*For a Speedy
Recovery*
Stephen Stras
Hanan Steinzeig &
Rita Brown

KCUSY FUND

In Memory of
Bessie Goldberg
John Goldberg &
Marla Brockman
In Memory of
Louis Pinsky
John Goldberg &
Marla Brockman

KIDDUSH FUND

In Honor of
Allan & Nancy
Reichman
Steven & Marcia
Schorr
Jettie Stempleman
In Memory of
Rabbi Mendel
Abrams
Roger & Berenice
Haberman
In Memory of
Esther Goldstein
Marvin & Carol
Goldstein
In Memory of
Joe Poisner
Marvin & Carol
Goldstein
In Memory of
Sal Poisner
Marvin & Carol
Goldstein

**LECHEM
FUNDRAISER**

In Memory of
Dr. Ben Rubin
Jimmy & Sonia
Rosenbloom

**LOUIS & EDITH
PINSKY FUND**

In Memory of
Louis Pinsky
Estelle Pinsky

**MARCIA EVELOFF
LECHEM FUND**

In Memory of
Clarese Greenberg
Jeffrey & Wendy
Sitzmann
In Memory of
Dr. Ben Rubin
Jeffrey & Wendy
Sitzmann

**OHEV SHOLOM-
ENID/SHALON
OFFENBACH
FUND IN SUPPORT
OF PASSPORT TO
ISRAEL**

In Memory of
Meredith Farnan
Mark Litchman

**OHEV SHOLOM-
LEGACY &
HERITAGE FUND**

*For a Speedy
Recovery*
Carol Brooks
Shirley Unell
In Memory of
Meredith Farnan
Steven Berman &
Judy Jacks Berman

**POLSKY
RELIGIOUS
SCHOOL FUND**

In Memory of
Esther Duni
Sandra Euster

**RABBI
GLICKMAN'S
DISCRETIONARY
FUND**

*For a Speedy
Recovery*
Individuals on the
Mi Shebeirakh list
Ace Allen & Donna
Oberstein
In Appreciation of
Rabbi David
Glickman
Andria Kahclamat
Alan & Debra
Kessler
Jennifer Schmidt
In Memory of
Anna & Simon
Choikhit
Steve Choikhit
In Memory of
Jacques & Elaine
Choikhit
Steve Choikhit
In Memory of
Donald Kopin
Clarence & Alice
Winer
In Memory of
Max Kopin
Clarence & Alice
Winer
In Memory of
Dr. Ben Rubin
Deborah Rosenberg

**ROMOTSKY,
PRICE, CORTES
GENETIC TESTING
FUND**

In Memory of
Lawrence Poisner
Gary Cortes

**ROSE FAMILY
EARLY
CHILDHOOD
EDUCATION
CENTER**

In Honor of
Joel & Brenda
Pelofsky
Richard & Barbara
Atlas
In Memory of
Craig Both
Estelle Berman
In Memory of
Aileen Forman
Jack Forman

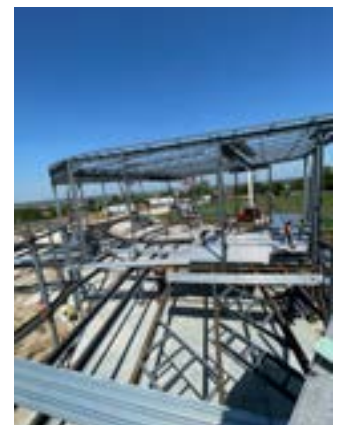
STACEY'S STUDY

In Memory of
Dr. Ben Rubin
Eric & Miriam Kaseff

**YIZKOR
REMEMBRANCE**

In Memory of
Alexander F. Muller
Max & Charlene
Muller
In Memory of
Jerome Schneider
Alan Schneider

CONSTRUCTION UPDATES



David M. Glickman
Senior Rabbi

Talia Kaplan
Rabbinic Fellow

Tahl Ben-Yehuda
Hazzan

Stefanie Misler Williams
Executive Director

Judy Jacks Berman
Director, RFECEC

Civia White
Director, PRS

Ben Novorr
*Director, Youth & Family
Programming*

Dr. Ann Karty
President

Alan L. Cohen
Rabbi Emeritus

The Congregation Beth Shalom Scroll (USPS531-420) is published monthly by Congregation Beth Shalom, 14200 Lamar, Overland Park, KS 66223. Annual Subscription \$24.00. Periodical Postage Paid in Kansas City, MO.

DATED MATERIAL

POSTMASTER: Send address changes to CONGREGATION BETH SHALOM SCROLL, 14200 Lamar, Overland Park, KS 66223.

Congregation Beth Shalom, an egalitarian Conservative synagogue, is a welcoming community of individuals from diverse backgrounds, strengthening connections with God, Torah and the Jewish people through communal commitment to prayer, study and acts of loving kindness. We strive to create Jewish Living Experiences from the new, blended community of Beth Shalom and the former Ohev Shalom.

Office 913-647-7279

MONDAY-THURSDAY 8:30 AM - 5 PM
FRIDAY 8:30 AM - 3 PM
Closed on Federal Holidays

Mt. Carmel Cemetery Hours 913-647-7279

MONDAY & WEDNESDAY 8:00 AM - 4:30 PM
TUESDAY & THURSDAY CLOSED
FRIDAY & SUNDAY 8:00 AM - 4:00 PM
SATURDAY CLOSED
NATIONAL HOLIDAYS 9:00 AM - 4:00 PM
JEWISH HOLIDAYS CLOSED

Exceptions: Thanksgiving, Christmas Day, New Year's Day & Easter

Sisterhood Gift Shop Hours

Gift Shop Schedule 913-647-7298

MONDAY & FRIDAY BY APPOINTMENT ONLY
TUESDAY 12:30 PM - 2:30 PM
WEDNESDAY 11:30 AM - 2:30 PM
THURSDAY 12:30 PM - 2:30 PM

Other Hours

EMAIL CONNIE SIMON AT STLTKC@GMAIL.COM

Sisterhood Gift Shop

Need a new tallit to start off 5784? Start the year off right at the Sisterhood Gift Shop. We have everything you need for a sweet new year, from small Apple Plates to long Yemenite Shofars.

We're open Tuesdays and Thursdays from 12:30-2:30. If those times don't work for you, it's also easy to make an appointment. Just email Connie at stltokc@gmail.com.

