



# The Scroll

## HIGH HOLIDAY SCHEDULE 2023 | 5784

### Selichot

SAT, SEPTEMBER 9

SERVICE

9:30 AM Shabbat Service . . . . . GH  
 Guest speaker Rabbi Josh Feigelson  
 8:00 PM Community Selichot Program . . . . . B'nai Jehudah  
 11:45 PM - 12:45 AM Traditional Midnight Selichot Service . RM 108

### Memorial Service

SUN, SEPTEMBER 10

SERVICE

1:00 PM Memorial Service . . . . .Mt. Carmel Cemetery  
 Rabbi David Glickman & Hazzan Tahl Ben-Yehuda

### Erev Rosh HaShanah

FRI, SEPTEMBER 15

SERVICE

6:00 - 7:00 PM Traditional Service. . . . . GH  
 Rabbi David Glickman, Rabbi Talia Kaplan & Hazzan Tahl Ben-Yehuda

### Rosh HaShanah Day 1

SAT, SEPTEMBER 16

SERVICES

8:30-1:00 PM Traditional Service. . . . . GH  
 Rabbi Scott White, Rabbi David Glickman & Hazzan Tahl Ben-Yehuda  
 Rabbi Glickman's sermon approximately 11:00 AM  
 9:00- 9:45 AM Preschool Family Service . . . . . LLPS & Playground  
 Emma Jacobson  
 9:45-10:30 AM Youth Activity . . . . . Lower Level  
 Civia White, Jamie Katz & Shira Zigler  
 10:00-12:30 PM Instrumental Music Service. . . . . LLPS  
 Rabbi Talia Kaplan & Victor Wishna  
 Rabbi Kaplan's sermon approximately 11:00 AM  
 10:30-11:15 AM Youth Service . . . . . Lower Level  
 11:15-12:00 PM Youth Activity. . . . . Lower Level  
 11:00-12:30 PM Pavilion Musaf Service. . . . . Indian Creek  
 10308 Marty St, Overland Park, KS 66212  
 103rd Street is closed west of Metcalf - need to come from Antioch  
 Norm Kahn & Rita Cortés

### Rosh HaShanah Day 2

SUN, SEPTEMBER 17

SERVICES

8:30-12:30 PM Traditional Service. . . . . GH  
 Rabbi Scott White, Rabbi Talia Kaplan & Rita Cortés  
 Rabbi Kaplan's sermon approximately 11:00 AM  
 9:00-9:45 AM Preschool Family Service . . . . . LLPS & Playground  
 Emma Jacobson

9:45-10:30 AM Youth Activity . . . . . Lower Level  
 Civia White, Jamie Katz & Shira Zigler  
 10:00-12:30 PM Rimon Service . . . . . LLPS  
 Rabbi David Glickman & Hazzan Tahl Ben-Yehuda  
 10:30-11:15 AM Youth Service. . . . . Lower Level  
 11:15-12:00 PM Youth Activity. . . . . Lower Level  
 4:00-5:00 PM Community Tashlikh/Minchah . . . Regency by the Lake  
 14800 Lamar Ave, Overland Park, KS 66223  
 Rabbi David Glickman, Rabbi Talia Kaplan & Hazzan Tahl Ben-Yehuda

### Kol Nidrei

SUN, SEPTEMBER 24

SERVICE

6:30-7:45 PM Pavilion Service. . . . .Indian Creek  
 Relaxed atmosphere, slightly abridged, traditional service.  
 All ages are welcome!  
 10308 Marty St, Overland Park, KS 66212  
 103rd Street is closed west of Metcalf - need to come from Antioch  
 Rita Cortés & Civia White  
 7:00-9:00 PM Traditional Service . . . . . GH  
 Rabbi David Glickman, Rabbi Talia Kaplan & Hazzan Tahl Ben-Yehuda

### Yom Kippur

MON, SEPTEMBER 25

SERVICES

8:30-1:30 PM Traditional Service. . . . . GH  
 Alan Edelman, Rabbi David Glickman & Hazzan Tahl Ben-Yehuda  
 Rabbi Glickman's sermon/Yizkor approximately 10:30 AM  
 9:00- 9:45 AM Preschool Family Service . . . . .LLPS & Playground  
 9:45-10:30 AM Youth Activity . . . . . Lower Level  
 Civia White, Jamie Katz & Shira Zigler  
 10:00-12:30 PM Instrumental Music Service. . . . . LLPS  
 Rabbi Talia Kaplan & Victor Wishna  
 Rabbi Glickman's sermon/Yizkor approximately 11:00 AM  
 10:30-11:15 AM Youth Service . . . . . Lower Level  
 11:15-12:00 PM Youth Activity . . . . . Lower Level  
 11:00-12:30 PM Pavilion Musaf Service . . . . . Indian Creek  
 10308 Marty St, Overland Park, KS 66212  
 103rd Street is closed west of Metcalf - need to come from Antioch  
 Norm Kahn & Rita Cortés  
 4:15 PM Pre-Minchah Study Session . . . . . GH  
 Rabbi Talia Kaplan  
 5:15 PM Minchah/Neilah/Ma'ariv . . . . . GH  
 Rabbi David Glickman, Rabbi Talia Kaplan & Hazzan Tahl Ben-Yehuda  
 7:43 PM Shofar Blast . . . . . GH

Key: GH = Goldsmith Hall LLPS = Lower Level Prayer Space



## Teshuvah is About Change, Continuity and Continuous Change

Many years ago, I described the process of Teshuvah as “Returning to a Place You’ve Never Been.”

The Hebrew word, teshuvah, is often defined as “repentance,” but a literal definition is returning. Practically, though, we are not actually “returning.” Teshuvah is about the process of self-repair. It is also about spiritual growth. The “Ba’al/ at Teshuva” often describes someone who becomes ritually observant later in life. Though the direct translation means the “repentant,” this assumes that someone who has taken on new aspects of Jewish spiritual expression were “sinning” before.

Speaking as someone who has experimented various mitzvot in different forms from adolescent until the present day – I think that this “sinner vs. repentant” paradigm an unhealthy way. Personally, I would love to find a way to encourage play, experimentation, improvisation and fluidity in forms of religious expression.

When someone is in a relationship with another – be it familial, platonic or romantic – that relationship is constantly in flux. There are waves of closeness and distance. There are passages of time with more communication and less. Also, couples and groups “play” together. Sometimes literally – creating a bridge game, a pickleball posse, or a book club. Other times, that play is simply an experiment – trying on travel together, testing out a different restaurant or coffee shop together, or pushing one another to volunteer together for a cause.

A spiritual life is also about relationship; and it is a relationship that is also constantly in flux. In order to keep the spiritual relationship fresh – whether that is a relationship with our Creator, or a relationship with our own creative Divine spark – play and experimentation can help.

As we approach the time of Rosh HaShanah and Yom Kippur, it is natural to think about Teshuvah. Teshuvah permeates the entire months of Elul and Tishrei in both our prayers and our deeds. This year, I would encourage you to think about Teshuvah as growth rather than only repair and repentance.

Yes, part of growth is repairing the brokenness we might have caused this past year. There is another part of growth – building oneself through experimentation and play. This Rosh HaShanah, I encourage finding a way to play with your Jewish living. Try something on. See how it looks on you! Play with prayer, with loving kindness, with giving, with practice, with learning. This year, let’s approach our Jewish living with a light touch, with a sense of joy, with experimentation, and above all growth. Let us find ways to change ourselves for the better that is simultaneously a continuation of our old selves and an introduction of our new selves.

My wife, Annie, and our children Gavi, Ellie and Dani join me in wishing from our family to yours, a year of good health, a year of peace, and a year of personal growth and renewal.

Shanah Tovah U’Metukah -- Best Wishes for a Sweet Renewed Year,

RABBI DAVID M. GLICKMAN  
dgllickman@bethshalomkc.org



## Our Next Chapter

Everyday, I pull up to the building and sit in the parking lot in awe. I watch as we see our Sacred Space rise from the field that I sat in many times before. Where the end of year preschool picnics were held. Where bounce houses were staked into the ground and blankets were filled with families, shoes, laughter and hot dogs. Where the Sukkot kite races succeeded because of the amazing amount of wind we have on our hill. Where we all stood, gold shovels in hand, and broke ground together.

It has been amazing to follow the progress. First, we watched them move a ton (several actually!) of dirt and rocks. I never knew how exciting it would be to watch the concrete being poured and watch how they meticulously smooth it out. Seeing the curbs take shape, and visualizing where the entrance will be. Seeing the steel being brought in and begin to show the outline of our building has brought excitement to all!

As I meet with our contractors and architects, we discuss the tiniest of details. The attention to every single one is incredible. We will soon be traveling to New Holland, Pennsylvania to look at mockups of the Aron Kodesh! They even had me take an average weight of our Torah scrolls so they could create a replica of a Torah so we can make sure the height of the custom built holders is correct, and people will be able to move the scrolls in and out of the Ark with ease.

Meetings in Rabbi Glickman's office have gotten even more inspiring as we see the potential of our future. His office window provides the perfect backdrop as the new year approaches, and our new building becomes a reality, we can envision our new chapter.

We see our youth at their b'nei mitzvah, our traditional weekly services with people picking their new, unofficially assigned seats, we see the balcony filling as more people come to hear a concert, and we even see our congregants having a beautiful space to come together under the chuppah as we already have a wedding on the books!

As we stated when we began our Sacred Space Campaign, we are building for tomorrow, today. Please join us to celebrate this momentous time in our history. We will keep sharing pictures and updates, but I invite you to come peek. It is a wonderful sight to see. Come be a part of our next chapter.

Wishing everyone a healthy, happy New Year, and we look forward to seeing you soon.

STEFANIE MISLER WILLIAMS  
EXECUTIVE DIRECTOR  
swilliams@bethshalomkc.org

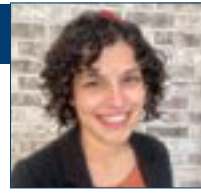
## Lulav & Etrog Orders



Please visit <https://bit.ly/44iG3c0> to order your Sukkot needs (Lulav, Etrog & Hoshanoth).

Pick-up will take place at Congregation Beth Shalom. Orders are due by Monday, September 5th, 2023 in order to arrive in time for Sukkot.





by **RABBI TALIA KAPLAN**  
[tkaplan@bethshalomkc.org](mailto:tkaplan@bethshalomkc.org)

As we head towards Rosh HaShanah, Yom Kippur, and Sukkot, the “reason for the season” is teshuvah. “Teshuvah” is often translated as “repentance,” but I prefer to translate it more precisely as “return.” At this time of year, we do the necessary spiritual and interpersonal work to try to return to the most essential, authentic versions of ourselves.

In a Hasidic story, the great Reb Zusha tells his students that when he encounters God after he dies, God will not ask him, “Why were you not more like Moses,” but rather, “Why were you not more like Zusha?” It is easy at this time of year, and always, to hold ourselves to external standards, or to look over our shoulder and see what the person next to us is doing. Instead, what if we each had our own “Zusha” moment? How can we be more like our true selves? If we don’t know yet who or what that is, how might we discern it? It might take some soul searching to figure out what that is, but it is a deeply Jewish and deeply important process for each of us to undergo.

As I get to know the Beth Shalom community, I am excited to share parts of myself and get to know who each of you truly are. I also hope to become a part of the ongoing process of deciding who we want to be as a community, one that is made up of longtime, multigenerational member households and new members; individuals and families; Ohev Shalom veterans and Beth Shalom veterans; interfaith couples and couples raised in the same faith tradition; familiar clergy and new clergy. Who can we be when we bring these and the many other parts of our identities and come together in service of something larger?

Embarking on this process of teshuvah, I invite us to bear in mind not only the ways we aspire to grow personally, but also how we hope to engage in community. It is truly a pleasure to have been welcomed into this process with you. May it be a sweet new year for you, your loved ones, and our world.



### Spoiler Alert! What is new at PRS?

by **CIVIA WHITE**  
[cwhite@bethshalomkc.org](mailto:cwhite@bethshalomkc.org)

**Middle School:**  
 PRS is offering a new program called "Ulpan" for kids in middle school. The 7th and 8th-grade students will meet with Israeli teachers to develop Hebrew speaking skills in fun and entertaining ways. The kids will perform skits, sing modern Hebrew songs, and prepare practical dialogs which they can use for getting around when they visit Israel.

**Elementary:**  
 PreK at PRS is filling up quickly! This preschool Sunday school initiative is made possible by generous donations from the Goldstein Family Foundation and the Joshua & Abigail Millan Family. The children will meet one Sunday each month for a morning of music, stories, prayers, art, and playtime with Jewish friends. Their teacher, Nira Solomon who teaches K at HBHA, will chat with them in Hebrew and get these little ones ready for Kindergarten at PRS! Wednesday sessions for students in grade 3-7 will start with an optional early drop-off time of 3:15pm. Kids will have time to work on school homework, play board games, and visit with friends in Goldsmith Hall until 4:15pm when services with Hazzan Ben-Yehuda begin. The PRS

students are so fortunate to have Stella Shapiro (who grew up at Beth Shalom) as our new art teacher! She is amazing at integrating Jewish concepts into art projects. She will also be introducing art history and art appreciation to the curriculum and kids. These special friendships begin at creative school programming and last into the future.

The entire congregation benefits from supporting the Jewish Education of our youth. You are always welcome to plan a visit to the school; it would be wonderful to have you share your ideas with the faculty and your talents with the students.

I look forward to seeing you during the High Holiday season this year and for years to come.

From my family (Rabbi Scott, Jacob, and Benjamin), to yours, have a Healthy and Happy new year and much success in the years ahead.

Blessings,

Civia White



### Sunset, Sunrise

by **DR. ANN KARTY** | PRESIDENT

“But, where are the cicadas?”

All summer long this year, I kept wondering why it seemed so quiet. Yes, we had our typical Kansas thunderstorms with wind, hail, and rain shafts that doused everything in its path depending which side of the street you were standing. Branches fell and trees were uprooted. For many, even electricity disappeared for a few days. Afterwards, the lawns flourished, the humidity rose, and the sky cleared. Aside from street sounds, passing trucks, dogs barking, and some cardinals living in my backyard, it was almost silent.

I was missing the beautiful sounds of the cicadas. I remember sitting outside with my grandmother listening to cicadas. The crescendo-decrescendo sing-song they made was welcoming and reassuring. When I hear them, I think of her.

Recounting and retelling family history, much like stories in the Torah, help us understand where we have been so we can better direct why, and where, we are going.

With the gentle wind blowing, bellowing branches of the nearby willow tree used to stroke my arm and “nice me” (as

my grandma would call it). The stories she would tell me those evenings were passed down from her parents. I learned how her father arrived in the United States at 17, by himself, and was a shoe cobbler. Her mother and sisters all had to hide behind a chimney when the Bolsheviks came and, once sponsored, they were allowed to come to the United States.

What stories do you share?

Even though it seems the cicadas came later this year, I finally was able to hear them. The rubbing of the wings (in large numbers) causes a choir of chirping, clicking, and pulsatile buzzing. Folklore suggests cicadas start singing six weeks prior to the first frost, so we will see.

Remembering the past helps center myself to focus on the future. As I think about the upcoming chaggim and what the new year can bring, the rhythmic, cyclical sounds of the cicadas are calming. I hope they are for you, too.

I wish you all a Happy, Healthy New Year. Shana Tova.

### Social Justice Committee Hands over Keys to First Shalom Homes Homeowner



On Sunday, August 13, members of the Beth Shalom Social Justice Committee welcomed first-time homeowners Javier Chamela and Katia Pabiola Mendez and their three children to their new home. The single-family home was made possible by many generous donors through a partnership between Shalom Homes and Tikkun KC. The Beth Shalom Social Justice Committee created Shalom Homes in response to the lack of affordable homes and the racial injustice related to home ownership. Members of the Social Justice committee actively participated in the process of building the house by raising much needed funds and doing some interior painting.





by JILL GOLDSTEIN | PRESIDENT

[jgoldstein0127@gmail.com](mailto:jgoldstein0127@gmail.com) | 913-636-9725

Chazak v'Ematz. Where have you seen this term before?

This was the national theme for this past year's Sisterhood Torah Fund Drive.

Being a teacher for more than 50 years, of course my initial reaction to this phrase was to see how many of us know what it means and then to ask, how many of us can relate it to our Jewish Heritage and are now using those traits in our daily lives?

The words, of course, translate from Hebrew into English as Strong and Courageous. What does that mean? According to the dictionary, these words mean:

- mentally powerful or vigorous
- especially able, competent, or powerful
- of great moral power, firmness, or courage

In Deuteronomy, (the final Book we begin before the High Holidays) Moses imbues his successor Joshua with courage to lead the Jewish people into the promised land without him by charging him: chazak ve'ematz, "be strong and courageous." Each of us receives a similar charge at the start of every new Jewish year when we recite Psalm 27 around the High Holidays. It ends with these words of exhortation: chazak

veya'ametz libecha, "be strong, and strengthen your heart." This verse encourages every one of us to cultivate the inner strength we need to meet whatever challenges emerge in the future.

We are not Moshe or Joshua, and we are not facing the possibility of annihilation by crossing into a new land. However, we are facing a new year, and like the Jewish people crossing over from desert into the Land of Milk and Honey, we will face new challenges each and every day, whether they be socioeconomic, political, medical, etc. So, let us all remember as we go forward, chazak v'emetz. Be confident in our decisions, vigorous in carrying them out, face new challenges with courage, and then, remember, we at Beth Shalom are a community—a family here to support you.

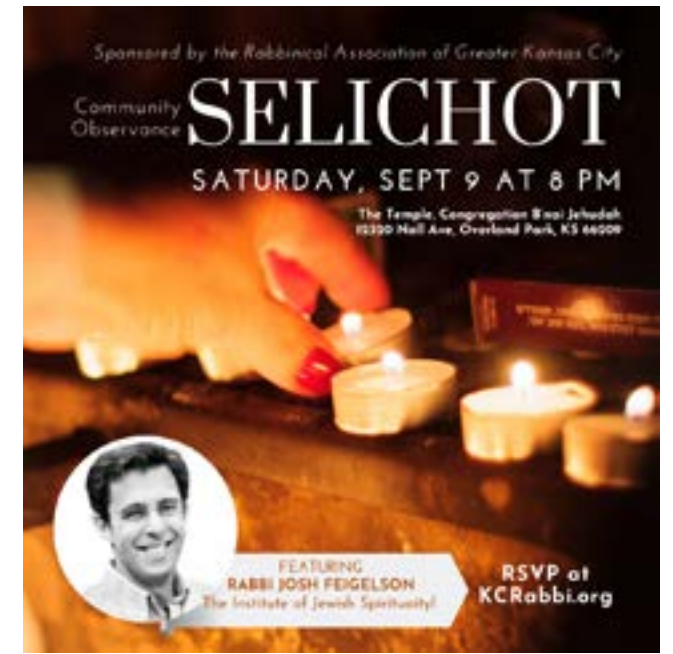
I look forward to working with all of my CBS "Sisters" and the CBS mishpacha.

Chazak vey'a'metz libecha,

JILL GOLDSTEIN  
SISTERHOOD PRESIDENT



Beth Shalom Sisterhood presents  
Braid, Twist and Take home your round holiday challah  
Thursday, September 7  
7:00 to 9:00 p.m. Goldsmith Hall  
\$18 for members \$20 for non-members  
Cash check or venmo @DanielleAntes  
For further information contact Danielle @ 913-484-5040



FROM THE Director of Youth & Family Programming



Thinking (and Overthinking) My Way Through the Holidays

by BEN NOVORR  
[youthdirector@bethshalomkc.org](mailto:youthdirector@bethshalomkc.org)

Those who know me well know I can be a bit of an over-thinker, and there is no time of year where I overthink more than around the High Holidays.

I ask myself a myriad of questions, from deep ones like "how can I really take advantage of the new start that a new year provides?" or "how can I truly atone in the most genuine way?", to seemingly inconsequential ones such as "are the apples I bought to dip in honey too tart?"

I've been working at Beth Shalom for over a year, and in that time, there was one thing that drove me crazy: the storage closet in the youth lounge. On my first day, I found a closet that held much of the history of youth programming at Beth Shalom. There were old KCUSY photos and t-shirts, Purim carnival games, old toys, games, and art supplies. It was so full I couldn't even walk through it.

Despite the disorganization driving me crazy, for the first 11 months I was here, it sat nearly untouched... as a messy memorial of the past.

So why did I wait so long to clean it?

Truthfully it seemed like a task with no ending... something both incredibly urgent and not urgent at all. That being said,

this summer, I cleaned the closet, neatly labeled boxes, and made it a usable space to be proud of. What seemed like an endless task was suddenly at its end.

So why still doesn't it feel complete?

Well... that's where these big questions surrounding Rosh HaShanah come in. I shared earlier that one of the big questions I ask myself is "how can I really take advantage of the new start that a new year provides?" Having this newly clean closet feels like a fresh slate for the upcoming year. A vast sea of possibilities of what Beth Shalom youth programming can look like. So the question remains—"how will we take advantage of and seize this amazing opportunity that this clean programming closet represents?"

Going into the new year, I am reminded of the opportunity to start fresh and create something worth working hard and conquering challenges for for the teens and families of our congregation. This is something that I look forward to doing with all of you.

If I ever seem lost and can't seem to figure out how to take advantage of all the possibilities that 5784 has to offer... you can probably find me thinking (or overthinking) about it in the storage closet.



by **Judy Jacks Berman** | DIRECTOR

[jjb@bethshalomkc.org](mailto:jjb@bethshalomkc.org) | 913-647-7287

Children at Rose Family ECEC learned about bees from beekeeper Sheryl Kaplan last year. We welcome Sheryl again this year to teach us more about bees as we prepare again for Rosh HaShanah! Hands on, concrete learning is the best way for young children to learn!!

This year we are looking so forward to a year filled with fun, exciting experiences!!



FROM THE POLSKY RELIGIOUS SCHOOL



Margot Ross is ready for pre-K at PRS. This brand new initiative is sponsored by the Goldstein Family Foundation and Josh and Abigail Miilan.



PRS faculty members (Nina McNay, Dawn Gale, Leah Haller, Laura Galler, Ben Novorr, and Lauren Levy) attended a special learning session for religious school educators during the annual Day of Discovery. They are all so excited to bring what they learned to their classrooms at PRS this year!

*Yahrtzeits* Join us for morning or evening minyan to say Kaddish for your loved one.

**SEPT 1-15 ELUL**

Abe Bergman  
Olga Brüller  
Selma S. Feld  
Suzanne Jo Geller  
Bessie Ginsberg  
Rose Markowitz  
Linda Tulchinsky  
Siegel  
Sanders Sosland  
Sender Szajfeld

**SEPT 2-16 ELUL**

Lucy Greenberg  
Dorothy Harding  
Samuel Kaplan  
Sarah Plattner  
Melvin Rolsky  
Jerome Howard  
Schrader  
Benne Yukon

**SEPT 3-17 ELUL**

Sam Bobrov  
Rose Bordman  
Katie Brown  
Aaron Cohen  
Minnie Cohen  
Mary Ann Cohn  
Robert Ginsberg  
Marvin Korn  
David Krasner  
Samuel H. Levin  
Sam Rosenberg  
Lena Topf  
David Wishnow

**SEPT 4-18 ELUL**

Sophie Sonya  
Agron  
Leo Feingold  
Louis Goldstein  
J. Harry Kulakofsky  
Rose H. Overbeck  
David Partnoy  
Sarah Viner  
Peltzman  
Sol Posner  
Edith Goller  
Rosenberg  
Seymour Alex "Cy"  
Rudnick  
Oscar Untrif

**SEPT 5-19 ELUL**

Fannie Brams  
Elo Frizman  
Bessie Gottlieb  
Claire Gutovitz  
Morris Jacobs  
Miriam Krantz  
Anne Bondell  
Pollock  
Freda Rosenbaum  
Naomi Shabason  
Sherman Irvin  
Weintraub  
Anna Yukon

**SEPT 6-20 ELUL**

Sol Botwin  
Abe Broudy  
Lottie Feinberg  
Fred S. Goldsmith  
Minnie L. Hauser

Selma Joseph  
Sol Kaplan  
Morris Mallin  
Abraham Benjamin  
Passman  
Bertha Rosenberg  
David Schuster  
Evelyn  
Wasserstrom  
Flora Rosenblum  
Widlansky

**SEPT 7-21 ELUL**

Benjamin B. Aaron  
Dora Baraban  
Alex Berger  
Joseph Bronstein  
Meyer Cohen  
Reuben Finkelstein  
Milton Forman  
Evelyn Greenberg  
Louis Hammer  
Violet D. Hoffman  
Lieb Lieberman  
Robert Shapiro  
Joseph H. Siegel  
Fannie Silver  
Norman Weinstein  
Edward Wolberg

**SEPT 8-22 ELUL**

Albert Bell  
Morris Copaken  
Allen Drew  
Hanan Eisen  
Gertrude Gandal  
Joseph David  
Greenbaum  
Harold Lee Joseph  
Tamma Perlmutter  
Annie Picker  
Louis Portman  
Beryl Rubenstein  
Rachel Schwartz  
Samuel L. Siegel  
Margaret  
Weinstock  
Alvin Zeff

**SEPT 9-23 ELUL**

Rose Barabechik  
Florence Byer  
David Cohen  
Daniel L. Feingold  
Leah Gandal  
Yudas Graves  
Zelda Lerer  
Rose Levine  
Ben Penner  
Fannie Rich  
David Sanell  
Sol Schorr  
Ida Rosenbloom  
Steinberg  
Mildred Supofsky

**SEPT 10-24 ELUL**

Eva Copeland  
Abraham Frost  
Ben Gordon  
Lillian Kanter  
Gus Minkin  
Norman Polsky  
Sherwin Nathan  
Salasche

Katianne Bordy  
Tannenwald  
Isaac Vogel

**SEPT 11-25 ELUL**

Ida Berman  
Sidney Brown  
Esther Cohen  
Albert A. Diamond  
Jacob Harris  
Gilgus  
Marie Greenberg  
Blanche Lerner  
Sanford Molos  
Samuel E.  
Segelbohm  
Celia Sher  
Sylvan Siegler

**SEPT 12-26 ELUL**

Saul Bitner  
Frank Drew  
Lena Glazer  
Max Hoffman  
Millie Kemp Levy  
Louis S. Sachs  
Leo Schleifstein  
Coralee Snyder  
Baily Taxman  
Daniel Tucker

**SEPT 13-27 ELUL**

Emil Barsky  
Mayme E. Becker  
Edwin Chambers  
Arthur Frank  
Rose Lieber  
Rebecca Louis  
Rose Milens  
Frank Soltz  
William Stein  
Ida Swerdloff  
Dolores Wedlan

**SEPT 14-28 ELUL**

Jenny Blum  
Morris Cohen  
Karl Copelman  
Myron Diamond  
Joe M. Dunn  
Michael Fingersh  
Melissa  
Goldenberg  
Maurice Horowitz  
Harry Kisluk  
Blanche Marks  
David Parelman  
Arnold Parnes  
Harry Stevens  
Sarah Summers  
Alvin R. Tiber  
Bernard Carl Unger  
Esther Weiner

**SEPT 15-29 ELUL**

Avraham Elia ben  
Reb Yakov Zev  
David (Tim) Blond  
Allene Carroll  
Sol E. Dennis  
Sidney Erdman  
Paul Gilgus  
Leon C. Grossman  
Rose Kosovitz  
Harry J. Oshiver  
Samuel I. Oshiver

Ralph Rosenberg  
Irving Schoen  
Robert Seiffer  
Roe Silberman  
Mezeh Machleh  
Viner

**SEPT 16-1 TISHREI**

Bessie Berman  
Samuel M. Bigus  
Annie Bortnick  
Daniel Brenner  
Berl Chaba  
Harry Chaba  
Melvin L. Krashin  
George M. Levich  
Esther Levine  
Myer Lieberman  
Etta Magazine  
Sidney Magazine  
Jean Shear Robin  
Khaya Schuster  
Harvey Sporn  
Sylvia Lee Traxler

**SEPT 17-2 TISHREI**

Rita Bayless  
Jack Bohm  
Philip Herowitz  
Jacob Hymman  
Herman Koch  
Rose Rapaport  
Ben Rosenberg  
Joseph Jacob  
Singmon  
Anna Leah Stolov  
Morris Traxler

**SEPT 18-3 TISHREI**

Sarah Behrman  
Dora Schmual  
Dekro  
Joseph Dekro  
Miriam Kopperman  
Dickstein  
Isaac Ducov  
Anna Rachel  
Koppel  
Sherburne Krieger  
William Jack  
Newton  
Frieda Schlein  
Jack Isaac Shear  
Anna Sherr-

**SEPT 19-4 TISHREI**

Anne Baum  
Max Berman  
Ida Devins  
Liba Falus  
Sol Ginsberg  
Morris Goldstein  
Cecil Kaminsky  
Berl Chaba  
Harry Chaba  
Melvin L. Krashin  
George M. Levich  
Esther Levine  
Myer Lieberman  
Etta Magazine  
Sidney Magazine  
Jean Shear Robin  
Khaya Schuster  
Harvey Sporn  
Sylvia Lee Traxler

**SEPT 20-5 TISHREI**

Esther Becker  
Evelyn Strauss  
Brown  
Sara Davidov  
Rose Reva  
Goldberg  
Minnie Gordon  
Marian Hermanson  
Samuel Katcher  
Samuel Katcher  
Samuel Brownie  
Myron  
George C. Newberg  
Dorothy A. Novorr  
Morris Rogoff  
Sadye Rubinfire  
Albert Saver  
Abraham Steinzeig  
Herman Tweed  
Isaabel Samuels  
Viner

Sandhaus  
Juliette Seiden  
Lazarus Smith  
Joe Wolberg

**SEPT 21-6 TISHREI**

Esther Becker  
Evelyn Strauss  
Brown  
Sara Davidov  
Rose Reva  
Goldberg  
Minnie Gordon  
Marian Hermanson  
Samuel Katcher  
Samuel Katcher  
Samuel Brownie  
Myron  
George C. Newberg  
Dorothy A. Novorr  
Morris Rogoff  
Sadye Rubinfire  
Albert Saver  
Abraham Steinzeig  
Herman Tweed  
Isaabel Samuels  
Viner

**SEPT 22-7 TISHREI**

Lisa Gayle Barash  
Nellie Florence  
Coleman  
Aida Gilgore  
Fannie Karosen  
Anna Rachel  
Koppel  
Sherburne Krieger  
William Jack  
Newton  
Frieda Schlein  
Jack Isaac Shear  
Anna Sherr-

**SEPT 23-8 TISHREI**

William B.  
Berkowitz  
Benjamin Brand  
Minnie Frischer  
Golda House  
Flora Pelofsky  
Joe Penner  
Joe Rubin  
Joann Studna

**SEPT 24-9 TISHREI**

Milton Adler  
Arnold Birnbaum  
Grace Rein Cohen  
Esther Gibian  
Rebecca Lillian  
Grossman  
Baruch Joel  
Harding  
Miriam Gittel  
Harding  
Ida Rae Katzman  
Samuel Kopel  
Melba Levine  
Sol Lipsey  
Sam Marcus  
Ethel Markowitz  
Jacob Risburd  
Louis Rosenberg

Anisman  
Gertrude Weneck

**SEPT 25-10 TISHREI**

Samuel Brockman  
Akiba Byers  
Vellie Dubinsky  
Nettie Feinberg  
Avrohom Felman  
Raizel Felman  
Meyer Finkelstein  
Sarah Gardesky  
Eli Grossman  
Elsa Gundelfinger  
Tiberius Klausner  
Isaak Levine  
Harold L. Marks  
Joseph Moskowitz  
Edith Pinsky  
Harry Rubenstein  
Prywa Salzenstein  
Freidel Schwartz  
Jacob Schwartz  
Nathan Schwartz  
Sashe Schwartz  
Israel Weinstein  
Nessy Louise  
Weinstein

**SEPT 26-11 TISHREI**

Louis Curmonow  
Edith Duni  
Edna Ginsberg  
Joseph Greenberg  
Morris Isenberg  
Bernard Kessler  
Boris David  
Kleiman  
Sandra Sosland  
Marder  
Theresa Meyer  
Robert M. Rapaport

**SEPT 27-12 TISHREI**

Samuel Brockman  
Akiba Byers  
Vellie Dubinsky  
Nettie Feinberg  
Avrohom Felman  
Raizel Felman  
Meyer Finkelstein  
Sarah Gardesky  
Eli Grossman  
Elsa Gundelfinger  
Tiberius Klausner  
Isaak Levine  
Harold L. Marks  
Joseph Moskowitz  
Edith Pinsky  
Harry Rubenstein  
Prywa Salzenstein  
Freidel Schwartz  
Jacob Schwartz  
Nathan Schwartz  
Sashe Schwartz  
Israel Weinstein  
Nessy Louise  
Weinstein

**SEPT 28-13 TISHREI**

Samuel Brockman  
Akiba Byers  
Vellie Dubinsky  
Nettie Feinberg  
Avrohom Felman  
Raizel Felman  
Meyer Finkelstein  
Sarah Gardesky  
Eli Grossman  
Elsa Gundelfinger  
Tiberius Klausner  
Isaak Levine  
Harold L. Marks  
Joseph Moskowitz  
Edith Pinsky  
Harry Rubenstein  
Prywa Salzenstein  
Freidel Schwartz  
Jacob Schwartz  
Nathan Schwartz  
Sashe Schwartz  
Israel Weinstein  
Nessy Louise  
Weinstein

**SEPT 29-14 TISHREI**

Samuel Brockman  
Akiba Byers  
Vellie Dubinsky  
Nettie Feinberg  
Avrohom Felman  
Raizel Felman  
Meyer Finkelstein  
Sarah Gardesky  
Eli Grossman  
Elsa Gundelfinger  
Tiberius Klausner  
Isaak Levine  
Harold L. Marks  
Joseph Moskowitz  
Edith Pinsky  
Harry Rubenstein  
Prywa Salzenstein  
Freidel Schwartz  
Jacob Schwartz  
Nathan Schwartz  
Sashe Schwartz  
Israel Weinstein  
Nessy Louise  
Weinstein

Sarah Salkind  
Fred Schechter  
Morris Shaffer  
Abraham B. Starr  
Harriette Tivin

**SEPT 30-15 TISHREI**

Bernie Balter  
Bessie Becker  
Blanche Bernbaum  
Sarah Bisman  
Anna Ducov  
Blanche Sosland  
Lipari  
Barnard Marks  
Rose Rositsky  
Essie Shaw  
Samuel Stein  
Jennie Steinberg  
Yente Weiner  
Hyman Zeldin

**SEPT 31-16 TISHREI**

Samuel Brockman  
Akiba Byers  
Vellie Dubinsky  
Nettie Feinberg  
Avrohom Felman  
Raizel Felman  
Meyer Finkelstein  
Sarah Gardesky  
Eli Grossman  
Elsa Gundelfinger  
Tiberius Klausner  
Isaak Levine  
Harold L. Marks  
Joseph Moskowitz  
Edith Pinsky  
Harry Rubenstein  
Prywa Salzenstein  
Freidel Schwartz  
Jacob Schwartz  
Nathan Schwartz  
Sashe Schwartz  
Israel Weinstein  
Nessy Louise  
Weinstein





September Anniversaries

If you want to make a donation, in honor of your anniversary, contact Melisa, 913-647-7281.

DAY	YEARS	DAY	YEARS		
1	Steven & Stacy Brown . . . . .	21	6	Scott & Debra Davis . . . . .	36
1	Jeffrey & Linda Sander . . . . .	38	6	Abraham & Marlene Kopec . . . . .	63
1	Richard & Connie Simon . . . . .	32	6	Shelly & Alex Malyarov . . . . .	14
1	Gabriel & Mullokandova Mullokandov . . . . .	1	6	Jay & Erica Reich . . . . .	14
2	Michael & Renana Abrams . . . . .	33	7	Daniel & Janna Rosenthal . . . . .	20
2	Neil & Alexis Miller . . . . .	11	10	Aaron & Jennifer Spiegel . . . . .	22
2	Eran & Yael Re'em . . . . .	24	11	Elliott & Katharine Hollub . . . . .	63
3	Seth & Robyn Freiden . . . . .	17	12	Scott & Debra Goldstein . . . . .	19
3	Phillip & Barbara Hodes . . . . .	56	16	Tony & Kelly Shapiro . . . . .	25
3	Kurt & Stephanie Kavanaugh . . . . .	34	17	David Gale & Gina Kaiser . . . . .	34
3	Larry & Linda Lessner . . . . .	45	17	Isaac & Alexis Stone . . . . .	6
4	Roberta & Sam Goller . . . . .	12	19	Steven & Joan Israelite . . . . .	59
4	Joshua & Leah Langert . . . . .	12	19	Stan & Mary Weiner . . . . .	53
4	Steven & Judith Sherry . . . . .	63	20	Richard & Lisa Hurst . . . . .	31
4	Sarah & Daniel Stras . . . . .	7	21	Jeffrey & Valerie Gasser . . . . .	37
4	Jonathan Gavra & Jennifer Davis . . . . .	7	26	Phyllis & Tonis Barkley . . . . .	8
5	Michael & Francine Farkas . . . . .	41	27	Leonard & Elizabeth Hershman . . . . .	53
5	Allen & Gail Gutovitz . . . . .	52	27	Max & Julie Soloman . . . . .	23
6	Gregory & Susan Azorsky . . . . .	36			
6	Lewis & Carol Berey . . . . .	58			

**MINYANAIRE OF THE MONTH: AUDREY ASHER**

"I attend minyan on Fridays once a month and more often when can. What draws me is this: saying Kaddish. Though I can say Kaddish for my parents whenever Yizkor services occur throughout the year and on the Shabbat before the yahrzeit date, saying Kaddish in a minyan on the Yahrzeit date is a completely different experience.

First, I am called to the bimah, the ark is opened, my mother's or father's name is said aloud, and then the Hazzan chants the El Moli Rachamim. At the end of the service, am invited to say a few words about my mother or father.

Each year I try to remember something different, so I reflect on that a few days beforehand. Because this is meaningful to me, I go to minyan to support others who have a yahrzeit or are in their period of mourning. Lastly, I go to minyan to see my buddies who also go to minyan!"



**Bat Mitzvah**

Sara Garry  
September 2 / 16 Elul

Sara Garry is the daughter of Michael Garry & Rebecca Green-Garry and sister of Shoshanna and Meyer Garry. Sara is the granddaughter of Josh and Ronna Garry of Leawood, Kansas and Jeff and Caryn Green of Glenview, Illinois. She attends The Barstow School. Sara is found on the volleyball courts, babysitting, reading a book or hanging by a body of water. For her bat mitzvah project she volunteered on Tuesday nights at the Ronald McDonald House of KC.



Todah Rabbah!

Contributions through August 14 are listed below. Thank you for thinking of us.

**BETH SHALOM CHESED FUND**

*In Memory of*  
Fred S. Berman  
Steven Berman & Judy Jacks Berman

*In Memory of*  
Bessie & Joe Brenner  
Dolores Sosnow

**BETH SHALOM GENERAL FUND**

*In Honor of*  
Rabbi Mendel Abrams

*In Honor of*  
Harold & Linda Schlozman

*In Honor of*  
Barbara & Bernard Birnbaum

*In Honor of*  
David & Mindy Wajcman

*In Honor of*  
Josh Stein

*In Honor of*  
Marc Hammer & Alana Muller

*In Memory of*  
Craig Both

*In Memory of*  
Steven Berman & Judy Jacks Berman

*In Memory of*  
Meredith Farnan

*In Memory of*  
Mark & Trudy Slatkin

*In Memory of*  
Hanorah Goldenberg  
Mark & Susan Wolf

*In Memory of*  
Serena Hammer

*In Memory of*  
Hanan & Natalie Hammer

*In Memory of*  
Ida Joseph

*In Memory of*  
Shirley Beiser

*In Memory of*  
Louis Lieberman

*In Memory of*  
Rosalyn Burnstein

*In Memory of*  
Rae Lieberman

*In Memory of*  
Rosalyn Burnstein

*In Memory of*  
Irving Nasaw

*In Memory of*  
David Nasaw

*In Memory of*  
Golda Rosen

*In Memory of*  
Nathan Rosen

*In Memory of*  
Stanley Rostov

*In Memory of*  
Judy Weitzman

*In Memory of*  
Dr. Ben Rubin

*In Memory of*  
Alan & Joan Jacobson

*In Memory of*  
Harold & Joyce Koch

*In Memory of*  
Harold & Linda Schlozman

*In Memory of*  
Harris & Shevie Winitz

*In Memory of*  
Harry Shapiro

*In Memory of*  
Patrick & Marietta Dunn

*In Memory of*  
Morris Singer

*In Memory of*  
Nathan Rosen

*In Memory of*  
Judy Weinberg

*In Memory of*  
Douglas & Shana Enns Enns

**HAZZAN BEN-YEHUDA'S DISCRETIONARY FUND**

*In Appreciation of*  
Hazzan Tahl Ben-Yehuda

*In Appreciation of*  
Jennifer Schmidt

*For a Speedy Recovery*  
Stephen Stras

*For a Speedy Recovery*  
Hanan Steinzeig & Rita Brown

**KCUSY FUND**

*In Memory of*  
Bessie Goldberg

*In Memory of*  
John Goldberg & Marla Brockman

*In Memory of*  
Louis Pinsky

*In Memory of*  
John Goldberg & Marla Brockman

**KIDDUSH FUND**

*In Honor of*  
Allan & Nancy Reichman

*In Honor of*  
Steven & Marcia Schorr

*In Memory of*  
Jettie Stempleman

*In Memory of*  
Rabbi Mendel Abrams

*In Memory of*  
Roger & Berenice Haberman

*In Memory of*  
Esther Goldstein

*In Memory of*  
Marvin & Carol Goldstein

*In Memory of*  
Joe Poisner

*In Memory of*  
Marvin & Carol Goldstein

*In Memory of*  
Sal Poisner

*In Memory of*  
Marvin & Carol Goldstein

**LECHEM FUNDRAISER**

*In Memory of*  
Dr. Ben Rubin

*In Memory of*  
Jimmy & Sonia Rosenbloom

**LOUIS & EDITH PINSKY FUND**

*In Memory of*  
Louis Pinsky

*In Memory of*  
Estelle Pinsky

**MARCIA EVELOFF LECHEM FUND**

*In Memory of*  
Clarese Greenberg

*In Memory of*  
Jeffrey & Wendy Sitzmann

*In Memory of*  
Dr. Ben Rubin

*In Memory of*  
Jeffrey & Wendy Sitzmann

**OHEV SHOLOM-ENID/SHALON OFFENBACH FUND IN SUPPORT OF PASSPORT TO ISRAEL**

*In Memory of*  
Meredith Farnan

*In Memory of*  
Mark Litchman

**OHEV SHOLOM-LEGACY & HERITAGE FUND**

*For a Speedy Recovery*  
Carol Brooks

*For a Speedy Recovery*  
Shirley Unell

*In Memory of*  
Meredith Farnan

*In Memory of*  
Steven Berman & Judy Jacks Berman

**POLSKY RELIGIOUS SCHOOL FUND**

*In Memory of*  
Esther Duni

*In Memory of*  
Sandra Euster

**RABBI GLICKMAN'S DISCRETIONARY FUND**

*For a Speedy Recovery*  
Individuals on the Mi Shebeirakh list

*For a Speedy Recovery*  
Ace Allen & Donna Oberstein

*In Appreciation of*  
Rabbi David Glickman

*In Appreciation of*  
Andria Kahclamat

*In Appreciation of*  
Alan & Debra Kessler

*In Appreciation of*  
Jennifer Schmidt

*In Memory of*  
Anna & Simon Choikhit

*In Memory of*  
Steve Choikhit

*In Memory of*  
Jacques & Elaine Choikhit

*In Memory of*  
Steve Choikhit

*In Memory of*  
Donald Kopin

*In Memory of*  
Clarence & Alice Winer

*In Memory of*  
Max Kopin

*In Memory of*  
Clarence & Alice Winer

*In Memory of*  
Dr. Ben Rubin

*In Memory of*  
Deborah Rosenberg

**ROMOTSKY, PRICE, CORTES GENETIC TESTING FUND**

*In Memory of*  
Lawrence Poisner

*In Memory of*  
Gary Cortes

**ROSE FAMILY EARLY CHILDHOOD EDUCATION CENTER**

*In Honor of*  
Joel & Brenda Pelofsky

*In Honor of*  
Richard & Barbara Atlas

*In Memory of*  
Craig Both

*In Memory of*  
Estelle Berman

*In Memory of*  
Aileen Forman

*In Memory of*  
Jack Forman

**STACEY'S STUDY**

*In Memory of*  
Dr. Ben Rubin

*In Memory of*  
Eric & Miriam Kaseff

**YIZKOR REMEMBRANCE**

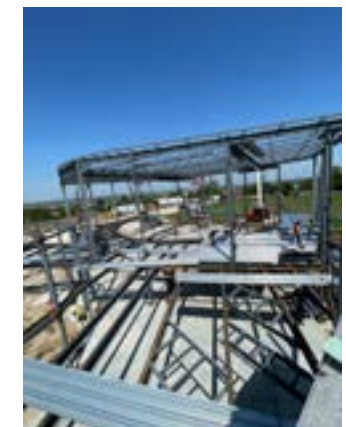
*In Memory of*  
Alexander F. Muller

*In Memory of*  
Max & Charlene Muller

*In Memory of*  
Jerome Schneider

*In Memory of*  
Alan Schneider

CONSTRUCTION UPDATES



David M. Glickman  
*Senior Rabbi*

Talia Kaplan  
*Rabbinic Fellow*

Tahl Ben-Yehuda  
*Hazzan*

Stefanie Misler Williams  
*Executive Director*

Judy Jacks Berman  
*Director, RFECEC*

Civia White  
*Director, PRS*

Ben Novorr  
*Director, Youth & Family  
Programming*

Dr. Ann Karty  
*President*

Alan L. Cohen  
*Rabbi Emeritus*

The Congregation Beth Shalom Scroll (USPS531-420) is published monthly by Congregation Beth Shalom, 14200 Lamar, Overland Park, KS 66223. Annual Subscription \$24.00. Periodical Postage Paid in Kansas City, MO.

**DATED MATERIAL**

**POSTMASTER:** Send address changes to CONGREGATION BETH SHALOM SCROLL, 14200 Lamar, Overland Park, KS 66223.

*Congregation Beth Shalom, an egalitarian Conservative synagogue, is a welcoming community of individuals from diverse backgrounds, strengthening connections with God, Torah and the Jewish people through communal commitment to prayer, study and acts of loving kindness. We strive to create Jewish Living Experiences from the new, blended community of Beth Shalom and the former Ohev Shalom.*

**Office 913-647-7279**

MONDAY-THURSDAY 8:30 AM - 5 PM  
FRIDAY 8:30 AM - 3 PM  
*Closed on Federal Holidays*

**Mt. Carmel Cemetery Hours 913-647-7279**

MONDAY & WEDNESDAY 8:00 AM - 4:30 PM  
TUESDAY & THURSDAY CLOSED  
FRIDAY & SUNDAY 8:00 AM - 4:00 PM  
SATURDAY CLOSED  
NATIONAL HOLIDAYS 9:00 AM - 4:00 PM  
JEWISH HOLIDAYS CLOSED

*Exceptions: Thanksgiving, Christmas Day, New Year's Day & Easter*

**Sisterhood Gift Shop Hours**

*Gift Shop Schedule* 913-647-7298

MONDAY & FRIDAY BY APPOINTMENT ONLY  
TUESDAY 12:30 PM - 2:30 PM  
WEDNESDAY 11:30 AM - 2:30 PM  
THURSDAY 12:30 PM - 2:30 PM

*Other Hours*

EMAIL CONNIE SIMON AT STLTKC@GMAIL.COM

**Sisterhood Gift Shop**

Need a new tallit to start off 5784? Start the year off right at the Sisterhood Gift Shop. We have everything you need for a sweet new year, from small Apple Plates to long Yemenite Shofars.

We're open Tuesdays and Thursdays from 12:30-2:30. If those times don't work for you, it's also easy to make an appointment. Just email Connie at stltokc@gmail.com.

