

# The Mini Scroll

## A Productive Year in Review

BY DR. ANN KARTY, PRESIDENT

Congregation Beth Shalom is a diverse, egalitarian, conservative Jewish community striving to enhance life-long connections to Judaism and to each other through prayer, spirituality, learning and friendship.

Beth Shalom strives to be a synagogue of dedicated, involved congregants:

- Passing on the traditions and values of Conservative Judaism to the next generation and beyond

- Committing ourselves to life-long learning
- Repairing the world through acts of loving kindness

- Supporting one another in times of joy, sorrow and need

- Growing an engaged base of volunteers

- Ensuring continuity of our synagogue community through responsible fiscal management

Hopefully, these phrases are familiar. They are Beth Shalom's mission and vision and they remain at the core of everything we do and the basis of our decision-making. I invite you to pause and reflect about how those phrases apply to your relationship with Beth Shalom.

I'd like to share some personal thoughts about this past year.

- Last summer, we joined two groups. Much like a marriage, we connected two families and integrated two cultures.

- We paid off the note on the current building, broke ground on our new Sacred Space, and moved water lines for the city of Overland Park. The foundation has been poured, walls will soon be going up, and we are slated to open the building in spring 2024. Again, thank you to the many generous donors with pledges of nearly \$15M that helped to make this happen.

- For those of you considering making gifts beyond brick and mortar, this is your opportunity to enhance future programming and engagement. Please reach out to Stef Williams, Rabbi Glickman, Gina Kaiser or Ron Coppaken who can help you make this happen.

- Our Education Director Civia White continues to enhance religious school activities, our Youth Director Ben Novorr works with our teens in programming, and Judy Jacks Berman continues to direct our successful Early Childhood Education program.

- We pray with traditional services in Gold-

smith Hall and the Lower Level Prayer Space, as well as musical Shabbat services Shir L'Shabbat (continuing our northern presence) and Tefillateinu. Torah Learning classes enhanced our Shabbat experiences, and we have Tot Shabbat and elementary school-age services. We daven with traditional tunes and we practice new melodies with Rising Song.

- Educational initiatives for adults will continue during the next year (think trope classes, both basic and advanced, Torah for Lunch, and Peltzman).

- The Northern Presence Committee is planning programs at locations around the metro. Look for more information as those events are finalized.

- Keep an eye out for family engagement opportunities, integrating Simchat Torah/Sukkot experiences, and Shabbat Around the World Dinners.

Thank you, Rabbi Glickman, Rabbi Padorr, and Hazzan Ben-Yehuda. Your leadership has guided us spiritually. Over the next year, Rabbi Kaplan will join to participate in all aspects of our collective synagogue life.

Thank you to Stef Williams, our executive director, for having such flexibility and a "can-do" attitude with everything at the synagogue.

I am grateful to all our loyal teachers, support staff, maintenance crew, and cemetery team. You help our congregants, our families, and our children in many ways, too numerous to list, and definitely appreciated. Much appreciation and gratitude to the Board of Directors, our committee chairs, and our loyal group of volunteer synagogue members that help with all kinds of tasks (here's just a few): scheduling and participating in Torah and Haftarah readings, attending minyanim, cooking and setting up Shabbat morning kiddush (with the Kiddush Corps), delivering challah to our new members, and filling mishloach manot bags. Our dedicated crew of volunteers also supports Lechem, Chesed, Membership, Building and Grounds, Administration, and other synagogue committees.

Of course, we're always recruiting for more helpers with manpower hours and financial costs for new challenges.

Thank you to the entire membership for being a part of our synagogue family. Cheers to what our future together will bring!



President Dr. Ann Karty speaks at the Annual Meeting on June 11, 2023.

### IN THIS ISSUE

- Annual Meeting Updates from the President
- Message from the Executive Director
- Sacred Space Building Update
- Youth & Family Update
- RFECEC Update
- PRS Update & Second Grade Torah Service Photos

*Please note,  
Congregation Beth Shalom  
offices will be closed on  
Tuesday, July 4  
in honor of  
Independence Day.*

# Building Update: On Time & On Budget!

BY GINA KAISER, SACRED SPACE  
BUILDING COMMITTEE CHAIR



The construction of the sanctuary and renovations to the existing building are on track for completion in spring 2024. The steel just went into the fabrication process and we hope to see the steel rising in July.

We are on budget for the construction. The budget contains a substantial amount of contingency dollars that we believe will be sufficient, but we will probably spend all the contingency funds. Those of you who have built anything know that changes occur once the actual construction is underway, and those changes are always cost increases, not decreases.

To date, we have raised almost \$15M. We were able to accomplish this goal because of

the generosity of numerous donors, some of whom made multiple substantial pledges.

Many of you will recall that we had significant cost increases as a result of Covid and the resulting supply chain issues—increases of almost 25%. What that means for us is that the money we had for the endowment to cover increased operating expenses has to go to bricks and mortar. That shortfall is \$1.5M.

In order to be fiscally responsible and not saddle future generations with a financial burden, we have a plan to raise this additional money. Some congregants will receive personal calls and visits from us, but we cannot personally reach everyone.

Therefore, I ask you to think about a generous pledge—or an additional pledge—one that is meaningful according to your financial means. You can pay it over a period of years, and it can be in cash, stock, or an IRA distribution, just to name a few payment methods. We need everyone to participate. This is YOUR synagogue; all of you, at some time, will attend services in the new sanctuary, or hold a lifecycle event there. Please think seriously about giving or giving again, and contact Stef Williams ([swilliams@bethshalomkc.org](mailto:swilliams@bethshalomkc.org)) Ron Coppaken ([roncoppaken@aol.com](mailto:roncoppaken@aol.com)), Rabbi Glickman ([dglickman@bethshalomkc.org](mailto:dglickman@bethshalomkc.org)) or me ([gkaiser447@gmail.com](mailto:gkaiser447@gmail.com)).

## MINYANAIRE OF THE MONTH: BERNIE FRIED

"I have been attending morning minyan occasionally since 2009, and daily six days a week since 2013, when my mother passed. There were days when we did not have 10 attendees, and we made phone calls to try to round up the one or two we needed. It was then I realized the importance of supporting all those who, like me, need a minyan to say Kaddish or yahrtzeit in their time of need. My synagogue family was here for me when I needed them, and I promised myself I would always be there to support them."



**jfs KC** | Mental Health Programs

## Community Conversations

### Aging Parents

A workshop to educate and support adult children on how to prepare for and assist parents entering the next stage of life.

Learn the steps to prepare for the transition of assisting your parents. Ensure everyone feels supported, protected and educated. Get strategies to make this transition easier and learn the various options available.

Hear from experts in: Older Care Management, Legal, and Therapeutic.

**Tuesday, July 11th**

**6:30PM - 8PM**

**at the J KC**

For more information, please contact

JFS Mental Health Programs [jperlmutter@jfskc.org](mailto:jperlmutter@jfskc.org) 913 327-8259





# Remembering an Exciting Year for KCUSY at Beth Shalom

BY BEN NOVORR, YOUTH & FAMILY PROGRAMMING DIRECTOR

It's been a busy year for KCUSY, and we wanted to share a brief overview of what this year had to offer for our teens:

- Weekly lounge nights for our 9th-12th graders
- S'mores and Sloach (slow ruach) including the creation of an official KCUSY songbook
- Kadima (6th-8th grade) bowling party
- Harvest and Havdalah in the Mitzvah Garden with NCSY and BBYO
- Huge Simchat Torah birthday bash
- Space-themed night with space snacks, glow in the dark crafts, and a Star Wars viewing party
- 17 teens attending Fall Kinnus in Minnesota which included a trip to Mall of America
- Ice Skating at Chicken N Pickle
- 6 teens attending Winter Shabbaton in St. Louis, including a visit to City Museum and delivering donations to a homeless shelter
- Gesher Kinnus hosted here in Kansas City, attended by nearly 60 middle schoolers from across the region
- "Make Your Own Pizza Night" and evening at Main Event with a group of vis-

iting Israeli teens, BBYO, NCSY, and HBHA!

- Kadima potluck and game night in the youth lounge
- Two KCUSYers, Ellie Glickman and Nina McNay, were elected to the EMTZA Regional Board
- 28 teens from KCUSY attended Spring Kallah in Ogden, Iowa, the most of any chapter!
- Hosted a "Dog Night," where teens brought their dogs to play while we enjoyed ice cream
- Attended the HBHA school play "Radium Girls," which featured tons of Beth Shalom teens
- Hosted an end-of-the-year Karaoke Night with a dessert bar

We've already started planning tons of exciting programs and events for next year, so please keep an eye out, as you will start seeing announcements very soon!

Thank you to all of you, who have been such fantastic supporters of KCUSY programming! We truly would not be able to provide such an extensive array of experiences to our teens if it weren't for you!

Have a wonderful summer!

# Wrapping Up A Joyful Year at Rose Family Education Center

BY JUDY JACKS BERMAN, EARLY CHILDHOOD EDUCATION DIRECTOR

We have had such a wonderful 2022-2023 school year! Our children learned about all the Jewish holidays and weekly Shabbat. The students loved celebrating the end of each week with Shabbat and a Shabbat party, then starting Monday morning with Havdalah!

Our children learned Jewish values as well as the parshat of the week. They learned how to count in Hebrew, their colors and body parts in Hebrew as well as many prayers, vocabulary and lots of Hebrew songs. We enjoyed puppet shows, juggling and mime shows, concerts, farm animals as well as visits from exotic animals.

On top of daily art projects, lots of cooking, hundreds of stories read, and songs sung, it's been an amazingly busy wonderful year.

Every Friday before lighting candles, the children gave tzedakah. At the end of the year, the children voted on where to do-

nate their \$400. They wanted half of their money to go to the Jewish Family Services' Pantry and half to Wayside Waifs.

As I begin my 30th year at Beth Shalom Rose Family Early Childhood Education Center, I would like to share many of the joys I have gotten from this incredible job! The thousands of smiles, high-fives and hugs have filled my heart for all these years! Seeing so many of my former kids as youth group leaders, leaders in the Jewish community and now parents themselves has been so gratifying and joyous for me! I am so blessed to have a job that I have loved coming to every day! The faculty and parent body are incredible to work with and share my life with. Everyone should be this lucky to have a job they love!

I am looking forward to a great 2023-2024 school year! Happy Summer!

## Now Accepting Simcha Reservations for Our New Sanctuary



Image: Digital rendering of the new sanctuary from Preston Scott Cohen, Inc.

Our beautiful new building will be reality before we know it. The Beth Shalom office is now accepting simcha reservations through 2028 for your weddings, anniversaries, b'nei mitzvahs, and other simcha lifecycle events. The new sanctuary will be able to hold up to 500 guests, and kosher catering can be arranged. The calendar is already filling up, so don't delay in getting your simcha booked. **Contact Executive Director Stefanie Mislser Williams at [swilliams@bethshalomkc.org](mailto:swilliams@bethshalomkc.org) to discuss your event needs.**



## Ben Novorr Visits Israel

Beth Shalom's Youth & Family Programming Director Ben Novorr recently co-led a Birthright trip to Israel. In late July, Ben will be visiting Camp Herzl and Camp Ramah, both in Wisconsin, to spend time with Beth Shalom campers. Safe travels!





# Ending the School Year PRS-Style!

BY CIVIA WHITE, YOUTH & FAMILY EDUCATION DIRECTOR

Mazel Tov to all of the students and teachers on the completion of the school year. Right up to the very last day, PRS was buzzing with activity.

Our second graders presented a Torah Service! They wore tallitot they made and read from a scroll that they had added to each week. It was awesome to be in the room with so many supportive parents and Jamie Katz, our amazing second grade teacher. The children decorated cookies and celebrated the occasion with the entire school at our end of the school year party. Well done!

The sixth graders and their parents worked together to attach tzitzit to the tallitot that the class made in Jewish Art with Beth Albee. The families enjoyed working together on a Jewish ritual item; I can't wait to see the kids wearing their creations next school year.

PRS will miss the Albee family! We presented them with a

Mezuzah from the Sisterhood gift shop and know that they will think of us when they come and go from their new home in Georgia. Beth's final project with the school is on permanent display at the top of the steps to the school. Each child was asked to write and illustrate an 11th Commandment. Please stop by and take a look at these beautiful and insightful creations. PRS kids understand the importance of Jewish values in everyday life. We are so proud of them!

Interested in getting an early start at PRS? Next school year there will be a Pre-K class one Sunday a month. It will run from 9:30 am to 12:00 pm. Art projects, Torah stories, Hebrew songs, and learning Jewish values are central to the curriculum for this pilot program. Registration is now open for Pre-K, and all classes, for PRS 2023-24 at this website: <https://bit.ly/3VIftWM>



**Registration for PRS 2023-24 is now open!**  
**Jewish Education for Pre-K through 10th grade**  
**Visit [bit.ly/3VIftWM](https://bit.ly/3VIftWM) or scan QR code to sign up.**





# UPCOMING EXPERIENCES AT CONGREGATION BETH SHALOM



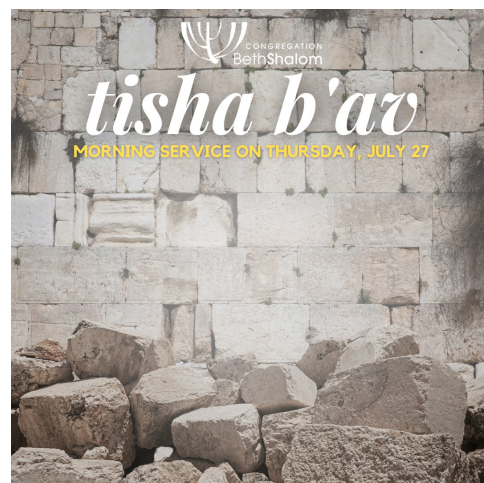
## Shir L'Shabbat Musical Service

Saturday, July 8 at Asbury Methodist  
Join us for this joyful musical Shabbat service led by Rabbi Beryl Padorr.



## Erev Tisha B'Av Community Event

Wednesday, July 26 at 9:30 pm  
Location TBD



## Tisha B'Av Morning Service

Thursday, July 27 at 7 am in Goldsmith Hall  
Join us for Morning Minyan followed by the reading of Eicha (Lamentations).

## What Jews Do: We Show Up

BY STEFANIE MISLER WILLIAMS, EXECUTIVE DIRECTOR

The past few weeks have been intense. We have had to say goodbye to several beloved friends and congregants. We attended funerals and shiva minyanim. We did what we, as Jews, do. We show up. Showing up means so many different things. Yes, it can simply mean we actually physically show up. But we can show up in so many other ways. We bring food (way too much). We send countless texts and leave so many messages. We look for ways to help. We try to be there for the mourners in any way we can and in whichever way they may need. We hug a little longer and a little tighter. We try to take a little bit of their grief and make it our own. Anything we can do to alleviate any of their pain. Not just because it hurts us to see them hurting, but because it is what we do – it is a part of our tradition. We show up.

My own children have stood by their friends at shiva minyanim from a very young age. They understand that this is what we do. When my dear friend recently lost her father, it was important to Amos that he come with me to shiva. He will become a bar mitzvah in a year, yet he already gets the significance of showing up. Ayla planned to go with me to my friend's house on Shabbat and help make a minyan so they could say Kaddish. A bunch of her friends came to our house right before we left, but there was never a question that she was going to show up.

When we found out they needed another person to make the minyan, one of Ayla's friends was happy to join us. The person leading the teaching that evening spoke to them and focused on the importance of b'nei mitzvah. The importance of what they did. They showed up. They didn't know my friend's dad. They barely knew anyone in the room. But they knew that this is what we do. We show up.

And so, I have been a bit emotional. Between feeling all the loss and holding back tears... but also feeling the pride. Feeling the connection to Jewish people everywhere. Discussing with my friends how even in difficult times, we see the ways our tradition keeps pulling us together. Showing us the light, even through the darkness. The way our tradition guides us time and time again.

And, a few days later, I got the full circle moment. One of my old students, a former USYer, became a father to his son and I got to show up. I was lucky enough to celebrate at a brit milah. I got to witness another one of our amazing traditions. To share in the simcha of something so extraordinarily special. Again, we hugged a little longer and a little tighter. This time the tears were filled with dreams of what is yet to come. I felt the joy and the pride – because our tradition has always encouraged me to show up.

## COMMUNITY CONVERSION PROGRAM NOW ENROLLING

Do you know someone considering conversion to Judaism and seeking a comfortable forum to learn more about the fundamentals of Jewish thought and practice? Interested candidates are asked to contact the Rabbinical Association to learn how they can register to participate in this year's community-wide course "Judaism for Conversion Candidates" which begins August 17.

The comprehensive year-long course is designed for adults and taught on a rotating basis by rabbis from the Reform, Conservative, Orthodox, and non-denominational movements.

To register, contact Annette Fish at [afprogram@aol.com](mailto:afprogram@aol.com) or 913-327-8226.



# TODAH RABBAH!

# תודה רבה

Contributions through June 14 are listed below. Thank you for thinking of us.

## BETH SHALOM GENERAL FUND

*In Appreciation of*  
G-d, Congregation  
Beth Shalom, and  
my supportive  
family

Hannah Silverman

*In Memory of*

Nathan Baraban  
Diane More

*In Memory of*

David Berey  
Barbara & Stephen  
Abend

*In Memory of*

Moses Berger  
Arthur & Margaret  
Berger

*In Memory of*

Max & Sadie  
Clemensberg  
Marietta Dunn

*In Memory of*

Celia Cohen  
Steven Cohen

*In Memory of*

Gertrude Epstein  
Debra & Michael  
Faigen

Brian & Roberta  
Miller

*In Memory of*

Timothy Wilson  
Finnegan

Stuart & Sharon Pase

*In Memory of*

Max Fox  
Geraldine Goldberg

*In Memory of*

Ella Glazer  
Paulette & William  
Ramm

*In Memory of*

Jack S. Glazer  
Paulette & William  
Ramm

*In Memory of*

Betty Goldstein  
Stuart & Sharon Pase  
Jonathan & Ellen  
Chilton

*In Memory of*

Sybil Kahn  
Hanan & Natalie  
Hammer  
Jennifer Schmidt

*In Memory of*

Harold Klopfer  
Barbara Cosner  
Elliott & Katharine  
Hollub

*In Memory of*

Jennie Lazarus  
Stephen & Rebecca  
Levine

*In Memory of*

Michael Milens  
Barbara Cosner

*In Memory of*

Adolph Stern  
Reuben & Mary Jane  
Stern

*In Memory of*

Fannie Stolov  
Ronald Schiffman &  
Sheila Stolov

*In Memory of*

Gary Lee Tabolsky  
Rochelle Bell

*In Memory of*

Celia Ziegelman  
Steven Cohen

*In Memory of*

Shlomo Gerson  
Ziegelman

Steven Cohen

*In Memory of*

Max Zurovsky  
Debra & Michael  
Faigen

Brian & Roberta  
Miller

## BEVERLY & HARVEY BODKER ENDOWMENT FUND

*In Memory of*

Sam Bodker  
Betsy Bodker

*In Memory of*

Ira Friedson  
Betsy Bodker

## BUILDING FUND

*In Memory of*

Leonard Enslein  
Jerald Enslein &  
Hannah Harris

*In Memory of*

Betty Goldstein  
Jeffrey & Carol Katz  
Ronald & Harryette  
Cooperman

*In Memory of*

Sybil Kahn  
Deborah Finkelstein

## CEMETERY MAINTENANCE FUND

*In Memory of*

Anna Ace  
Harry & Hedra  
Merson

*In Memory of*

Sally Ace Glass  
Harry & Hedra  
Merson

*In Memory of*

Betty Goldstein  
Howard & Lisa  
Feingold

## FRANK SCHLOZMAN SCHOLARSHIP FUND

*In Memory of*

Irene Malyn  
Michael & Wendy  
Malyn

*In Memory of*

Frances Schlozman  
Michael & Wendy  
Malyn

*In Memory of*

Bessie Sokolov  
Michael & Wendy  
Malyn

## GERSHON HADAS SCHOLARSHIP FUND

*In Memory of*

Anne Hadas  
Hedva Glickenhau

*In Memory of*

Fannie Rosenbloom  
Michael & Hue Tran  
Green

## HARRY & ANITA DANIELS CAMP RAMAH SCHOLARSHIP FUND

*In Memory of*

Harry Daniels  
Robert & Cindy  
Daniels

## HAZZAN BEN-YEHUDA'S DISCRETIONARY FUND

*In Appreciation of*

Hazzan Tahl  
Ben-Yehuda  
Byron & Gerri  
Ginsburg  
Steven & Lori  
Greenberg  
Deborah Rosenberg

*In Honor of*

Rabbi Scott &  
Civia White son's  
wedding

Hanan Steinzeig &  
Rita Brown

*In Memory of*

David Berey  
Stephen Feinstein &  
Eileen Cohen

*In Memory of*

Marjorie Brodtkin  
Hanan Steinzeig &  
Rita Brown

*For the speedy*

*recovery of*  
Scott Bronston's  
brother

Hanan Steinzeig &  
Rita Brown

## KCUSY FUND

*In Memory of*

Sybil Kahn  
John Goldberg &  
Marla Brockman

## MARCIA EVELOFF LECHEM FUND

*In Memory of*

Sybil Kahn  
Harold Kaseff  
& Rhea Salasche

*In Memory of*

William Abramson  
Robert & Cindy  
Daniels

*In Memory of*

Norman Bresel  
Kenneth & Sandra  
Lerner

*In Memory of*

Betty Goldstein  
Robert & Cindy  
Daniels

*In Memory of*

Estelle Grundstein  
Kenneth & Sandra  
Lerner

*In Memory of*

Harold Klopfer  
Kenneth & Sandra  
Lerner

*In Memory of*

Michael Milens  
Kenneth & Sandra  
Lerner

## MERNA & SYLVAN SIEGLER FUND FOR JEWISH CAMPING

*In Memory of*

Sam Agron  
Merna Siegler

*In Memory of*

Sybil Kahn  
Merna Siegler

*In Memory of*

Dr. Irwin Waxman  
Merna Siegler

## MORRIS & ROSE WEINBERG FUND FOR CAMP SHABBAT

*In Memory of*

Marjorie Brodtkin  
Stephen Weinberg

## MT. CARMEL TRUST

*In Memory of*

Rabbi Solomon  
Rosenberg  
Deborah Rosenberg

## OHEV SHOLOM- DENTON PRAYERBOOK & RELIGIOUS ITEMS FUND

*In Memory of*

Jacob Leon Turetsky  
Sheldon & Joan  
Turetsky

*In Memory of*

Dr. Irwin Waxman  
Sheldon & Joan  
Turetsky

*In Memory of*

Ruben & Jenny  
Weinhouse  
Sheldon & Joan  
Turetsky

## OHEV SHOLOM- ENID/SHALOM OFFENBACH FUND IN SUPPORT OF PASSPORT TO ISRAEL

*In Memory of*

Marjorie Brodtkin  
Mark Litchman

*In Memory of*

Sybil Kahn  
Mark Litchman

*In Memory of*

Frank Litchman  
Mark Litchman

## OHEV SHOLOM- LEGACY & HERITAGE FUND

*In Memory of*

Anne Kaplan  
Mark & Trudy Slatkin

## POLSKY RELIGIOUS SCHOOL FUND

*In Memory of*

Tami Yavitz  
Deborah Rosenberg



# TODAH RABBAH!

# תודה רבה

Contributions through June 14 are listed below. Thank you for thinking of us.

## RABBI GLICKMAN'S DISCRETIONARY FUND

### *In Appreciation of*

Rabbi David Glickman  
Byron & Gerri Ginsburg  
Steven & Lori Greenberg  
Norman Kahn Jr. & Diana Winyard  
Samyra Marks  
David & Lynne Bock

### *In Honor of*

Andy Reiz's 103rd birthday!  
David Feingold & Trudi Galblum and your nieces & nephews: Anita, Bari, David, Buzzah, & Micah

### *In Honor of*

Jeremiah Wajcman on becoming bar mitzvah

Deborah Rosenberg

### *In Memory of*

Mike Milens  
Karen Leeds

## ROSE FAMILY EARLY CHILDHOOD EDUCATION CENTER

### *In Memory of*

Marc Hurwich  
Estelle Berman

### *In Memory of*

Marlene Hurwich  
Estelle Berman

### *In Memory of*

Sybil Kahn  
Jeffrey & Corrine Blackman

### *In Memory of*

Stanley Katz  
Marlene Katz

### *In Memory of*

Melvin Raskin  
Sandra Raskin

### *In Memory of*

Edith Rose  
Estelle Berman

## SAM & ESTHER DANIELS PRAYER BOOK FUND

### *In Memory of*

Sam Daniels  
Robert & Cindy Daniels

## SHIR L'SHABBAT

### *In Memory of*

Dr. Irwin Waxman  
Lois Clayman & Marcia Fagin

## SIDNEY GINSBURG ENDOWMENT FUND

### *In Memory of*

Sam Agron  
Marilyn Cohen

## TOT SHABBAT FUND

### *In Memory of*

Sara Rosenberg  
Deborah Rosenberg

# Mazel Tov to Our July Anniversaries

Sponsor a kiddush luncheon by contacting Melisa at 913-647-7281 or [ritualassistant@bethshalomkc.org](mailto:ritualassistant@bethshalomkc.org).

DAY	YEARS	DAY	YEARS
1 Joel & Jean Bratt . . . . .	39	10 Jonathan & Shira Hurst-Sneh . . . . .	12
1 David & Erica Bush. . . . .	33	10 Mike & Naomi Silverman . . . . .	58
1 Andrew & Amy Nemiccolo . . . . .	22	11 Robert & Elissa Goodman . . . . .	47
1 Kevin & Debra Jones . . . . .	16	11 Rita Cortés & Mary McLean. . . . .	15
1 Dr. Allan & Nancy Reichman . . . . .	50	12 Edward & Cheryl Alexander . . . . .	42
2 Jeffrey & Wendy Sitzmann. . . . .	34	14 David & Rebecca Parker . . . . .	16
2 Steven & Beatrice Fine . . . . .	23	15 Stuart & Sharon Pase . . . . .	50
2 Samuel & Deborah Schanker . . . . .	28	15 Bernard & Barbara Birnbaum . . . . .	72
3 Robert & Lori Kanoff . . . . .	18	16 Scott & Lori Myron . . . . .	17
3 Daniel & Jeannie Hodes. . . . .	18	17 Howard & Lorri Coppaken . . . . .	8
3 Peter & Sarah Beren . . . . .	29	18 Trevor & Katie Gerson . . . . .	14
3 Ben & Elena Heisler . . . . .	6	19 Dr. Ben & Debra Rubin. . . . .	64
4 Ariel & Robin Axelrod . . . . .	17	21 Andrea & Susan Elyachar . . . . .	15
4 Matthew & Karen Davis . . . . .	24	23 Sheldon & Jackie Fleschman . . . . .	56
4 Michael & Megan Kricsfeld . . . . .	13	24 Dr. David & Lynne Bock . . . . .	40
5 Ed & Amy Tranin . . . . .	36	25 Regev & Anne Alon . . . . .	24
6 Ronald & Denise Coppaken . . . . .	49	25 Amy & Cary Herren . . . . .	26
6 Nikolay & Svetlana Danilov . . . . .	49	27 Michael & Beth Liss . . . . .	21
8 Michael & Rebecca Braverman . . . . .	39	27 Joel & Beverly Levine . . . . .	48
8 Stanley & Norine Rosenblum . . . . .	44	28 Ken & Karen Liebenau. . . . .	32
8 Robert & Rene Dresnick . . . . .	39	28 Robert & Jean Zeldin . . . . .	54
9 Randal & Meg Adler. . . . .	34	29 Raphael & Natalie Taylor . . . . .	17
9 Edward & Magda Haber . . . . .	63	30 Stephen & Barb Stras . . . . .	51
9 Jeffrey & Mindy Rosenberg . . . . .	29	31 Dr. Jonathan & Ellen Chilton . . . . .	46





# Mazel Tov to Our 2023-2024 Board!

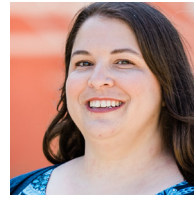
## Officers & Chairs



**DR. ANN KARTY**  
*President*



**VICTOR WISHNA**  
*Executive Vice President*



**JANNA ROSENTHAL**  
*VP Engagement & Programming*



**ERIC SCHULTZ**  
*VP Ritual*



**MIKE KOLB**  
*VP Education*



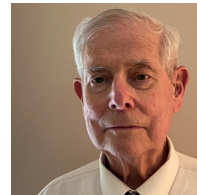
**ADAM MATSIL**  
*Treasurer*



**DEBBIE SOSLAND-EDELMAN**  
*Secretary*



**JASON KRAKOW**  
*Past President*



**MIKE SILVERMAN**  
*Past President*



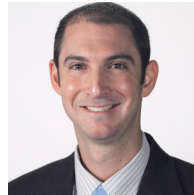
**JILL GOLDSTEIN**  
*Sisterhood President*



**AMY SCHULTZ**  
*Ritual Co-Chair*



**MARI ANNE BIRNBAUM**  
*Membership Chair*



**JEREMY ANTES**  
*Building & Grounds Chair*



**STACI KAHN**  
*Education Chair*

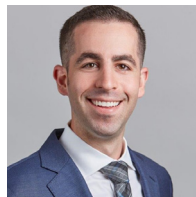


**ADAM MILLER**  
*Administrative Chair*

## Board of Directors



**RENANA ABRAMS**  
*Member at Large*



**SAM BARRER**  
*Member at Large*



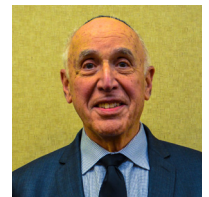
**AARON BERGER**  
*Member at Large*



**LOUIS COHN**  
*Member at Large*



**SAM DEUTCH**  
*Member at Large*



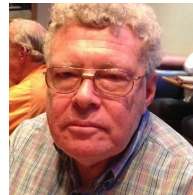
**HAROLD KASEFF**  
*Member at Large*



**RANDY KATCHER**  
*Member at Large*



**NEIL MILLER**  
*Member at Large*



**PETER NEWMAN**  
*Member at Large*



**DAN OSMAN**  
*Member at Large*



**ERIC POE**  
*Member at Large*



**JULYE ROSE**  
*Member at Large*



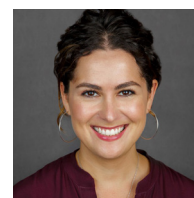
**MILES ROSS**  
*Member at Large*



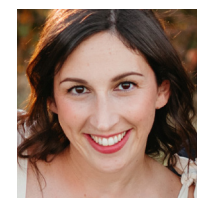
**HEATHER SCHLOZMAN**  
*Member at Large*



**LISA SKOLNICK**  
*Member at Large*



**ILANA CHILTON**  
*New Member*



**LAUREN AZORSKY LEVY**  
*New Member*



**BRUCE SILVERMAN**  
*New Member*





# BARUCH DAYAN HAEMET

PLAQUES HAVE BEEN DEDICATED *In Memory Of...*

YAHRTZEITS Join us for morning or evening minyan to say Kaddish for your loved one. Check our website for service schedule.

# ברוך דין האמת

Praised is the True Judge

## JUL 1-12 TAMUZ

Harry Blatt  
Harry Nathan  
Brown  
Walter Drew  
Della Glass  
Sol Kopitnik  
Ben Pateck  
Tillie Pelofsky  
Nehamah Plotsky  
Hannah Rock  
Jacob Rosenblum  
Wilbur Tigerman  
Simon Wolfberg

## JUL 2-13 TAMUZ

Leonard Bayzman  
Bessie Cortez  
Alice Friedman  
Sam Friedman  
Anna Moskovitz  
Glaser  
Abe Gutovitz  
Samuel Kalinsky  
Jacob Max Kanter  
Nellie Klein  
Fannie Krashin  
Golda Rosen  
Warren Siegel

## JUL 3-14 TAMUZ

Nina Lee Apple  
Max Bergmann  
Rose Bramson  
Sarah Dubinsky  
Morris Galler  
Joseph C. Glaser  
Meyer P. Gottlieb  
Ruth Hyman  
David Jacobson  
Abe Katz  
Max Kopin  
Sol E. Lapin  
Theodora Riva  
Oshiver  
Sadie Remer  
Menahem Mendel  
Roslawowski  
Nettie Stone

## JUL 4-15 TAMUZ

Edith Agron  
Dora Blackman  
Fanni Epstein  
Bess Gale  
Pearl Herowitz  
Stephen Hershman  
Meyer Pachter  
Fanny Puritz  
Libby Rittmaster  
Bertha Rogovain  
Herman Samuel  
Rose  
Phillip Rositzky  
Irving Rubenstein  
Phineas Schwartz  
Alter Shankman  
Harriet Lee  
Sherman  
Henrietta Silverforb  
Sarah R. Wienstein  
Paul (Pete) Winett

## JUL 5-16 TAMUZ

Rose Alisky  
Joel Blackman

Lena Bloom  
Dorothy Copaken  
William Freiden  
Ray Friedman  
Tillie Horwitz  
Anna Karol  
Gussie Kort  
Saul Kumin  
Anna Marks  
Jacob Pilz  
Mary Rosenberg  
Naomi Rutlader  
Max Spitzcaufsky  
Rose Zurovsky

## JUL 6-17 TAMUZ

Elishu Bayless  
Myer Cohen  
Ethel Eisen  
Herman Greenstein  
Carl Hipsh  
James Kunellis  
Alexander F. Muller  
Joanne Pack  
Etha Sarah Walsky

## JUL 7-18 TAMUZ

Al Abrams  
Esther Bernstein  
Morris Bodker  
Kalman M. Brand  
Rae Hadas Broun  
Rebecca Rose  
Droher  
Joseph Feingold  
Stanley Goldberg  
Rebecca Hershman  
Albert Korf  
Bernice Peltzman  
William Pesman  
Simon Rope  
Irving Saskin  
Ida Schlosberg  
David N. Sosland

## JUL 8-19 TAMUZ

Marie Bernstein  
Esther Blasbalg  
Paul "Pete" Cohn  
Pauline Cohn  
Lillian Hochberg  
Sonia Laner  
Beatrice B. Mindell  
Abraham Prussack  
Rosa Sosland  
Dora Stern  
Samuel David  
Westerman  
Ruth B. Yukon

## JUL 9-20 TAMUZ

Tzeitel Feinberg  
Bertha Glatt  
Bernard Kantor  
Sharlene Kantor  
Louis Klein  
Michael Harry  
Panich  
Goldie Rosenthal  
Inge Silverman  
Herman R. Tonkin  
Judith Ann  
Weinberg  
Henry Stanley  
Zwern

## JUL 10-21 TAMUZ

Gary S. Bitner  
Elsie Boolkin  
Herbert Feder  
Sadie Gordon  
Fannie Greenstein  
Toby Herowitz  
Marian Shapiro  
Abraham Smith  
Robert R. Tonkens  
Davida  
Trochtenberg  
Marvin Edward Zeff

## JUL 11-22 TAMUZ

Evelyn Bendersky  
Herman Berman  
Elizabeth Bohm  
Samuel Brown  
Arnold Coppaken  
Nathan Fradin  
Harry Gross  
Morton Leon Hurst  
I. Pete Pesmen  
Joseph J. Plotsky

## JUL 12-23 TAMUZ

Sidney Bender  
Elaine R. Brown  
Rosalie Ezralovitz  
Elizabeth Ginsberg  
Al Jacobs  
Frieda Kanter  
Louis Katz  
Ethel G. Pack  
Bernice Peltzman  
Sam Schwartz  
Heda Segal  
Jake Shabason  
Phillip Spector  
Dorothy R. Stoup  
Isadore Stoup  
Anna Tempofsky  
Abe Trillin

## JUL 13-24 TAMUZ

Jennie Cohn  
Lewis David  
Fingersh  
Joseph Kaufman  
Fannie Mae  
Sosland Marder  
Sidney Pakula  
Louis J. Pelofsky  
Mollie Zeff

## JUL 14-25 TAMUZ

Clementine  
Blumenthal  
Esther Fox  
Bushman  
Bessie Cheifetz  
Fayge Malkeh  
Cinnamon  
Michael Lynn  
Goodman  
Sadie Hoffman  
Lina Neustein  
Jennie Okonowsky  
William P. Orlove  
Anna Passman

Diana P. Silverman  
Samuel Taylor  
Adele Walker  
Joseph Zwillenberg

## JUL 15-26 TAMUZ

Abe Bess  
Susan René  
Birnbaum  
Joe Bormaster  
David M. Chambers  
Fredie Epstein  
Marcia Eveloff  
Sanford Goldansky  
Morris Kanter  
Isadore Morris  
Marion Rosen  
Aaron Turock  
Elias Wolarsky

## JUL 16-27 TAMUZ

Rebecca Block  
Dobeh Gurtovnick  
Mary Cohen Jedel  
Samuel N.  
Josephson  
Milo Minkin  
Morris Morgan  
David Overbeck  
Lena Peltzie Present  
Liba Miriam bat  
Reb Shmuel ha  
Kohen  
Leopold Shopmaker  
Sarah Wengrover

## JUL 17-28 TAMUZ

Fanny Alexander  
Lipman Goldman  
Molly Goodman  
Frank Kaple  
Helen Lefkowitz  
Mildred Mardiks  
Seymour Nathan  
Salvay  
Elizabeth (Betty)  
Waldman  
Bennett H. Walzer  
Samuel Weinberg

## JUL 18-29 TAMUZ

Isidore Bernstein  
Samuel Brodtkin  
Louis Y. Chernikoff  
Morris A. Friedman  
Milton M. Gordon  
Earl Jacobson  
Rebecca Katcher  
Pearl Mann  
William Marcuwitz  
Herman Millman  
Bessie Rothberg  
Max Rubin  
David Smolinsky  
Rosa Solomon  
Cyrus Spungen  
Dr. Herbert J. Winer  
Lillian Yeddis  
Gerald Yukon

## JUL 19-1 AV

Dorothy R. Botwin  
Manuel Goodman

Jacob J. Greenstein  
Gittel Hadas  
Betty Benjamin  
Heymann  
Birdie Josephson  
Retha D. Lisman  
Gertrude Pasmanik  
Jacob Selichonok  
Minnie Werby

## JUL 20-2 AV

Morris Boolkin  
Simon Choikhit  
Helen Cohn  
Luba Dean  
Leon Gelpman  
Dorothy Dunn  
Glober  
Dora Hellman  
Jane Anne Klaiher  
Edward C. Lefkovits  
Sarah Moskowit  
Benjamin Schoen  
Harold Waxman

## JUL 21-3 AV

Saul Brams  
Sammy Devins  
Sidney B. Devins  
Rebecca Eisen  
Isadore H.  
Fleschman  
Aileen Forman  
Minnie L. Garfinkle  
Harry Ginsberg  
Rose Keen  
Isie Krockover  
Abraham Rogers  
Meyer Rosenberg  
Bernard Seiden  
Ernest Spector

## JUL 22-4 AV

Sadie Bell  
Ann Goller Elick  
Phillip Feingold  
Bernard Greenberg  
Fannie Lerner  
Ben Mallin  
Edith Mendy  
Bronia  
Roslawowski  
Harry Turock

## JUL 23-5 AV

Rachel  
Bloomgarten  
Don Herbert  
Finestone  
Sadie Gumowitz  
Idy (Ida) Mae  
Hurwitz  
Rachel Turk Hurwitz  
David Kanter  
Freda Lipsitz  
Bertha Mallin  
Carl Minkin  
Jacob Poizner  
Phillip Samuelson  
Charles Schoen

## JUL 24-6 AV

Bessie Abramson  
Morris L. Bigus  
Pearl Brown  
Anna Cohen  
Samuel E. Dunn  
Rose Gastman  
Samuel A. Katz  
Jacob Kopperman  
Leo J. Levinson  
Bela Lipszyc  
Anna Naron  
Sam Rosga  
Morris Schoen  
Alvin Shapiro  
Geraldine (Gerry)  
Sivers  
Abraham Vinick  
Sarah R. Weinstein  
Sarah Wolfberg

## JUL 25-7 AV

Barry L. Aronson  
Joseph E.  
Chambers  
Harvey Cohen  
Gussie Kaufman  
Samuel Kaufman  
Lynn Kisluk  
Betty Ann Koralchik  
Herman Labowitz  
Reltz Lenet  
Morris J. Levin  
Anna Dora  
Peltzman  
Haim Yehudah Reb  
Shmuel ha Kohen  
Sam Samberg  
Jacob Siegelbaum  
Dora Walker

## JUL 26-8 AV

Fannie Eisen  
Barney Gershon  
Naomi Goldstein  
Nathan Keen  
Morris Rapschutz  
Abraham Robinson  
Sarah Rocher  
Fannie Shapiro

## JUL 27-9 AV

Alvin Arenson  
Allan Birman  
Betty Birman  
Bessie Bordman  
Mary Chernikoff  
Mordecai Crosner  
Rosa Crosner  
Barbara Enslein  
Israel (Izzy)  
Friedman  
Rebecca Rachel  
Furman  
Bessie Goldberg  
Jennie Himmel  
Anna Hoffman  
Henshen Keller  
David Leibtag

Emma Loeffler  
Siegfried Loeffler  
William Peltzman  
Mitchel Rose  
Anna Tempofsky  
Pauline Yaskolka

## JUL 28-10 AV

Melvin Ellis Beyer  
Sarah Golding  
Neil F. Miller  
Jennie Millman  
Mendel Oshry  
Clara Rothblatt  
Esther Shapiro

## JUL 29-11 AV

Alfred Aron  
Morris Balot  
Ida Baron  
Barney Cinnamon  
Abraham Cohen  
Sophia Cohn  
Rae Dloogoff  
Jacob Goldstein  
Hilda Handel  
Ida Z. Joseph  
Richard L.  
Josephson  
Louis Kiansky  
Esther Lesser  
Charlotte S.  
Margolin  
Meyer Peltzman  
Sarah Scrinopskie  
Ethel Seider  
Katie Solsky  
Philip Wang

## JUL 30-12 AV

Toby Chemel  
Ida Frank  
Dorothy Glass  
Dora Gold  
Nathan S. Goldberg  
Serena Hammer  
Anna Horowitz  
Samuel Isaak  
Phillip Katz  
Hyman J. Levi  
Hyman Rosen  
Ben Solomon

## JUL 31-13 AV

Rebecca Barash  
Bessie Brenner  
Samuel J. Brown  
Sigmund Dollman  
Pearl Gorelick  
Rose Gould  
Jack Kahn  
Harry Levy  
Jennie Marks  
Isaac Sackin  
Harris Segelbohm  
Samuel Spector  
Ruth Unger  
Evelyn Yodler

**Unveiling Announcement: Dorothy Katcher**  
**Sunday, August 6 at 10:30 am**  
**at Sheffield Cemetery**

David M. Glickman

Senior Rabbi

Beryl Padorr

Associate Rabbi

Tahl Ben-Yehuda

Hazzan

Stefanie Misler Williams

Executive Director

Judy Jacks Berman

Director, RFECEC

Civia White

Director, PRS

Ben Novorr

Director, Youth & Family  
Programming

Dr. Ann Karty

President

Alan L. Cohen

Rabbi Emeritus

The Congregation Beth Shalom Scroll  
(USPS531-420) is published monthly  
by Congregation Beth Shalom,  
14200 Lamar Avenue,  
Overland Park, KS 66223.

Annual Subscription \$24.00. Periodical  
Postage Paid in Kansas City, MO.

**DATED MATERIAL**

**POSTMASTER:** Send address changes to  
CONGREGATION BETH SHALOM SCROLL,  
14200 Lamar Avenue,  
Overland Park, KS 66223.

*Congregation Beth Shalom, an egalitarian Conservative synagogue,  
is a welcoming community of individuals from diverse backgrounds,  
strengthening connections with God, Torah and the Jewish people  
through communal commitment to prayer, study and acts of loving kindness.  
Jewish Living Experiences from the new, blended community of Beth  
Shalom and the former Ohev Sholom.*

## Introducing

### PRS Pre-K

Sundays at Congregation Beth Shalom

Sundays Once A Month from 9:30 am to Noon

#### PROGRAM FEATURES :

- ✓ Jewish Holidays
- ✓ Jewish Values
- ✓ Spoken Hebrew
- ✓ Music
- ✓ Art
- ✓ Fun with Friends

Just \$180  
for the full year

**Register Now!**

<https://bit.ly/prs2324>

For More Information,  
Email Civia White  
[cwhite@bethshalomkc.org](mailto:cwhite@bethshalomkc.org)

#### Office Hours

913-647-7279

MONDAY-THURSDAY 8:30 AM - 5 PM

FRIDAY 8:30 AM - 3 PM

Closed on Federal Holidays

#### Mt. Carmel Cemetery Hours 913-647-7279

MONDAY & WEDNESDAY 8:00 AM - 4:30 PM

TUESDAY & THURSDAY CLOSED

FRIDAY & SUNDAY 8:00 AM - 4:00 PM

SATURDAY CLOSED

NATIONAL HOLIDAYS 9:00 AM - 4:00 PM

JEWISH HOLIDAYS CLOSED

Exceptions: Thanksgiving, Christmas Day, New Year's Day & Easter

#### Sisterhood Gift Shop Hours

Gift Shop Schedule

913-647-7298

SUMMER HOURS:

By Appointment Only

EMAIL CONNIE SIMON AT [STLTKC@GMAIL.COM](mailto:STLTKC@GMAIL.COM) TO  
SET UP AN APPOINTMENT

#### Daily Minyan

MONDAY-THURSDAY 7 AM AND 6 PM

FRIDAY 7 AM

SUNDAY 8 AM AND 6 PM

(Morning Minyan is in Goldsmith Hall and on Zoom.  
Evening Minyan is on Zoom exclusively.)

Please note, Morning Minyan on Tuesday, July 4 will be  
at 8 am due to Independence Day.