



CONGREGATION
BethShalom

The Scroll

Community-wide: Tisha B'Av Observances & Service

Tisha B'Av (the 9th day of the Hebrew month of Av) is a day of national mourning. The holiday primarily commemorates the destruction of the 1st and 2nd Temples, but also other tragedies of the Jewish people.



Saturday, August 6 | 9:15 PM

Sunday, August 7 | 5:00 PM

CONGREGATION BETH SHALOM

CONGREGATION KEHILATH ISRAEL

A meaningful service with beautiful, mournful melodies, some engaging teaching, and a time for communal reflection on both painful times of our past and hope for our future.

- Ma'ariv Service
- Havdalah Service
- Hebrew & English Readings of Eichah (Book of Lamentations)
- Songs and Prayers

- Documentary: "Lonely Man Of Faith"*

**The movie is about Rabbi Joseph B. Soloveitchik, a rabbinic scholar of Yeshiva University who discusses Modern Orthodoxy, and how his frustration and conflicts as a man of faith influenced the balance of tradition and tension with change*

- Panel Discussion with Hazzan Ben-Yehuda, Rabbis Doug Alpert, Mark Glass, Stephanie Kramer, moderated by Rabbi Moshe Grussgott
- Mincha service at 8:00 PM, followed by a 10 minute Torah lesson, and ending with a Ma'ariv service
- Light Break Fast served at 8:55 PM

To RSVP for these observances, register online at <https://bit.ly/3uwwqmQ> or visit kcrabbis.org. For more information contact Annette Fish, Rabbinical Association Administrator/Program Director, afprogram@aol.com, 913-327-8226.

Sponsored by the Rabbinical Association of Greater Kansas City and area congregations.





Summer is also a season for beginnings...

In Judaism, we think of Spring or Fall as the seasons for beginnings. Spring brings Passover in the Hebrew month of Nisan, which the Torah describes as the first month. Fall brings the Hebrew month of Tishrei which kicks off the Jewish New Year, Rosh HaShanah, and all of the fall holidays. For Beth Shalom, though, this year summer is the season of new beginnings.

Annie and I went to Israel for two weeks of study and rejuvenation at the end of June / beginning of July, and when we came back – we had an entire new synagogue!

Beth Shalom and Ohev Shalom completed a successful consolidation, and we now have so many people who are meeting each other for the first time every Shabbat. Also, Steve Berman and Rabbi Padorr joined our professional team. In addition to the consolidation, we hired Civia White as our new Director of Youth & Family Education – and Hazzan Ben-Yehuda will be dedicating all of her time to clergy responsibilities. Finally, we welcomed Ben Novorr as our new Director of Youth and Family Programming.

The commentator, Rashi, is famous for writing that all beginnings are hard. I don't want to paper over the obvious emotional transitions that happen with new beginnings. But beginnings are also fun. It is a time of learning what new talents, energies and ideas are brought to a team. It is learning about the life stories of new friends from our Shabbat prayer and kiddush together.

The Psalmist writes:

Were not Your Torah my plaything

I would have perished in my affliction. (Ps. 119:92)

Dr. Aviva Gottlieb Zornberg uses this verse to teach about primordial stories of our people that were written on scrolls even before we were given the Torah at Mt. Sinai. It was, she writes, the act of playing with the scrolls on Shabbat that gave life and redemption to the Israelites even under Pharaoh's yoke of slavery.

We often, incorrectly, ascribe solemnity, seriousness and downright sadness to Jewish living and learning. Jewish living and learning ought to be a source of joy – and the joy emerges from creative play, innovation and newness.

Having so many new folks coming together on our professional team and in our sanctuary reminds me of the fun (and nervousness) of the first day of summer camp. There is so much potential! There are so many unknowns! Summer camp, summer road trips, late summer walks in the neighborhood, summer lingering at picnics are all places of play. I can't wait to see what the playing and creativity at Beth Shalom this summer will reap for the fall, the winter, the spring... and yes, even next summer!

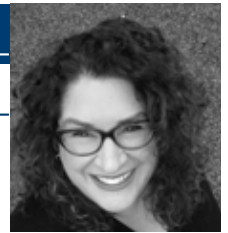
David M. Glickman

RABBI DAVID M. GLICKMAN

dglickman@bethshalomkc.org

Annual Congregational Meeting





For almost two years, the members of the Kiddush Corps had to be extremely adaptable! From week to week, they had to be ready to change course up until the very last minute. As COVID continued to morph, the Opening Up Committee met and gave their recommendations based on the numbers. Some weeks, we were not able to have food at all. Some weeks, we had boxed lunches to go. Although it was great to see everyone behind their masks in the pickup line, it was not nearly as great as it would have been to share a meal together. As CDC Guidelines changed, Kiddush Corps changed as well. We provided options of to-go boxes, and outdoor eating options. We even got to try indoor seating (spaced out), but that only lasted a week before needing to return to to-go boxes. And then, we got the go ahead to have a “normal” buffet with servers and finally, the real deal – the serve yourself kiddush lunch that we had all missed and yearned for. It has been amazing to see everyone come back together to share a meal around a table in Goldsmith Hall after services.

In times when people were scared to go out in public, Kiddush Corps showed up to make meals for our community. Now that we are trying to be more “back to normal”, Kiddush Corps is still showing up each week to prepare meals and clean up after Kiddush Lunch. Bill Shapiro looks for deals, integrates new menus, shops and organizes, as Harold prepares the crew to come in each week to serve a lovely meal.

We hope you will join us for Shabbat Services in the near future and hope you choose to stay for lunch!

If you would like to sponsor a Kiddush Lunch in honor of or in memory of a loved one, please contact Mel at melanies@bethshalomkc.org. If you would like to donate any amount to the Kiddush Fund, to help fund these meals each week, please click here <https://bethshalomkc.shulcloud.com/payment.php>.

A heartfelt Mazal Tov to the following individuals who have served as our Kiddush Corps Volunteers Extraordinaire: Renana Abrams, Phyllis Abrams, Roger Cooper, Alan Edelman, Sara Federman-Allen, Annie Glickman, Dani Glickman, Berenice Haberman, Todd Hollander, Harold Kaseff, Barry Kaseff, Barbara Katz, Mirra Klausner, Andrea Krakow, Susan Lebovitz, Adam Matsil, Kim Matsil, Ernie Rosenthal, Susan Rosenthal, Rhea Salasche, Bill Schlosberg, Marge Schlosberg, Amy Schultz, Donna Seymour, Joyce Shapiro, Bill Shapiro, Bruce Silverman, Raye Silverman, Debbie Sosland-Edelman, Stewart Stein.

If you would like to volunteer to help prepare a Kiddush Lunch, please contact Harold Kaseff at harold@kaseff.com.

STEFANIE MISLER WILLIAMS
EXECUTIVE DIRECTOR
swilliams@bethshalomkc.org

Introducing Our New Youth And Family Programming Director

We are so excited to announce that Ben Novorr will be joining our staff as the Youth and Family Programming Director!

Ben grew up in Lawrence, Kansas and attended the University of Kansas, where he graduated in May 2021 having double-majored in Elementary Education and Jewish Studies. Ben was an active student leader and intern at KU Hillel, serving on the Union for Reform Judaism's inaugural College Leadership Team, working as a religious school teacher, Jewish summer camp counselor and assistant director, and intern with the Jewish Federation of Kansas City. Most recently, Ben served as the Jewish Student Life Coordinator at Indiana University Hillel, where he mentored student leaders, oversaw many student groups within Hillel, taught courses for the university, and built hundreds of strong and lasting relationships with Jewish students on campus.

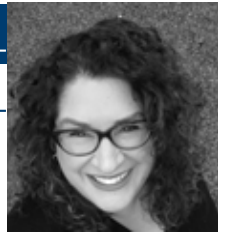


with membership and the professional staff!

Ben is so excited to return home to the Kansas City area to work with the incredible families and teens at Beth Shalom and to bring new, creative, and innovative programming to the congregation in partnership

You can reach Ben at youthdirector@bethshalomkc.org or at 913 647 7191.

The Descendants of Jennie and Abraham Marks



For many years, when Harriet and Jerry Dorf drove to Kansas City to visit her parents, they always stopped at the cemetery. Harriet's maternal grandparents, Abraham and Jennie Marks were buried at Mt Carmel, as well as all six of their children, their children's spouses, and one grandchild. Last year, when Harriet and Jerry received our Cemetery Solicitation, asking for help in building a fund that helps keep Mount Carmel and all the graves in good shape in perpetuity, they wanted to help.

Harriet called her cousin, Ed Dennis. He was very enthusiastic, and they decided to reach out to as many cousins as they could to see what they thought about raising money for what they were calling, the "Descendants of Abraham and Jennie Marks Cemetery Fund." They noted in their correspondence, that although they are different from each other in many ways, they are all the same in one way. They were all descendants or spouses of descendants of Abraham and Jennie. They didn't think the next generation, that lived in other cities, would be interested in supporting this effort. But after they discussed it among their family members, they were surprised at the number of people who were interested and wanted to participate. They raised well over \$7,500. The money came from grandchildren, great-grandchildren and great-great-grandchildren! Harriet and Ed said, "Most of us never met Abraham. Some of us met and talked with Jennie. But all of us owe a huge debt of gratitude to both of them. Coming to America in the late 1800's and, raising six children in Kansas City - family was most important to them. That feeling of family still exists to this day."

That is why they wanted to see many contributions to the "Descendants of Abraham and Jennie Marks Cemetery Fund", because they felt Abraham and Jennie deserved that honor. Jerry said "You have done a beautiful job over the

60 plus years that my wife Harriet and I have been visiting Mount Carmel Cemetery. We want to help you continue to take care of it long after we are gone."

This is such a meaningful way to honor their memory, and we are so very grateful for this gift. If you would like to donate to Mount Carmel Cemetery, please contact swilliams@bethshalomkc.org.



STEFANIE MISLER WILLIAMS
EXECUTIVE DIRECTOR

swilliams@bethshalomkc.org

ORDER YOUR CHALLAH AND SUPPORT CONGREGATION BETH SHALOM



Frieda's Heavenly Challah will be available at Congregation Beth Shalom.

Regular Challah is \$7.00. Small Challah is \$3.50.

Challah Knot Rolls are \$7.00 a dozen or \$3.50 a half dozen.

To place an order, call or text Bill Shapiro at 913-558-4089. Orders must be received by Tuesday morning so I can mix the dough. Baking will occur on Wednesday. Pickup will be in the CBS Office on Thursday between 9:30 am and 4:00 pm and/or on Friday morning between 9:30 am and 2:30 pm. All money from Frieda's Heavenly Challah is donated to our kitchen for updates and improvements. Payment will be by cash or check. If paying by check, please make it out to Congregation Beth Shalom and put "Challah Fund" in the memo line.





Looking Forward To Many New Beginnings

by HAZZAN TAHL BEN-YEHUDA
hazzantby@bethshalomkc.org

This month is the first month of my tenth year at Congregation Beth Shalom, and what a momentous year it already is! With the consolidation of Ohev Sholom and Beth Shalom, the building of our new sanctuary soon to commence, Civia White as our new director of the Polsky Religious School and Ben Novorr as our new Youth and Programming director, our office, school and prayer spaces are full of renewed energy and excitement. Since I have handed over the reins of the religious school to Civia White, I am now focusing on several different aspects of our ritual and spiritual synagogue life.

Over the course of the next year, I will be teaching many new melodies and songs that we will use in our Shabbat and holiday services. I hope you'll join me for Rising Song, Shabbat afternoon song sessions immediately after kiddush lunch on selected weeks. We will also be using these new tunes in Tefillateinu, our monthly instrumental Shabbat morning services that will kick off in the fall. Dates for Rising song and Tefillateinu will be published soon.

I will refocus our Bar and Bat Mitzvah program, introducing programming for 5th, 6th and 7th grade students and their families so that students as well as parents have many opportunities to get to know each other and become a close and supportive community within our greater shul community. PRS students will study with me, and PRS and HBHA students will spend time together and with me on and off the bimah over the years leading up to Bar and Bat Mitzvah in ways they we have not been able before.

In addition to actively engaging those students who have recently celebrated Bar or Bat Mitzvah as Torah readers, I am excited to offer classes and one-on-one or small-group lessons for those adults who want to either improve their Torah and Haftarah chanting skills, or who would like to

develop these skills for the first time. Our consolidated community has a rich tradition of excellence in lay bimah leadership, and we are eager to welcome new readers and service leaders in the months and years to come. If you are interested in learning bimah skills and would like to take a role in our services, please reach out to me. I will be training Torah readers, Haftarah readers, service leaders, room gabbai'im and Torah gabbai'im.

As you make your way back to Goldsmith Hall for Shabbat and holidays, you may notice changes in our services. From new melodies to subtle but deeply meaningful changes in old and beloved melodies and words, I hope you will give us feedback on how you feel at shul. Change can be challenging, and yet none of us can evade it. There will be something "new" to you, whether you've been davening in Goldsmith Hall for years, or whether you're new to this prayer space. Rabbi Glickman, Rabbi Padorr and I cannot wait to see you at shul and to hear your feedback.

Next month, I hope you'll read my column where I will explain some of the changes you may have noticed in the Amidah and the Aleinu. If you haven't noticed them, I challenge you to listen closely on Shabbat and daily minyan. Finally, I hope you noticed the new name of my article space, Lishmo'a V'lashir - to listen and to sing. I look forward to hearing your feedback on our worship together, and to engage with you in meaningful and uplifting song that comes out of the conversations we have when we truly hear each other. Until then, L'hitra'ot - I hope to see you soon!

COMMUNITY EVENTS: DAY OF DISCOVERY

Day of Discovery is returning on Sunday, August 21 at the Jewish Community Campus! Day of Discovery is a unique opportunity for the entire Jewish community to discover and explore the richness, diversity, and joy of Jewish learning in Kansas City.

Registration opens Monday, July 25th. visit <http://www.dayofdiscoverykc.org> today to learn more about the exciting sessions that will be offered at this year's day of learning. The last day to register is August 15, so don't wait as space is limited in some classes.

This year's event will also include an engaging and interactive family program from 10-11:30 a.m. for parents and their children in pre-kindergarten-5th grade. Visit <http://www.dayofdiscoverykc.org> for more information.

Day of Discovery is a partnership of the Rabbinical Association of Greater Kansas City and Jewish Experiences, A Collaboration of Jewish Federation and The J. Other co-sponsors include Jewish Family Services, Village Shalom and area congregations. This program is generously funded in part by the Jewish Federation of Greater Kansas City.

Hine Mah Tov Umah Naim—How Beautiful for Us to Join Together



by ALAN L. COHEN | RABBI EMERITUS

As I prepared to live stream the July 2nd Service, I was filled with greater joy and pleasure than usual. Knowing that this was to be the first service since the consolidation of Beth Shalom and Ohev Sholom, I eagerly looked forward to the joy of Jews joining together in “Jacob’s Tent” for prayer. There was a feeling of great comradery as the service unfolded. Years of effort and numerous administrations had pursued this goal. This time was different and the joy was palpable. A special thank you to all of those who worked so diligently on this cause from both congregations both now and before—staff and laity. Harold Kaseff is especially to be commended for his commitment to making this a reality. He brought people together much like Aharon who was a lover and a pursuer of peace—one who made “shalom”—completeness—possible. Kol HaKavod to all who made this a reality.

Rabbi Padorr said it well in her d’rash/sermon on that Shabbat morning—unlike Korah, the parshah that Shabbat, and who has epitomized divisiveness and rebellion among most of the commentaries, the consolidated communities represented a willingness to listen and dialogue in order to bridge differences and bring the two congregations together.

As Rabbi Padorr said, our tradition contrasts Hillel and Shammai with Korah, for whereas the latter refused to talk with Moshe, Hillel and Shammai have always represented those whose views while rarely in agreement were always able to listen and dialogue with each other. For that reason, in contrast to Korah, their arguments which were for the sake of heaven were preserved.

While I have been physically away from KC area for a decade, I am still very much a part of the community and Beth Shalom is central to my thoughts. I am so happy to look forward to a future of strength and growth with Beth Shalom and Ohev Sholom as one. Conservative Judaism will be the better for this move. May our community continue to go from strength to strength.

May our community long be able to recite those words—“Hine mah tov umah naim shevet ahim gam yahad”—“how beautiful it is for Jews to come together in harmony and wholeness”.

It truly was a “Shecheyanu” moment.

Anatomy Of A Successful Consolidation



by HAROLD KASEFF | SECRETARY

After nearly twenty years, we have reached a pinnacle point for both Congregation Beth Shalom and Congregation Ohev Sholom. June 26, 2022 is a day we will all remember when both congregational memberships voted to move forward as one consolidated Conservative congregation in Kansas City.

The catalyst for this successful process was the **strong team effort** of all involved. Prior to this time, both Congregations Ohev Sholom and Beth Shalom tried three times unsuccessfully to consolidate.

Subsequent to 2018, several actions were engaged and truly reflective what needed to be done:

- Starting in 2019, the president of Beth Shalom agreed to resumption of talks with Ohev Sholom surrounding potential consolidation. In 2020, discussions were held with the current and immediate past presidents of Beth Shalom and Ohev Sholom.

- Ohev Sholom’s long range planning group considered future options under the leadership of their congregation president.

- In early spring 2021, the leadership of both congregations independently requested formal correspondence communicating ongoing interest in pursuit of consolidation.

- May 3, 2021, Congregation Ohev Sholom outlined 19+ points for consideration by Beth Shalom relative to consideration for moving forward with consolidation. After reviewing the points, Beth Shalom’s Executive Committee and Board of Directors agreed, with minimal changes, to move forward.

- A Joint Task Force of engaged members from Congregation Beth Shalom and Congregation Ohev Sholom met monthly since that time to mitigate steps associated with transition. In anticipation of a formal vote from both congregations the task force met weekly leading into June 26, 2022.

On Sunday, June 26, 2022 Congregation Beth Shalom and Congregation Ohev Sholom membership voted strongly in approval of consolidation.

The **strong team effort** is one of the major factors in reaching this consolidation. A hearty thanks to you all!



by CARLA OPPENHEIMER

The Good Faith Network (GFN) had a very busy first year. The Network is where Beth Shalom joined with other communities of faith across Johnson County to work together to improve the quality of life for our most vulnerable citizens.

We heard 600 stories at 65 listening sessions throughout Johnson County, Kansas which included 511 network members from 20 member congregations. 367 people attended the November 8 Community Problems assembly where we chose two areas of focus: mental health and the homeless. Through the research committees over the next four months we found that people in mental health crisis often end up in jails or ERs because there are only ten crisis stabilization beds available, but experts believe we need one crisis center for every 250 thousand residents.

There are 180 plus homeless in Johnson County on any given night. 800 residents are waiting on section 8 housing vouchers and 1000 students are homeless each year.

We were called to action with a powerful voice of 1200 plus people at the Nehemiah Assembly in May. The housing subcommittee gave a commitment that the new Housing Coordinator will be responsible for addressing homelessness, and the GFN Mental Health Action Team received an invitation to join the crisis center work group led by the county.

We are excited to be part of the GFN for 2022/2023. If you are interested in joining through Beth Shalom, please contact Carla Oppenheimer at carlaoppenheimer@gmail.com.

CONFIRMATION TRIP 2022



Contributions through July 13 are listed below. Thank you for thinking of us.

BETH SHALOM GENERAL FUND

In Honor of
Rick Hurst's 60th birthday
Ken & Lisa Schiffman

In Honor of
the 50th Wedding Anniversary of Sheila Stolov and Ron Schiffman
Warren & Beth Bayzman

In Honor of
the 50th Wedding Anniversary of Steve and Marcia Schorr
Warren & Beth Bayzman

In Memory of
Betty Agron
Jack Forman

In Memory of
Ben Bell
Richard & Linda Bell

In Memory of
Mike Capito
Byron Capito

In Memory of
Max Clemensberg & Sadie Clemensberg
Patrick & Marietta Dunn

In Memory of
Leonard Enslein
Jerald Enslein

In Memory of
Robert Shelby Ferrel
Naomi Cohen

In Memory of
Ronald Freed
Randy & Dini Freed

In Memory of
Jack Glazer
Paulette Ramm

In Memory of
Anne Hadas
Samuel & Judy Florman

In Memory of
Bessie Kaplan
Lawrence Pakula

In Memory of
Ida Kopec
Abraham & Marlene Kopec

In Memory of
Linda Leibowitz
Antonio Pacheco

In Memory of
Rosie Lerner
Harold Samuels Jr

In Memory of
Harriet Morgan
Richard & Linda Bell

In Memory of
Sheridan Morgan
Richard & Linda Bell

In Memory of
Golda Rosen
Nathan Rosen

BEVERLY & HARVEY BODKER ENDOWMENT FUND

In Memory of
Ira Friedson
Fred & Cynthia Bodker
Harvey Bodker

In Memory of
Patti Shapiro
Fred & Cynthia Bodker

CEMETERY MAINTENANCE FUND

In Memory of
Anna Ace
Harry & Hedra Merson

In Memory of
Joanne Pack
Steve & Karen Pack

DAVE & JEAN BROCKMAN SCHOLARSHIP FUND

In Memory of
Patti Shapiro
Richard & Charlotte Brockman

FRANK SCHLOZMAN SCHOLARSHIP FUND

In Memory of
Irene Malyn
Michael & Wendy Malyn

GALE & MAXINE GROSSMAN RELIGIOUS SCHOOL FUND

In Appreciation of
Mr & Mrs Brian Grossman
Maxine Grossman

In Appreciation of
Mr & Mrs Josh Lewis
Maxine Grossman

In Memory of
Sandra Newberg
Maxine Grossman

GERSHON HADAS SCHOLARSHIP FUND

In Gratitude
for the Recovery of David Lerner
Bruce & Devra Lerner

In Honor of
the Birth of Benjamin Lerner
Bruce & Devra Lerner

In Memory of
David Lerner
Bruce & Devra Lerner

HANAN WEDLAN FAMILY FUND

In Memory of
Mary Ann Mour
Mitch & Lisa Hamburg

In Memory of
Ida Wedlan
Mitch & Lisa Hamburg

HAZZAN BEN-YEHUDA'S DISCRETIONARY FUND

In Appreciation of
Hazzan Tahl Ben-Yehuda
Roberta & Sam Goller
Deborah Rosenberg

In Memory of
Linda Schick
Allen Schick

KCUSY FUND

In Memory of
Max Fox
John Goldberg & Marla Brockman

KIDDUSH FUND

In Honor of
Eric & Miriam Kaseff's Anniversary
Eric & Miriam Kaseff

MARCIA EVELOFF LECHEM FUND

In Honor of
Mark Pelofsky's 60th Birthday
Ella Ullman

PHILLIP & BARBARA HODES FAMILY ENDOWMENT FUND

In Memory of
Stuart Radetsky
Phillip & Barbara Hodes

In Memory of
Patti Shapiro
Steven & Jennifer Paul

POLSKY RELIGIOUS SCHOOL FUND

In Appreciation of
Jason Krakow
Rachel Krantz & Edward Goldstein

In Memory of
Rabbi Mordecai Schultz
Naomi Kauffman

RABBI ALAN L. COHEN SENIOR RABBI CHAIR FUND

In Memory of
Helen Rae Cerier
Alan & Linda Cohen

RABBI GLICKMAN'S DISCRETIONARY FUND

In Appreciation of
Rabbi David Glickman
Roberta & Sam Goller
Jerry & Sharon Lindenbaum
Stan & Mary Weiner

In Memory of
Moses Berger
Arthur & Margaret Berger

In Memory of
Jacques Choikhit
Steve Choikhit

In Memory of
Della Glass
Paul & Janet Leeds

ROSE EVELYN SPORN PRIMARY BOOK FUND

In Memory of
Leon Rosengarten
Inez Kaufman

ROSE FAMILY EARLY CHILDHOOD EDUCATION CENTER

In Honor of
Joel Pelofsky's 85th Birthday!
Morris & Linda Zwillenberg

In Memory of
Michael J. Blackman
Charlene Ilkowitz

In Memory of
Mildred Drifon
Sheldon & Stephanie Pessin

In Memory of
Aileen Forman
Jack Forman

In Memory of
James Pessin
Sheldon & Stephanie Pessin

SACRED SPACE CAMPAIGN

In Support of
the Special Afghan Fund
Melvin Britton

STACEY'S STUDY

In Memory of
Stacey Bell
Jeffrey & Carol Katz

In Memory of
Ethel Pack
Steve & Karen Pack

In Memory of
Louis Pack
Steve & Karen Pack



Of Blessed Memory We express condolences to our Beth Shalom Members, their Families and Friends.

Marcia Sarachek, z"l JULY 3- 4 TAMMUZ Helen Rae Cerier, z"l JULY 4 - 5 TAMMUZ

PLAQUES HAVE BEEN DEDICATED *In Memory Of...*

Yahrtzeits Join us for morning or evening minyan to say Kaddish for your loved one. See service schedule, page 11.

<p>AUG 1-4 AV Sadie Bell Ann Goller Elick Phillip Feingold Bernard Greenberg Fannie Lerner Edith Mendy Bronia Roslawowski Harry Turock</p> <p>AUG 2-5 AV Rachel Bloomgarten Don H. Finestone Sadie Gumowitz Idy (Ida) Hurwitz Rachel Turk Hurwitz David Kanter Freda Lipsitz Carl Minkin Jacob Poizner Phillip Samuelson Charles Schoen</p> <p>AUG 3-6 AV Bessie Abramson Morris L. Bigus Pearl Brown Anna Cohen Samuel E. Dunn Rose Gastman Samuel A Katz Jacob Kopperman Leo J. Levinson Bela Lipszyc Anna Naron Sam Rosga Morris Schoen Alvin Shapiro Geraldine Silvers Abraham Vinick Sarah R. Weinstein Sarah Wolfberg</p> <p>AUG 4-7 AV Barry L. Aronson Joseph E. Chambers Gussie Kaufman Samuel Kaufman Lynn Kisluk Betty Ann Koralcik Herman Labowitz Reliz Lenet Morris J. Levin Anna Dora Peltzman Sam Samberg Jacob Siegelbaum Dora Walker</p> <p>AUG 5-8 AV Fannie Eisen Barney Gershon Naomi Goldstein Nathan Keen Morris Rapschutz Abraham Robinson Sarah Rocher Fannie Shapiro</p>	<p>AUG 6-9 AV Alvin Arenson Allan Birman Betty Birman Bessie Bordman Mary Chernikoff Mordecai Crosner Rosa Crosner Barbara Enstein Rebecca Rachel Furman Bessie Goldberg Jennie Himmel Anna Hoffman Henshen Keller David Leibtag Emma Loeffler Siegfried Loeffler William Peltzman Mitchel Rose Anna Tempofsky Pauline Yaskolka</p> <p>AUG 7-10 AV Melvin Ellis Beyer Sarah Golding Benjamin Kaplan Neil F. Miller Jennie Millman Mendel Oshry Clara Rothblatt Esther Shapiro</p> <p>AUG 8-11 AV Alfred Aron Morris Balot Ida Baron Barney Cinnamon Abraham Cohen Sophia Cohn Rae Dloogoff Jacob Goldstein Hilda Handel Ida Z. Joseph Richard L. Josephson Louis Kiansky Esther Lesser Charlotte S Margolin Meyer Peltzman Sarah Scrinopskie Ethel Seider Katie Solsky Philip Wang</p> <p>AUG 9-12 AV Toby Chemel Max Flicker Ida Frank Mrs Dorothy Glass Dora Gold Nathan S. Goldberg Mrs Serena Hammer Anna Horowitz Samuel Isaak Phillip Katz Hyman J. Levi Hyman Rosen Ben Solomon</p>	<p>AUG 10-13 AV Rebecca Barash Bessie Brenner Samuel J Brown Sigmund Dollman Pearl Gorelick Rose Gould Jack Kahn Harry Levy Jennie Marks Isaac Sackin Harris Segelbohm Samuel Spector Ruth Unger Evelyn Yodler</p> <p>AUG 11-14 AV Norma Bush Abraham Dorfman Rebecca Greenstein Abe J. Kaplan Esther Press Minnie Rafiel Kreine Shankman Henry Sosland</p> <p>AUG 12-15 AV Robert Ruby Bernstein Sarah Toby Alport Freshman Samuel L. Greenberg William Haith Rose Hyman Benjamin Katz Frieda Shanberg David Steinberg Sadie Tonopolsky</p> <p>AUG 13-16 AV Morris Firestone Annette Glaser Sigmund Gundle Freida Mendell Abraham Sidley Benjamin Silverman Roni Smith Louis J. Weintraub</p> <p>AUG 14-17 AV Rebecca Berman Ethel Hudson Cohn Abe Eisen Louis Hyman Forman Jacob Jagoda Bess Merser Lena Morris Rubin Moskovitz Joel Polsky Isadore Rashbaum Lewis Leo Sofnas Sarah Wang</p> <p>AUG 15-18 AV Ida Abrams Daniel Aranoff Pola Baum Marie Bell</p>	<p>Aaron Bloustine Hyman Brand Sylvia Bromberg Margaret Fuller Benjamin Gastman Lillie Lefkovits Gladys Litwin Normand Sidney Osur Kathleen C Gelpman Peltzman Harriett Prevan Jeanette Rogosin Jacob J. Taxman Solomon Wasserman Sarah Waxenberg Alex A. Wedlansky Aaron Ziman</p> <p>AUG 16-19 AV Samuel Baum Stacey M Bell Joshua Cinnamon Maurice Meyer Dubinsky Ruth Milgram Krigel Eisberg Meyer Gordon Anna Halle Jack Kay Rachel Levinson Ruthye Nowick Sarah I. Rose Eunice Studna Sarah Wishnow</p> <p>AUG 17-20 AV Bernadine Benjamin Barnett Cohen Donna Jean Cohen Frank Manuel Coleman Esther Pauline Dubinsky Esther Duni Bess Ginsberg Essie Goodman Max Hecht Joseph Klein Sam Lustig Simon Navran Sam Pasmanik Sarah M. Schere Abe Schuman Goldy Siegel</p> <p>AUG 18-21 AV Pesyl Brand I.J. Cohen Mollie Dashiell Jack Denowitz Chaim Fogel Anna Bluma Godock Edith Goldstein Reuben Kantor Jacob Levinson Edythe Schwartz</p>	<p>Sarah Siegel</p> <p>AUG 19-22 AV Charles Bass Louis Donovitz Robert H Fichman Maurice Loeffler Jacob Max Esther Millstein Clara Ommerman-Gilgus Harriet Schoket Samuel Sukon Rosa Witschner</p> <p>AUG 20-23 AV Richard Biederman Sherman Cohen Ed S. Michelson Alana Morris Louis Pinsky Harry Robinson Sam Rosen Morris Mike Ruback Jacob Rubin Joseph Schlosberg Hortense Stern</p> <p>AUG 21-24 AV Frances Franks Libbie Goldberg Reuben Josephson Max Lerer Rena Agron Rosenberg Philip Rosenblatt Abraham L. Snyder Hymie J. Sosland John Spitaufsky Gedaliah Vigder</p> <p>AUG 22-25 AV Yoheved Flekier Max Gluck Emilie Isaak Philip L. Levi Emanuel Reichman Frances Sandler Samuel S. Shapiro Marilyn Wasserman Allen S. Yukon</p> <p>AUG 23-26 AV Edith Bell Nathan Peltzman Abe Sander</p> <p>AUG 24-27 AV Ida Cohen Samuel Cohen Nathan Dreiseszun Abraham S. Goodman Louis Grace Louis H. Karosen Joe Lipsky Beatrice Belle Wilk Anna Winett</p>	<p>AUG 25-28 AV Efta Bayzman Philip J Cohen Fannie Friedman Rebecca Glassman Moishe Isaac Kamar Paulina Muller Samuel Pucker Fanny Shlemovitz</p> <p>AUG 26-29 AV George Deiboch Harry Dubinsky Ben Goldstein Israel C. Kamber Ada Karosen Rebecca Lieberman Abe Markus Abe Radetsky Pro Sherman Charles S. Smith Mollie Spector Samuel Summers</p> <p>AUG 27-30 AV Reline Eisemann Anna Greenberg Sam Horvitz Michael L. Katz Theodore Kort Jake Lazarus Philip Lieberman Ann Pape Joe Posner Stanley D Rostov William Schoen Sol Segal Celia Spicer Harry Teiblum</p> <p>AUG 28-1 ELUL Edward Asner Louis Blond Maurits Jessurun Cardozo Rose B. Denowitz Fred Einhorn Fannie Fish Kenneth Fox Albert Garfinkel Jack Gersh Tiby Gilbert Esther Gilgus A D Jacobson Henrietta Katzman Jacob Langner Eva Naman Goldie Riss Israel Rocher Nathaniel Sharlip Jacob Tulchinsky Sharon H. Weinstein Brian R Yodler</p> <p>AUG 29-2 ELUL Bess Greenberg Byers Edward Cohn Jacob Drew Reubin Katz</p>	<p>Rose Kaufman Ellis Kraft Meyer Minkin Lottie Nodiff Leavitt Jean T Parmet Libby Rashbaum Shrueel Rogosin Morris Sanell Josef Segelbohm Samuel I Simon Anna Wedlan</p> <p>AUG 30-3 ELUL Joseph Brenner Charlotte Chernikoff Serena Tabolsky Eisman Serena Esther Grinpas Jack Klein Jack Lesser Sonia Mendelsohn Elk Peltzman Sonia Prostic Louis Rosenblatt Harry Abe Rosenblum Alice Masonoff Weinstein</p> <p>AUG 31-4 ELUL Myrl Cohen Sam Cohen Rose Mio Cohn Bessie Eichenberg Beatrice Fogel Abraham Goldberg Slava Goldberg</p>
---	--	---	--	---	--	--

August Anniversaries

If you want to make a donation, in honor of your anniversary, contact Melisa, 913-647-7281.

DAY	YEARS	DAY	YEARS
1	Joshua & Sheryl Stein 18	17	Thomas & Mara Balke 36
2	Howard & Debra Cohen 41	18	Alan & Tina Chapman 59
3	Adam & Christina Miller 20	18	Harold & Linda Schlozman 54
3	Mark & Trudy Slatkin 59	18	Robert & Aletha Simon 59
4	Stephen & Riki Fein 59	18	Robert & Nita Levy. 54
5	Gustav & Flora Faverman 47	19	Clifford & Paula Cohen 50
5	Jared & Lauren Levy. 10	19	Edward & Alicia Klein 32
5	Lloyd & Jacqueline Stahl 43	19	David & Gail Wainstock 33
5	Marvin & Phyllis Denton 66	20	Joshua & Alexis Lebowitz 11
6	Brian & Adryan Steinberg 16	22	Alan & Joan Jacobson 51
7	Robin Abramovitz & Bryan Thompson 28	23	David & Frances Sternberg 52
10	Lawrence & Nancy Carl 42	25	Erwin & Phyllis Abrams 59
10	Gregory & Ashley Nerman 10	25	Arnold & Joan Kort 59
10	William & Marjorie Schlosberg 53	26	Alexander & Peggy Davis 49
10	Stefan & Carol Offenbach 53	26	Stanley & Emily House 60
11	Elliott & Nancy Franks 49	26	David & Jennifer Podor 43
11	Allan & Marilyn Kaufman 48	26	Philip & Cheri Rabcicoff. 56
11	Melvyn & Janet Kogan 59	27	Richard & Charlotte Brockman 61
11	Brian & Tiferet Mayer 9	27	Roger & Berenice Haberman 28
12	Steven Berman & Judy Jacks Berman 47	27	Howard & Gerry Trilling 55
13	Arthur & Diane Federman. 50	28	Lawrence & Harriet Almaleh 39
13	Jay & Katharine Levine 27	28	Jeremy & Liron Applebaum. 11
14	Al & Barbara Beitchman 62	28	Scott & Carla Oppenheimer 34
14	Stanley & Marjorie Brand 56	28	Daniel & Vivien Schlozman 62
14	Jay & Terri Herman 34	29	Jason & Shayna Kerschner 18
15	Jerald & Rochelle Pelofsky 57	29	Stephen & Ellen Kort 51
15	Michael & Beth Sherry. 18	29	Natan & Shura Kolb 52
15	Suzy Sostrin & Hunter Rainer. 12	30	Robert & Evie Grant 35
15	Stewart & Esther Stein 51	30	Arnold & Dorene Manvitz 58
16	Eric Poe & Helaine Cohn 24	30	David & Gerri Ruben 30
17	Jeremy & Danielle Antes 14	31	Jeffrey & Corrine Blackman. 37
17	Byron & Gerri Ginsburg 36	31	Marc Hammer & Alana Muller 25
17	Stephen & Toba Maslan. 47	31	Michael & Julie Levine 25

Bar Mitzvah

Joshua Ari Snitz

August 20 / 23 Av

Joshua Ari Snitz is the son of Ian and Wendy Snitz and is the brother of Leah Snitz. He is the grandson of Lou and Vicki Asner, of Overland Park, KS. He is great-grandson of Irwin and Sandy Snitz, of Overland Park, KS and Louisa, z”l and Myles Levin, of Kensington, MD. He attends Hyman Brand Hebrew Academy. Joshua enjoys golf, computer coding and camping. For his Bar Mitzvah project, Joshua raised money and collected food for the JFSKC Food Pantry. After purchasing food with the money and with the food collected, Joshua donated more than 500 pounds of food.



Congregation Events – See each department for its activities.

RFECEC = Rose Family Early Childhood Education Center
PRS = Polsky Religious School

Aug 1 4 Av	MONDAY Morning Minyan.....7:00 AM Zoom Evening Minyan...6:00 PM	Aug 11 14 Av	THURSDAY Morning Minyan.....7:00 AM Zoom Evening Minyan...6:00 PM	Aug 22 25 Av	MONDAY Morning Minyan.....7:00 AM Zoom Evening Minyan...6:00 PM
Aug 2 5 Av	TUESDAY Morning Minyan.....7:00 AM Zoom Evening Minyan...6:00 PM	Aug 12 15 Av	FRIDAY Morning Minyan.....7:00 AM Connect for Shabbat.....4:00 PM	Aug 23 26 Av	TUESDAY Morning Minyan.....7:00 AM Zoom Evening Minyan...6:00 PM
Aug 3 6 Av	WEDNESDAY Morning Minyan.....7:00 AM Torah For Lunch.....12:00 PM Zoom Evening Minyan...6:00 PM	Aug 13 16 Av	SATURDAY Library Minyan.....9:30 AM Shabbat Morning Service...9:30 AM Tot Shabbat.....10:45 AM 8:58 PM Havdalah on FB Live	Aug 24 27 Av	WEDNESDAY Morning Minyan.....7:00 AM Torah For Lunch.....12:00 PM Zoom Evening Minyan...6:00 PM
Aug 4 7 Av	THURSDAY Morning Minyan.....7:00 AM Zoom Evening Minyan...6:00 PM	Aug 14 17 Av	SUNDAY Morning Minyan.....8:00 AM Zoom Evening Minyan...6:00 PM	Aug 25 28 Av	THURSDAY Morning Minyan.....7:00 AM Zoom Evening Minyan...6:00 PM
Aug 5 8 Av	FRIDAY Morning Minyan.....7:00 AM Connect for Shabbat.....4:00 PM	Aug 15 18 Av	MONDAY Morning Minyan.....7:00 AM Zoom Evening Minyan...6:00 PM	Aug 26 29 Av	FRIDAY Morning Minyan.....7:00 AM Connect for Shabbat.....4:00 PM
Aug 6 9 Av	SATURDAY Library Minyan.....9:30 AM Shabbat Morning Service...9:30 AM 9:07 PM Havdalah on FB Live Community-wide Erev Tisha B'Av Program/Services at CBS(outdoors).....9:15 PM	Aug 16 19 Av	TUESDAY Morning Minyan.....7:00 AM Zoom Evening Minyan...6:00 PM	Aug 27 30 Av	SATURDAY Library Minyan.....9:30 AM Shabbat Morning Service...9:30 AM Aufruf of Stacey Garren and Gabriel Mullakandov.....9:30 AM 8:39 PM Havdalah on FB Live
Aug 7 10 Av	SUNDAY Morning Minyan.....8:00 AM Community-wide Tisha B'Av Program/Services at Kehilath Israel.....5:00 PM	Aug 17 20 Av	WEDNESDAY Morning Minyan.....7:00 AM Torah For Lunch.....12:00 PM Zoom Evening Minyan...6:00 PM	Aug 28 1 Elul	SUNDAY Morning Minyan.....8:00 AM Unveiling of Warner Bergh.10:00 AM Zoom Evening Minyan...6:00 PM
Aug 8 11 Av	MONDAY Morning Minyan.....7:00 AM Zoom Evening Minyan...6:00 PM	Aug 18 21 Av	THURSDAY Morning Minyan.....7:00 AM Zoom Evening Minyan...6:00 PM	Aug 29 2 Elul	MONDAY Morning Minyan.....7:00 AM Zoom Evening Minyan...6:00 PM
Aug 9 12 Av	TUESDAY Morning Minyan.....7:00 AM Zoom Evening Minyan...6:00 PM	Aug 19 22 Av	FRIDAY Morning Minyan.....7:00 AM Connect for Shabbat.....4:00 PM	Aug 30 3 Elul	TUESDAY Morning Minyan.....7:00 AM Zoom Evening Minyan...6:00 PM
Aug 10 13 Av	WEDNESDAY Morning Minyan...7:00 AM Torah For Lunch.....12:00 PM Zoom Evening Minyan...6:00 PM	Aug 20 23 Av	SATURDAY Library Minyan.....9:30 AM Bar Mitzvah of Joshua Snitz/Shabbat Morning Service.....9:30 AM 8:49 PM Havdalah on FB Live	Aug 31 4 Elul	WEDNESDAY Morning Minyan.....7:00 AM Torah For Lunch.....12:00 PM Zoom Evening Minyan...6:00 PM
		Aug 21 24 Av	SUNDAY Morning Minyan.....8:00 AM Zoom Evening Minyan...6:00 PM		

Candle Lighting Blessing

ברוך אתה ה' אלקינו מלך העולם אשר קדשנו במצותיו וצונו להדליק נר של שבת.

Barukh ata Adonai Eloheinu melekh ha'olam, asher kiddeshanu b'mitzvotav vetzivanu lehadlik ner shel Shabbat.

Shabbat Services will be held at CBS, 14200 Lamar and virtually

Weekday Morning Minyan will be held in person and via Zoom. Weekday Evening Minyan will be Zoom only.

To request a Zoom link:

<https://www.bethshalomkc.org/request-a-zoom-link/>



David M. Glickman
Senior Rabbi

Tahl Ben-Yehuda
Hazzan

Stefanie Williams
Executive Director

Judy Jacks Berman
Director, RFECEC

Dr. Ann Karty
President

Alan L. Cohen
Rabbi Emeritus

Rwitabhadra
(Ritz) Dasgupta
*Director of Marketing &
Communications*

The Congregation Beth Shalom Scroll (USPS531-420) is published monthly by Congregation Beth Shalom, 14200 Lamar, Overland Park, KS 66223. Annual Subscription \$24.00. Periodical Postage Paid in Kansas City, MO.

DATED MATERIAL

POSTMASTER: Send address changes to CONGREGATION BETH SHALOM SCROLL, 14200 Lamar, Overland Park, KS 66223.

Congregation Beth Shalom, an egalitarian Conservative synagogue, is a welcoming community of individuals from diverse backgrounds, strengthening connections with God, Torah and the Jewish people through communal commitment to prayer, study and acts of loving kindness.

August Highlights

Scroll Deadline

*Submit articles to the Administrative office.
August 7 for September*

Tisha B'Av: Aug 7

Torah For Lunch: Aug 5, 10, 17, 24

Tot Shabbat: Aug 13

Erev Tisha B'Av: Aug 6

Bar Mitzvah of Joshua Ari Snitz: Aug 20

Office 913-647-7279

MONDAY-THURSDAY 8:30 AM - 5 PM
FRIDAY 8:30 AM - 3 PM
Closed on Federal Holidays

Mt. Carmel Cemetery Hours 913-647-7279

MONDAY & WEDNESDAY 8:00 AM - 4:30 PM
TUESDAY & THURSDAY CLOSED
FRIDAY & SUNDAY 8:00 AM - 4:00 PM
SATURDAY CLOSED
NATIONAL HOLIDAYS 9:00 AM - 4:00 PM
JEWISH HOLIDAYS CLOSED

Exceptions: Thanksgiving, Christmas Day, New Year's Day & Easter

Sisterhood Gift Shop Hours

Gift Shop Schedule 913-647-7298

MONDAY & FRIDAY BY APPOINTMENT ONLY
TUESDAY 12:30 PM - 2:30 PM
WEDNESDAY 11:30 AM - 2:30 PM
THURSDAY 12:30 PM - 2:30 PM

Other Hours

EMAIL CONNIE SIMON AT STLTKC@GMAIL.COM

