



# The Scroll

## High Holidays 5782/2021

Join us for Sukkot & Simchat Torah

### THE GREAT Sukkah Schmoosze

Join us to celebrate Sukkot with sips of unique flavored adult beverages and conversations that connect us to Sukkot for all adults 21+. Conversations led by incredible leaders in the Kansas City & Jewish community. Everyone will get to try 3 sukkah sips, 1 ice cream, and four conversations during the program. All attendees will be entered into a raffle to win one of the easy-build sukkot being used for the program (non-alcoholic versions available of every sip offered)

**Sept 23rd, 2021**  
7:00pm-9:00pm, Beth Shalom Parking Lot  
RSVP REQUIRED Please email [blevine@bethshalomkc.org](mailto:blevine@bethshalomkc.org)

*"Open to the stars: Jews and space exploration" Led by David Zvi Kalman*

*"Hostess with the Mostess: How do we welcome differently abled guests at Shul?" Led by the owners of "The Golden Scoop"*

*"Gathering in the Sukkah: How do you create a Jewish family tradition" Led by Representative Dan Osman and Lindsey Osman*

*"Building Shelter: real estate boom" Led by Debbie Sosland, Edelman and Larry Myer, founder of Tikkan KC*

### Sukkot in Wonderland Tea Party

TRAVEL INTO THE WONDERLAND OF SUKKOT WHILE VISITING THE TEA PARTIES OF HAZZAN BEN-YEHUDA AND RABBI GLICKMAN.

COME IN YOUR SUKKOT BEST FOR TEA, SNACKS, AND A MAGICAL SUKKOT EXPERIENCE FOR GUESTS OF ALL AGES.

SIGN UPS AVAILABLE FOR SPECIFIC AGE GROUPS.

**SEPTEMBER 26TH 12:30-4:00PM**  
(YOU WILL SIGN UP FOR A SPECIFIC TIMESLOT)  
**RSVP FOR ADDRESSES**  
(MASKS REQUIRED FOR ALL)

Email [blevine@bethshalomkc.org](mailto:blevine@bethshalomkc.org) for link to RSVP

CONGREGATION BETH SHALOM'S GESHER FAMILY PROGRAMMING PRESENTS:

### Simchat Torah Theatre:

The Whole Story Told Too Quickly

A musical Torah telling celebrating the entire story of our people from Adam to Israel

**Wednesday Sept. 29th 6:30pm**

Located on the Beth Shalom Field (please bring folding chairs or blankets to sit on with your family)

Written by David Loewy of "Storahelling", performed by David Loewy, Hazzan Ben-Yehuda, and local Beth Shalom performers.

This program is made possible by the Polsky Family Foundation, Beth Shalom Sisterhood, and other generous donors.

**EMAIL BLEVINE@BETHSHALOMKC.ORG FOR MORE INFORMATION ABOUT THE EVENT AND TO RSVP**





## The Covered and the Revealed on Rosh HaShanah

The verse from psalms that introduces the evening amidah on Rosh HaShanah as well as our daytime kiddush is usually translated as follows: Blow the horn on the new moon, on the full moon for our feast day. (Psalms 81:4).

This translation, however is not completely accurate. The Hebrew says ba-kaseh l'yom chageinu. The Hebrew word "Kaseh" in this verse is better translated as "hidden." In other words: Blow the horn on the new moon, in the hiddenness of our festive day.

This verse is speaking to the hidden and concealed aspects of Rosh HaShanah. Rosh HaShanah is the only holiday of the year that is celebrated when the moon is completely hidden. Every other holiday is celebrated mid-month, while Rosh HaShanah is always at the darkest moment of the Hebrew month.

In addition to this, Tishrei, the month that starts with Rosh HaShanah, is the only month of the year that we do not publicly announce in synagogue the previous shabbat. With every other month we announce the new month loudly asking for God's blessing. The sages teach us that God Himself blesses the month of Tishrei, and humanity blesses each subsequent month.

**I would like to offer another aspect of the hidden aspect of Rosh HaShanah: sometimes God is most visible in the darkness. We can become in touch with God in the quiet and dark places.**

For many of us, though, we are now sick of the quiet and the dark. Our communication has been stunted by the conversations hobbled by Zoom. Our facial expressions have been obscured because of COVID's masks.

There can be intimacy with hiddenness and darkness. Lovers meet each other in the dark and in the secret spaces. But darkness and hiddenness allows bad things to fester as well. Emotional pain and trauma become more malignant when hidden. Abusive relationships spiral when they are not exposed. Fears can multiply upon themselves when left alone in the dark.

Though we may meet God in the concealed and dark spaces of Rosh HaShanah, let us allow this encounter with the Divine to inspire us to move from the concealed to the revealed.

**My prayer for all of us this year: let us have the courage to move ourselves and each other from the hidden space to the open place.**

The human capacity to hear, to listen, to speak with love, to truly see the other can create safety for bringing each other out of the darkest, hidden places into the light. Let this be the year of caring. The year of compassion. The year of listening. The year of comfort.

Shanah Tovah.

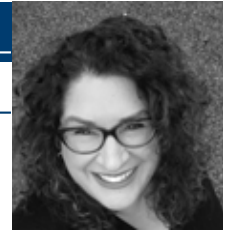
RABBI DAVID M. GLICKMAN  
dglickman@bethshalomkc.org

**Congregation Beth Shalom will be also be streaming the following services on the website**

*Traditional Service: Goldsmith Hall*  
*Multi-generational Instrumental Service: Lower Level Prayer Space*  
*Rimon Service: Lower Level Prayer Space*

To access the services, click on this link:  
<http://www.bethshalomkc.org/livestreaming/>





As high schoolers everywhere were holding on to the last few days of summer, sleeping in, hanging out with friends, enjoying minimal responsibility, I witnessed something that pulled at my heartstrings. For two weeks in a row, one of our board members signed up to be a greeter at our in-person Shabbat services. He brought his high school-aged daughter, and she embraced this role more than anyone I have ever seen. She and her Dad showed up early and would anxiously watch for a car to pull into the parking lot. She stood by the door, and timed it perfectly so she could skip (really – practically ran) out to meet each person and opened both sets of doors for them. She wished everyone a Shabbat Shalom with an enthusiasm and genuine happiness that made me smile each time. **She truly embodied the value of hachnassat orechim – receiving guests and making them feel welcome. I was reminded of the story of Abraham talking with God and he suddenly jumped up to greet three strangers who were approaching. Even talking with God was not as important as welcoming guests. For this teen to display this similar act filled me with so much hope. Reminded me how important it is to teach our children to think of others. Seeing the pride on her father’s face as he too greeted each person and handed them a siddur and chumash was pretty special as well.**

This also reminded me how amazingly important it is to SEE others. So, even at a time when many are scared to venture out, she provided comfort. She made our synagogue a refuge. As we enter the High Holidays, I am hoping that we can continue to embody this effort. That everyone who enters Goldsmith Hall, the Lower Level Prayer Space, one of our classrooms, one of our pavilions, or even one of our livestreams, will be greeted and welcomed as if there is nothing more important than sharing this time together. We want everyone to do what is best for them and for their families. We hope we are able to see you in person. And if we do, I promise, you will be greeted with the same enthusiasm that our wonderful teen displayed these past few weeks.

Wishing you a year filled with great health, happiness and a bit of the holy as well!!

Shana tovah u’metukah!

**STEFANIE MISLER WILLIAMS**  
EXECUTIVE DIRECTOR  
[swilliams@bethshalomkc.org](mailto:swilliams@bethshalomkc.org)

## High Holidays 5782/2021

### *Sukkot & Simchat Torah Service Schedule*

#### Sukkot

##### SUKKOT DAY 1 - TUESDAY, SEPTEMBER 21

10:00 am Traditional Service . . . . . Goldsmith Hall

##### SUKKOT DAY 2 - WEDNESDAY, SEPTEMBER 22

10:00 am Traditional Service . . . . . Goldsmith Hall

##### CHOL HAMOED DAY 1 - THURSDAY, SEPTEMBER 23

7:00 am Daily Minyan. . . . . Location TBD

7:00-9:00 pm The Great Sukkah Schmooze. . . . . Beth Shalom Parking Lot  
Adults 21+ . RSVPs required!

##### CHOL HAMOED DAY 2- FRIDAY, SEPTEMBER 24

7:00 am Daily Minyan. . . . . Location TBD

##### CHOL HAMOED DAY 3- SATURDAY SEPTEMBER 25

10:00 am Shabbat Services. . . . . Goldsmith Hall

##### CHOL HAMOED DAY 4- SUNDAY SEPTEMBER 26

8:00 am Daily Minyan. . . . . Goldsmith Hall

12:30-4:00 pm Gesher Sukkot In Wonderland Tea Party . . . . .

Sukkot of Rabbi David Glickman and Hazzan Tahl Ben-Yehuda. RSVPs required!

#### Hoshana Rabah

##### SUKKOT DAY 7 - MONDAY, SEPTEMBER 27

6:45 am Hoshana Rabah Services

Breakfast To-Go Sponsored by Laura Bratt To Follow

#### Shemini Atzeret

##### TUESDAY, SEPTEMBER 28

10:00 am Service w/Yizkor . . . . . Goldsmith Hall

#### Erev Simchat Torah

7:30 pm Ma’ariv followed by Hakafot. . . . . Goldsmith Hall

#### Simchat Torah

##### WEDNESDAY, SEPTEMBER 29

6:30 pm Gesher Simchat Torah Theatre. . . . . Beth Shalom Parking Lot  
RSVPs required!

7:30 pm Services with Hakafot. . . . . Goldsmith Hall  
Honoring our Simchat Torah honorees



## It's all about relationships

by HAZZAN TAHL BEN-YEHUDA  
[hazzantby@bethshalomkc.org](mailto:hazzantby@bethshalomkc.org)

As we move through the month of Elul and into Tishrei, we are navigating the time of reparation of the relationship between God and Israel, from the low point of Tisha B'Av, the 9th of Av, up through the rest of Av and into Elul, drawing ever closer to the fall holidays of Rosh HaShanah and Yom Kippur, when we lay our souls bare and draw near to our creator to recognize that we are, in the words of the poet, like clay in the hands of the potter, like silver in the hands of the smith, or like the flock tended to by a loving and caring shepherd.

We are in constant relationship with God, sometimes thanking, sometimes praising, sometimes questioning, ignoring or even denying, ... I once read a High Holidays reflection that said, you (Israel, you human) are always in relationship with Me (God). When you bless Me, you are in relationship with me. When you curse Me, you are in relationship with me. And when you are not talking to Me, when you doubt Me or are angry or even reject Me, you are still in relationship with Me.

And while some of us define Judaism as this group of people who have been in a particular relationship with God over five millenia, we must also define Judaism as a group of people who have been in deep relationship with each other and with God over five millenia. Regardless, what defines us as a people are these special relationships.

We seek out the people and the places, the communities that offer us relationships that fulfill us. I am grateful that you are Beth Shalom, that we together are working to create a welcoming, caring community where we learn, celebrate and experience every facet of Judaism together. I hope that in the coming weeks of holidays, we have a chance to wish each other health and joy for the coming year in person or on screen, and that soon, God-willing, we will enjoy each other's company as we sing, learn, and even debate together. Shanah tovah u'metukah!

## Rose Family Early Childhood Education Center

### Summer Camp!

by JUDY JACKS BERMAN | DIRECTOR  
[jjb@bethshalomkc.org](mailto:jjb@bethshalomkc.org) | 913-647-7287

Camp was so much fun this summer! We had a therapy dog teach us dog safety. We had storm tracker and Meteorologist Jeff Penner from Channel 41 teach us about weather.

Interesting fact: Jeff Penner had his Bar Mitzvah and grew up at Beth Shalom. Laughing Matters, Funky Mama and Paramount Ponies petting zoo rounded out our activities. Shabbat singing every Friday was a wonderful treat! And now we are gearing up for a great school year. Wishing everyone a Shana Tova Umetuka, a sweet happy new year filled with good health and Shalom.



## When all else fails, try gratitude



by JASON KRAKOW | PRESIDENT

As we head into our second COVID-19 impacted High Holiday season, I hope you will join me in making the choice to be grateful. There is nothing quite like the power of gratitude. It can simultaneously be the simplest emotion to regularly express, and it can be the most difficult emotion to summon in trying times.

Every day, we discharge simple “thank you’s” at the slightest routine activity. People opening a door, handing us our coffee, wrapping up our groceries...all get a quick thank you.

A global pandemic - with all the threats to our health and massive disruptions to daily life - is, to say the least, a harder time to summon deep and meaningful gratitude. And, I certainly admit, it wasn't my first instinct or an easy hump to get over. It happened sometime in the dark, before sunrise minutes, logging on to a Zoom minyan in March 2020. Flipping through the digital siddur on my iPad, it jumped out at me – the first words we are supposed to say as we open our eyes – Modeh Ani – Grateful am I.

If it's important enough to start each day with “grateful” being our first word, then how much more so that we start this new year with gratitude. As we look forward to our communal future, bright with opportunity, grateful am I for the leaders who built this community, for our incredibly dedicated staff, for our inspiring clergy, for our motivated volunteers, and to each of our members who form our community today.

Within our sight is not only a groundbreaking for a new sacred space, but also a re-energized commitment to our children's education at The Polsky Religious School, an exceptional Rose Family Early Childhood Preschool, new melodies emerging from our Rising Song group, a commitment to all of our neighbors through our newly formed Social Justice Committee, meaningful adult learning through our weekly Torah classes, creative and dynamic programming around Sukkot, Hanukkah and Purim, and so much more.

So, as we each find our way through this year's High Holidays and connect to our synagogue community in-person or online, and even with all of the loss we've experienced over the last 18 months, it's gratitude that has me looking forward with positivity for our future.

The officers and the board of directors, in partnership with our staff and clergy, remain focused on bringing us all together in better and stronger ways than ever before, When we emerge from the threats of this virus, I will be even more grateful that we came through it together.

Shana Tovah U'metukah.

## Hazzan's Contract Renewal

In accordance with the bylaws of Congregation Beth Shalom this notice is required to be prominently placed in The Scroll when the contract of a member of the professional staff is coming up for renewal. Please be advised that the contract of Hazzan Tahl Ben-Yehuda is now up for renewal.

Beth Shalom members may address any comments to Jason Krakow, Congregation Beth Shalom, President, 14200 Lamar Ave., Overland Park, KS 66223 or email your comments regarding Hazzan Ben-Yehuda to: [atjkrakowks@gmail.com](mailto:atjkrakowks@gmail.com). These comments must be received before October 15.

## High Holiday Food Drive

2021 HIGH HOLIDAY FOOD DRIVE  
September 1-30

## Share what you CAN!

1. Fill a bag with groceries for several healthy meals.
2. **Options for delivering donations:**
  - Check with your synagogue for return dates.
  - Drop off in the JFS barrel lobby of the Jewish Community Campus
  - Deliver during drive-up JFS Food Drives: 5-6 p.m., Sept. 13 at JFS Bookside East, 475 E. 63rd St. OR 10-noon, Sept. 19 at Jewish Community Campus
3. **Don't want to fill a bag?** Shop "JFS Food Pantry" list on Amazon or make a financial contribution at [jfskc.org](http://jfskc.org)

**Top 5 most-needed items:** tomato products, canned fruit, food/toilet, toilet paper, and paper towels.





# Better Together Save The Date

## **Orientation In The Park**

Sunday, Aug 29, 3-4:30 pm  
Gezer Park

## **Sukkot In Wonderland**

Sunday, Sept 26  
Better Together families in Rabbi  
and Hazzan's Sukkot

## **Havdalah at Hazzan's Home**

Saturday, Nov 13, 6:00 pm  
Fish Tank Tour, Havdalah, and Pizza

## **Rick Recht Concert+Macabee Madness Hanukkah Party**

Sunday, Dec 5, 12-2:00 pm,  
Goldsmith Hall

## **Friday Night Dinner**

January 14, 5:00 pm, before  
Shabbat begins

## **Mezuzot at the Pottery Cafe**

Sunday, Feb 27

## **Mishloach Manot Factory**

Sunday, March 13, Congregation  
Beth Shalom

## **Mitzvah Garden Morning**

Spring - Date TBD

## **End Of Year Better Together BBQ Picnic**

Sunday, May 29, Gezer Park,  
at lunchtime

**Better Together** is an investment by Beth Shalom in families having joyful, meaningful Jewish Living Experiences at one of the most critical moments in raising children. **Better Together** is open to any Beth Shalom member family with at least one child in Kindergarten or First Grade.

To RSVP or request more information, email Trinity at [tlawson@bethshalomkc.org](mailto:tlawson@bethshalomkc.org)



## Of Blessed Memory

We express condolences to our Beth Shalom Members, their Families and Friends.

Michael Katz, ז"ל AUG 8 – 30 AV

### PLAQUES HAVE BEEN DEDICATED *In Memory Of...*

*Yahrtzeits* Join us for morning or evening minyan to say Kaddish for your loved one. See service schedule, page 11.

#### SEPT 1-24 ELUL

Eva Copeland  
Abraham Frost  
Ben Gordon  
Lillian Kanter  
Gus Minkin  
Norman Polsky  
Sherwin Salasche  
Isaac Vogel

#### SEPT 2-25 ELUL

Esther Cohen  
Albert Diamond  
Jacob Gilgus  
Martie Greenberg  
Blanche Lerner  
Sanford Molos  
Samuel

Segelbohm  
Celia Sher  
Sylvan Siegler

#### SEPT 3-26 ELUL

Saul Bitner  
Lena Glazer  
Max Hoffman  
Millie Levy  
Louis Sachs  
Leo Schleifstein  
Coralee Snyder  
Bailey Taxman  
Daniel Tucker

#### SEPT 4-27 ELUL

Emil Barsky  
Mayme Becker  
Edwin Chambers  
Arthur Frank  
Rose Lieber  
Rebecca Louis  
Rose Milens  
Frank Soltz  
William Stein  
Ida Swerdlow  
Dolores Wedlan

#### SEPT 5-28 ELUL

Jenny Blum  
Morris Cohen  
Karl Copelman  
Joe Dunn  
Michael Fingersh  
Melissa  
Goldenberg  
Maurice Horowitz  
Harry Kisluk  
Blanche Marks  
David Parelman  
Arnold Parnes  
Harry Stevens  
Sarah Summers  
Bernard Unger  
Esther Weiner

#### SEPT 6-29 ELUL

David (Tim)  
Blond  
Allene Carroll  
Sol Dennis  
Sidney Erdman  
Paul Gilgus  
Leon Grossman  
Rose Kosovitz  
Harry Oshiver  
Samuel Oshiver  
Ralph Rosenberg  
Irving Schoen  
Robert Seiffer  
Rae Silberman  
Mezeh Viner

#### SEPT 7-1 TISHREI

Bessie Berman  
Samuel Bigus  
Annie Bortnick  
Daniel Brenner  
Berl Chaba  
Fayge Chaba  
Paul Cohen  
Arthur Epstein  
Dora Finkelstein  
Frances Fogel  
Akiba Garowitz  
Eli Gershon  
Harry Gilbert  
Arlene Grossman  
Pearl Hoffman  
Lipman Kopinsky  
Moses Kopinsky  
Sascha Kopinsky  
Toibe Kopinsky  
Zelig Kopinsky  
Mamie Kraff  
David Levin  
Jeanette Levine  
J. David Pittell  
Hannah Present  
Ruben Seigel  
Fannie Shapiro  
Dora Stanborn  
Morton Swartz

#### SEPT 8-2 TISHREI

Tammie Fingersh  
Morris Hans  
Paul Jaben  
Marjorie Kantor  
Marlene Krakow  
Zelda Kross  
Ella Lustig  
Milton Malamud  
Irving Millstein  
Joseph Oshiver  
Jerry Penzner  
Thelma  
Rosenberg  
Frank Schlozman  
Louis Silberg  
Lena Sorkin

#### SEPT 9-3 TISHREI

Sarah Behrman  
Dora Dekro  
Joseph Dekro  
Isaac Ducov  
Jennie Gorman  
Morris Kort  
Samuel Kort  
Morris Litvien  
Max Navran  
Gifla Posmantier  
Anna Sandhaus  
Juliette Seiden  
Lazarus Smith  
Joe Wolberg

#### SEPT 10-4 TISHREI

Anne Baum  
Max Berman  
Ida Devins  
Liba Falus  
Sol Ginsberg  
Cecil Kaminsky  
Harry Kaplan  
Melvin Krashin  
Esther Levine  
Myer Lieberman  
Etta Magazine  
Sidney Magazine  
Jean Robin  
Khaya Schuster  
Sylvia Traxler

#### SEPT 11-5 TISHREI

Rita Bayless  
Jack Bohm  
Philip Herowitz  
Jacob Hyman  
Herman Koch  
Rose Rapaport  
Ben Rosenberg  
Joseph Singmon  
Anna Stolov  
Morris Traxler

#### SEPT 12-6 TISHREI

Esther Becker  
Evelyn Brown  
Sara Davidow  
Rose Goldberg  
Minnie Gordon  
Marian  
Hermanson  
Sarah Myron  
George Newberg  
Dorothy Novorr  
Sadye Rubinfire  
Albert Saver  
Abraham  
Steinzeig  
Herman Tweed  
Isabel Viner

#### SEPT 13-7 TISHREI

Lisa Barash  
Nellie Coleman  
Aida Gilgore  
Fannie Karosen  
Anna Koppel  
Sherburne Krieger  
William Jack  
Newton  
Frieda Schlein  
Jack Shear  
Gertrude Weneck

#### SEPT 14-8 TISHREI

William Berkowitz  
Benjamin Brand  
Minnie Frischer  
Golda House  
Flora Pelofsky  
Joe Penner  
Joe Rubin

#### SEPT 15-9 TISHREI

Milton Adler  
Esther Gibian  
Rebecca  
Grossman  
Baruch Harding  
Miriam Harding  
Ida Katzman  
Samuel Kopel  
Melba Levine  
Sol Lipsey  
Sam Marcus  
Eihel Markowitz  
Jacob Risburd  
Louis Rosenberg

#### SEPT 16-10 TISHREI

Samuel  
Brockman  
Akiba Byers  
Velie Dubinsky  
Nettie Feinberg  
Meyer Finkelstein  
Sarah Gardesky  
Eli Grossman  
Elsa Gundelfinger  
Tiberius Klausner  
Isaak Levine  
Harold Marks  
Joseph  
Moskowitz  
Edith Pinsky  
Harry Rubenstein  
Prywa  
Salzenstein  
Freidel Schwartz  
Jacob Schwartz  
Nathan Schwartz  
Sashe Schwartz

Israel Weinstein  
Nessy Weinstein

#### SEPT 17-11 TISHREI

Louis Cumonow  
Edith Duni  
Edna Ginsberg  
Joseph Greenberg  
Morris Isenberg  
Bernard Kessler  
Boris Kleiman  
Sandra Marder  
Theresa Meyer  
Robert Rapaport  
Sarah Salkind  
Fred Schechter  
Morris Shaffer  
Abraham Starr  
Harriette Tivin

#### SEPT 18-12 TISHREI

Harry Abend  
Benjamin Apple  
Harry Aven  
Wolf Binkowitz  
Pesha Hoffman  
Leah Mack  
Jean Price  
Alfred Rafsky  
Joe Rose  
Rebecca Wexler  
Jacob Witschner  
Mollye Zinn

#### SEPT 19-13 TISHREI

Peter Bayzman  
Philip Byer  
Dora Galitzky  
Charlotte Gilbert  
Samuel  
Lieberston  
Daniel Lumian  
Sam Nagel  
Harry Pack  
Dora Pakula  
Meyer Pilz  
Chaim  
Posmantier  
Fannie Spellman

#### SEPT 20-14 TISHREI

Samuel Bordy  
Louis Goodman  
David Kantor  
Beatrice Katz  
Mark Marks  
Harris Naster  
Dorothy Orren  
Ethel Rogers  
Dorothy Ross  
Samuel  
Tempofsky

Sam Yagan

#### SEPT 21-15 TISHREI

Bennie Balter  
Bessie Becker  
Blanche  
Bernbaum  
Sarah Bisman  
Anna Ducov  
Blanche Lipari  
Barnard Marks  
Rose Rositsky  
Samuel Stein  
Jennie Steinberg  
Yente Weiner  
Hyman Zeldin

#### SEPT 22-16 TISHREI

Phil Aks  
Max Asotsky  
Sarah Brown  
Ida Dunn  
Bela Falus  
Jerry Ginden  
Anita Goodman  
Irene Greenstein  
Peretz Hershman  
Sonya Hershman  
Soreh Kuznecki  
Sam Millman  
Israel Mittelman  
Isidore Saver

#### SEPT 23-17 TISHREI

Michael  
Eisenberg  
Esther  
Goldenberg  
Michael Goldstein  
Abe Levine  
Dorothy Litwin  
Irwin Mushkin  
Isaac Nelson  
Freda Peltzman  
Byron Ross  
Fanny Stern  
Esther Wolfson

#### SEPT 24-18 TISHREI

Rebecca Bobier  
Morris Bobrecker  
Abraham Cohn  
Sarah Dennis  
Moses Eisemann  
Samuel Hoffman  
Mark Marks  
Daniel Marcuvitz

#### SEPT 25-19 TISHREI

Edith Caspari  
Rae Gold

Ida Schoen  
Sam Statland  
Lewis White

#### SEPT 26-20 TISHREI

Rose Goldstein  
Sophia Steinzeig  
Robert Wayne

#### SEPT 27-21 TISHREI

Aleck Bratt  
Evan Bratt  
Helen Kars  
Sam Kaufman  
Frieda Lachs  
Philip Minkin  
Simon Penner  
Ben Planzer  
Sam Rogell

#### SEPT 28-22 TISHREI

Goldie Asner  
Joseph Katz  
Bessie Katzeff  
Sadye Rubenstein  
Joseph Tonkin  
Helen Weinstein

#### SEPT 29-23 TISHREI

Tina Arenson  
Elizabeth Cohen  
Arthur Florman  
Rosalind  
Ginsburg

Sherman Glazer  
Al Greenblot  
Geraldine Gross  
Belle Kaplan  
Joe Katz  
Paul Lerner  
Abraham Merker  
Ruben Mitz  
Hanna Sukiennik  
Max Tonkin

#### SEPT 30-24 TISHREI

Max Kaufman  
Joseph Kay  
Joseph Krashin  
Rachel Leibowitz  
Tillie Lerner  
Maurice Luchen  
Lena Tweed



Contributions through August 5 are listed below. Thank you for thinking of us.

**BETH SHALOM GENERAL FUND**

*In Honor of*  
 Alan Edelman & Debbie Sosland-Edelman's New Grandson  
 Naomi Kauffman  
*In Honor of*  
 Debra & Ben Rubin's Anniversary  
 Alice Lewinsohn  
*In Memory of*  
 Bill & Marge Schlosberg's 75th Birthdays  
 Marian Kaplan  
*In Memory of*  
 Bess Byers  
 Ronald & Adrainne Greenberg  
*In Memory of*  
 Naomi Chilton  
 Jonathan & Ellen Chilton  
*In Memory of*  
 Barbara Enslein  
 Jerald Enslein  
*In Memory of*  
 Gertie Epstein  
 Janet Provines Agron  
*In Memory of*  
 Isak Federman  
 Arthur & Diane Federman  
*In Memory of*  
 Dora Hellman  
 Rae Cohen  
*In Memory of*  
 Don Intrater  
 William & Lynn Intrater  
*In Memory of*  
 Ida Joseph  
 Shirley Beiser  
*In Memory of*  
 Sam Kaswan  
 Louis & Marilyn Kessler  
*In Memory of*  
 Amos Leitner  
 Phyllis Leitner  
*In Memory of*  
 Annie Levin  
 Stanley & Isabel Levin

*In Memory of*  
 Rae Lieberman  
 Rosalyn Burnstein  
*In Memory of*  
 Paulina Muller  
 Max & Charlene Muller  
*In Memory of*  
 Irving Nasaw  
 David Nasaw  
*In Memory of*  
 Beverly Newman  
 Arthur & Diane Federman  
 Lloyd & Jacqueline Stahl  
 Hanan & Natalie Hammer  
*In Memory of*  
 Sidney Pakula  
 Lawrence Pakula  
*In Memory of*  
 Louis Pelofsky  
 Joel & Brenda Pelofsky  
*In Memory of*  
 Louis Pinsky  
 John Goldberg & Marla Brockman  
*In Memory of*  
 Renetta Prebluda  
 Jonathan & Ellen Chilton  
*In Memory of*  
 Stan Rostov  
 Irvin Belzer & Sue Mcord-Belzer  
*In Memory of*  
 Jerome Schneider  
 Alan Schneider  
*In Memory of*  
 Harry Shapiro  
 Marietta Dunn  
*In Memory of*  
 Morris Singer  
 Nathan Rosen  
*In Memory of*  
 Sadie Tonopolsky  
 Rae Cohen  
*In Memory of*  
 Norman Weinstein  
 Harold Weinstein  
 Sam Weinstein

**BETH SHALOM LIBRARY FUND**

*In Memory of*  
 Bev Newman  
 Herbert & Barbara Simon

**CEMETERY MAINTENANCE FUND**

*In Memory of*  
 Annette Bloch  
 Stuart Bodker & Tensy Marcos-Bodker  
*In Memory of*  
 Al & Janice Klugman  
 Edward & Anne Klugman

**GALE & MAXINE GROSSMAN RELIGIOUS SCHOOL**

*In Memory of*  
 Charles Bass  
 Maxine Grossman

**GERSHON HADAS SCHOLARSHIP FUND**

*In Memory of*  
 Ida Steinberg  
 Michael Green

**HAZZAN BEN-YEHUDA'S DISCRETIONARY FUND**

*In Appreciation of*  
 Hazzan Tahl Ben-Yehuda  
 Stewart & Esther Stein

**JACOB H. & ROSE LEVINE TEACHER DEVELOPMENT FUND**

*In Memory of*  
 Beverly Newman  
 Rosalyn Burnstein  
 Harriett Charno  
 Rita Cortés & Mary McLean  
 Eilen Edelman  
 Jackye Goldberg

Larry & Linda Lessner  
 Scott & Carla Oppenheimer  
 Florence Pack  
 Louis Pollina & Family  
 David & Lindsay Schneider  
 Rodd & Martha Staker  
 Jettie Stempleman  
 Marshall & Hope Talbot  
 Joe & Fran Wolf  
 Richard & Barbara Atlas  
 Alan Broxterman  
 Patrick & Janice Cabbage  
 Steve & Milisa Flekier  
 Martha Gershun & Don Goldman  
 Rene Goldman  
 Mitch & Lisa Hamburg  
 Elliott & Katharine Hollub  
 Brita Horowitz  
 Donna Joseph  
 Kurt & Stephanie Kavanaugh  
 Carla Klausner  
 Kenneth & Sandra Lerner  
 Alice Lewinsohn  
 Rodney & Gerre Minkin  
 Robert & Barbara Palan  
 Alicia Schoenwald  
 Rita Shapiro  
 Merna Siegler  
 Harriet Siess  
 Norton & Irene Starr  
 David & Susan Swift  
 Shirley Unell

**KIDDUSH FUND**

*In Honor of*  
 Bill & Marge Schlosberg's 75th Birthdays  
 Allan & Nancy Reichman  
 Merna Siegler

*In Memory of*  
 Ben Bell  
 William & Joyce Shapiro  
*In Memory of*  
 Esther Goldstein  
 Marvin & Carol Goldstein  
*In Memory of*  
 Beverly Newman  
 Jeffrey & Karen Gerson  
*In Memory of*  
 Joe Posner  
 Marvin & Carol Goldstein  
*In Memory of*  
 Sol Posner  
 Marvin & Carol Goldstein

**MARCIA EVELOFF LECHEM FUND**

*In Honor of*  
 Barbara & Bernard Birnbaum's 70th Anniversary  
 Robert & Cindy Daniels  
*In Honor of*  
 Randy Block's Speedy Recovery  
 Janey Goodman  
*In Memory of*  
 Leibert Birnbaum  
 Gary & Patti Friedman  
*In Memory of*  
 Bessie & Joe Brenner  
 Dolores Sosnow  
*In Memory of*  
 Clarice Greenberg  
 Jeffrey & Wendy Sitzmann

*In Memory of*  
 Sadye Lerner  
 Alan & Tina Chapman  
*In Memory of*  
 Serena Tabolsky  
 Eisman  
 Marshall & Hope Talbot

**MERNA & SYLVAN SIEGLER FUND FOR JEWISH CAMPING**

*In Honor of*  
 Merna Siegler's 95th Birthday  
 Richard & Charlotte Brockman

**PRAYER BOOK FUND**

*In Memory of*  
 Dr. Edward Haith  
 Marvin & Carol Goldstein  
*In Memory of*  
 Lynn Irwin Raskin  
 Marvin & Carol Goldstein

**PRAYER WORKS**

*In Memory of*  
 Dr. Edward Haith  
 Shirley Hurst

**RABBI GLICKMAN'S DISCRETIONARY FUND**

*In Appreciation of*  
 Rabbi David Glickman  
 Stewart & Esther Stein  
*In Memory of*  
 Beverly Newman  
 David Gale & Gina Kaiser  
 Pamela Rosenberg  
*In Memory of*  
 Clara Ommerman  
 Maurice Ommerman

**ROSE FAMILY EARLY CHILDHOOD EDUCATION CENTER**

*In Memory of*  
 Judy Weinberg  
 Douglas & Shana Enns  
 Mrs. Blackman & Mr. Blackman





Contributions through August 5 are listed below. Thank you for thinking of us.

**ROSE S. LEVINE & DORIS L. FLAM ARTS & EDUCATION FUND**

*In Memory of*  
Beverly Newman  
Roger & Berenice Haberman

*In Memory of*  
Robert Shapiro  
Carla Klausner

**SACRED SPACE CAMPAIGN 2021**

*In Honor of*  
Kendra Baker  
Becoming a Board Certified Physician

Ronald & Dierdre Baker

*In Memory of*  
Jerome Schrader  
Jeff & Carol Katz

**SECURITY FUND**

*In Memory of*  
Beverly Newman  
Jeff & Carol Katz  
Stein Family Youth Fund

*In Memory of*  
Beverly Newman  
Stewart & Esther Stein

**Youth & Family Programming**

by BECCA LEVINE | DIRECTOR OF YOUTH & FAMILY PROGRAMMING  
[blevine@bethshalomkc.org](mailto:blevine@bethshalomkc.org)

**Gesher Family Programming**

Gesher Family Programming are community building events geared for families with kids in kindergarten through 8th grade but open to all. RSVP's will come out before each individual program. These programs are made possible thanks to the Polsky Family Foundation.

Questions? Please email our Director of Youth & Family Programming Becca Levine at [blevine@bethshalomkc.org](mailto:blevine@bethshalomkc.org)

SEPTEMBER	OCTOBER	NOVEMBER	
<p>Sukkot in Wonderland</p> <p>Sept 26th 2:00pm-4:00pm Rabbi &amp; Hazzan's Backyards</p> <p>Simchat Torah Theatre</p> <p>Sept 29th 6:30pm-8:00pm Beth Shalom Grass Field</p>	<p>Two by Two Deanna Rose family scavenger hunt</p> <p>Oct 17th 1pm-4pm Deanna Rose</p>	<p>Bar K Bark Mitzvah for all Beth Shalom families and their dogs</p> <p>Nov 7th 2pm-5pm Bar K</p>	
DECEMBER	JANUARY	FEBRUARY	MARCH
<p>Rick Recht Concert &amp; Maccabee Madness Hanukkah Party</p> <p>Dec 5th 12pm-2pm Goldsmith Hall</p>	<p>Tu B'Shevat Succulent Planting Workshop</p> <p>Jan 11th 7pm-8pm (Location to come)</p>	<p>Village Shalom Shabbat Service Volunteering</p> <p>Feb 25th 4pm-6pm Village Shalom</p>	<p>KCUSY Purim Carnival</p> <p>(Date to come)</p>
APRIL	MAY	<p>For timing, dates, RSVP, and individual program information please visit <a href="http://www.bethshalomkc.org">www.bethshalomkc.org</a></p>	
<p>Beth Shalom joins the JCC for Jewish Night at Kauffman Stadium, Royals Game and Kosher Tailgate</p> <p>(Date could be April-June)</p>	<p>Mitzvah May at the Kansas City Mitzvah Garden</p> <p>(Date to come)</p>		

Bar Mitzvah

*Benjamin Rosenthal  
September 4 / 27 Elul*

Benjamin (Ben) Rosenthal is the son of Janna and Daniel Rosenthal. He has an older sister, Emma. He is the grandson of Susan & Ernest Rosenthal of Overland Park, KS, Susan & Kenneth Cohn of Arlington, VA and Theresa and William Schuster of Aiken, SC. Ben attends the Hyman Brand Hebrew Academy. He enjoys playing soccer, basketball, golf, video games, traveling, and spending time with family. Despite not having a pet of his own, he also has a real love for animals. One of his favorite things to do is spend time with our neighbors and friend's pets. Ben's Bar Mitzvah project involved raising money for Wayside Waifs of Kansas City, a no kill animal shelter.



Bat Mitzvah



*Ayla Liana Williams  
October 2/ 26 Tishrei*

Ayla Liana Williams is the daughter of Stefanie Williams and Ryan Williams and is the sister of Amos Williams. She is the granddaughter of Arlene and Jeff Misler, and Christy and Ronnie Williams, of Alva, FL, and the great granddaughter of Gigi Betty Misler, of Cary, NC. Ayla attends Hyman Brand Hebrew Academy. Ayla loves soccer, basketball and art. For her B'nei Mitzvah project, she is working with Unleashed to provide toys, food and items needed to make the animals' stay there better. Relatives and friends are invited to worship with the family. There will be limited in-person attendance, and anyone may join online at [bethshalomkc.org/livestreaming](http://bethshalomkc.org/livestreaming).

September Anniversaries

DAY	YEARS	DAY	YEARS		
1	Steven & Stacy Brown . . . . .	19	6	Gregory & Susan Azorsky . . . . .	34
1	Michael & Anne Jacobs . . . . .	47	6	Lewis & Carol Berey . . . . .	56
1	Jeffrey & Linda Sander . . . . .	36	6	Scott & Debra Davis . . . . .	34
1	Richard & Connie Simon . . . . .	30	6	Abraham & Marlene Kopec . . . . .	61
2	Michael & Renana Abrams . . . . .	31	6	Shelly & Alex Malyarov . . . . .	12
2	Neil & Alexis Miller . . . . .	9	6	Jay & Erica Reich . . . . .	12
2	Eran & Yael Re'em . . . . .	22	7	Daniel & Janna Rosenthal . . . . .	18
3	Seth & Robyn Freiden . . . . .	15	10	Michael & Samyra Marks . . . . .	54
3	Phillip & Barbara Hodes . . . . .	54	10	Aaron & Jennifer Spiegel . . . . .	20
3	Kurt & Stephanie Kavanaugh . . . . .	32	11	Elliott & Katharine Hollub . . . . .	61
3	Larry & Linda Lessner . . . . .	43	12	Scott & Debra Goldstein . . . . .	17
4	Roberta & Sam Goller . . . . .	10	16	Tony & Kelly Shapiro . . . . .	23
4	Joshua & Leah Langert . . . . .	10	17	David Gale & Gina Kaiser . . . . .	32
4	Steven & Judith Sherry . . . . .	61	19	Steven & Joan Israelite . . . . .	57
4	Sarah & Daniel Stras . . . . .	5	19	Stan & Mary Weiner . . . . .	51
4	Jonathan Gavra & Jennifer Davis . . . . .	5	20	Richard & Lisa Hurst . . . . .	29
5	Joseph & Alyson Dieker . . . . .	6	21	Jeffrey & Valerie Gasser . . . . .	35
5	Michael & Francine Farkas . . . . .	39	27	Leonard & Elizabeth Hershman . . . . .	51
5	Allen & Gail Gutovitz . . . . .	50	27	Max & Julie Soloman . . . . .	21

Congregation Events – See each department for its activities.

RFECEC = Rose Family Early Childhood Education Center  
PRS = Polsky Religious School

Sept 1 24 Elul	WEDNESDAY Zoom Morning Minyan...7:00 AM Zoom Evening Minyan...6:00 PM	Sept 11 4 Tishrei	SATURDAY Shabbat Morning Service...10:00 AM <b>7:06 PM</b> Havdalah on FB Live	Sept 21 15 Tishrei	TUESDAY Sukkot Day 1 Admin Offices closed Traditional Service...10:00 AM
Sept 2 25 Elul	THURSDAY Zoom Morning Minyan...7:00 AM Zoom Evening Minyan...6:00 PM	Sept 12 5 Tishrei	SUNDAY Zoom Morning Minyan...8:00 AM The Lost Year: Service of Remembrance .....5:00 PM	Sept 22 16 Tishrei	WEDNESDAY Sukkot Day 2 Admin Offices closed Traditional Service...10:00 AM
Sept 3 26 Elul	FRIDAY Zoom Morning Minyan...7:00 AM Connect for Shabbat....6:00 PM	Sept 13 6 Tishrei	MONDAY Zoom Morning Minyan...7:00 AM Zoom Evening Minyan...6:00 PM	Sept 23 17 Tishrei	THURSDAY Chol HaMoed Day 1 Zoom Morning Minyan...7:00 AM
Sept 4 27 Elul	SATURDAY Library Minyan.....9:15 AM Bar Mitzvah of Benjamin Rosenthal.. .....10:00 AM Shabbat Morning Service...10:00 AM <b>8:26 PM</b> Havdalah on FB Live	Sept 14 7 Tishrei	TUESDAY Zoom Morning Minyan...7:00 AM Zoom Evening Minyan...6:00 PM	Sept 24 18 Tishrei	FRIDAY Chol HaMoed Day 2 Zoom Morning Minyan...7:00 AM Connect for Shabbat....6:00 PM
Sept 5 28 Elul	SUNDAY Zoom Morning Minyan ... 8:00 AM Zoom Evening Minyan.....6:00 PM	Sept 15 8 Tishrei	WEDNESDAY Kol Nidrei Admin Offices close at noon Traditional Service....6:00 PM Multi-generational Service...6:30 PM	Sept 25 19 Tishrei	SATURDAY Chol HaMoed Day 3 Library Minyan.....9:15 AM Shabbat Morning Service...10:00 AM <b>7:52 PM</b> Havdalah on FB Live
Sept 6 29 Elul	MONDAY Erev Rosh HaShanah/Labor Day Admin Offices closed Zoom Morning Minyan...7:00 AM Minchah/Ma'ariv .....6:00 PM	Sept 16 9 Tishrei	THURSDAY Yom Kippur Admin Offices closed Traditional Service.....9:00 AM-12:00 PM Preschool Family Service...9:00-9:40 AM Family Education Experience .. 10:00 -11:00 am Multi-generational Instrumental Service..... ..... 10:00 am -12:00 pm Pavilion Service.....11:00 AM-12:00 PM Minchah Service..... 5:00 PM Neilah Service..... 6:00 PM Havdalah & Shofar Blast.... 6:00 PM	Sept 26 20 Tishrei	SUNDAY Chol HaMoed Day 4 Zoom Morning Minyan...8:00 AM Connect for Shabbat.....6:00 PM
Sept 7 1 Tishrei	TUESDAY Rosh HaShanah Day 1 Admin Offices closed Traditional Service.....9:00 AM-12:00 PM Preschool Family Service...9:00-9:40 AM Family Education Experience .. 10:00 -11:00 am Multi-generational Instrumental Service..... ..... 10:00 am -12:00 pm Pavilion Service.....11:00 AM-12:00 PM Community Tashlikh Service.....Regency by the Lake...4:00-5:00 pm Traditional Service.....6:00 PM	Sept 17 10 Tishrei	FRIDAY Zoom Morning Minyan...7:00 AM Connect for Shabbat.....6:00 PM	Sept 27 21 Tishrei	MONDAY Hoshana Rabah Breakfast Sponsored by Laura Bratt.....6:45 AM Admin Offices closes at noon Services to Follow
Sept 8 2 Tishrei	WEDNESDAY Rosh HaShanah Day 2 Admin Offices closed Traditional Service.....9:00 AM-12:00 PM Preschool Family Service...9:00-9:40 AM Rimon Service..... 10:00 AM -12:00 PM Pavilion Service.....11:00 AM-12:00 PM	Sept 18 11 Tishrei	SATURDAY Library Minyan.....9:15 AM Shabbat Morning Service...10:00 AM <b>8:04 PM</b> Havdalah on FB Live	Sept 28 22 Tishrei	TUESDAY Shemini Atzeret/Erev Simchat Torah Admin Offices closed Services w/Yizkor.... 10:00 AM Ma'ariv followed by Hakafot....7:30 PM
Sept 9 2 Tishrei	THURSDAY Zoom Morning Minyan...7:00 AM Zoom Evening Minyan...6:00 PM	Sept 19 12 Tishrei	SUNDAY Zoom Morning Minyan...8:00 AM Connect for Shabbat.....6:00 PM	Sept 29 23 Tishrei	WEDNESDAY Simchat Torah Admin Offices closed Services with Hakafot. . . 10:00 AM Honoring our Simchat Torah honorees
Sept 10 3 Tishrei	FRIDAY Zoom Morning Minyan...7:00 AM Connect for Shabbat.... 6:00 PM	Sept 20 14 Tishrei	MONDAY Erev Sukkot Zoom Morning Minyan...7:00 AM Admin Offices closes at noon Zoom Evening Minyan...6:00 PM	Sept 30 24 Tishrei	THURSDAY Zoom Morning Minyan...7:00 AM Zoom Evening Minyan...6:00 PM

## Candle Lighting Blessing

ברוך אתה ה' אלקינו מלך העולם אשר קדשנו במצותיו וצננו להדליק נר של שבת.

*Barukh ata Adonai Eloheinu melekh ha'olam, asher kiddeshanu b'mitzvotav vetzivanu lehadlik ner shel Shabbat.*

Shabbat Services will be held at CBS, 14200 Lamar and virtually

Weekday Minyan will be held virtually via Zoom

To request a Zoom link:

<https://www.bethshalomkc.org/request-a-zoom-link/>

David M. Glickman  
*Senior Rabbi*

Hazzan Tahl Ben-Yehuda  
*Director of Congregational Learning*

Stefanie Williams  
*Executive Director*

Judy Jacks Berman  
*Director, RFECEC*

Jason Krakow  
*President*

Alan L. Cohen  
*Rabbi Emeritus*

Rwitabhadrā  
(Ritz) Dasgupta  
*Director of Marketing & Communications*

The Congregation Beth Shalom Scroll (USPS531-420) is published monthly by Congregation Beth Shalom, 14200 Lamar, Overland Park, KS 66223. Annual Subscription \$24.00. Periodical Postage Paid in Kansas City, MO.

**DATED MATERIAL**

**POSTMASTER:** Send address changes to CONGREGATION BETH SHALOM SCROLL, 14200 Lamar, Overland Park, KS 66223.

*Congregation Beth Shalom, an egalitarian Conservative synagogue, is a welcoming community of individuals from diverse backgrounds, strengthening connections with God, Torah and the Jewish people through communal commitment to prayer, study and acts of loving kindness.*

## September Highlights

**Scroll Deadline**

Submit articles to the Administrative office.  
October 7 for November

Bar Mitzvah of Benjamin Rosenthal: Sept 4

Erev Rosh HaShanah/  
Labor Day: Sept 6  
Admin offices closed

Rosh HaShanah Day 1: Sept 7  
Admin offices closed

Rosh HaShanah Day 2: Sept 8  
Admin offices closed

Erev Yom Kippur: Sept 15  
Admin offices close at noon

Yom Kippur: Sept 16  
Admin offices closed

Sukkot Days 1, 2 : Sept 21,22  
Admin Offices closed

Sukkot Days 4,5, 6: Sept 24,25, 26

Hoshana Rabah: Sept 27  
Admin offices close at noon

Simchat Torah: Sept 29  
Admin offices closed

**Virtual Office 913-647-7279**

MONDAY-THURSDAY 8:30 AM - 5 PM  
FRIDAY 8:30 AM - 3 PM  
*Closed on Federal Holidays*

**Mt. Carmel Cemetery Hours 913-647-7279**

MONDAY & WEDNESDAY 8:00 AM - 4:30 PM  
TUESDAY & THURSDAY CLOSED  
FRIDAY & SUNDAY 8:00 AM - 4:00 PM  
SATURDAY CLOSED  
NATIONAL HOLIDAYS 9:00 AM - 4:00 PM  
JEWISH HOLIDAYS CLOSED

*Exceptions: Thanksgiving, Christmas Day, New Year's Day & Easter*

**Sisterhood Gift Shop Hours**

*Gift Shop Schedule* 913-642-6393

MONDAY & FRIDAY BY APPOINTMENT ONLY  
TUESDAY 11:00 AM - 2:00 PM  
WEDNESDAY 10:00 AM - 2:15 PM  
THURSDAY 10:00 AM - 2:30 PM  
*Open when PRS is in session*

*Other Hours*

CALL MARY WEINER 913-642-9363

