

Rabbi Morris B. Margolies Memorial Award for Excellence in Jewish Education Will Be Presented to Ed Rose



Rabbi Morris B. Margolies
CBS Rabbi 1961-1986
Co-founder, HBHA

Congregation Beth Shalom and the Greater Kansas City community on Sunday evening, December 8th, will launch an inaugural event to present the Rabbi Morris B. Margolies Memorial Award for Excellence in Jewish Education. We are proud to honor Ed Rose for his contributions to Jewish education, most notably the Rose Family Early Childhood Education Center.



Ed Rose
Recipient of the
Rabbi Morris B.
Margolies Award

This debut event will be held at the JCC White Theatre, where

Leon Wieseltier, a noted American intellectual, philosopher and Literary Editor of *The New Republic*, an American magazine of commentary on politics and the arts, will give a compelling talk. He is a leading Jewish thinker and a recent recipient of the renowned Dan David Prize.



Guest speaker
Leon Wieseltier

Tickets for this fabulous evening will be \$75 per person and will include cocktails, "heavy" hors d'oeuvres and a scrumptious array of desserts. You will have the opportunity to meet and talk with Leon Wieseltier. [Register online here.](#) Please consider a tribute in honor of Ed Rose or in memory of Rabbi Margolies, z"l. [Contribute online.](#)

CBS Celebrates 2013 Award Winners for Volunteer Shabbat

Mike Rogovein, Kovod Award Recipient



Mike Rogovein has been named the 2013 Kovod Award recipient, and will be honored at Volunteer Shabbat on December 7th. The Kovod Award, initiated by the Men's Club in 1944, was established to "honor an individual or individuals, who have provided exceptional service to Congregation Beth Shalom". Mike's father, Tom Rogovein, was the recipient of the Kovod Award in 1956.

Mike's involvement at Beth Shalom began when he attended Religious School, had his Bar Mitzvah, was in the Confirmation class and was active in USY and LTF. Mike and his wife, Laurel, have belonged to Beth Shalom as a couple since 1959. They have three children: Sara, Matt and Danny, and four grandchildren.

A member of the Board of Directors and a Life Board Member, he has served as Building and Grounds Chairman at Paseo, Wornall, and Lamar. He was Chairman of the Transition from Wornall to Lamar. CBS has benefitted from Mike's experience as a mechanical engineer and over 50 years at Tension Envelope. Other past activities at Beth Shalom include Past President of the Men's Club and the Couples Club with Laurel. He stated, "I really enjoy the educational and social activities of the synagogue and giving back to my congregation."

Mirra Klausner, Arthur Brand Leadership Award Winner



This year's recipient is lifetime Beth Shalom member, Mirra Klausner. A third-generation member of the congregation, Mirra is a graduate of the Hyman Brand Hebrew Academy and the University of Michigan. She received her PsyD from the Chicago School of Professional Psychology and she currently works as a grantwriter for SafeHome.

Mirra completed her second term on the Board of Directors, is a member of the Ritual Committee, has tutored numerous B'nai Mitzvah students, and coordinated the Bar and Bat Mitzvah program during 2012-2013.

For 18 years, Mirra has been married to Todd Clauer, High School Principal and College Guidance Director at HBHA. They have three daughters, Haidee, Anna and Aviva. Receiving the award allowed Mirra to attend the United Synagogue of Conservative Judaism's Centennial "Conversation of the Century". Betty Brand will bestow the award during Shabbat services December 7th. The Arthur Brand Leadership Award was established in Arthur's memory in 1999 to recognize and develop new and emerging CBS leaders. Past-President and Parnas of CBS, Arthur filled many roles in our Congregation and the Jewish community.

From the Rabbi's Study

Greatest. Holiday. Ever. Thanksgivukkah.

This month is the mother of all Chagim, the hybrid holiday we've all been waiting for: Thanksgivukkah. By a number of mathematical and calendric quirks, this will not happen for another nearly eighty THOUSAND years. Online, you can find recipes galore, and a brilliant spoof by Stephen Colbert on this rare, celebratory overlap.

Thanksgivukkah is like the old Reese's Peanut Butter Cup commercial where two people bump into each other – one holding peanut butter, one holding chocolate – and one proclaims: "You've got your chocolate in my peanut butter," and the other responds, "You've got your peanut butter on my chocolate." Thanksgivukkah is an example of "two great tastes that taste great together."

I hope that a little bit of

Hanukkah will rub off on Thanksgiving, and some Thanksgiving will rub off on Hanukkah. (And hopefully in a way that will last longer than sweet potato latkes with cranberry apple-sauce.)

Thanksgiving is a time when we spend a lot of time giving generic thanks to the Divine. Hanukkah, however, is a time about specifically religious pride and independence. Having the freedom to celebrate uniquely as Jews (and as religiously as we care to) is something that is worth giving special thanks for on this uniquely American holiday.

Hanukkah is a time where we spend eight nights watching our children drool over presents and gifts by the light of the candles. Until the recent creep of Black Friday Shopping, Thanksgiving has retained a

relatively non-materialistic bent. I have found that many people do actually take time to give gratitude for the non-material gifts in their lives. Perhaps, this once-in-an-eternity holiday overlap will allow us to bring both thanks and giving to Hanukkah. Maybe by having a "November No-brainer" instead of a "December Dilemma," we can give Hanukkah the shot in the arm it needs and make Hanukkah more about gratitude and less about competing with other runaway holidays.



David M. Glickman

Rabbi David M. Glickman

dglickman@bethshalomkc.org

913-647-7294



Westport Flea Market
Kosher Burgers and More

Join us at the Westport Flea Market on Sunday, November 17th as the Kansas City Chiefs take on the Denver Broncos. We will have an all you can eat burger buffet under Va'ad Supervision! The buffet will open at 2:30 pm and the game begins at 3:05 pm. This event is open to the community and will sell out, so register quickly!! Clickable link to register or contact Stef Williams - swilliams@bethshalomkc.org with any questions!

[Register Online](#)

Are you ready for some football!?!?



L-r, Rabbi David Glickman, Chiefs #74, Offensive Tackle, Geoff Schwartz, and HBHA Director Howard Haas sport Chiefs colors and celebrate the Jewish connection to football in Kansas City.

Executively Speaking

Turkey & Latkes, Pilgrims or Maccabees???

For one time in our lifetime, Hanukkah and Thanksgiving arrive a day apart. We are now about to embark on two of my favorite "cook-for-holidays", made even more special this year because I will be able to celebrate both holidays with my three (almost four) grandchildren. Two very celebrated holidays will come together at a time when the days are short and cold weather begins to surround us.

I love the beauty of the Hanukkah... candles lit in a window, the smell of latkes and this year a cooking turkey, the family joining together for playing dreidel with gold chocolate

coins and of course there are the 8 gifts that need to be unwrapped or do they? Gifts do not have to be personal: create new memories, give tzedakah, feed the poor, help the abused, lend a hand to those who have outstretched theirs to you. These are gifts you can give to yourself and your children every time you light a candle on your hanukkah. Take a quiet moment for yourself, stare at the flickering lights, make that time a personal gift to yourself - the memory of how much you have accomplished. Hanukkah is about feel-good moments. Make it a shared experience with your children; it will stay



with them long after the toys they wanted so badly, and could not live without, are broken or discarded.



So my friends... let's give thanks this Thanksgiving/Hanukkah holiday for all we have, for our diversities that make us each so unique, for our wonderful families, our close friends and especially for being part of our extended synagogue family. By sharing, learning and embracing each other, together we will overcome life's adversities and seek happiness.

From my home to yours, best wishes for *two* happy holidays.

Elaine Levine, Executive Director

elvine@bethshalomkc.org

913-647-7293



The November Downtown Talmud Jam has been changed from November 13, to noon on Monday, November 4, in order to host Artist-in-Residence, David Moss, an illuminator, animator and transformer of Jewish texts, objects, spaces and souls. He will be visiting Kansas City for four days and is being sponsored by the Department of Jewish Life and Learning at the JCC. For more information on him, you can visit his website at <http://davidmoss.com/projects/garden-of-jewish-exploration/#>.

The Talmud Jam takes place at Lathrop & Gage. If you would like to join the Jam for their monthly lunch and learning, call the ritual office at 913-647-7281 for reservations.



Jewish Adult Education Opportunities

Nov. 4—Downtown

Talmud Jam

Nov. 7, 14, 21—

Peltzman Classes

Nov. 16—Parashat Hashavua



To Congregation Beth Shalom:

I wanted to thank you for your efforts at collecting donations for the JFS Food Pantry.

This year, CBS donated 1485 pounds of food, personal items and paper goods during your holiday drives.

Thanks so much!

Don Goldman

Jewish Family Services, CE

Sisterhood

Beverly Newman, President | shpres@bethshalomkc.org



Regina Pachter celebrating her 98th birthday with Rickie Haith in the Sukkah for a special PrayerWorks event.



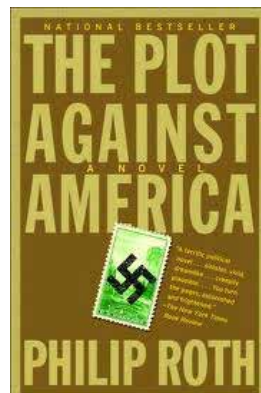
Desire, Chocolate, Sisterhood What goes with what?

What do you really know about chocolate? What kinds of cheese go with chocolate? The Sisterhood Winter Luncheon will be held on Tuesday, December 17 at 11:30 am in Goldsmith Hall. We will learn all about chocolate. Not that chocolate needs a mate, but join us and learn from an expert from *The Fresh Market* what cheeses you can pair with chocolate. You will have an opportunity to “taste” the pairings. You will be surprised! All tastings are generously being donated by *The Fresh Market*. Invitations will be mailed soon.

Come and Laugh with PrayerWorks

PrayerWorks will celebrate Thanksgiving and Hanukkah with a Laughter Yoga presentation by Maurine Pachter, SA, on Wednesday, November 27th, 10-11 am. Laughter Yoga is a practice involving prolonged voluntary laughter. It is based on the belief that voluntary laughter provides the same physiological and psychological benefits as spontaneous laughter.

To leave a name for healing, call Rickie Haith, facilitator, 913-341-8707. *Laughter is the best medicine.* Come join the fun.



Sisterhood Book Club Meets December 11

Beth Shalom Sisterhood Book Club will meet Wednesday, December 11, at 1:30 pm, at Arlene Shalinsky's home for an afternoon meeting this month. We will be discussing *The Plot Against America* by Philip Roth. The fictional tale depicts Charles A. Lindbergh elected President. “Shortly thereafter, he negotiates a cordial ‘understanding’ with Adolf Hitler, while the new government embarks on a program of folksy anti-Semitism.”

For further details, or to be added to the email list, contact Rowena Turk at 913-649-7098, or at turk@kc.rr.com.

Sisterhood Opportunities

- Nov. 6—Warm Up America!
- Nov. 7, 14, 21—Peltzman Classes
- Nov. 12—Bams for Mams
- Nov. 19—Safehome
- Nov. 27—PrayerWorks
- Dec. 3—Ronald McDonald Family Room
- Dec. 4—Warm Up America!
- Dec. 11—Board of Directors Meeting
- Dec. 11—Book Club
- Dec. 16—Children's Place



CBS boasts a new piece of art. Showcasing his latest work, Mordechai Rosenstein displays his art piece, *Doors Open Wide*. L-R: Jill Goldstein, Mordechai Rosenstein, and Elaine Levine.

A Big Thank You

from Children's Place

Sisterhood Members gave:
Over \$550 worth of art supplies
Over 170 packages of supplies
45 people brought in items
Plus, we received \$82 in cash.

Rose Family Early Childhood Education Center

Judy Jacks Berman, Director | jjb@bethshalomkc.org | 913-647-7287



Calling All Alumni for the Past 20 Years, Celebrate with Judy on her 20th Anniversary

We are celebrating with a 20th Anniversary Reunion weekend for alumni of Beth Shalom Preschool and their families! Saturday Feb 8th, join us for Shabbat Services and a special Kiddush Luncheon and program looking back on the last 20 years of where our alumni are now and what they are doing? We will also honor the teachers from the last 20 years who have helped make our preschool the best in town.



Please email Judy Jacks Berman, jjb@bethshalomkc.org with the following information:

Your name and your child's name, both your address and your child's address if different, email for both of you, phone numbers and a class picture or preschool picture of your child.

We would love for alumni to take part in the Shabbat morning service so please let us know if your child would like a part in the service.

Watch for more exciting details!



Join us November 9 for Tot Shabbat:

- 11 am "Tot" inental breakfast!
- Ruach filled service with Miss Bridey!
- Share in the celebration of Hazzan Ben-Yehuda's Installation!
- NO WAITING Kiddie Kiddush at tot-sized tables in the conference room!

"Tot" inental Breakfast and Kiddie Kiddush are being sponsored by Stewart and Esther Stein in honor of their grandchildren moving back to Kansas City.

Polsky Religious School (PRS)

Hazzan Ben-Yehuda, Director of Congregational Learning | hazzantby@bethshalomkc.org | 913-647-7296

November Full with Holidays and Religious School Events

Shalom! As we welcome November, with autumn firmly entrenched in our noses with the crisp smells of the turning leaves, and under our feet with their unmistakable crunch, we begin to turn our thoughts to the earliest Hanukkah in over a hundred years (in fact, 1888 was the last time that Hanukkah was celebrated concurrently with Thanksgiving). November also features two events before Hanukkah which you are invited to attend.

I very much look forward to being installed as your Director of Congregational Learning on the Shabbat of November 8-9, and hope you will join the celebration during Friday night and Shabbat morning services.

On Friday night, November 15th, the Seventh and Eighth grades at the PRS and HBHA will both host the congregation and lead services. Please join us for this family-friendly service.

One of the highlights of the year, Kindergarten Consecration, will take place on Friday night, November 22nd at 6 pm. Please plan to celebrate with the Kindergarten class of Congregation Beth Shalom, (both Polsky Religious School and Hyman Brand Hebrew Academy students) as we mark the beginning of their formal Jewish education through song and prayer. The children will be honored throughout the course of the service, and we will be singing some of the songs that they

have learned

Our Polsky Religious School will be celebrating Hanukkah with stories, songs & latkes in the weeks leading up to Hanukkah. While we will be out of school for Thanksgiving break at the beginning of the holiday of lights, we will have a school-wide celebration on the last night. All parents are invited to join their students and the faculty on Wednesday, December 4, from 6:00 to 6:15 as we bless the candles of the eighth night and nosh some latkes.

Hazzan Tahl Ben-Yehuda

Happy Hannukah CBS



Top Left Photo: USY painted with Artist in Residence, Mordechai Rosenstein. L-R: Leah Sosland, Farrah Karty, Elana Goldenberg, Becca Adler, Hayley Berger, Adena Goldberg, Gabi Cabell, Lindsey Paul, Alex Sher

Top Right Photo: Above, PRS students work at the Community Garden to complete the Fall Harvest.

Right: USY participates with Mordechai Rosenstein. L-R: Jacob Pellegrino, Joel Gutovitz, Bini Allen.

Youth & Informal Education

Stefanie Williams, Director | swilliams@bethshalomkc.org | 913-647-7292



Kinnus in Kansas City for 2013

Kinnus 2013 will be held November 28-December 1 at the Holiday Inn Coco Key Resort, Kansas City, Missouri. The theme is *The Hunger Games: Igniting the Fire Within*.

Join USY for EMTZA's largest convention of the year: Kinnus 2013! Take part in the EMTZA Hunger Games as we come to the realization that hunger isn't a game. Get ready for a fun-filled and action-packed weekend with over 250 teens from around EMTZA Region. Our lovely tri-chairs Moriah Abrams, Jacob Flekier and Ricardo Zepeda are putting together a weekend to remember!

We are recruiting adult volunteers throughout the weekend. Let Stef Williams know when you can join the team!

November USY Programs

November 6, 13, 20 –

Wednesday night programs preparing posters and programs for KINNUS

November 15 –

Kabbalat Shabbat at Village Shalom

November 25 –

Pre-Kinnus Turkey Dinner

November 28-December 1 –

Kinnus

CELEBRATING LIFE CYCLE EVENTS



November Anniversaries

Ecclesiastes 3:1

November Anniversaries will be honored during services on Shabbat morning, November 16. December Anniversaries will be honored on December 21. To sponsor a Kiddush contact Norman, 913-647-7283.

Day		Years
2	Randy & Dini Freed	10
3	Gary & Patti Friedman	28
3	Leo & Johanna Stein	56
5	Lee & Beth Albee	13
5	Seth & Rachel Katz	2
6	Eric & Lisa Ginsburg	8
6	Herbert & Barbara Simon	47
7	Peter & Joan Cabell	21
7	Gustave & Elinor Eisemann	59
7	Kevin & Sheryl Jordan	26
9	Larry & Beverly Mallin	61
10	Stanton & Sharon Rosenthal	28
11	Adam & Kim Matsil	18
12	Nathan & Ashley Ross	2
15	Vincent & Marcy Pellegrino	21
16	Stuart Bodker & Tensy Marcos-Bodker	28
17	Mark & Julye Rose	17
17	Joshua & Jane Sosland	23
18	Leibert & Miriam Birnbaum	57
18	Shelton & Nancy Gallas	51
19	Doug McNay & Dawn Gale	6
19	Jeremy & Hilary Singer	8
20	Jeffrey & Cathy Alpert	37
20	Yoni & Gina Cohen	9
21	Rodney & Gerre Minkin	54
25	Melyvn & Frances Beiman	57
25	Bruce & Lori Hertzfield	9
25	Robert & Carol Yarmo	46
26	Jeff & Rhonda Fromm	25
26	William & Joyce Shapiro	18
27	Howard & Cherice Gerson	30
27	Bernard & Judy Rosenberg	47
27	Steven & Lisa Ruben	25
27	Ron & Kathryn Zack	20
28	Steve & Milisa Flekier	20
29	Aaron & Jessica Kroll	5
29	Bennett & Bambi Zinman	15
30	Benny & Stephanie Cohen	22
30	Lee & Esther Pearlmuter	22

Mazal Tov!

Submit your Mazal Tov! to be published

Ashley Ruben, daughter of **Steve and Lisa Ruben** and granddaughter of **Rod and Gerre Minkin**, who received a scholarship from the Jewish War Veterans MO-KAN Post 605.

Alex Sher, daughter of **Anne Rosenthal** and **Scott Sher**, who has been named a National Merit Semi-Finalist.

Matt Kavanaugh, son of **Stephanie and Kurt Kavanaugh**, who has been named a Commended Student in the National Merit Scholarship Program.

Grant Sander, son of **Jeff and Linda Sander**, who has been named a National Merit Semi-Finalist.



Welcome New Member Families

Regev and Anne Alon

David and Debbie Kalmeyer



During the Flag Pole Dedication Ceremony October 7, Grant Sander, his father, Jeff Sander, and other celebrants unfurl and raise Old Glory. Installation of the flag poles was Grant's Eagle Project.

Of Blessed Memory

We express condolences to our Beth Shalom Members, their Families and Friends.

- Stanley Greenblatt, z"l, September 27 / 23 Tishrei*
Eleanor Tarson, z"l, September 27 / 23 Tishrei
Marifyn Oliver Nierman, z"l, September 30 / 26 Tishrei
Freda Rozenblit, z"l, October 3 / 29 Tishrei
Maxine Dubinsky, z"l, October 5 / 1 Heshvan
Phyllis Veta Forman, z"l, October 15 / 11 Heshvan
Marvin Breithaupt, z"l, October 18 / 14 Heshvan

November Unveilings

- Rose Stology- November 29, 10:30 am
 Alice Hammer- November 29, 11 am
 Robert Wayne - November 29, 3 pm
 Lois Levitch - December 1, 10:30 am
 Rabbi Margolies - December 1, 1 pm
at Mount Carmel

Yahrtzeits

Join us for morning or evening minyan to say Kaddish for your loved one. See service schedule, page 11.

- | | | | | | | | |
|--|---|--|--|---|--|--|--|
| 28 Heshvan-Nov 1
Sarah Adreme
Evelyn Cohen
Abe Gordon
Joseph Kupper
Walter Loeb
Hazel Manne
Edward A. Smith
Jake Temposky
Rose Naster
Zeligman | David Pelzerman
I. Frank Rope
Dora Rubin
Marie Sanell
Zelma Shapiro
Jessie Zinn | Samuel S. Rogell
Oscar Rose
Eva Sokoloff
Sol Stology
Frank Wayne | Harris Rothschild
Jack Shapiro
Sam Shenker
Arthur B. Taxman
William I. Winer | 15 Kislev-Nov 18
Anna Bodker
David Fleider
Shirley Fredman
Hyman Gordon
Heidi Marie
Howard-Reicher
Harry Ommerman
Freda Malka
Polokoff
Mary Freidel
Shanberg
Isadore Sorkin
Morton Sunshine
Rachel Waldman | Eda Litton
Sarah Mandelbaum
Jennie Rosenberg
Goldie Hoffman
Slepian
Rae Rosen Snitz
Mary Swartz
Jerome A.
Weinshank | 23 Kislev-Nov 26
Doris M Baraban
Clara Cohn
Raymond Fein
Eva R. Levey
Esther Levin
Meyer Lofman
Morris
Mandelbaum
William J. Rosenthal
Jake Schneider
Jacob Schoen
Mendel Small | Ernest E. Peiser
Fannie Polsky
Ruth Rose
Max J. Rotman
Nathan Silverforb
Joseph Steinberg
Mary Wolf
Hattie Wolff |
| 29 Heshvan-Nov 2
Alan Berl Bratt
Nathan Levenson
Dora Pilz
Mary S. Smith
Bella Vile
Sam Wedlan
Morris Weiner
Lillian Zwern | Stephen Mark
Hertzfield
Sadie Friedson Klein
Solomon Krigel
Harry Rosenberg
Dorothy C.
Shanberg
Sarah Gershman
Shearer | 7 Kislev-Nov 10
Jerome Abrams
Edward Bell
Issac Blond
Israel A. Brenner
Morris A.
Chernikoff
Abraham Gilgus
Maurice Gottlieb
Henry Harris
Rose Oliver
Louis Sudvarg
Phillip H. Taxman | 11 Kislev-Nov 14
Victor Bulavsky
Lillian Gilgus
Max Krasne
Zisel Lipsitz
Sam Singer
Hannah Stern
Kusele Trilinsky
Edward Waldman | 20 Kislev-Nov 23
Rebecca Bayles
Florence Phyllis
Berger
Geraldine Brown
Maureen Sue Dunn
Ida Fabian
Mildred K. Granoff
Samuel Hurwitz
Joseph Levine
Ruth Rose
Michael Rosenberg
Stella Schupan
Samuel G. Toub
Morris Trillin | 24 Kislev-Nov 27
Rosalie Ann Alpert
David Eliezar Ellis
Anna Epstein
Kasiel Galler
Marilyn Graubart
Seth Paul Jaben
Gertrude Goodman
Magazine
Rose Minkin
Philip Moskovitz
David Rittmaster
Irving E. Searles
Carrie Silverman | 26 Kislev-Nov 29
Max D. Cohen
Sedelle Glass
Fischel Greenbaum
Eugene Kopitnik
Sol Kupperstein
Mendel
Mendelsohn
Jerome H. Naron
Samuel Rosenstein
Bertha Untrif
Julius Wishna | 27 Kislev-Nov 30
Samuel D.
Aaronson
Sam Bell
Toba Corwin
Sarah Toby Davis
Louis Feinberg
Louis Feld
Hyman Gordon
Jacob Koppel
Isadore Rich
Israel D. Rubin
Minna Seelig
Hyman Shlensky
Harold Unger
Brett Weiner |
| 30 Heshvan-Nov 3
Delores
Rosenbloom
Benjamin
Jennie Greenman
Jessie Styra Hanick
Eloise Shlensky
Minkoff
Doris Rosenberg | 4 Kislev-Nov 7
Yetta Baier
Rebetzen Jennie
Burstein
Ruth Dennis
Casil Robert
Goldberg
Jacob Pelofsky
Florence Peltzman
Rose Silverberg | 8 Kislev-Nov 11
Israel Berlau
Bernard Chorrek
David S. Cooper
Harry Eisman
Rose Fried
Sadie Katz
Louis Lachs
Morris Lazarus
Hyman Minda
Benjamin Ryweck | 12 Kislev-Nov 15
Alta Bell
Rose Forman
Ida Friedman
Rose Hyman
Harold T. Karpin
Isadore Meyer
Natalie Kahn Neck
Morris Roitman
Morris Shankman
Bess Wolfberg | 16 Kislev-Nov 19
Joe Barash
Rachel Fogel
Clara Gershon
Muriel Glazer
Louis E Goldstein
David Gorman
Jack J. Margolis
Manuel Present
Ethel Smolinsky | 21 Kislev-Nov 24
Leah Rose Brown
Max Dubin
Marian Fox
Mary Gordon
Nedda S. Grollman
Al Hoffman
Samuel Kramer
Rose Levine
David Vinick
Morris Wagner
Edith Zwillenberg | 25 Kislev-Nov 28
Sarah Edith
Bernstein
Sarah Fredman
Sarah Gersh
Rose Halperin
Deborah Jacobson
Morris Kivovitch
Yetta Horovitz
Manne | |
| 1 Kislev-Nov 4
Celia Abels
Rebecca Bloustine
Marie Friedson
Max Gersh
Robert Reuben
Graff
Bluma Greenberg
Nathan Magazine
Ida B. Moskovitz
Dora Pearl
Moskowitz
Frances Rothschild
Rosa Rubin
Goldie Siegelbaum
Samuel Sosland | 5 Kislev-Nov 8
Tillie Abramson
Helen Bretton
Barnett Cohen
Arnold Cohen
Buelah Fleschman
Minnie Friedman
Samuel Gershon
Nathan Gilbert
Anna Hecht
Lena Junsberg
Isaac Katz
Daisy Markus
Morris Stein
Sol M. Yarowsky | 9 Kislev-Nov 12
Harry Baker
Freda Berman
Abe Bogdanoff
Isadore Bressel
Herbert Brooks
Max Cooper
Esther Corenman
Serena Grunwald
Bessie Hammer
Dora Jacobson
Yetta Joffee
Barbara Jean Krigel
Rebecca Lerner
Louis Studna | 13 Kislev-Nov 16
Aaron Agron
Beverly R. Bodker
Max Cohn
Libby Donovitz
Max Fleschman
Harry Furman
Sam Gale
Bessie Gross
Martin Hipsh
Irwin Kotelov
Sarah Ozar
Harry Puritz
Esther Szajnfeld
Anna Weitzman | 17 Kislev-Nov 20
Fannie Cohen
Rose Frischer
Elza Hermanson
Joe S. Hoffman
Samuel Minor
Ethel Tabolsky | 18 Kislev-Nov 21
Morris Alpern
Helen Baum
Dorothy Bodker
Philip Gerson
Jacob Greenberg
Nathan George
Jagoda
Frank Kaminsky
Bertha Katz
Wolf Kowalsky
Harry Oppenheimer
David Rothberg
Mary Shopmaker
Hyman Tempofsky | 22 Kislev-Nov 25
Emma Berlau
Mary Cohen
Anna Cohen
Louis Denebeim
Harry Dworkowitz
Walter Eichenwald
Jennie Fleschman
Clara Fox
Abe Aaron Goldberg
Sam Kahn
Jack Matson
Samuel Reichman
Rebecca Schorr
Mendle Silverman
Louis Werner | |
| 2 Kislev-Nov 5
Joe Baum
Abrom Copeland
Sarah Geister
Bertha Grossman
Tillie Kay
Hermine Klein
Herman Milgram | 6 Kislev-Nov 9
Herbert Mayer
Krigel
David Levitch
Morris Moss
Doris Kaufman
Poder
Elias Reichman | 10 Kislev-Nov 13
Elizabeth Atlas
Evelyn Azorsky
Joel Bock
Dora Deutch
Sam Fish
Jay Gottstein
Reuben Kalinsky
Harry Luben | 14 Kislev-Nov 17
Clara Brand
Abraham Clayman
Charles Hipsh
Joe Levin
Sarah Linsitz
Ike Miller
Joe Pack
Harold V. Pells
May Shapiro
Isadore Vile
Julius Windmuller | 19 Kislev-Nov 22
Henry Forrest
Jake J. Greenberg
Louis A. Grossman
Esther Horovitz
David House | | | |



Todah Rabbah!



*Contributions through
Oct. 17, 2013 are listed below.
Thank you for thinking of us.*

תודה רבה

Benjamin Ryweck Torah Fund

In Honor of
Hazzan Ben-Yehuda's Installation
Rickie Haith's 75th BD
Alan & Janet Salle's 24th Anniversary
Joan March
Earl Unell's Speedy Recovery
Shirley Gottstein
In Memory of
Alex Bratt
Edith Pinsky
Benjamin Ryweck
Joan March
Charlotte Gilbert
Susan Zale
Randy Rashkovsky
Shirley Gottstein

Chesed Committee Fund

In Memory of
Sherry Krug
Danielle & Sam Levine

General Fund

In Honor of
Mike Abrams
Carl Puritz
Renata Saskin's Birth
Lloyd & Jackie Stahl
In Memory of
Evelyn Alexander
Ed & Cheryl Alexander
Paul Alperson
David & Carol Porter
Doris Baraban
Diane More
Sol Baum
Rhea Salasche & Harold Kaseff
Leonard Betingier
Irene Betingier
Suzy Betingier
Irwin Block
Blossom Block
David Bodker
Stanley & Barbara Bodker
Helen Bold
David Gale & Gina Kaiser
Richard Bortel
David & Judy Weinstein
Joseph Carr
Carol Kusnetzky
Sharyn Cohen
Yoni & Gina Cohen
Pearl Dulsky
Susan Hammer
Joan Finestone
Linda Finestone
Alice Fox
Lewis Goldberg
John Goldberg & Marla Brockman
Rose Fried
Bobbie Bograd

Joseph Fried
Harvey Fried
Sarah Gersh
Eunice Zacharias
Major Goldstein
Elliott & Kathy Hollub
Dr Bella Gondos
Dave & Judy Jacobs
Stanley Alan Greenblatt
Mike & Laurel Rogovain
Gale Grossman
Louis Grossman
Alexander Meltzer
Norman & Charlene Meltzer
Serena Hammer
Pete & Debbie Katai
Louis Jacobs
Sidney & Rose Carr
Mary Kasten
Edith Rubin
Eugene Kopitnik
Shirley Malashock
Mary Malcy
Art Malcy
Shirley Lee
Mandelbaum
Mark & Ellie Mandelbaum
Abraham Mann
Milton Mann
Theresa Marshock
Marshall Talbot
Rebecca
Oppenheimer
Adrian & Kenneth Dubow
Julius Peltzman
Robert & Millie Peltzman
Edith Pinsky
Lee Kanter
Martin & Lynn Pollman
Ben Rosenberg
Charles & Rae Cohen
Sam Sander
Shirley Sander
Lou Sandler
Bettye Sue Balkin
Rebecca Schorr
Steve & Marcia Schorr
Leah Seiffer
Hyman Seiffer
Al Stulz
Randy & Meg Adler
Joseph & Sara Talbot
Allan & Margaret Talbot
Bella Vile
Howard Schultz
Ida & Hy Vile
Leslie Schultz
Harry A. Winer
Clarence & Alice Winer
Lechem Fund
In Honor of
Carol Brooks' 80th BD
Rob & Cindy Daniels
Judy Krug

Marcy Rydell's BD
Earl Unell's Speedy Recovery
Ben & Debra Rubin
In Memory of
Richard Bortel
Rob & Cindy Daniels
Ronald Chapman
Alan & Tina Chapman
Harry Eisman
Hope & Marshall Talbot
Ben Lerner
Ken & Sandi Lerner
Edith Pinsky
Judy Krug
Harold Unger
Rowena Turk

Library Fund

In Memory of
Ruben Mitz
Mel & Elaine Glazer

Beverly & Harvey Bodker Endowment Fund

In Honor of
Martin & Jeannine Fox's 45th Anniversary
Harvey Bodker
In Memory of
Beverly Bodker
Betsy Bodker
Fred & Cindy Bodker
Roberta Gorelick
Harvey Bodker
Sadie Klein
Cy Rudnick
Fred & Cindy Bodker

Cemetery Maintenance Fund

In Honor of
Stephen Hertzfield
Harriet Hertzfield
In Memory of
Walter Eichenwald
Howard Eichenwald
Alice Fox
Lewis Goldberg
Gerry Goldberg
Edith Pinsky
Mike & Sharon Milens
Minnie Solomon
Ben Solomon
Barney Summers
Sam Summers
Alberta Summers
Sarah Summers
Cynthia Feldman
Barney Summers
Charles Summers

Dave & Jean Brockman Scholarship Fund

In Honor of
David Brockman's Bar Mitzvah
Eden Brockman's Bar Mitzvah

Eliana Saidel's B/M Mitzvah
Merna Siegler
In Memory of
Stanley Alan Greenblatt
Dick & Charlotte Brockman
Dr. David Ellis Memorial Breakfast Club Fund

In Honor of
Saul & Irene Ellis 50th Anniversary
Cynthia Ellis & Carl Puritz
In Memory of
Rose Ellis
Neora Swartz
Cynthia Ellis
Morris Ellis
David Ellis
Rita Goldman

In Memory of
Eisemann Family Fund
In Honor of
Sylvia Shapiro's Bat Mitzvah
Gus & Elinor Eisemann
In Memory of
Edith Pinsky
Gus & Elinor Eisemann

In Honor of
Florence & Meyer Kaplan Sukkot Festival Fund
In Honor of
Marge Adler's Speedy Recovery
Regina Pachter's Special BD
Elliot Stupak's Speedy Recovery
Florie Kaplan
In Memory of
Marion Bloch
Robert Kaplan

In Honor of
Gale & Maxine Grossman Religious School
In Memory of
Gale Grossman
David & Lynne Bock
Gale Grossman
Louis Grossman
Maxine Grossman
Jessie Mann
Morton & Harriet Mann

In Memory of
Hanan Wedlan Family Fund
In Memory of
Jerry Abrams
Mitch, Lisa & Jessica Hamburg
Nancy Abrams
Eleanor Abrams
Elizabeth Wedlan
Reva Kaufman
Sam Wedlan
Mitch & Lisa Hamburg & Family

In Memory of
John Small Scholarship Fund
In Honor of
John Small
Jordan & Debra Abel
Kaiser Family Bar/Bat Mitzvah Tutoring Fund

In Memory of
Elvin Klein
Bill & Marcelle Kaiser
Kiddush Fund
In Honor of
Ron Coppaken
Being Named
Chatan Torah
Mike Rogovain
Receiving 2013 Kovod Award
Rhea Salasche & Harold Kaseff

In Memory of
Elviana Saidel's Bat Mitzvah
Marc Hammer & Alana Muller
Neal & Dana Schwartz
Jeff & Karen Gerson
Hazzan Ben-Yehuda's Discretionary Fund
In Appreciation of
Hazzan Ben-Yehuda
Brian & Jenn Brockman & Family
In Honor of
Eliana Saidel's Bat Mitzvah
Gloria Sher

In Honor of
Sarah Saxe's Bat Mitzvah
Marvin & Adelle Goldstein
In Memory of
Bettye Rose
Steinhaus
Art & Linda Levine
Joel Polsky USY Fund
In Memory of
Edith Pinsky
Jimmy & Sunni Rosenbloom

In Memory of
John Small Scholarship Fund
In Memory of
John Small
Jordan & Debra Abel
Kaiser Family Bar/Bat Mitzvah Tutoring Fund

In Memory of
Elvin Klein
Bill & Marcelle Kaiser
Kiddush Fund
In Honor of
Ron Coppaken
Being Named
Chatan Torah
Mike Rogovain
Receiving 2013 Kovod Award
Rhea Salasche & Harold Kaseff

In Memory of
Elviana Saidel's Bat Mitzvah
Marc Hammer & Alana Muller
Neal & Dana Schwartz
Jeff & Karen Gerson
Hazzan Ben-Yehuda's Discretionary Fund
In Appreciation of
Hazzan Ben-Yehuda
Brian & Jenn Brockman & Family
In Honor of
Eliana Saidel's Bat Mitzvah
Gloria Sher

Harry & Anita Daniels Camp Ramah Scholarship Fund
In Honor of
Eliana Saidel's Bat Mitzvah
Marc Hammer & Alana Muller
Neal & Dana Schwartz
Jeff & Karen Gerson

In Memory of
Mickey Goldstein
Donald & Harriet Sebert
Edith Pinsky
Donna Altman
Steve Berman & Judy Jacks Berman
Harvey Bodker
James & Karen Burke
Jerry & Barbara Cosner
Herbert & Ruth Halpern
Bill & Marcelle Kaiser
Jeff & Carol Marks
Randy & Sandra Moore
Florence Pack
Lee & Esther Pearlmutter
Ray & Gwen Pred
Ben & Susan Raymer
Ed & Ellen Rose
Donald & Harriet Sebert
Jeff Sebert
Merna Siegler
Herb & Barbara Simon
Mr Eugene White & Mrs Harriet Israel

In Memory of
Nettie Matters
Edith Pinsky
Helen Rae Cerier
Jacob H & Rose Levine Teacher Development Fund
In Honor of
Sarah Saxe's Bat Mitzvah
Marvin & Adelle Goldstein
In Memory of
Bettye Rose
Steinhaus
Art & Linda Levine
Joel Polsky USY Fund
In Memory of
Edith Pinsky
Jimmy & Sunni Rosenbloom

In Memory of
Nettie Matters
Edith Pinsky
Helen Rae Cerier
Jacob H & Rose Levine Teacher Development Fund
In Honor of
Sarah Saxe's Bat Mitzvah
Marvin & Adelle Goldstein
In Memory of
Bettye Rose
Steinhaus
Art & Linda Levine
Joel Polsky USY Fund
In Memory of
Edith Pinsky
Jimmy & Sunni Rosenbloom

In Memory of
Nettie Matters
Edith Pinsky
Helen Rae Cerier
Jacob H & Rose Levine Teacher Development Fund
In Honor of
Sarah Saxe's Bat Mitzvah
Marvin & Adelle Goldstein
In Memory of
Bettye Rose
Steinhaus
Art & Linda Levine
Joel Polsky USY Fund
In Memory of
Edith Pinsky
Jimmy & Sunni Rosenbloom

In Memory of
Nettie Matters
Edith Pinsky
Helen Rae Cerier
Jacob H & Rose Levine Teacher Development Fund
In Honor of
Sarah Saxe's Bat Mitzvah
Marvin & Adelle Goldstein
In Memory of
Bettye Rose
Steinhaus
Art & Linda Levine
Joel Polsky USY Fund
In Memory of
Edith Pinsky
Jimmy & Sunni Rosenbloom

In Memory of
Nettie Matters
Edith Pinsky
Helen Rae Cerier
Jacob H & Rose Levine Teacher Development Fund
In Honor of
Sarah Saxe's Bat Mitzvah
Marvin & Adelle Goldstein
In Memory of
Bettye Rose
Steinhaus
Art & Linda Levine
Joel Polsky USY Fund
In Memory of
Edith Pinsky
Jimmy & Sunni Rosenbloom

In Memory of
Nettie Matters
Edith Pinsky
Helen Rae Cerier
Jacob H & Rose Levine Teacher Development Fund
In Honor of
Sarah Saxe's Bat Mitzvah
Marvin & Adelle Goldstein
In Memory of
Bettye Rose
Steinhaus
Art & Linda Levine
Joel Polsky USY Fund
In Memory of
Edith Pinsky
Jimmy & Sunni Rosenbloom

In Memory of
Nettie Matters
Edith Pinsky
Helen Rae Cerier
Jacob H & Rose Levine Teacher Development Fund
In Honor of
Sarah Saxe's Bat Mitzvah
Marvin & Adelle Goldstein
In Memory of
Bettye Rose
Steinhaus
Art & Linda Levine
Joel Polsky USY Fund
In Memory of
Edith Pinsky
Jimmy & Sunni Rosenbloom

In Memory of
Nettie Matters
Edith Pinsky
Helen Rae Cerier
Jacob H & Rose Levine Teacher Development Fund
In Honor of
Sarah Saxe's Bat Mitzvah
Marvin & Adelle Goldstein
In Memory of
Bettye Rose
Steinhaus
Art & Linda Levine
Joel Polsky USY Fund
In Memory of
Edith Pinsky
Jimmy & Sunni Rosenbloom

In Memory of
Nettie Matters
Edith Pinsky
Helen Rae Cerier
Jacob H & Rose Levine Teacher Development Fund
In Honor of
Sarah Saxe's Bat Mitzvah
Marvin & Adelle Goldstein
In Memory of
Bettye Rose
Steinhaus
Art & Linda Levine
Joel Polsky USY Fund
In Memory of
Edith Pinsky
Jimmy & Sunni Rosenbloom

In Memory of
Nettie Matters
Edith Pinsky
Helen Rae Cerier
Jacob H & Rose Levine Teacher Development Fund
In Honor of
Sarah Saxe's Bat Mitzvah
Marvin & Adelle Goldstein
In Memory of
Bettye Rose
Steinhaus
Art & Linda Levine
Joel Polsky USY Fund
In Memory of
Edith Pinsky
Jimmy & Sunni Rosenbloom

In Memory of
Nettie Matters
Edith Pinsky
Helen Rae Cerier
Jacob H & Rose Levine Teacher Development Fund
In Honor of
Sarah Saxe's Bat Mitzvah
Marvin & Adelle Goldstein
In Memory of
Bettye Rose
Steinhaus
Art & Linda Levine
Joel Polsky USY Fund
In Memory of
Edith Pinsky
Jimmy & Sunni Rosenbloom

In Memory of
Nettie Matters
Edith Pinsky
Helen Rae Cerier
Jacob H & Rose Levine Teacher Development Fund
In Honor of
Sarah Saxe's Bat Mitzvah
Marvin & Adelle Goldstein
In Memory of
Bettye Rose
Steinhaus
Art & Linda Levine
Joel Polsky USY Fund
In Memory of
Edith Pinsky
Jimmy & Sunni Rosenbloom

In Memory of
Nettie Matters
Edith Pinsky
Helen Rae Cerier
Jacob H & Rose Levine Teacher Development Fund
In Honor of
Sarah Saxe's Bat Mitzvah
Marvin & Adelle Goldstein
In Memory of
Bettye Rose
Steinhaus
Art & Linda Levine
Joel Polsky USY Fund
In Memory of
Edith Pinsky
Jimmy & Sunni Rosenbloom

In Memory of
Nettie Matters
Edith Pinsky
Helen Rae Cerier
Jacob H & Rose Levine Teacher Development Fund
In Honor of
Sarah Saxe's Bat Mitzvah
Marvin & Adelle Goldstein
In Memory of
Bettye Rose
Steinhaus
Art & Linda Levine
Joel Polsky USY Fund
In Memory of
Edith Pinsky
Jimmy & Sunni Rosenbloom

In Memory of
Louis E. Goldstein
Norman Landa
Freda Rozenblit
Marvin & Carol Goldstein
Mickey Goldstein
Stanley Greenblatt
Brett Weiner
Rhea Salasche & Harold Kaseff
Louis & Edith Pinsky Fund
In Memory of
Mickey Goldstein
Donald & Harriet Sebert
Edith Pinsky
Donna Altman
Steve Berman & Judy Jacks Berman
Harvey Bodker
James & Karen Burke
Jerry & Barbara Cosner
Herbert & Ruth Halpern
Bill & Marcelle Kaiser
Jeff & Carol Marks
Randy & Sandra Moore
Florence Pack
Lee & Esther Pearlmutter
Ray & Gwen Pred
Ben & Susan Raymer
Ed & Ellen Rose
Donald & Harriet Sebert
Jeff Sebert
Merna Siegler
Herb & Barbara Simon
Mr Eugene White & Mrs Harriet Israel

In Memory of
Louis E. Goldstein
Norman Landa
Freda Rozenblit
Marvin & Carol Goldstein
Mickey Goldstein
Stanley Greenblatt
Brett Weiner
Rhea Salasche & Harold Kaseff
Louis & Edith Pinsky Fund
In Memory of
Mickey Goldstein
Donald & Harriet Sebert
Edith Pinsky
Donna Altman
Steve Berman & Judy Jacks Berman
Harvey Bodker
James & Karen Burke
Jerry & Barbara Cosner
Herbert & Ruth Halpern
Bill & Marcelle Kaiser
Jeff & Carol Marks
Randy & Sandra Moore
Florence Pack
Lee & Esther Pearlmutter
Ray & Gwen Pred
Ben & Susan Raymer
Ed & Ellen Rose
Donald & Harriet Sebert
Jeff Sebert
Merna Siegler
Herb & Barbara Simon
Mr Eugene White & Mrs Harriet Israel

In Memory of
Louis E. Goldstein
Norman Landa
Freda Rozenblit
Marvin & Carol Goldstein
Mickey Goldstein
Stanley Greenblatt
Brett Weiner
Rhea Salasche & Harold Kaseff
Louis & Edith Pinsky Fund
In Memory of
Mickey Goldstein
Donald & Harriet Sebert
Edith Pinsky
Donna Altman
Steve Berman & Judy Jacks Berman
Harvey Bodker
James & Karen Burke
Jerry & Barbara Cosner
Herbert & Ruth Halpern
Bill & Marcelle Kaiser
Jeff & Carol Marks
Randy & Sandra Moore
Florence Pack
Lee & Esther Pearlmutter
Ray & Gwen Pred
Ben & Susan Raymer
Ed & Ellen Rose
Donald & Harriet Sebert
Jeff Sebert
Merna Siegler
Herb & Barbara Simon
Mr Eugene White & Mrs Harriet Israel

In Memory of
Louis E. Goldstein
Norman Landa
Freda Rozenblit
Marvin & Carol Goldstein
Mickey Goldstein
Stanley Greenblatt
Brett Weiner
Rhea Salasche & Harold Kaseff
Louis & Edith Pinsky Fund
In Memory of
Mickey Goldstein
Donald & Harriet Sebert
Edith Pinsky
Donna Altman
Steve Berman & Judy Jacks Berman
Harvey Bodker
James & Karen Burke
Jerry & Barbara Cosner
Herbert & Ruth Halpern
Bill & Marcelle Kaiser
Jeff & Carol Marks
Randy & Sandra Moore
Florence Pack
Lee & Esther Pearlmutter
Ray & Gwen Pred
Ben & Susan Raymer
Ed & Ellen Rose
Donald & Harriet Sebert
Jeff Sebert
Merna Siegler
Herb & Barbara Simon
Mr Eugene White & Mrs Harriet Israel

In Memory of
Louis E. Goldstein
Norman Landa
Freda Rozenblit
Marvin & Carol Goldstein
Mickey Goldstein
Stanley Greenblatt
Brett Weiner
Rhea Salasche & Harold Kaseff
Louis & Edith Pinsky Fund
In Memory of
Mickey Goldstein
Donald & Harriet Sebert
Edith Pinsky
Donna Altman
Steve Berman & Judy Jacks Berman
Harvey Bodker
James & Karen Burke
Jerry & Barbara Cosner
Herbert & Ruth Halpern
Bill & Marcelle Kaiser
Jeff & Carol Marks
Randy & Sandra Moore
Florence Pack
Lee & Esther Pearlmutter
Ray & Gwen Pred
Ben & Susan Raymer
Ed & Ellen Rose
Donald & Harriet Sebert
Jeff Sebert
Merna Siegler
Herb & Barbara Simon
Mr Eugene White & Mrs Harriet Israel

In Memory of
Louis E. Goldstein
Norman Landa
Freda Rozenblit
Marvin & Carol Goldstein
Mickey Goldstein
Stanley Greenblatt
Brett Weiner
Rhea Salasche & Harold Kaseff
Louis & Edith Pinsky Fund
In Memory of
Mickey Goldstein
Donald & Harriet Sebert
Edith Pinsky
Donna Altman
Steve Berman & Judy Jacks Berman
Harvey Bodker
James & Karen Burke
Jerry & Barbara Cosner
Herbert & Ruth Halpern
Bill & Marcelle Kaiser
Jeff & Carol Marks
Randy & Sandra Moore
Florence Pack
Lee & Esther Pearlmutter
Ray & Gwen Pred
Ben & Susan Raymer
Ed & Ellen Rose
Donald & Harriet Sebert
Jeff Sebert
Merna Siegler
Herb & Barbara Simon
Mr Eugene White & Mrs Harriet Israel

In Memory of
Louis E. Goldstein
Norman Landa
Freda Rozenblit
Marvin & Carol Goldstein
Mickey Goldstein
Stanley Greenblatt
Brett Weiner
Rhea Salasche & Harold Kaseff
Louis & Edith Pinsky Fund
In Memory of
Mickey Goldstein
Donald & Harriet Sebert
Edith Pinsky
Donna Altman
Steve Berman & Judy Jacks Berman
Harvey Bodker
James & Karen Burke
Jerry & Barbara Cosner
Herbert & Ruth Halpern
Bill & Marcelle Kaiser
Jeff & Carol Marks
Randy & Sandra Moore
Florence Pack
Lee & Esther Pearlmutter
Ray & Gwen Pred
Ben & Susan Raymer
Ed & Ellen Rose
Donald & Harriet Sebert
Jeff Sebert
Merna Siegler
Herb & Barbara Simon
Mr Eugene White & Mrs Harriet Israel

In Memory of
Louis E. Goldstein
Norman Landa
Freda Rozenblit
Marvin & Carol Goldstein
Mickey Goldstein
Stanley Greenblatt
Brett Weiner
Rhea Salasche & Harold Kaseff
Louis & Edith Pinsky Fund
In Memory of
Mickey Goldstein
Donald & Harriet Sebert
Edith Pinsky
Donna Altman
Steve Berman & Judy Jacks Berman
Harvey Bodker
James & Karen Burke
Jerry & Barbara Cosner
Herbert & Ruth Halpern
Bill & Marcelle Kaiser
Jeff & Carol Marks
Randy & Sandra Moore
Florence Pack
Lee & Esther Pearlmutter
Ray & Gwen Pred
Ben & Susan Raymer
Ed & Ellen Rose
Donald & Harriet Sebert
Jeff Sebert
Merna Siegler
Herb & Barbara Simon
Mr Eugene White & Mrs Harriet Israel

In Memory of
Louis E. Goldstein
Norman Landa
Freda Rozenblit
Marvin & Carol Goldstein
Mickey Goldstein
Stanley Greenblatt
Brett Weiner
Rhea Salasche & Harold Kaseff
Louis & Edith Pinsky Fund
In Memory of
Mickey Goldstein
Donald & Harriet Sebert
Edith Pinsky
Donna Altman
Steve Berman & Judy Jacks Berman
Harvey Bodker
James & Karen Burke
Jerry & Barbara Cosner
Herbert & Ruth Halpern
Bill & Marcelle Kaiser
Jeff & Carol Marks
Randy & Sandra Moore
Florence Pack
Lee & Esther Pearlmutter
Ray & Gwen Pred
Ben & Susan Raymer
Ed & Ellen Rose
Donald & Harriet Sebert
Jeff Sebert
Merna Siegler
Herb & Barbara Simon
Mr Eugene White & Mrs Harriet Israel

In Memory of
Louis E. Goldstein
Norman Landa
Freda Rozenblit
Marvin & Carol Goldstein
Mickey Goldstein
Stanley Greenblatt
Brett Weiner
Rhea Salasche & Harold Kaseff
Louis & Edith Pinsky Fund
In Memory of
Mickey Goldstein
Donald & Harriet Sebert
Edith Pinsky
Donna Altman
Steve Berman & Judy Jacks Berman
Harvey Bodker
James & Karen Burke
Jerry & Barbara Cosner
Herbert & Ruth Halpern
Bill & Marcelle Kaiser
Jeff & Carol Marks
Randy & Sandra Moore
Florence Pack
Lee & Esther Pearlmutter
Ray & Gwen Pred
Ben & Susan Raymer
Ed & Ellen Rose
Donald & Harriet Sebert
Jeff Sebert
Merna Siegler
Herb & Barbara Simon
Mr Eugene White & Mrs Harriet Israel

In Memory of
Louis E. Goldstein
Norman Landa
Freda Rozenblit
Marvin & Carol Goldstein
Mickey Goldstein
Stanley Greenblatt
Brett Weiner
Rhea Salasche & Harold Kaseff
Louis & Edith Pinsky Fund
In Memory of
Mickey Goldstein
Donald & Harriet Sebert
Edith Pinsky
Donna Altman
Steve Berman & Judy Jacks Berman
Harvey Bodker
James & Karen Burke
Jerry & Barbara Cosner
Herbert & Ruth Halpern
Bill & Marcelle Kaiser
Jeff & Carol Marks
Randy & Sandra Moore
Florence Pack
Lee & Esther Pearlmutter
Ray & Gwen Pred
Ben & Susan Raymer
Ed & Ellen Rose
Donald & Harriet Sebert
Jeff Sebert
Merna Siegler
Herb & Barbara Simon
Mr Eugene White & Mrs Harriet Israel

In Memory of
Louis E. Goldstein
Norman Landa
Freda Rozenblit
Marvin & Carol Goldstein
Mickey Goldstein
Stanley Greenblatt
Brett Weiner
Rhea Salasche & Harold Kaseff
Louis & Edith Pinsky Fund
In Memory of
Mickey Goldstein
Donald & Harriet Sebert
Edith Pinsky
Donna Altman
Steve Berman & Judy Jacks Berman
Harvey Bodker
James & Karen Burke
Jerry & Barbara Cosner
Herbert & Ruth Halpern
Bill & Marcelle Kaiser
Jeff & Carol Marks
Randy & Sandra Moore
Florence Pack
Lee & Esther Pearlmutter
Ray & Gwen Pred
Ben & Susan Raymer
Ed & Ellen Rose
Donald & Harriet Sebert
Jeff Sebert
Merna Siegler
Herb & Barbara Simon
Mr Eugene White & Mrs Harriet Israel

In Memory of
Louis E. Goldstein
Norman Landa
Freda Rozenblit
Marvin & Carol Goldstein
Mickey Goldstein
Stanley Greenblatt
Brett Weiner
Rhea Salasche & Harold Kaseff
Louis & Edith Pinsky Fund
In Memory of
Mickey Goldstein
Donald & Harriet Sebert
Edith Pinsky
Donna Altman
Steve Berman & Judy Jacks Berman
Harvey Bodker
James & Karen Burke
Jerry & Barbara Cosner
Herbert & Ruth Halpern
Bill & Marcelle Kaiser
Jeff & Carol Marks
Randy & Sandra Moore
Florence Pack
Lee & Esther Pearlmutter
Ray & Gwen Pred
Ben & Susan Raymer
Ed & Ellen Rose
Donald & Harriet Sebert
Jeff Sebert
Merna Siegler
Herb & Barbara Simon
Mr Eugene White & Mrs Harriet Israel

In Memory of
Louis E. Goldstein
Norman Landa
Freda Rozenblit
Marvin & Carol Goldstein
Mickey Goldstein
Stanley Greenblatt
Brett Weiner
Rhea Salasche & Harold Kaseff
Louis & Edith Pinsky Fund
In Memory of
Mickey Goldstein
Donald & Harriet Sebert
Edith Pinsky
Donna Altman
Steve Berman & Judy Jacks Berman
Harvey Bodker
James & Karen Burke
Jerry & Barbara Cosner
Herbert & Ruth Halpern
Bill & Marcelle Kaiser
Jeff & Carol Marks
Randy & Sandra Moore
Florence Pack
Lee & Esther Pearlmutter
Ray & Gwen Pred
Ben & Susan Raymer
Ed & Ellen Rose
Donald & Harriet Sebert
Jeff Sebert
Merna Siegler
Herb & Barbara Simon
Mr Eugene White & Mrs Harriet Israel



Editorial Comments

The theme this year for Women's League for Conservative Judaism is Mishpachah: The Modern Jewish Family—the family, both in the traditional and non-traditional sense and all the nuances in between. Your synagogue family is one aspect. Our synagogue family is a diverse and interesting group of people. By supporting our synagogue programs (Religious School, Preschool, USY, Sisterhood, Men's Club and Congregational), and we have so many on the calendar, you may just happen to meet new people you would like to have as part of your synagogue family.

See you soon at Beth Shalom!

Comments by Bev Newman, *Scroll* Editor



A Nite at the Movies

What are you doing on Christmas Eve Nite? Are you tired of doing the same old thing? Sisterhood has an exciting new endeavor! We are taking over a former, well-supported, project of the now disbanded local chapter of Brandeis National Committee (Movie Nite Out). Several former BNC movie leaders bring their expertise to Beth Shalom's new version, "A NITE AT THE MOVIES".

This fun event will be held on Tuesday, December 24, 2013, at the Palazzo 16 Theatre. The movie choice, *Saving Mr. Banks*, is basically "the making of Mary Poppins" and deals with how Walt Disney managed to persuade the author P.L. Travers to sell the film rights. The evening will start with seating at 7:00 pm, with fabulous door prizes and movie to follow. The "Donor" level is \$25 per ticket; "Sponsor" level is \$60 and includes two tickets. Attendees receive free popcorn and a soft drink to enjoy during the show. A portion of each donation is tax deductible to the extent the law allows.

Sisterhood and CBS members, friends, family and the entire community are invited. Tickets will soon be available for sale. For more information, please contact Movie Chair, Linda Lessner at 913-897-0122 or llessner@kc.rr.com.



Cranberry and Apricots for Thanksgiving

Ingredients:

- 1/2 cup thinly sliced dried apricots (about 3 oz)
- 1/4 cup orange juice
- 3/4 cup water
- 2/3 cup sugar
- 1/4 cup honey
- 1(12 oz) package fresh cranberries



Preparation:

1. Combine apricots and orange juice in a small bowl. Cover and let stand 8 hours.
 2. Combine water and sugar in a medium saucepan, bring to a boil. Add apricot/orange juice mixture, honey and cranberries. Cook over medium heat 8 minutes or until slightly thick. Spoon mixture into bowl, cover and chill overnight.
- yield: 3 cups (serving size: 2 Tablespoons)

I usually double it for a larger group.



Miss Sunni Rosenbloom celebrates her birthday with students Jack Cowman and Shya Zeldin; Noah Muller is behind Sunni and with her back to the camera, Maya Shamir.

Congregational-Wide Events - See each department for their activities

Sunday	Monday	Tuesday	Wednesday	Thursday	Friday	Saturday
 3 Daylight Savings Ends 30 Heshvan	4 Talmud Jam 1 Kislev	5 2 Kislev	6 Warm Up America 3 Kislev	7 Peltzman Classes 4 Kislev	1 Scroll Deadline 28 Heshvan 6:00 <i>Shabbat Shalom</i>	2 Bat Mitzvah of Anna Blachar 29 Heshvan 7:00 <i>Havdalah Shavuah Tov!</i>
10 7 Kislev	11 Board of Directors Meeting 8 Kislev	12  SH Bams for Mams 9 Kislev	13 10 Kislev	14 Peltzman Classes 11 Kislev	15 12 Kislev 4:47 <i>Shabbat Shalom</i>	16 Anniversary Shabbat 13 Kislev 5:47 <i>Havdalah Shavuah Tov!</i>
17 Kosher Burgers at Flea Market for Chiefs Game 14 Kislev	18 15 Kislev	19 SafeHome 16 Kislev	20 17 Kislev	21 Peltzman Classes 18 Kislev	22 Kindergarten Consecration 19 Kislev 4:43 <i>Shabbat Shalom</i>	23 20 Kislev 5:43 <i>Havdalah Shavuah Tov!</i>
24 21 Kislev	25 22 Kislev	26 23 Kislev	27 PrayerWorks 24 Kislev	28  Happy Hanukkah 25 Kislev	29 Happy Hanukkah Kinnus Nov. 28-30 26 Kislev 4:40 <i>Shabbat Shalom</i>	30 27 Kislev 5:40 <i>Havdalah Shavuah Tov!</i>

Candle Lighting Blessing

ברוך אתה ה' אלקינו מלך העולם אשר קדשנו במצותיו וצונו להדליק נר של שבת.

Barukhi ata Adonai Eloheinu melekhi ha'olam, asher kiddeshanu b'mitzvotav vetzivanu lehadlik ner shel Shabbat.

November Service Schedule Shabbat CBS

November 28, Thanksgiving morning, Shacharit 8 am

Weekdays Village Shalom

Minchah:
Sunday-Thursday
6 pm

Shacharit:
Monday-Friday
7 am

Kabbalat Shabbat: **Friday** 6:00 pm
Main Service: **Saturday** 9:30 am
Library Minyan: **Saturday** 9:30 am
Tots for Torah: **Saturday** 9:30 am
Minchah: **Nov. 2** 6:00 pm
Minchah: **Nov. 9** 4:53 pm
Minchah: **Nov. 16** 4:47 pm
Minchah: **Nov. 23** 4:43 pm
Minchah: **Nov. 30** 4:40 pm
Shacharit: **Sunday** 8:30 am



Shabbat Services and Sunday morning Shacharit will be held at CBS, 14200 Lamar. Weekday Minyan will be held at Appleman Synagogue, Village Shalom, 5500 W. 123rd St.



Congregation Beth Shalom
 14200 Lamar • Overland Park, KS 66223
www.bethshalomkc.org
 Office: 913-647-7279 • Fax: 913-647-7277

CONGREGATION
Beth Shalom

David M. Glickman, *Senior Rabbi*
Hazzan Tahl Ben-Yehuda
Director of Congregational Learning
Elaine Levine, *Executive Director*
Alan Cohen, *Rabbi Emeritus*
Judy Jacks Berman, *Director, RFEC*
Michael Abrams, *President*
Bev Newman, *Scroll Editor*
Martha Hoffman, *Scroll Design*

The Congregation Beth Shalom Scroll (USPS531-420) is published monthly by Congregation Beth Shalom, 14200 Lamar Ave., Overland Park, KS 66223. Annual Subscription \$24.00. Periodical Postage Paid in Shawnee Mission, KS. **DATED MATERIAL**

POSTMASTER: Send address changes to CONGREGATION BETH SHALOM SCROLL, 14200 Lamar, Overland Park, KS 66223. Scroll Deadline: The 1st of the previous month. Submit articles to the Administrative office before the deadline.

Congregation Beth Shalom, an egalitarian Conservative synagogue, is a welcoming community of individuals from diverse backgrounds, strengthening connections with God, Torah and the Jewish people through communal commitment to prayer, study and acts of loving kindness.

Looking Ahead:
Scroll Deadline:
 November 1 for December
 December 2 for January
Margolies Award Event
 December 8
Sisterhood Movie event the evening of December 24
Sisterhood Shabbat/Kaplan Weekend
 January 17-18
Murder Mystery Night
 March 29



Hanukkah and Thanksgiving

A Once in a Lifetime Tandem Holiday.
 Enjoy

Office Hours:
 Monday - Thursday 8:30 am-5 pm
 Friday 8:30 am-3 pm
Closed on Federal Holidays

Mt. Carmel Cemetery Hours:
 Monday, Wednesday 8 am-4 pm
 Tuesday, Thursday Closed
 Saturday Closed
 Friday & Sunday 8 am-4 pm
 National Holidays 9 am-4 pm
Exceptions: Thanksgiving, New Year's Day & Christmas Day
 Jewish Holidays Closed
Phone: 816-361-4495

Sisterhood Gift Shop Hours:
Hours: 913-647-7298
 Sunday 10 am-12 pm
 Monday, Tuesday, Wednesday: 10 am-2 pm
 Wednesday 4-6 pm
 Thursday 11:45 am-12:15 pm
 Friday 10 am-noon
Please call before you come in.

Gift Shop Thanksgivukkah Sale

This year, thanks to the Jewish calendar, the Customer Appreciation Sale will coincide with Hanukkah. Beginning November 3rd, and continuing for 3 weeks, shoppers will enjoy 25% off of most items in the Gift Shop, with an extra



10% off any item over \$200.

Stock up on wedding, baby, Bar & Bat Mitzvah gifts, hostess gifts like trays and candy dishes or buy that piece of jewelry you've been admiring. Hanukkiot, dreidels, candlesticks, mezuzah cases & jewelry are included, although ritual items (Klafs, Tallitot, T'fillin, women's headcoverings), candles, Aram & most Rosenthal are excluded. Stop by and see. We know you'll be pleased.

Gabbayim Shabbat



L-r: Hazzan Ben-Yehuda, Rhea Salasche, Rabbi Glickman, and Harold Kaseff prepare lox for Gabbayim Shabbat.