



PATHWAY TO THE HOLY DAYS HIGH HOLY DAY EDITION

Tashlikh
will take place on
Monday, September 17,
along with Minchah, 4 pm,
at the bridge between Mid
America Surgery and Menorah
Hospital at 119th and Nall.
Come and symbolically
cast your sins in the
flowing water.

Journey with us for Tashlikh on the first day of Rosh HaShanah. Next to Menorah Medical Center, this beautiful setting will propel your holiday into a spiritual frame of mind.

Rosh HaShanah

Yom Kippur

Table of Contents

Rabbi	p.2
High Holy Days Info	p.2-3
Sisterhood	p.4
RPECC	p. 5
PRS	p. 5
B'nei Mitzvah	p. 6
Anniversaries	p. 7
Community	p. 10

SEPT
16

Erev

SEPT
17

SEPT
18

SEPT
25

Kol Nidrei

SEPT
26

Join us at the Jewish Community Center

5801 W. 115th St. Overland Park, KS

From the Rabbi's Study

Elul – Our time to “Warm Up”



It is not uncommon to talk about the High Holy Days as “a marathon.” I often think of the High

Even if you finish alive, you’ll wish you were dead!”

After the marathon your friend would say: “That was awful! Pure pain! I hated every minute! I’m never going to run again as long as I live.” Then, about a year later, your friend might say: “You know what, I really need to get in shape. I should start running. Maybe next week I’ll run a marathon...”

Holidays in terms of a marathon.

Imagine if a friend – who was not really a runner – said to you, “I’m going to run a marathon. Next week! I’ve always heard that running can give you a rush, and runners are in such great shape. I’m going to run a marathon next week.”

You would say “You’re crazy!”

Rosh HaShanah and Yom Kippur are emotional, physical and spiritual challenges. You are not alone if you find them esoteric, irrelevant at times, and long. I am a rabbi, and I feel the same way at points during these holidays. The reason, though, is that they are the monumental works of our holiday cycle. They are an opera, a great symphony or a marathon –

activities that are potentially daunting, or potentially life-changing.

During this month of Elul, let us take this time to do some spiritual warming up together – reflecting on our past year, taking a look at the mahzor (high holiday prayer book) before the services, setting spiritual goals for the coming year of who we want to be.

I hope that this month of Elul is meaningful, and I look forward to moving toward the holidays with you in the weeks ahead.

Shalom,

Rabbi David M. Glickman

dglickman@bethshalomkc.org | 913-647-7294

High Holy Days Schedule

- | | | |
|-----------|--|-------|
| 16 | Erev Rosh HaShanah, Sunday, Sept. 16 | |
| | 6:30 pm White Theatre | – JCC |
| 17 | 1st Day Rosh HaShanah, Monday, Sept. 17 | |
| | 8:30 am White Theatre | – JCC |
| | 9 am Social Hall | – JCC |
| | 4 pm Tashlikh & Minchah | |
| | Mid America Rehab, 119th & Nall | |
| | 6 pm Ma’ariv | – JCC |
| 18 | 2nd Day Rosh HaShanah, Tuesday, Sept. 18 | |
| | 8:30 am White Theatre | – JCC |
| | 9 am Social Hall | – JCC |
| | 6 pm Minchah/Ma’ariv | – JCC |
| 23 | Mt. Carmel Memorial Service, Sunday, Sept. 23 | |
| | 12 pm Yukon Chapel Mt. Carmel Cemetery | |
| 25 | Kol Nidrei, Tuesday, Sept 25 | |
| | 6:30 pm White Theatre | – JCC |
| | 6:30 pm Social Hall | – JCC |
| 26 | Yom Kippur, Wednesday, Sept 26 | |
| | 8:30 am White Theatre | – JCC |
| | 9:00 am Social Hall | – JCC |
| | 5:00 pm Minchah, Ne’ilah & Ma’ariv | |
| | White Theatre | – JCC |
| | 7:50 pm Havdalah | |
| | 8:00 pm Sounding of the Shofar | |
| | 8:00 pm “Break Fast” | |



Look for your High Holy Days packet in mid August. See our website for details. If we don't have your email address, we will mail the packet to your house.

Mt. Carmel Memorial Service will be held on Sunday, September 23, 12 pm, in the Yukon Chapel, 5529 Ditzler, Raytown, MO. Join the CBS community in a remembrance service for those friends and family members who are no longer with us. Everyone is welcome.

Executively Speaking

The Sweetness of Learning

As we turn the calendar to August, I am reminded of those three dreaded words I was loathe to hear as a child during this time of year -- BACK TO SCHOOL. I don't believe much has changed since my school days. Even the most eager students typically need a bit of a pep talk to transition from the lazy days of summer.

Many years ago I learned that Yeshiva students in Europe were given a drop of honey to taste just before they learned their first words of Torah. Renana and I decided to carry on that tradition with our children with a modern twist. On the first day of school every year each of our kids

is presented with a Hershey's Kiss, an actual kiss on the cheek and a whisper in their ear that "Learning is Sweet". It is a tradition that we hope they pass on to their own children.

As the children of our community head back to school, let us all take advantage of the wonderful learning opportunities available in our shul and the Jewish community at large. Rabbi Glickman will be offering a number of opportunities to learn together. Stay tuned. The Rabbinic Council and the JCC will hold the annual Jewish Day of Discovery on August 26. Also in August, Village Shalom will hold its second Village Shalom University offering a variety of courses to the com-

munity over a two week period. These are free of charge and will culminate with a talk by Rabbi Irwin Kula on September 13 in the White Theatre. These are a just a taste of the many learning offerings available to our membership and the community.



President

mabrams@lathropgag.com



HIGH HOLY DAYS INFO

Ticket Policies

All members in good standing are eligible to receive tickets for High Holy Day Services. Membership in good standing includes a maximum of two adult tickets and entry for

children age 24 or younger (College Students must present a Student I.D.) If you are not sure that you are a member in good standing, contact Elaine Levine, Executive Director, elvine@bethshalomkc.org or 913-647-7293.

The form to apply for guest tickets is in the packet or online. Tickets are \$200 each unless your guests meet the special situations and exemptions for which tickets can be obtained free of charge: out-of-town guests, full-time students with student ID who are 26 or younger; military personnel with appropriate ID; members of other congregations who have submitted a letter from their home congregation stating they are members in good standing; and other situations as determined by our Membership Chairperson and the synagogue administration. For more information contact Norman Levitan, nlevitan@bethshalomkc.org or 913-647-7283.

Honors

There are honors available for the High Holy Day Services. These include Hebrew aliyot, English readings and nonspeaking aliyot. If you would like to have an honor for the White Theatre or Social Hall service please contact clergy2@bethshalomkc.org or complete the honors form available on the CBS website.

Cantor

Cantor Rebecca Carl of Philadelphia has been engaged for the White Theatre Service during the High Holy Days.



Parking

Parking is available throughout the Jewish Community Campus. Overflow parking will be available at Black and Veatch, 11401 Lamar Avenue. A map may be found on the back of your parking pass, which you will receive in the mail. There will be a shuttle bus available to take you to the JCC.

sisterhood

Linda Lessner, President | shpres@bethshalomkc.org



We would like to see YOU in this picture!



*Shop & Schmooze

at Chico's & Soma

Wednesday, August 15, 5:30 pm

PrayerWorks

Wednesday, August 22, 10:00 am

*Book Club

Wednesday, August 22, 7:00 pm

Executive Board Meeting

Tuesday, August 28, 9:45 am

Community Service Ops.

For details, contact Carol Yarmo

*For more information, see the July Scroll.

Message from the Cohens

Linda and I are very appreciative to everyone in the Beth Shalom family for all of the kindnesses extended to us. Todah for the kiddush in our honor, the new leaf on the Simcha Tree and the Bed, Bath and Beyond gift card. The latter will be put to very good use as we move into our new home. I also appreciate the very kind and tear-provoking e-mails and notes sent to me. Lastly, todah for the donations in our honor. All of these will be long remembered and cherished.

Rabbi Alan L. Cohen

Say YES to Sisterhood!

Sisterhood is beginning a new year with many exciting programs. We need YOU. Every woman in the congregation is invited to either renew her membership, or become a new member.

We sponsor the Sarah Peltzman Adult Education classes, operate the Sisterhood Gift Shop, volunteer in our CBS Community and the Greater Kansas City Community, nurture an active book club and have fun at Bunko Night. Our brand new community service project addresses bullying. Our active and committed organization truly offers something for everyone.

Our major fundraising project is our yearly congregational calendar that includes a directory of all synagogue members. The funds we raise help support important synagogue programs such as the Rose Family Early Childhood Education Center, the Polsky Religious School, USY Kinnus convention and gifts for life cycle events.

Annual dues are \$30. Make this the year that YOU become a part of Beth Shalom Sisterhood. Our annual membership luncheon will be held October 16. We hope to see you there! For more information, contact Dini Freed, Membership Vice President, 913-469-0021 or Linda Lessner, Sisterhood President, 913-897-0122.

KCUSY Back in Action!

August and September will find KCUSY "kicking off" the programming year with some fun and festive activities. On Tuesday, August 14th at 11 a.m. on one of Beth Shalom's fields, there will be a KCUSY and Alumni Kickball Game. All current and past members who are in town are invited to play. Since contact information is not available for all alumni, KCUSY is requesting that everyone spread the word to family and friends who are past members. Lunch will be served so please RSVP to Stef by Friday, August 10th.



Mark your calendars also for the congregation's Back to Shul Picnic on Sunday, August 19th and LTI August 24th-26th in St. Louis. In September, the KCUSY and Kadima Family Picnic will be held on the 9th. Stay tuned for more details!

Jen Paul Spearheading High Holy Day Appeal

It's time for our High Holy Day Appeal. Our goal this year is to raise \$75,000 and to have 100% membership participation. The High Holy Day Appeal is a vital part of our financial plan. We need your support. High Holy Day pledge cards will be mailed at the end of the month. Donations may be made online, by mailing in your pledge card, speaking to a board member on the phone or indicating your pledge on your High

Holy Day ticket and giving it to an usher during Yom Kippur services at the JCC. The success of this year's campaign depends on your pledge!

For more information, contact the High Holy Day Appeal Chair, Jen Paul at jpaul@kcpaul.com.



Rose Family Early Childhood Education Center

Judy Jacks Berman, Director | jjb@bethshalomkc.org | 913-647-7287

School and Fall Holiday Fun For Kids



School is around the corner and plans are being made for a great year! The children start the year learning about the fall holidays. For Rosh HaShanah they make New Year's cards and wish their friends and family Shanah Tovah Umetukah (a happy and sweet New Year)! They make honey cake or honey cookies to share with their families and enjoy many projects with apples and honey!

For Yom Kippur the preschoolers learn about being the best kid they can be--the best brother, sister, son, daughter or friend! They talk about emotions and what makes others feel happy and sad.

On Sukkot they will eat snacks in the Sukkah and learn about harvesting in our own organic garden. The children will pick pumpkins, peppers, tomatoes, potatoes and carrots that students have grown.

School is a Happy Fun Place where the kids learn so much!



Polsky Religious School (PRS)

Patti Kroll, Coordinator of Education | pkroll@bethshalomkc.org | 913-647-7290

Religious School Showcases Qualities Developing Individuals & Community

What does a good school look like? What should you look for in a quality religious school for your children? These questions were posed to the Polsky Religious School faculty and they came up with a wide range of ideas. We think a good school has the following characteristics and will use this as our check list throughout the year to make sure we are hitting the mark. A good school is:

- Organized – parents, students and teachers know what to expect and where to go to get answers to their questions
- Friendly, warm and inviting environment
- Definite set of goals with a good curriculum that has a scope and sequence to what is taught
- Opportunities for parent involvement and a place where parents feel welcomed
- Progressive and innovative
- Reciprocal parent-teacher communication
- Active engagement of students in classroom activities
- Students feel safe and can share their ideas and opinions without being judged or criticized
- The school director and school committee are supportive and accessible
- There is a sense of community and a feeling of belonging
- Manageable class size with teachers who are well trained and can address both the academic and social goals and challenges



The Polsky Religious School is a nationally recognized school and we all look forward to another year of quality learning. Please make sure you have enrolled your children for the coming year. If you know of anyone who is interested in sending their child to our school and would like more information about our program, contact Patti Kroll.



CELEBRATING LIFE CYCLE EVENTS

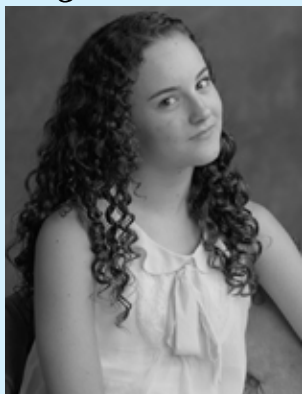
Ecclesiastes 3:1

Submit your B'nei Mitzvah announcements to be published.

Mazal Tov to our B'nei Mitzvah

Stella Louise Shapiro

August 18, 2012 • 30 Av 5772



Stella's parents are Kelly and Tony Shapiro. Her grandparents are Patti and the late Alvin Shapiro and Marie and Clarence Siebert, St. Louis, MO. She has two sisters: Sylvia and Ophelia. Stella attends the Hyman Brand Hebrew Academy and her special interests and activities include: ballet, art, music, soccer and basketball. Relatives

and friends are invited to worship with the family and attend the Kiddush Luncheon following the service.

Jaiden Nye

August 25, 2012 • 7 Elul 5772



Jaiden's parents are Meredith and Blaine Nye. Grandparents are Cindy and Bill Noon, Charlene and Jim Nye and Rose and Bryan Davis, Sedona, AZ. Grandfather L. Michael Weintraub is deceased. The Great Grandmother is Margaret Gutekunst. His sister is CaiLyn. Jaeden attends Harmony Middle School, and his special interests and activities are soccer and baseball. His Bar Mitzvah project is spending time at Village Shalom helping with Bingo and helping set up for special events. Relatives and friends are invited to worship with the family and attend the Kiddush Luncheon following the service.

Samuel Alan Galapo

Sept. 1, 2012 • 14 Elul 5772

Sam's parents are Janet and Simon Galapo. Grandparents are Margaret and Lawrence Goldstein and the late Sarah and Maurice Galapo. He has a sister, Elisa. Sam has attended the Hyman Brand Hebrew Academy and will be attending Leawood Middle School in the fall. Sam loves sports, especially soccer and basketball. His Bar Mitzvah project is spending time with the Alzheimer patients at Village Shalom. Relatives and friends are invited to worship with the family and attend the Kiddush Luncheon following services.



Sophie Elizabeth Levine

Sept. 1, 2012 • 14 Elul 5772

Minchah Service, 5:30 pm



Sophie's parents are Kate and Jay Levine. Grandparents are Linda and Arthur Levine and Alice and James Algie. Her brother is Jack Levine. Sophie attends Oxford Middle School and her special interests and activities include: playing basketball, reading, hanging out with friends and attending summer camp. Her Bat Mitzvah Project is volunteering with The Special Olympics through Blue Valley Recreation. Sophie worked with kids assisting them in playing sports, including swimming and T-ball. Please join Sophie and her family in worship.

CELEBRATING LIFE CYCLE EVENTS



August Anniversaries

Ecclesiastes 3:1

August Anniversaries will be honored during services on Shabbat morning, August 18. September Anniversaries will be honored on September 15. To sponsor a Kiddush contact Norman, 913-647-7283.

Day	Years	Day	Years	Day	Years
1 Debra & Jeremy Sandler	8	15 Nancy & Roger Klein	41	24 Meredith & Blaine Nye	16
2 Debra & Howard Cohen	31	Rochelle & Jerald Pelofsky	47	25 Phyllis & Erwin Abrams	49
Bryna & Lee Sorkin	48	Beth & Michael Sherry	8	Joan & Arnold Kort	49
4 Riki & Stephen Fein	49	Esther & Stewart Stein	41	26 Peggy & Alexander Davis	39
Kate & Eugene Lebovitz	68	16 Susan & Robert Greenberg	26	Emily & Stanley House	50
5 Deborah & Steven Agron	39	Judy & David Jacobs	55	Jennifer & David Podor	33
Flora & Gustav Faverman	37	Helaine Cohn & Eric Poe	14	27 Charlotte & Richard Brockman	51
Arlene & John Rubenstein	33	Nathalie & James Scharf	21	Berenice & Roger Haberman	17
Jacqueline & Lloyd Stahl	33	17 Danielle & Jeremy Antes	4	Gerry & Howard Trilling	45
7 Betya & Yakov Altman	63	Rosalyn & David Burnstein	54	28 Harriet & Lawrence Almaleh	29
Jacklyn & Phillip Hermanson	29	Gerri & Byron Ginsburg	26	Carla & Scott Oppenheimer	24
8 Cynthia Jacobsen & Gary Mass	36	Toba & Stephen Maslan	37	Vivien & Daniel Schlozman	52
10 Nancy & Lawrence Carl	32	18 Tina & Alan Chapman	49	29 Ellen & Stephen Kort	41
Marjorie & William Schlosberg	43	Nita & Robert Levy	44	30 Evie & Robert Grant	25
11 Shirley & Irving Epstein	44	Linda & Harold Schlozman	44	Dorene & Arnold Manvitz	48
Nancy & Elliott Franks	39	Aletha & Robert Simon	49	Gerri & David Ruben	20
Marilyn & Allan Kaufman	38	19 Paula & Clifford Cohen	40	31 Corrine & Jeffrey Blackman	27
Janet & Melvyn Kogan	49	Alicia & Edward Klein	22	Alana Muller & Marc Hammer	15
12 Judy Jacks Berman		Elaine & Isaac Rosenberg	39	Jessica Rudnick-Kaseff	
& Steven Berman	37	Gail & David Wainstock	22	& Barry Kaseff	26
Donna & Norman Joseph	28	20 Mia & Adam Feldman	6	Julie & Michael Levine	15
13 Diane & Arthur Federman	40	Elaine & Melvin Glazer	45	Janet & Harold Price	37
Stacy & Todd Hollander	17	Michelle & Dennis Kelly	30		
Katharine & Jay Levine	17	21 Sharon & Alvin Cohen	52		
14 Barbara & Al Beitchman	52	22 Joan & Alan Jacobson	41		
Marjorie & Stanley Brand	46	23 Laurel & Michael Rogovein	53		
Gail Berman & Jerry O'Connor	1	Frances & David Sternberg	42		

Mazal Tov to...

Submit your Mazal Tov to be published

Gertie Epstein on the marriage of grandson Eli Miller to Tamar Rock, June 17th in Baltimore, MD.

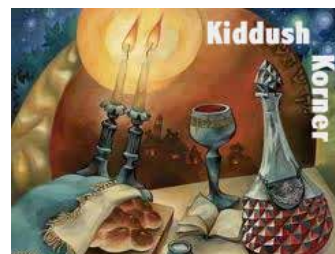
Debbie Sosland-Edelman upon her election as president of the Vaad HaKashruth of Kansas City.

Sunie Levin who has been recognized by the Sixth Annual National Indie Excellence Awards for her book, *Make New Friends...Live Longer*, in the category of Aging as a winner/finalist.

Paul Flam on the birth of his Great Granddaughter, Evelyn Rose Lamdon of New York.

Beth & Lee Albee upon the birth of their daughter, Rivka on July 19. Grandparents are **Ted and Jill Goldstein**. Big brothers are Danny and Evan.

Rod Minkin upon his election as chairman of the board of The Village Shalom Board of Directors.



Sponsoring a Kiddush Luncheon on a Shabbat morning is a great way to celebrate a simcha or to memorialize a loved one. For more information, contact Norm Levitan, nlevitan@bethshalomkc.org or 913-647-7283.

Thank you to Mike and Gloria Azorsky for sponsoring the July 28 Kiddush Luncheon in honor of the auf ruf of Lauren Azorsky and Jared Levy.

Of Blessed Memory

We express condolences to our Beth Shalom Members, their Families and Friends.

Sanford Goldansky, z"l, July 16 / 26 Tammuz

Jane Klaber, z"l, July 21 / 2 Av

Phillip Calvin Feingold, z"l, July 23 / 4 Av

Alvin Shapiro, z"l, July 24 / 5 Av

Unveilings

Ruthye Nowick Aug. 12, 10:30 am
Mt. Carmel

Barbara Enslein Aug. 12, 11:30 am
Blue Ridge

Joseph Singmon Sept 2, 11 am
Mt. Carmel

Yahrtzeits

Join us for morning or evening minyan to say Kaddish for your loved one. See service schedule, page 11.

13 Av-Aug 1

Rebecca Barash
Bessie Brenner
Samuel Brown
Sigmund Dollman
Rose Gould
Jack Kahn
Harry Levy
Jennie Marks
Isaac Sackin
Harris Segelbohm
Samuel Spector
Ruth Unger
Evelyn Yodler

14 Av-Aug 2

Norma Bush
Abraham Dorfman
Rebecca Greenstein
Abe Kaplan
Minnie Rafiel
Kreine Shankman
Henry Sosland

15 Av-Aug 3

Robert Bernstein
Sarah Freshman
Samuel Greenberg
Rose Hyman
Benjamin Katz
Frieda Shanberg
David Steinberg
Sadie Tonopolsky

16 Av-Aug 4

Annette Glaser
Sigmund Gundle
Freida Mendell
Abraham Sidley
Benjamin Silverman
Roni Smith
Louis Weintraub

17 Av-Aug 5

Rebecca Berman
Ethel Cohn
Abe Eisen
Louis Forman
Jacob Jagoda
Bess Merser
Lena Morris
Rubin Moskovitz
Joel Polsky
Lewis Sofnas
Sarah Wang

18 Av-Aug 6

Daniel Aranoff
Pola Baum
Marie Bell
Aaron Bloustine
Hyman Brand
Sylvia Bromberg
Benjamin Gastman
Kathleen C
Gelpman Peltzman
Lillie Lefkovits
Gladys Normand
Sidney Osur
Jacob Taxman
Sarah Waxenberg
Alex Wedlansky
Aaron Ziman

19 Av-Aug 7

Samuel Baum
Joshua Cinnamon
Maurice Dubinsky
Ruth Milgram
Eisberg
Meyer Gordon
Anna Halle
Jack Kay
Rachel Levinson
Ruthye Nowick
Sarah Rose

20 Av-Aug 8

Bernadine Benjamin
Donna Cohen
Frank Coleman
Esther Dubinsky
Esther Duni
Bess Ginsberg
Essie Goodman
Max Hecht
Joseph Klein
Sam Lustig
Simon Navran
Sam Pasmanik
Sarah Schere
Abe Schuman
Goldy Siegel

21 Av-Aug 9

Pesyl Brand
I.J. Cohen
Mollie Dashiell
Jack Denowitz
Anna Godock
Edith Goldstein
Reuben Kantor
Jacob Levinson
Sarah Siegel

22 Av-Aug 10

Charles Bass
Louis Donovan
Robert Fichman
Maurice Loeffler
Jacob Max
Esther Millstein
Clara Ommerman-
Gilgus
Harriet Schoket
Samuel Sukon
Rosa Witschner

23 Av-Aug 11

Richard Biederman
Sherman Cohen
Ed Michelson
Alana Morris
Louis Pinsky
Harry Robinson
Sam Rosen
Morris Ruback
Jacob Rubin
Joseph Schlosberg
Hortense Stern

24 Av-Aug 12

Frances Franks
Libbie Goldberg
Reuben Josephson
Rena Rosenberg
Philip Rosenblatt
Abraham Snyder
Hymie Sosland
John Spitaufsky
Gedaliah Vigder

25 Av-Aug 13

Yoheved Flekier
Max Gluck
Emilie Isaak
Max Lerer
Philip Levi
Emanuel Reichman
Frances Sandler
Samuel Shapiro
Marilyn Wasserman
Allen Yukon

26 Av-Aug 14

Edith Bell
Nathan Peltzman
Abe Sander

27 Av-Aug 15

Samuel Cohen
Ida Cohen
Nathan Dreiseszun
Abraham Goodman

Louis Grace
Louis Karosen
Joe Lipsky
Beatrice Willk
Anna Winett

28 Av-Aug 16

Etta Bayzman
Philip Cohen
Fannie Friedman
Rebecca Glassman
Moishe Kamar
Paulina Muller
Fanny Shlemovitz

29 Av-Aug 17

George Deiboch
Harry Dubinsky
Ben Goldstein
Israel Kamber
Ada Karosen
Rebecca Lieberman
Abe Markus
Abe Radetsky
Pro Sherman
Charles Smith
Mollie Spector
Samuel Summers

30 Av-Aug 18

Reline Eisemann
Anna Greenberg
Sam Horwitz
Theodore Kort
Jake Lazarus
Philip Lieberman
Joe Posner
Stanley Rostov
William Schoen
Sol Segal
Celia Spicer
Harry Teiblum

1 Elul-Aug 19

Louis Blond
Rose Denowitz
Fred Einhorn
Fannie Fish
Kenneth Fox
Albert Garfinkel
Jack Gersh
Tiby Gilbert
Esther Gilgus
A Jacobson
Henrietta Katzman
Jacob Langner
Eva Naman
Israel Rocher

David Schikevitz
Jacob Tulchinsky
Sharon Weinstein
Brian Yodler

2 Elul-Aug 20

Bess Byers
Edward Cohn
Reubin Katz
Rose Kaufman
Ellis Kraft
Meyer Minkin
Lottie Nodiff Leavitt
Jean Parmet
Morris Sanell
Josef Segelbohm
Samuel Simon
Anna Wedlan

3 Elul-Aug 21

Joseph Brenner
Charlotte Chernikoff
Serena Eisman
Serena Grinpas
Jack Klein
Jack Lesser
Sonia Mendelsohn
Elk Peltzman
Louis Rosenblatt
Harry Abe
Rosenblum

4 Elul-Aug 22

Sam Cohen
Myrl Cohen
Bessie Eichenberg
Beatrice Fogel
Abraham Goldberg
Slava Goldberg
Menia Levitch
Adolph Lipsey
Rosa Rosenblum
Ida Stein
Lena Stein
Ernest Wasserstrom

5 Elul-Aug 23

Louis Adreme
Harry Dean
Ruth Katz
Israel Raskin

Sam Rosenberg
Morris Stern
Paul Vigder

6 Elul-Aug 24

Rebecca Agron
Harry Byer
Sam Fishman
Rachel Hyman
Felix Jarus
Max Mindell
Simon Rothenberg
Nathan Samuels
Sarah Sandhaus
Hyman Schere
Eva Schwartz
Eva Weintraub
Sarah White

7 Elul-Aug 25

H. Deacon Cohen
Irving Cohen
Bernard Copeland
Sam Davis
Ida Gershon
Marian Gibbs
Kate Goldman
Jeanette Hoffman
Anna Jacobs
Minnie Katz
Fannie Kaufman
Ida Kaufman
Sarah Labowitz
Elaine Lewin
Abe Walters
Toby Weiss

8 Elul-Aug 26

Hanna Achtenberg
Anna Dantzig
Esther Goldstein
Rae Jacobs
Esther Kaplan
Sally Klutz
Samuel Levine
Leonard Levinson
Balfour Lieber
Ben Millstein
Morris Minkin
Irving Nasaw
Sophie Samuels

9 Elul-Aug 27

Ena Bush
Jordon Cohen
Gloria Cohn
Morris Goldblatt

Arthur Karbank
Bessie Kupperstein
Fannye Noah
Bennett Shapiro
Bernard Unger
Kip Weiner

10 Elul-Aug 28

Reva Bernstein
Samuel Copelman
Melvin Frischer
Harry Geller
Clara Gorman
Esther Jaben
Morris Penner
William Rosenberg
Sam Sheftel

11 Elul-Aug 29

Reva Eisberg
Anna Glickenhau
Joseph Levy
Louis Rolsky
Max Rostov

12 Elul-Aug 30

Norman Arluck
Al Burstein
Israel Feld
Baruch Grunwald
Donald L. Intrater
Harry Jacobs
Ethel Kaplan
Israel Salvay
Jennie Shankman
Herman Shapiro
Esther Shenker
Sarah Silverman
Morris Singer

13 Elul-Aug 31

Dora Baker
Max Benjamin
Ann Czarlinsky
Esther Kohn
Anna Levitt
Mary Schreiber
Harry Shapiro
David Silverman
Hyman Sokolov

Todah Rabbah!



*Contributions through
July 16, 2012 are listed below.
Thank you for thinking of us.*

תודה רבה

Adult Education Fund

in memory of
Judy Esrig
Bonnie Mandel & Jeff Bushman

Arlene & Gerald Ginsberg Youth Mem Perm Schol Fund

in honor of
Sam & Maurine Agron's 59th Ann
Arlene & James Ginsberg

Leo Shalinsky's Second Bar Mitzvah
Arlene & James Ginsberg

in memory of
Gertrude Zigler
Mr & Mrs Samuel Agron
Louis Zigler
Mr & Mrs Samuel Agron

Benjamin Ryweck Torah Fund

in honor of
Joan March 80th BD
Mr & Mrs Irving White
Anne Bratt's BD
Shirley Gottstein's BD

Joan March
in memory of
Shirley Schwartz
Joan March
Melvin Weissman
Ginny Burnett's Son
Dave Thompson
Shirley Gottstein

Beth Shalom Chesed Committee Fund

in honor of
Sarah Zeldin's 100th BD
Judith Wasserman

Beth Shalom General Fund

in honor of
Sara Mittelman's 95th BD
Mr & Mrs Ronald Goldsmith
Leo Shalinsky's 2nd Bar Mitzvah

David & Judy Jacobs
Mr & Mrs Arnold Kort

Marian Berkowitz
Shirley Frankowitz & Family

Leo Shalinsky's BD
Tom & Alice Lewinsohn

Rabbi Alan Cohen
Jerry Enslein & Hannah Harris

in memory of
Renetta Prebluda
Harry Prebluda
Dr & Mrs Jonathan Chilton

Sidney F. Pakula, M.D.
Dr & Mrs Lawrence Pakula

Dr. Robert Tonkens
Dr & Mrs Ross Tonkens

Judy Esrig
Dr David & Dr Judy Jacobs

Edith Penzner
Michael & Paula Penzner

Lewis Kaufman
Mr & Mrs Allan Kaufman

Skipper Feingold
Mr & Mrs Bob Johnson

Rose Zurovsky
Mr & Mrs Brian Miller

Linda Leibowitz
Max Kopin
Mr & Mrs Clarence Winer

Robert Freidman
Mr & Mrs Edward Alexander

Skipper Feingold
Mr & Mrs Edward Alexander

Mr & Mrs Michael Jacobs

Samuel Rogozenski
Mr & Mrs Harold House

Sigmund Mandelbaum
Mr & Mrs Mark Mandelbaum

Serena Eisman
Mr & Mrs Marshall Talbot

Jack David Beiman
Mr & Mrs Melyvn Beiman

Ella Rubin
Mr & Mrs Melyvn Beiman

Linda Leibowitz
Mr & Mrs Morris Faiman

Judy Esrig
Mr & Mrs Morris Faiman

Phyllis Leff
Mr & Mrs Neil Sosland

Joyce Westfeld
Mr & Mrs Robert Handleman

Leonard Bayzman
Mr & Mrs Steven Schorr

Rose Zurovsky
Mr & Mrs Stuart Pase

Lina Neustein
Mr & Mrs Warren Soble

Himie Wainstock
Mr & Mrs Winston Greene

Zillir Pasha
Mr & Mrs Yuly Khalemsky

Elaine Brown
Alan Brown

Max Bamberger
Albert Bamberger

Anna Cohen
Eugene Cohen

Abe Bernstein
Joseph Goldman

Phyllis Leff
Joseph Leff

Charles Bass
Martin Bass

Frieda Kanter
Michael Gross

Carol Glass
Pearl Mann

Milton Mann
Morris Singer
Nathan Rosen

Stanley Louis
Mrs Chris Louis

S. Nathan Salvay
Geraldine Salvay

Ann Schwartz
Anne Katz
Judith Parelman

Samuel Taylor
Margaret Smith

Esther Shapiro
Harry Shapiro
Marietta Dunn

Judy Esrig
Naomi Kaufman & Mordy Kopperman

Gary Bitner
Shirley Bitner

Frances Sandeen
Betty Balkin

Abe Sher
Ruth Kraft
Gloria Sher

Harold S. Gordon
Michelle Gordon

Skipper Feingold
Rachel Krantz & Edward Goldstein

Max & Marian Shapiro
Rita Shapiro

Della Glass
Paul & Janet Leeds

Serena Hammer
Pete & Debbie Katai

Louis Pack
Joanne Pack
Ethel Pack

Steve & Karen Pack

Max & Marian Shapiro
Toby & Walter Robbins

Lechem Fund
in honor of
Leo Shalinsky's BD
Dr & Mrs Harris Winitz

Al Beitchman's 61 yrs. of svc. to Boy Scouts
Mr & Mrs Gary Friedman

Harvey Bodker's Speedy Recovery
Mr & Mrs Jerry Cosner

Gail Goldstein's Speedy Recovery
Dolores Sosnow's New Home
Judy Krug

in memory of
Sadie Lerner
Mr & Mrs Alan Chapman

Ruth Unger
Rowena Turk

Beverly & Harvey Bodker Endowment Fund
in honor of

Harvey Bodker's Speedy Recovery
Rhea Salasche & Harold Kaseff

Building Fund
in memory of

Hyman S. Rosen
Marion L. Rosen
Samuel Rosen

Russell Raskin
Helen Raskin
Marlene Shulkin

Cemetery Maintenance Fund
in memory of

Diana Silverman
Mr & Mrs Harry Merson

Harold Berkowitz
Marian Berkowitz

Beatrice Mindell
Judith Droskin

Eleanor & Joseph Kopin Endowment Fund
in memory of

Max Kopin
Mr & Mrs Michael Goldstein

Eugene & Shirley Novorr Tots for Torah Fund
in memory of

Stuart Levinson
Lori Passman

Florence & Meyer A Kaplan Sukkot Festival Fund
in honor of

Regina Pachter's Speedy Recovery
Florence Kaplan

Helen Rae & Sydney Cerier Teacher Development Fund
in memory of

Sylvia Manko
Sol Segal
Helen Rae Cerier

Jacob H & Rose Levine Teacher Development Fund
in honor of

Alan & Linda Cohen
Mr & Mrs Peter Newman

in memory of
Jane Klaiber
Mr & Mrs Peter Newman

Joel Polsky USY Fund
in memory of

Robert Friedman
Hannah Siegel
Mr & Mrs Jimmy Rosenbloom

KCUSY Fund
in memory of

Jeanette Harrison
Mr & Mrs Bernard Ullman

Dr & Mrs Floyd Freiden
McDowell, Rice, Smith & Buchanan P.C.

Mr & Mrs Fred Burress
Mr & Mrs Joel Friedman

Mr & Mrs Michael Azorsky
Mr & Mrs Ken Lechter

Marcia Karbank & Joseph Smuckler

Kiddush Fund
in honor of

Rabbi Alan Cohen
Mr & Mrs David Weinstein

Leo Shalinsky
Mr & Mrs Norman Bresel

Phyllis Snitz's Speedy Recovery
Mr & Mrs Norman Bresel

Leo Shalinsky Second Bar Mitzvah
Michael & Barbara Katz's 37th Ann

Ben & Debra Rubin's 53rd Ann
Doug Alpert
Rhea Salasche & Harold Kaseff

in memory of
Mina Nisenkier
Mr & Mrs David Burnstein

Leo & Ida Rose Feingold Nursery School Fund
in memory of

Skipper Feingold
Mr & Mrs Gregory Block

Leon & Miriam Cohen Torah Repair Fund
in memory of

Wm K. (Bill) Cohen
Judie Becker

Louis & Edith Pinsky
in memory of

Louis Pinsky
Edith Pinsky

Mallin Childhood Enrichment Fund

in memory of
Esther Mallin
Mr & Mrs Jeffrey Mallin

Esther Gilgus
Pearl Gilgus
Sarah Weinstein
Alex Mendelson

Jennie Mendelson
Gary Stein
Mr & Mrs Larry Mallin

Miriam Romotsky Tay Sachs Fund
in honor of

Harold Price's BD
Mr & Mrs Gary Cortés

Gary & Debby Cortés 49th Ann
Mr & Mrs Harold Price

Polsky Religious School Fund
in memory of

Madeline Kapel Chapman
Mr & Mrs Neil Newman

Prayer Book Fund
in memory of

Joseph C. Glaser
Anna Moskovitz Glaser
Dr & Mrs Charles Bernstein

Alexander F. Muller
Mr & Mrs Max Muller

Rabbi Cohen Discretionary Fund
in appreciation of

Rabbi Alan Cohen
Dr & Mrs Allan Reichman

in memory of
Sol Kopitnick
Shirley Malashock

Rose & Sol Stollowy Fund
in memory of

Esther Bitner
Pauline Fish

Rose Evelyn Sporn Primary Book Fund
in honor of

Sara Mittelman's 95th BD
Gerri Salvay's 90th BD

Inez Kaufman
in memory of

Jim Kunellis
Inez Kaufman

Rose Family Early Childhood Education Center
in memory of

Susie Shultz
Mr & Mrs Edward Rose

Skipper Feingold

Mr & Mrs Randal Adler
Miriam Krantz

Rose S Levine & Doris I Flam Arts & Education Fund
in honor of

Leo Shalinsky's Second Bar Mitzvah
Mr & Mrs Milton Adler

in memory of
Skipper Feingold
Tiberius & Carla Klausner

Todd Clauer & Mirra Klausner

Gertrude Pasmanik
Rae Marie Pasmanik de Ibarra

Sam & Esther Daniels Prayer Book Fund
in honor of

Phyllis Green's 75th BD
Mr & Mrs Robert Daniels

Sarah's Family Fund
in memory of

Mina Nisenkier
Mr & Mrs Marvin Goldstein

Judy Esrig
Mr & Mrs Marvin Goldstein

Mr & Mrs Richard Silberg
Mae Marder
Judith Wasserman

Sidney Ginsburg Endowment Fund
in memory of

Stan Goodman
Dorothy Hartung

Stewart Farbman
Jane Goodman

Norman Apple
Ben Schanzer
Jane Goodman & Family

Sol & Ruth Dennis Scholarship Fund
in memory of

Golda Rosen
Nathan Rosen

Tillie & Jack Kay Scholarship Fund
in memory of

Jack Kay
Mr & Mrs George Lieberman

Walter & Anita Loeb Scholarship Fund
in memory of

Bertha Pender
Anita Loeb

Editorial Comments

The Scroll extends its deepest sympathy to Steve Feinstein upon the loss of his beloved wife, Jane Klaiber. Jane was an active member of *The Scroll* committee, and she accepted each assignment with great enthusiasm. She liked nothing better than interviewing people and writing about them. In her last article about volunteers in the June Scroll, Jane talked about her volunteer efforts and stated, "I'm able to contribute, and that's what is important to me." I will miss Jane's warmth and vitality and the wonderful articles she wrote for the Scroll.



Bev Newman
Scroll Editor

Sweet Spaghetti Casserole

8oz spaghetti
1 can tomato soup
1/2 can of water
Medium onion chopped
2 tbsp butter
1 tbsp brown sugar
1/2 cup cheddar cheese



Sauté onions in butter, add the soup and water and simmer for 20 minutes. Add brown sugar to mixture and stir together.

Boil the spaghetti as directed and mix with the above ingredients. Pour in a greased 2 quart casserole. Put cheese over the mixture and bake at 350°.

Family recipe

Our Community

"Day of Discovery" Kicks Off Year of Jewish Learning

"Day of Discovery – Explore the Joy of Jewish Learning in Kansas City" will be from 8:45 a.m. – 2:45 p.m., at the Jewish Community Campus on Sunday, August 26. Study with the community's finest Jewish educators, rabbis, and cantors, leading sessions on a wide range of topics.

Registration and continental breakfast begin at 8:45 a.m. Study sessions begin at 9:30. Lunch will be served from 12:15 – 1:00 p.m. and a dessert reception will conclude the day. Registration starts in early August.

The program is co-sponsored by The Rabbinical Association of Greater Kansas City, Jewish Community Center's Department of Jewish Life and Learning, CAJE/Jewish Federation of Greater Kansas City, Hyman Brand Hebrew Academy, Village Shalom and area congregations.

For more information, visit www.kcrabbis.org or contact Annette Fish, Administrator/Program Director, Rabbinical Association of Greater Kansas City, at afprogram@aol.com or at 913-327-4622.

Selichot program

Beth Shalom will participate in the community-wide Selichot program and service on Saturday, September 8, at Congregation Beth Torah, 6100 West 127th Terrace. The Selichot service will begin at 10 pm and is designed to help worshippers begin to spiritually prepare for Rosh HaShanah and Yom Kippur. Prior to the Selichot service, a dessert reception will begin at 8:15 and will be followed at 8:45 by Havdalah. At 9 pm the keynote speaker, Alan Morinis of the Mussar Institute will discuss: "The Experi-

Community-wide Course:

"Judaism for Conversion Candidates"

Begins in the Fall

The Rabbinical Association of Greater Kansas City will offer a community-wide course, "Judaism for Conversion Candidates" beginning in August. Rabbis from the Reform, Conservative and Orthodox movements will teach classes, and the location will rotate among the synagogues. Classes will meet on Thursdays from 7-9 pm. Students will need to secure a congregational rabbinic sponsor by November 1 and meet the conversion requirements developed by their rabbinic sponsor.

An orientation session is August 16, 7:30-8:30 pm at the Jewish Community Campus. The fee for the course is \$250 per person including course textbooks. For additional information or to register for this course, visit kcrabbis.org or contact Annette Fish, Rabbinical Association Administrator/Program Director, at afprogram@aol.com or 913-327-4622. Aaron Nielsenshultz is the course coordinator and Rabbi Mark Levin is the Rabbinic coordinator.

Funding for this program is generously provided by The Jewish Heritage Foundation of Greater Kansas City.

ence of Yirah as the basis for a Prayerful Life." "Yirah" is a term that describes a combined feeling of awe, reverence and fear all rolled into one. The goal of Mussar practice is to release the light of holiness that lives within the soul. Alan Morinis is considered one of the premier Mussar teachers in North America. Visit kcrabbis.org for additional information, or contact Annette Fish at afprogram@aol.com or 913-327-4622 if you plan to attend.

Congregational-Wide Events - See each department for their activities

Sunday	Monday	Tuesday	Wednesday	Thursday	Friday	Saturday
			1	2	3	Shabbat Nachamu 4
			13 Av	14 Av	15 Av 8:09 Shabbat Shalom	16 Av 9:06 Havdalah Shavuah Tov!
5	6	7	8	B'nei Mitzvah Parents Mtg 7 pm 9	10	Birthday Shabbat 11
17 Av	18 Av	19 Av	20 Av	21 Av	22 Av 8:01 Shabbat Shalom	23 Av 8:58 Havdalah Shavuah Tov!
12	13	Kickball 14	15	16	17	Anniversary Shabbat Stella Shapiro Bat Mitzvah 18
Steppin' Out 6 pm B'nei Mitzvah Parents Mtg 7 pm	Board of Directors Meeting 7:30 pm	KCUSY Alumni Lunch & Kickball 11 am 26 Av	27 Av	28 Av	29 Av 7:52 Shabbat Shalom	30 Av 8:49 Havdalah Shavuah Tov!
19	20	21	22	23	24	25
Back to Shul/ Open House Picnic 5 pm 1 Elul	2 Elul	3 Elul	4 Elul	5 Elul	6 Elul RFECEC Visiting Day 10 am 7:43 Shabbat Shalom	7 Elul Jaiden Nye Bar Mitzvah 8:39 Havdalah Shavuah Tov!
26	27	28	29	30	31	1
8 Elul	9 Elul RFECEC School Starts Banishing Bullying Workshop 9 am	10 Elul	11 Elul PRS School Starts Banishing Bullying Workshop 9 am	12 Elul	13 Elul 7:32 Shabbat Shalom	14 Elul Samuel Galapo Bar Mitzvah, 9:30 am Sophie Levine Bat Mitzvah, 5:30 pm 8:29 Havdalah Shavuah Tov!

Candle Lighting Blessing

ברוך אתה ה' אלקינו מלך העולם אשר קדשנו במצותיו וצונו להדליק נר של שבת.

Barukhi ata Adonai Eloheinu melekhi ha'olam, asher kiddeshanu b'mitzvotav vetzivanu lehadlik ner shel Shabbat.

August Service Schedule

Weekdays Village Shalom

Minchah: **Sunday-Thursday** 6 pm
Shacharit: **Monday-Friday** 7 am

Shabbat CBS

Kabbalat Shabbat: **Friday** 6 pm
Main Service: **Saturday** 9:30 am
Library Minyan: **Saturday** 9:30 am
Tots for Torah: **Saturday** 9:30 am
B'Yachad: **Saturday** 10 am
Minchah: **Saturday** 1 pm
Shacharit: **Sunday** 8:30 am

Continuing through the end of September, Shabbat Minchah services will be moved from 6 pm Saturday to 1 pm Saturday. This will be an experiment to evaluate Shabbat afternoon attendance.



Shabbat Services and Sunday morning Shacharit will be held at CBS, 14200 Lamar
Weekday Minyan will be held at Appleman Synagogue, Village Shalom, 5500 W. 123rd St.



Congregation Beth Shalom

14200 Lamar • Overland Park, KS 66223

www.bethshalomkc.org

Office: 913-647-7279 • Fax: 913-647-7277

CONGREGATION Beth Shalom

David M. Glickman, *Rabbi*

Alan L. Cohen,

Rabbi Emeritus

Morris B. Margolies, Ph.D.,

Rabbi Emeritus

Elaine Levine, *Executive Director*

Patti Kroll, *Coordinator, PRS*

Judy Jacks Berman, *Director, RFEC*

Michael Abrams, *President*

Bev Newman, *Scroll Editor*

Martha Hoffman, *Scroll Design*

The Congregation Beth Shalom Scroll (USPS531-420) is published monthly by Congregation Beth Shalom, 14200 Lamar Ave., Overland Park, KS 66223. Annual Subscription \$24.00. Periodical Postage Paid in Shawnee Mission, KS. **DATED MATERIAL**

POSTMASTER: Send address changes to CONGREGATION BETH SHALOM SCROLL, 14200 Lamar, Overland Park, KS 66223. Scroll Deadline: The 1st of the previous month. Submit articles to the Administrative office before the deadline.

Congregation Beth Shalom, an egalitarian Conservative synagogue, is a welcoming community of individuals from diverse backgrounds, strengthening connections with God, Torah and the Jewish people through communal commitment to prayer, study and acts of loving kindness.

Looking Ahead:

Sukkot Dinner
Friday, October 5

Save the Date
Dancing with the Stars
March 9, 2013

Order Your Mitzvot Ticket

For each \$100 contribution you make, you will receive a ticket for your chance to win \$10,000.

Join the Scroll Team

We welcome your talents. We need a copywriter and several proofreaders. Let us know if you can work with us once a month for an hour. Send an email to scrolleditor@bethshalomkc.org.

PRS - school starts soon. Student enrollments are due.

Office Hours:

Monday - Thursday 8:30 am-5 pm
Friday 8:30 am-3 pm
Closed on Federal Holidays

Mt. Carmel Cemetery Hours:

Monday & Wednesday 8 am-4 pm
Tuesday, Thursday Closed
Saturday Closed
Friday & Sunday 8 am-4 pm
National Holidays 9 am-4 pm
Exceptions: Thanksgiving, New Year's Day & Christmas Day
Jewish Holidays Closed

Sisterhood Gift Shop Hours:

Hours: Summer Hours
Monday-Thursday: 10 am-12:30 pm
Friday 10 am-12 pm
Sunday by appt.
Call 913-647-7298

STEPPIN' OUT RETURNS AUGUST 12

Chris Foster, accomplished guitarist, singer and songwriter will entertain at Steppin' Out on Sunday, August 12 in Goldsmith Hall. The evening begins with dinner at 6 pm. For more information, refer to your July Scroll.



Meet our Cemetery Staff:

Bob Pratt and Jim Jones are showing their new uniforms, donated by Walker Towel and Uniform Service. These two men caretake Mt. Carmel throughout the year.



We Need You! Do an Easy Mitzvah!

Make calls for us for Yahrzeit reminders on Sunday evenings. We need to insure that we have 10 people for a minyan. If interested, contact Marlene Katz at storytime@kc.rr.com or 913-681-0840.

