

Sunday, April 12th at 6:30 PM  
**Come to the**  
**CABARET**








Cocktails  
 Heavy Hors D'oeuvres  
 Dessert

Single	\$ 27
Couples	\$ 54
Teens	\$ 18
Table of 8	\$360

Natasha Olinetchouk • Victor Wishna • Chuck Gasser • Jacob Flekier • Hazzan Ben-Yehuda • Beth and Lee Albee

Members and Community invited  
 Call CBS to sign up  
 913-647-7279.  
 Limited Seating

## Scholar-in-Residence Weekend May 1-3: "Amazement, God and Human Dignity" with Rabbi Shai Held

Rabbi Shai Held is Co-Founder, Dean, and Chair in Jewish Thought at Mechon Hadar, where he directs the Center for Jewish Leadership and Ideas (CJLI). His book, *Abraham Joshua Heschel: The Call of Transcendence* was published by Indiana University Press in the fall of 2013. His weekly essays on the Torah are read by thousands of people around the world. Rabbi Held is one of the most exciting young rabbis teaching and working today. We hope that you join us for this exciting weekend.



**Friday, May 1: Kabbalat Shabbat Service 6:00 pm, Dinner at 7:00 pm, Lecture at 7:45 pm**

Rabbi Held will speak after dinner (\$18 adults; \$10 children – please RSVP to Natasha Olinetchouk at [NatashaO@bethshalomkc.org](mailto:NatashaO@bethshalomkc.org)) on **Why Amazement Matters: Abraham Joshua Heschel's vision of Jewish Theology and Spirituality.**

**Saturday, May 2:**

Rabbi Held will speak at the conclusion of services (around 11:30 am) on **Waiting for God: Living with God in a Godless World.** Gratis Kiddush Luncheon following services. Please RSVP to Natasha at [NatashaO@bethshalomkc.org](mailto:NatashaO@bethshalomkc.org) if attending.

**Sunday, May 3, 9:30 am – 11:00 am:**

Rabbi Held will teach in a Community-wide Beit Midrash at the Jewish Community Campus that will feature interactive learning titled, **Flipping self worth on its head: teaching our children about dignity and worth.** Light gratis breakfast available from 9:00 – 9:30 am. There will be a recognition of Melton Graduates at 11:00 am.

Rabbi Shai Held Scholar-In-Residence Weekend is a cooperative program sponsored by Congregation Beth Shalom, HBHA, Melton@HBHA, The Rabbinic Association of Greater Kansas City, as well as generous funding from the Leonard Hershman family.

# From the Rabbi's Study

## A Theme for Seder: Passover



It is not uncommon to have themed seders. After all, can't the same story and the same words get boring and tired after a while?

There is a reason, however, why we repeat the same words and the same story over and over again. It is not for the purpose of boredom, or simple repetition - it is because there are eternal truths in the Passover story that constantly demand our attention. Many of these themes - such as redemption from bondage - synthesize well with genuine social ills that still plague our society.

It is easy, though, to create a Seder of "slacktivism" instead of a Seder of meaning. "Slacktivism" is a term that I learned about during the ALS ice-bucket challenge from last summer. It is the tendency to "click" a website, "like" a Facebook page, or "retweet" a #hashtag in order to raise awareness - without really creating the transformation one desires to see in the world.

## Todah Rabah Paul Flam Family

Paul Flam's, z"l, memory will be honored at Yizkor Services on Shabbat, April 11. He endowed our congregation with a very generous donation. Members of Paul's family will be in attendance at Shabbat services.

## Rimon Celebration



The text of the seder - if tasted, explored and digested as thoroughly as the festive meal - can be the fuel that propels us into a life of meaning, as well as a life of true action. The action, though, takes place after the seder. The seder provides us the spiritual fuel to act in the world.

There was a sign in my favorite synagogue in Jerusalem that read in Hebrew and English: "If you are talking here - where do you pray?" To align that question with the seder: "If you are only discussing today's problems at Seder - where do you discuss being on a spiritual journey, and being on a personal and national exodus from slavery to freedom?"

Seder is the one time of the year where as a family and community, we get to ask ourselves the hardest existential questions in an intimate setting around a table.

The question in the Torah that is the basis for the questions of the Four Sons is *Mah Ha-Avodah Ha-zot Lachem* - "What is this worship to you?" What is the bondage we need to

leave to discover true "*avodah*" - worship; and where do we need to point ourselves on our spiritual journeys to be heading there?

*David M. Glickman*

**Rabbi David M. Glickman**

[dglickman@bethshalomkc.org](mailto:dglickman@bethshalomkc.org)

## Adult Education Opportunities

Join us for the last Talmud Jam of the year in May. Details to be announced.

### April 18

The Parashat Hashavua Group meets at 9:00 am in the conference room for a great opportunity for a deep discussion of the Weekly Torah Portion, including the Kabbalistic and traditional insights. The group will discuss Parashat Shmini.

### April 16, 23, 30

Sarah Peltzman Adult Education Classes will meet at 10:00 am in the conference room.

For more information, contact Berenice at [rbhaberman@everestkc.net](mailto:rbhaberman@everestkc.net) or Milisa at [mflekier@gmail.com](mailto:mflekier@gmail.com).

## Steppin' Out Welcomes Scott Duncan

Steppin' Out will be held May 3, at 6:00 pm, in Goldsmith Hall. The entertainment will be Scott Duncan, acoustic guitarist and vocalist.

For more information, see your March *Scroll*. Please mail your check for \$15 per person, along with your

contact information, to CBS, Attn.: Steppin' Out, 14200 Lamar, Overland Park, KS 66223.

Reservation deadline is April 20. For further information, contact Linda Lessner, [lessner@kc.rr.com](mailto:lessner@kc.rr.com) or 913-897-0122.

Israeli salad, and veggies. We encourage middle and high school students and their parents and grandparents to participate, along with everyone in the congregation.

Cost is \$8 per person or a family of 4 for \$25. To RSVP, email Martha Hoffman, [mhoffman@bethshalomkc.org](mailto:mhoffman@bethshalomkc.org) or call 913-647-7283.

# Executively Speaking

## You Are Invited to Share Your Story



Most of us are familiar with the old adage: The Jewish people are known as "the people of the book".

Basically, this refers to the fact that every single Jew is commanded to know the Torah. The study and knowledge of Torah was commanded to us through Moses, and it is the rightful inheritance of every one of us.

But, it's about more... many of us have an innate love of reading. We love to hear about and share each other's stories. Our stories are a major part of our DNA.

Our life stories, sad and joyful, challenging and hopeful, have helped

to shape us into the Jewish people that we are today.

I have recently written the story of my grandson's birth from utero through his first year of life. I recounted through photos and memories his birth story; I called it "The Cory Story". It was heartfelt and poignant, written with love. Someday he can look back to see where his life began. Cory's Jewish journey is just beginning; his book has many pages waiting to be filled as he grows.

Many of us have a story to tell, chapters in our lives that can fill volumes. So after speaking with Bev Newman, our *Scroll* editor, we decided that it would be great to have a new

column each month that tells your story.

Your story can be an exploration of your heritage. It can be about an experience in your life that shaped your Jewish identity. It can be about someone who inspired you to be a better person. It can be the story of a loved one present or passed.

Send your 250 word story to Bev Newman; at [taxwife@aol.com](mailto:taxwife@aol.com). CBS reserves the right to edit contents. You can inspire others by your words, so please share your story with us. From my home to yours,  
Happy Passover.

**Elaine Levine**

[elvine@bethshalomkc.org](mailto:elvine@bethshalomkc.org)

## Create Your Jewish Legacy

*"We did not find this world desolate when we entered it. As our ancestors planted for us before we were born, so do we plant for those who will come after us:" Ta'anit 23a*

On Shabbat morning, April 18, we will be recognizing members of our congregational family who are planting for the future by making a bequest or other planned gift to Beth Shalom.



Join us in saying thank you and celebrating their generosity at a special Kiddush luncheon in which a Beth Shalom couple is coming out of retirement to prepare the feast in conjunction with the Kiddush

Corps to honor our planned givers. Consider making your own gift, as well. No matter what your financial means, you can help ensure a bright and dynamic future for Beth Shalom by:

- Making a gift today of cash or long-term appreciated securities
- Making a gift today that will pay you income
- Making a bequest in your will or trust
- Naming Beth Shalom as a beneficiary of a life insurance policy or retirement plan

Beth Shalom is a very special place with a long and beautiful history. It is where you have been educated, lived your Jewish values, developed life-long friendships, made fond memories, and where you have turned for strength, support and celebration. Your planned gift today can help ensure Beth Shalom for tomorrow.

For more information, contact Harold Kaseff, Chair, Beth Shalom's Planned Giving Committee at [Harold.k@mymetrotitle.com](mailto:Harold.k@mymetrotitle.com) or 913-859-0530.

## Youth & Informal Education

**Stefanie Williams, Director | [swilliams@bethshalomkc.org](mailto:swilliams@bethshalomkc.org) | 913-647-7292**

Dear EMTZA,

We accept the fact that we'll have to schlep all the way to Iowa for this convention. But we think you're crazy if you don't come to Spring Kallah 2015. You'll see EMTZA as you want to see us... In the simplest terms, in

the most convenient definitions. What we've found out is that EMTZA is the best region in all of USY and Spring Kallah is set to be the best convention ever...Are you excited yet?

Sincerely yours,  
The EMTZA Club

EMTZA! Join The EMTZA Club at Spring Kallah April 17-19, 2015. With everything from elections to Shabbat with your best friends from across the Midwest, we hope to see you there!



# Sisterhood

Beverly Newman, President | [shpres@bethshalomkc.org](mailto:shpres@bethshalomkc.org) |

The sisterhood calendar campaign, our biggest fundraiser, has begun and will run through April 30. All congregants, non-congregant sisterhood members and previous advertisers have been mailed an ad form. The calendar/directory, which is your link to everything happening at CBS, is complimentary to all congregants, non-congregant sisterhood members and advertisers. We need everyone's help to make the



calendar a success. Each ad or tribute, no matter how small, helps achieve that success. When you support

## IntraContinental Regional Conference



Berenice Haberman, Milisa Flekier and Dini Freed will be attending the Women's League of Conservative Judaism IntraContinental Region's annual conference, from April 25 - 28 in Winnipeg MB, Canada.

Dini is the recipient of the sisterhood's Past President's leadership Development Award, and Milisa is one of two women presented with the IntraContinental Region's \$500 Scholarship for 2015. The scholarship program was designed to offer women within our region the opportunity to acquire a more thorough knowledge, understanding and commitment to a vibrant and vital Judaism through participation in Sisterhood programming at the local and regional levels. Berenice will represent our Sisterhood as incoming president.

the calendar ad campaign you are supporting RFECEC, PRS, USY, Sisterhood Shabbat, the Lechem and Chesed Committees, Jewish community programming and local and national Jewish charities. We hope we can count on your support. For more information, contact Calendar Coordinators: Linda Lessner at 913-897-0122 or [llessner@kc.rr.com](mailto:llessner@kc.rr.com) or Bev Newman at 913-338-3441 or [taxwife@aol.com](mailto:taxwife@aol.com).

## Book Club Meets April 29



Sisterhood Book Club will meet Wednesday, April 29, 7:00 pm, at

Gerre Minkin's home. We will discuss *In The Courtyard of the Kabbalist* by Ruchama King Feuerman. For further details about the Sisterhood Book Club or to be added to the e-mail list, contact Linda Lessner at 913-897-0122 or at [llessner@kc.rr.com](mailto:llessner@kc.rr.com).



## Sisterhood Events for April

April 1	Warm Up America!
April 14	Safehome
April 15	Executive Board Meeting
April 16, 23, 30	Peltzman Adult Ed.
April 20	Children's Place
April 22	PrayerWorks
April 29	Book Club



Save the Date

The date is Tuesday, May 19, in Goldsmith Hall when Berenice Haberman will be installed as president of Sisterhood along with other officers, coordinators and board of directors. Succotash Catering will serve a delicious luncheon. There will be a tribute to outgoing president, Bev Newman. Invitations will be in the mail soon.

## Banishing Bullying Behavior

Carol Yarmo is completing three outstanding terms as Sisterhood Community Service Vice-President. During her tenure she organized and led our Banishing Bully Behavior Project that reached both the Jewish community and the general community. Participants' presentations ranged from early childhood to college level through senior citizens under Carol's passionate leadership.

Bev Newman, Sisterhood President, has appointed Blanche Sosland to succeed Carol as chair of the project. In accepting the chairmanship Sosland said, "Unfortunately, the need for the BBB Project is greater today than ever. We recognize that bullying goes far beyond the school-yard. Fifty percent of the students who bully at school are bullied at home by either parents or siblings.

Between ten and twenty percent of senior citizens are bullied in retirement communities or in their own homes. We must continue our work with everyone in both the Jewish and general communities. Although this is a sisterhood project, we welcome all congregants to join us in banishing bullying behavior." Blanche can be reached at 913-488-1116 or [blanche@soslandphoto.com](mailto:blanche@soslandphoto.com).

## Changing With the Times

Today when children enter Kindergarten, basic expectations are much greater than they were in the past. Our children need to know more and be prepared to learn academic skills that 10 years ago were taught in first grade. In response to this change, we raised the bar for our PreK students by extending our hours and introducing a new curriculum.

Our typical day goes from 9:00 am to 1:30 pm Monday through Thursday – and to 12:00 pm on Fridays – so we have time for the new Pre K curriculum without having to

give up our important play, art and Judaic activities. Our new curriculum includes Everyday Math, The Lakeshore Science program and Handwriting Without Tears. For literacy, we are part of a pilot program that is being released by Children's Mercy Speech and Language Department called "Rhyming to Read." This program was co-written by our congregant, Cindy Daniels. All teaching is taught in a hands-on, concrete learning environment.

As an example of our "hands-on" learning environment, RFECEC students have been observed learning

the "sh" sound by writing "sh" using shaving cream. They also learned "greater than" and "less than" using playing cards and dice.

Many of last year's Kindergarten parents told us that their children were well prepared for Kindergarten. In addition, I spoke to a local Kindergarten teacher last week who said our kids are great every year, but this year exceeded her expectations. We are thrilled with our new curriculum! We still have a few openings for fall 2015. Please call Judy Jacks Berman at 913-647-7287 for more information.

## RFECEC Collects Food for Jewish Family Services Food Pantry



RFECEC is a Jewish value based preschool, we were given a perfect opportunity to learn about *chesed*, kindness and *hazan et hakol*, feeding everyone.

The preschool students and their families collected 385.6 pounds of food for the food bank. The children also decorated the grocery bags to make them a little more special. We intentionally had the children bring foods they like and explained they

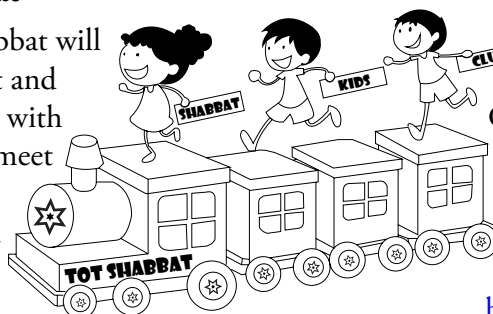


The Jewish Family Services Food Pantry was in need of food. Because

were for children who do not have money to buy food.

## Shabbat Kids' Club & Tot Shabbat

Shabbat Kids' Club and Tot Shabbat will be held on April 18. Both Tot Shabbat and Shabbat Kids club will begin at 11 am with a "pre service nosh". Tot Shabbat will meet in the lower library reading area, and Shabbat Kids Club will meet in Room 114. The two groups will come together for *Ein Keloheinu* and go



upstairs to Goldsmith Hall for *Adon Olam*. Tot Shabbat and Shabbat Kids Club is partially funded by the Eugene and Shirley Novorr Tots for Torah Fund.

For more information, contact Shira Zigler at [shiramichele@yahoo.com](mailto:shiramichele@yahoo.com) for Shabbat Kids' Club or Baree Nottberg at [bnottberg@yahoo.com](mailto:bnottberg@yahoo.com) for Tot Shabbat.

## Friday Night Lights

On Friday, May 8, Friday Night Lights, a family Shabbat event, will be held in Goldsmith Hall. Geared towards "young families", the event begins at 6:00 pm with a kid-friendly Shabbat service led by Rabbi Glick-

man and Hazzan Ben-Yehuda followed by a Shabbat dinner catered by Cathy Levin and culminating with children's entertainment.

Friday Night Lights will partner with the PJ Library, a program under the umbrella of the Jewish Federation,

which gives Jewish books and CDs to young children. Donors will sponsor this program.

For more information and to register for this event, the last one of the school year, contact Mindi Squire at [msquire@bethshalomkc.org](mailto:msquire@bethshalomkc.org).



# CELEBRATING LIFE CYCLE EVENTS

## April Anniversaries

April Anniversaries will be honored on April 18.

To sponsor a Kiddush, contact Jill Goldstein, 913-647-7286.

### Gabrielle Lee Scicchitano

May 4 / 15 Iyar



Gabrielle's parents are Frank Scicchitano and Zvia Zadock-Scicchitano. Her grandmother is Mazal Zadock, Israel. She attends Overland Trail Middle School and has one brother, Dean Scicchitano.

Gabrielle likes to read, dance, and watch TV. She's very social and loves to listen to One Direction and Five Seconds of Summer. Gabrielle's Mitzvah Project is recycling at Beth Shalom. Relatives and friends are invited to worship with the family at 7:00 am for the Shacharit Service at Village Shalom Appleman Synagogue.

### The Mitzvah Garden Needs You

The Mitzvah Garden of Greater Kansas City is a community gardening project that involves people of all ages throughout our Jewish community to raise produce for those in need. The garden welcomes Chavurah groups as well as individuals to participate in planting, weeding, delivering produce and general maintenance throughout the garden season, April to October. The usual workday is Sunday, but help is also needed during weekdays. The garden is located behind Congregation B'nai Jehudah.

For more information please contact the volunteer coordinator, Gay Handler at [grhandler@mindspring.com](mailto:grhandler@mindspring.com) or 913-345-1118.

### Mount Carmel Volunteer Day

Please join us Sunday, April 26, from 12:00 pm to 4:00 pm, as we spend the day painting, cleaning, weeding, raking and more to help beautify Mt. Carmel Cemetery; 5529 Ditzler Road in Raytown, Missouri.

This is an excellent opportunity for those looking to perform community service. In case of inclement weather the rain date will be Sunday, May 3rd.

For more information or to sign up, contact Bruce Luchen at 913-220-7518 or [bluchen6297@aol.com](mailto:bluchen6297@aol.com).

Day		Years
2	Steven & Diane Azorsky	26
2	Harold & Renee Fuchs	60
2	Ronald & Susan Goldsmith	48
2	Matthew & Rhea Nadler	20
2	Peter & Amy Shapiro	20
3	Floyd & Bari Freiden	44
3	Norman & Marcia Horwitz	60
4	Stanley & Marlene Katz	61
5	Mark Eisemann & Leslie Mark	28
5	Robert & Bette Grossman	34
7	Harold & Natalie Klopfer	58
7	Bernard & Ella Ullman	52
7	Joe & Fran Wolf	52
8	David & Carol Porter	20
8	Steven & Marcia Schorr	43
9	Randall & Elyse Block	37
20	Sanford & Ida Levine	30
22	Sid & Nan Kanter	41
29	Clarence & Alice Winer	59

## Mazal Tov to...

**Ellie Bodker**, daughter of **Fred & Cindy Bodker** and granddaughter of **Harvey Bodker** upon being elected International Vice President of BBYO.

**Gay Handler & David Handler** for receiving the Mitzvah Garden KC's Golden Trowel Award.

**Allan & Nancy Reichman** upon the engagement of their son, Michael Reichman to Elizabeth Erenberg.

**Gabi Cabell**, the daughter of **Peter & Joan Cabell**, who is the recipient of the 2015 CBS Sanford Dunn Scholarship Award for study in Israel.

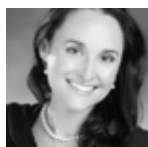
**Yale Winston**, the son of **Bruce & Susan Winston** who has earned his Eagle Scout rank.

**Eli Kahn**, the son of **Michael & Staci Kahn**, who has earned his Eagle Scout rank.

**Joan March** upon the graduation of her granddaughter, Rachel Esther Salle, from the University of Michigan.



## A Myriad of Spring Holidays



We are now in the spring holiday season, and while you may think that our really intense holiday season is in the fall, there is a strong argument to be made for the spring being just as intense! Purim opens the thoughts of our freedom, about how we fight for it ourselves, and God's role in our past struggles for freedom as well as our modern struggles. Purim alerts us to the coming of Pesach, and Pesach is the bridge between the ancient redemption of our people from Egyptian slavery, and the modern redemption of the surviving fragment of European Jewry and the rebirth of the Jewish state. Pesach is immediately followed by Yom HaShoah, Yom HaZikaron and Yom HaAtzma'ut. We will host our own commemorations of Yom HaShoah and Yom HaZikaron / Yom HaAtzma'ut within our CBS community. Both commemorations fall on Wednesdays, when Hebrew School is in session, and we are inviting parents and anyone else who wishes to come join us. The Yom HaShoah program for all PRS students in grades 5 and up will take place at Village Shalom on April 15 from 5:30 to 6:00 pm and will dovetail into the Community Minchah Service at 6:00 pm that ends at about 6:20 pm. Yom HaZikaron transitions into Yom HaAtzma'ut on Wednesday evening, April 22. Our student body will have a special program at CBS from 5:30 to 6:15pm. Students of all grades as well as parents and grandparents are invited to attend. There will be special music, a video presentation and sweets to celebrate Israel's 67th birthday!

**April 2** Last day of Thursday Hebrew High classes  
**April 5 - 11** Pesach – No classes for PRS  
**April 12** PRS resumes

## Sixth Grade Pre B'nei Mitzvah Seminar

The final 2014-15 session of pre-B'nei Mitzvah seminars will take place from 9:30 to 11:00 am, on Sunday, April 12, in room 108-09. This session is required for all 6th grade HBHA and PRS students and their parents/guardians. The topic for this third class will focus on the proper wearing of tallit and tefillin. Students and parents will study the origin of these ritual items with the clergy and then have a demonstration of putting them on properly along with the opportunity to do so themselves. For more information, or to confirm attendance, call Jill Goldstein, Ritual Coordinator, at 913-647-7286.

## Confirmation Class Shabbat, April 25



A lifecycle ritual that occurs when a child is 16, is completing 10th grade, and celebrates confirmation of Jewish faith, Confirmation focuses on a community of young adults affirming their commitment to and communal participation in Judaism and Jewish living. On Shabbat, April 25 the following students will be confirmed:

Sheli Cohen ..... daughter of Benny & Stephanie Cohen  
Josh Eisemann ..... son of Mark Eisemann & Leslie Mark  
Sophie Levine ..... daughter of Jay & Katharine Levine  
Jonah Pellegrino ..... son of Vincent & Marcy Pellegrino  
Ellie Schneider ..... daughter of Alan & Julie Schneider  
Emma Shapiro ..... daughter of Peter & Amy Shapiro  
Davi Sher ..... daughter of Scott Sher & Anne Rosenthal  
Elie Simon ..... daughter of Richard & Connie Simon  
Abigail Wordsworth ..... daughter of Jeffrey & Jamie Wordsworth

The Confirmands will be reading Torah and leading the Torah service and Musaf. The Confirmation families are hosting a sweets table at Kiddush. Not pictured are Josh Eisemann and Abigail Wordsworth.

## The Florence Melton School of Adult Jewish Learning

### Modern Living: Maintaining Balance, Discovering Ageless Answers in Timeless Jewish Texts

Come explore Jewish learning on maintaining balance in life in a relevant and interactive atmosphere. You will look at what our sages say about our obligations to our family, our work and community and ourselves.

Classes are taught by Marla Brockman and meet on April 17, 24 & May 1, 8, at the Hyman Brand Hebrew Academy from 9:30 - 11:00 am. Tuition is \$60 including materials. Register by contacting Annie Glickman at [aglickman@meltonschool.org](mailto:aglickman@meltonschool.org).

## Of Blessed Memory

We express condolences to our Beth Shalom Members, their Families and Friends.

**Sara Lerner, z"l**, February 28 - 9 Adar

**Dorothy Peltzman, z"l**, February 28 - 9 Adar

**Phyllis Jean Brown, z"l**, March 4 - 13 Adar

**Cary Lieberman, z"l**, March 5 - 14 Adar

**Barbra Elaine McKee, z"l**, March 8 - 17 Adar

**Judith Mark, z"l**, March 5 - 14 Adar

**Rita Roth Poisner, z"l**, March 9 - 18 Adar

**Brian Allan Salvay, z"l**, March 11 - 20 Adar

**Jennette Dobrowski, z"l**, March 15 - 24 Adar

## Yahrtzeits

Join us for morning or evening minyan to say Kaddish for your loved one. See service schedule, page 11.

### 12 Nisan - April 1

Gerta Baruch  
Anna Baum  
Hanna Bernstein  
Rose Mallin Bortnick  
Morris J. Ellis  
Abraham Epstein  
Arthur H. Herzmark  
Fannie Karbank  
Sarah Katz  
Harry Lipsky  
Helen Parness  
Max Partnoy  
Bessie Rosengarten  
Arnold Schoolman  
David Singer  
Minnie Solomon  
Phyllis Wainstock  
Morris Weinberg

### 13 Nisan - April 2

Barney L. Allis  
Saul Baum  
Ann Brotsky  
Louis Chaiken  
R. Robert Cohn  
Lena Eaglstein  
Benjamin Feinberg  
Abraham Goldman  
Alan Gould  
Susie Peltzman  
Ann Rolsky  
Katie L. Rosenberg  
Lena Lee Sherman  
Kenneth Simon  
Nathan Wexler  
Helen Faye Winer

### 14 Nisan - April 3

David Blumkin  
Mindel Burstein  
Esther Molly  
Copelman  
Alvin Jackson  
Helen F. Krashin  
Phillip Magazine  
Beatrice G. Nicholas  
Ira Rosenblum

### 15 Nisan - April 4

Ray Brodie  
Dora Gaba  
Jack Geller  
Ben Gibian  
Bela Kent  
Sol Mallon  
Abraham N. Marks  
William Meyer  
Nowick

Regina Plattner

Ida Sapirstein

Jennie Siegelbaum

Harry Louis Supofsky

### 16 Nisan - April 5

Bessie E. Benjamin  
Sandra Bock  
Arthur Braverman  
Sam Dubinsky  
Doris Flam  
Leah Ray Grollman  
Frances R. Gross  
James Levinson  
Hillel Litman  
Gertrude Rabinowitz  
Roberta Schlozman  
Annie Shafton  
Estelle Leah Traxler  
Toby Waldner  
Joseph Waxman

### 17 Nisan - April 6

Jack Alpert  
Sam A. Cohn  
Eric Dollman  
Abe Eisen  
Leo Goodman  
Joseph Hartman  
Rebecca Kleiman  
Richard Earl Krigel  
Madeleine Markowitz  
Ida Miller  
Ann Phillips  
Nathan Price  
Gertrude Rosenberg  
Shirley Seiden  
Bertha Simon  
Herbert Swartz  
Rosie Tabolsky  
Eugene Taxman  
Fannie Vigder  
Louis Wilk

### 18 Nisan - April 7

Irving Baum  
Phillip Bretton  
Melvin Brown  
Isaac Ellis  
Rose Finkelstein  
Sydney Ginsberg  
Harris Greenberg  
Julius Meyer Lerner  
Edith Schwartz

### 19 Nisan - April 8

Joseph Adelman  
Abe Baier  
Joseph A. Barrish  
Leonard J. Brooks

Eve Fichman  
Samuel Ginden  
Maurice Goldberg  
Leah Jacobs  
Rose Katz  
Elias Koralchik  
Helen Markowitz  
Louis Passman  
Joseph William Pucker

### 20 Nisan - April 9

Henry Cumonow  
Annie Glaser  
Rachmiel Goller  
Esther Himmelstein  
Elsie Hipsh  
Ben Kaufman  
Reva Kort  
Evelyn Lerner  
Abraham Pinsker  
Theodore Silverman

### 21 Nisan - April 10

Helyne Cohan  
Marian Durbin  
Sol Forman  
Hannah Freed  
Leah N. Friedman  
Isadore Gale  
Samuel I. Goldstein  
Sam B. Hoffman  
Paul Hoffman  
Vera Levitch  
Lottie Rothberg

### 22 Nisan - April 11

Anna Baellow  
Minna Berger  
Goldie Bovos  
Ethel Cohn  
Mary Davidson  
Samuel Baer Devins  
Egon E. Fisher  
David Glass  
Harry Kaplan  
Rose Karbank  
Dorothy Kreitzman  
Gertrude Rostov  
Charles Schere

### 23 Nisan - April 12

Sam C. Bornstein  
Ida Dunn  
Florence Friedson  
David Goodrich  
Abraham Katz  
Sol Koralchik  
Shirley Leibson  
Hannah Rosen  
Harry Schoen

### 24 Nisan - April 13

Emma Bernstein  
Frank Blender  
Marian Cohen  
Sarah Copaken  
Joseph Friedson  
Gertrude Greenberg  
Betty H. Herzmark  
Jennie Jacobs  
William A. Kaiser  
Abe G. Kohn  
Esther Krebs  
Max Loeb  
Harris Neusteter  
Golda Ann Ruback  
Miriam Rubenstein

### 25 Nisan - April 14

Adolph Gero  
Ethel Goldblatt  
Shirley Goller  
Slava Baraban  
Hershman  
Joseph C. Kanter  
Izzye Stevens

### 26 Nisan - April 15

Nathan Baraban  
Jake Berman  
Harris Wolf Cohen  
Anna Eagles  
Charles Frohlichman  
Louis Gordon  
Bert Graetz  
Harry Levin  
Samuel L. Levy  
Lillian Lieberman  
Anna Mann  
Marie Oliver  
Jay R. Rosenbloom  
Hyman Skoler

### 27 Nisan - April 16

Dora Fryzer  
Julius Goldberg  
Harold S. Gordon  
Lawrence Jaben  
Esther Kely Lerner  
Max Marshock  
Joseph Polsky  
Harry T. Rosfeld  
Morris Schlozman  
Rosalie Siegel  
Benjamin Silverman  
Evelyn Epstein Simons  
Samuel Weneck

### 28 Nisan - April 17

Nathan Apple  
Israel Blond

Harry Clemage  
Meyer Fish  
Libbie Galler  
Bess Hanick  
Sam A. House  
Harold Katz  
Zacharias Merser  
Edith E. Rubin  
Abraham Shapiro  
Hyman Widlansky  
Guss Zeldich

### 29 Nisan - April 18

Rae Aaronson  
Harry Aronson  
Randy Blatt  
Elias Bondell  
Sophie Chaitman  
Maurice Cohen  
Shirley Gish  
Chiel Goodhart  
Jacob Hyman  
Joseph Landman  
Rose M. Laner  
Elizabeth Sandler  
Henry Shapiro  
Ben Simon

### 30 Nisan - April 19

Norman Becker  
Rose G. Clayman  
Leah Denowitz  
Fannye B. Feld  
Charles Elliot Fishman  
Sidney Ginsburg  
Fannie Greenbaum  
Harold Margolin  
Anna L. Mindell  
Rose Osman  
Nathan Nat Robin  
Sammy Solomon  
Anna Sutin  
Sonie Tonkey

### 1 Iyar - April 20

Frances Agron  
Sophie Balter  
Harry B. Cohn  
Jennie Gershman  
Samuel Goller  
Elka Gorodezky  
Hannah Laner  
Ruth Wolf Levi  
Rebecca Sanell  
Phillip Sloan  
Sarah Spindler  
Ike Tuzman  
Gus J. Unell  
Sophia Wayne

### 2 Iyar - April 21

Betty Brand  
Elaine E. Feingold  
Morris Oliver  
Lois Rosenbloom  
Sylvia Swerdloff

### 3 Iyar - April 22

Isaac Bratt  
Zalman Glatt  
Edythe Goldberg  
Goldie Goodman  
Nina Kahn  
Beverly Mann  
Bertha Milgram  
Wolf Singmon  
Bessie Spivak  
Miriam Studna

### 4 Iyar - April 23

Leah Bronstein  
Louis Dworkowitz  
Sophia Rachel Eisberg  
Rosalie Loeb  
Anna Quito  
Samuel Rubinfire

### 5 Iyar - April 24

Sophie Berkowitz  
Pearle Bramson  
Issy Crosner  
Shalom Finkelstein  
Benjamin Goodman  
Bernard Hurwitz  
Esther Jacobson  
Frank Josephson  
Sam Klein  
David Krashin  
Anne C. Reichman  
David Aaron Schwartz  
Meyer Selichonok  
Gwendolyn Snitz  
Howard Wayne

### 6 Iyar - April 25

Minnie Berg  
Anna Tzirel Cohen  
Joseph A. Cohen  
Mike Fox  
Louis Gershman  
Joseph Gershon  
Leah Partnoy  
Martin Ross  
Morris Rubinfire  
Libby Shankman  
Hyman Strum  
Louis Yukon

### 7 Iyar - April 26

Morris Benjamin  
Martha Fishman

Bernard Ginsberg  
Dollie Levi  
Himie Levitch  
Harris Sheskin  
Marie M. Singer

### 8 Iyar - April 27

Morris E. Baellow  
Henry Baum  
Merle Galitzky  
Alkano Katz  
Paul Peltzman  
Phil Silverman

### 9 Iyar - April 28

Leah Rose Byarsky  
Margaret K. Davis  
Meyer Eckstein  
Arnold Feinberg  
Margaret Fisher  
Ruby Geller  
JoAnne Hollub  
Joseph Krantz  
Sarah T. Rogell  
Esther Rosenberg  
William Ruback  
Morris B. Shankman  
Alex Stolov

### 10 Iyar - April 29

Esther Brockman  
Margaret Devins  
Fanny Fredman  
Harold Glazer  
Abe M. Herzmark  
Jack Kur  
Abraham Louis Noah  
Rebecca Rolsky  
Philip Sandler  
Chanah B. Schoop  
Florence Shirley  
Schuman

### 11 Iyar - April 30

Reuben Brenner  
Issy Herman Eisman  
Shifra Ruth Gaba  
Ben Gorman  
Anna Kohn  
Harry Kopec  
Rachel Leah Saver  
Harry Shultz  
Morris Yaskolkka





## Ann & Isadore Gale Scholarship Fund

*In Memory of*  
**Maria Sorkin**  
Roman & Svetlana Sorkin

## Benjamin Ryweck Torah Fund

*In Honor of*  
**Rabbi David Glickman's BD**  
**Harold Kaseff's 75th BD**  
Joan March  
*In Memory of*  
**Tzivia Gaba**  
**Walter March**  
**Judith Mark**  
Joan March  
**Sol Lipsky**  
**Isadore Weintraub**  
Shirley Gottstein

## Beth Shalom Chesed Committee Fund

*In Memory of*  
**Bert Zeldin**  
Marvin & Adelle Goldstein

## Beth Shalom General Fund

*In Honor of*  
**Mike Abrams**  
Naomi Kaufman  
**Mike Azorsky's 75th BD**  
Cindy & Ira Levy  
Steven & Susan Osman  
**Bernard Birnbaum's BD**  
Harris & Beverly Lee  
**Jonathan Chilton's 60th BD**  
Arthur & Diane Federman  
**Dini Freed Receiving Leadership Development Award**  
Neil & Leslie Shutzberg

## Harold Kaseff's 75th BD

Ron & Norma Shapiro  
**Scott & Stacy Winkler**  
Elliott & Kathy Hollub  
*In Memory of*  
**Marilyn Bressel**  
Jerold Bressel  
**Phyllis Brown**  
Lewis & Susan Nerman  
**Judy Chaikin**  
**Anna Chaikin**  
Gini Chaikin  
**Ray Davidson**  
Neil & Blanche Sosland  
**Beatrice Gershon**  
Paul Gershon  
**Anna Glazer**  
Mel Glazer  
**Fannie Gordon**  
Allen & Ann Gordon  
**Clara Kahn**  
Lee Ann Saltzman  
**Baruch Khefets**  
Oleg & Emiliya Khefets  
**Bess Kopin**  
Clarence & Alice Winer  
**Marga Kretschmer**  
Marian Kaplan  
**William Leff**  
Joe Leff  
**Cary Lieberman**  
Hanan & Natalie Hammer  
**Adolph & Helen Loeffler**  
Andrea Goldberg  
**Charles Malcy**  
Art Malcy  
**Maxine Margolin**  
Donna Limbaugh  
**Ethel Pfefer**  
B L Pfefer  
**Etta Price**  
Michael Matters  
**Pauline Remis**  
Louis & Mason Kessler  
**Joseph Shure**  
Walter & Helaine Reed  
**Jo Ann Smith**  
Robert Smith

## Benjamin Sosland

Henry & Judy Sosland  
**Dr. William Sosnow**  
Steven & Elise Cohen  
Michael Sosnow  
**Martha Stern**  
Stanley Stern  
**Arnold Weintrub**  
Steve & Ellen Katz  
**Bertha Zolotor**  
Andrea Poisner

## Beverly & Harvey Bodker Endowment Fund

*In Honor of*  
**Harvey Bodker, Chatan Torah**  
Tibor & Carla Klausner  
**John Goldberg & Marla Brockman's 25th Ann.**  
Harvey Bodker  
*In Memory of*  
**Minnie Friedson**  
Betsy Bodker  
**Tzivia Gaba**  
Harvey Bodker

## Cemetery Maintenance Fund

*In Memory of*  
**Morris L. Hertzfield**  
Harriet Hertzfield  
**Harry Kaufman**  
Mitch & Lisa Hamburg & Family

## Eugene & Shirley Novorr Tots for Torah Fund

*In Memory of*  
**Tzvia Gaba**  
Shirley Novorr

## Florence & Meyer Kaplan Sukkot Festival Fund

*In Memory of*  
**Sidney Carr**  
**Steven J. Hammer**  
Bob & Arlene Kagan

## Gale & Maxine Grossman Religious School Fund

*In Memory of*  
**Paul Mann**  
Morton Mann

## Hanan Wedlan Family Fund

*In Memory of*  
**Elizabth Wedlan**  
Mitch & Lisa Hamburg & Family

## Harry & Anita Daniels Camp Ramah Scholarship Fund

*In Memory of*  
**Morris Goldstein**  
**Adele Goodman**  
Anita Daniels

## Hazzan Ben-Yehuda's Discretionary Fund

*In Memory of*  
**Darlene Meltzer**  
Ed Meltzer

## Jacob H & Rose Levine Teacher Development Fund

*In Memory of*  
**Sophie Levine**  
Art & Linda Levine  
**Cary Lieberman**  
Peter & Bev Newman  
**Henry Steinhaus**  
Art & Linda Levine

## Joel Polsky USY Fund

*In Honor of*  
**Mike Azorsky's 75th BD**  
Jeff & Arlene Misler  
*In Memory of*  
**Cary Lieberman**  
Larry & Ellen Polsky  
Elaine Polsky

## Kiddush Fund

*In Honor of*  
**Harold Kaseff**  
**Reading Haftorah**  
Arlene Shalinsky  
*In Memory of*  
**Tzivia Gaba**  
**Gertrude Kaseff**  
Harold Kaseff & Rhea Salasche  
**Rachel Posner**  
Marvin & Carol Goldstein

## Louis & Anna Grossman Nursery School

*In Memory of*  
**Anna Lee Grossman**  
Norman & Charlene Meltzer

## Marcia Eveloff Lechem Fund

*In Memory of*  
**Morrie Bressel**  
Judy Krug  
**Arthur Chapman**  
Steve & Nancy Kargman  
**Harry Dolginoff**  
Marna R. Dolginoff  
**Tzivia Gaba**  
Harold & Linda Schlozman  
**Francis Greenberg**  
**Jeff Lintz**  
Jeffrey & Wendy Sitzman  
**Arnold Shanberg**  
Patsy Shanberg  
**Harry Tabolsky**  
Hope & Marshall Talbot

## Marilyn Graubart Scholarship Fund

*In Memory of*  
**Michael Sorkin**  
Roman & Svetlana Sorkin

## Mendel & Sarah Small Fund

*In Memory of*  
**Mendel Small**  
Marshall & Mary Small

## Rabbi Glickman's Discretionary Fund

*In Memory of*  
**Molly Berlin**  
Anne Bratt  
Kenneth & Karen Glickman  
Tibor & Carla Klausner  
**Darlene Meltzer**  
Ed Meltzer  
**Brian Salvay**  
Mark & Diane Davidner

## Rose Evelyn Sporn Primary Fund

*In Memory of*  
**Jere Kaufman**  
Deborah Warden

## Rose Family Early Childhood Education Center

*In Memory of*  
**Cary Lieberman**  
Paul & Susie Blackman

## Rose S Levine & Doris L Flam Arts & Education Fund

*In Memory of*  
**Carl Nusbaum**  
Judith Bell

## Sanford Dunn Merit Scholarship Fund For Study

*In Memory of*  
**Dr. Floyd Dunn**  
**Tzivia Gaba**  
**Sara Lerner**  
Patsy Shanberg

## Sara & Israel Mittelman March Livng Education Fund

*In Memory of*  
**Solomon Blum**  
Nata Scharf

## Shifra & Joe Gaba Fund

*In Memory of*  
**Shifra Gaba**  
Bill & Lynn Intrater  
**Tzivia Gaba**  
Michael & Linda Begleiter  
Judith Bell  
Irvin Belzer & Sue McCord-Blezer  
Loren & Marilyn Berenbom  
Rabbi Alan & Linda Cohen  
Mark & Diane Davidner  
Jerald Enslein  
David Firestone  
Marvin & Carol Goldstein  
Hanan & Natalie Hammer  
Tibor & Carla Klausner  
Miriam Krantz  
Scott & Susan Krigel  
Art & Linda Levine  
Florence Pack  
Harold & Janet Price  
Andy & Zelda Reiz  
Joseph & Bella Schultz  
Reena Schultz  
Merna Siegler  
Sarah Small  
Neil & Blanche Sosland

## Stein Family Youth Fund

*In Memory of*  
**Tzivia Gaba**  
Stewart & Esther Stein  
**Dora Viscofsky**  
Elizabeth Bohm

## Sylvan Siegler Scholarship Fund for Jewish Camping

*In Memory of*  
**Ann Siegler**  
Merna Siegler



# Community

## Yom HaShoah, April 19



Yom HaShoah will be observed beginning at 1:30 pm Sunday, April 19, in the White Theatre at the Jewish Community Center. The program will feature the traditional candle lighting ceremony and a musical program commemorating 70 years since the end of World War II. Congregation Beth Shalom member, Ellen Kort, is chairperson for the event.

## Yom HaZikaron, April 22



Yom HaZikaron, Israeli Memorial Day, will be observed Wednesday, April 22, at 7:00 pm at the Jewish Community Campus. There will be a traditional Israeli ceremony honoring fallen soldiers and victims of terror.

## Yom Ha'atzmaut, April 23



Yom Ha'atzmaut, Israeli Independence Day, will be celebrated at Kehilath Israel Synagogue on Thursday, April 23, from 5:30-8:30 pm. A highlight of the evening will be a concert featuring Dganit Daddo at 7:00 pm. She is an Israeli singer and member of the Israeli National Theatre "Habima" who performs a nostalgic mix of traditional Jewish music along with Hebrew, Yiddish and Ladino folklore Songs. A falafel dinner for a fee and a dessert reception afterward will be offered. The event is free except for charges for the food.

## Passover Schedule

### Friday, April 3

6:45 am Shacharit, Siyyum Bekhorim & Breakfast in room 108-09  
6:00 pm Minchah/Ma'ariv/Kabbalat services in Library Reading Area  
7:26 pm Passover begins

### Saturday, April 4

9:30 am Shabbat/Passover morning services in Library Reading Area\*  
7:26 pm CBS Minchah/Ma'ariv/Havdalah in room 108-09  
7:30 pm Community 2nd Night Passover Program begins (by reservation only)

### Sunday, April 5

9:30 am Morning Services in GSH  
6:00 pm Minchah Service in GSH

**Morning services April 6-9--regular times at Village Shalom**

### Thursday, April 9

6:00 pm Minchah services in GSH

### Friday, April 10

9:30 am Morning Services in GSH with Yizkor  
6:00 pm Minchah/Ma'ariv/Kabbalat Shabbat Services

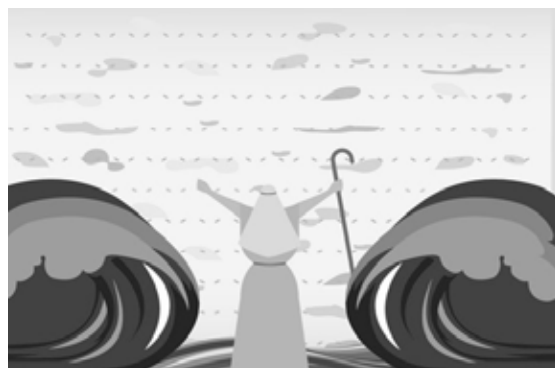
### Shabbat, April 11

9:30 am Morning Services in GSH only\*  
7:33 pm Minchah/Ma'ariv/Havdalah  
8:33 pm End of Passover  
9:00 pm CBS will re-purchase chametz

**Please Note:**

**GSH - Goldsmith Hall**

**\* - No Library Minyan**



## Summer Squash Soup

### Ingredients:

2 cup vegetable broth  
pinch cayenne pepper (optional)  
¼ cup coconut milk (plus extra for topping)  
1 tablespoon olive oil



2 cup summer squash  
½ cup yellow onion  
¼ cup carrot  
¼ cup white wine  
1 clove garlic  
1 cup potatoes, diced into cubes  
¼ teaspoon each: coriander, turmeric and paprika  
⅛ teaspoon cumin, mustard powder, and cinnamon

### Directions:

In a medium pot, heat olive oil over medium low heat. Add in garlic and onions, sautéing until onions begin to soften and garlic becomes fragrant. Add in squash, carrot, and potatoes - continuing to cook until squash and potatoes begin to soften, about five minutes. During this time, begin to add spices. Once vegetables begin to soften, add in white wine to deglaze the pan. Finally, pour in vegetable broth, bring to a boil, and reduce to a simmer. Let simmer until potatoes and squash are soft, 20-25 minutes. (taste a couple times during this to adjust spices to your liking)

Once potatoes are done, use an immersion blender or a regular blender to create a smooth texture in your soup. Return soup back to stove top, stir in coconut milk, and heat again until soup is hot. When ready to serve, place soup in a bowl, spoon 1 tablespoon of coconut milk onto top of soup, and sprinkle a little paprika on top of each.

Congregational-Wide Events - See each department for their activities

Sunday	Monday	Tuesday	Wednesday	Thursday	Friday	Saturday
			<b>1</b> Warm Up America! 12 Nisan	<b>2</b> Last Day of Hebrew High 13 Nisan	<b>3</b> Siyyum for First Born Following Services Offices Close at Noon 14 Nisan 7:26 Shabbat Shalom	<b>4</b> Passover Begins Day 1 Community Seder 15 Nisan 8:26 Havdalah Shavuah Tov!
<b>5</b> Passover Day 2 No PRS 16 Nisan	<b>6</b> Passover Day 3 17 Nisan	<b>7</b> Passover Day 4 Sisterhood Torah Fund Luncheon 18 Nisan	<b>8</b> Passover Day 5 No PRS Downtown Talmud Jam 19 Nisan	<b>9</b> Passover Day 6 Offices Close at Noon 20 Nisan 7:32 Shabbat Shalom	<b>10</b> Passover Day 7 Offices Closed 21 Nisan 7:33 Shabbat Shalom	<b>11</b> Passover Day 8 Birthday Shabbat Yizkor Service 22 Nisan 8:33 Havdalah Shavuah Tov!
<b>12</b> Cabaret Fundraiser 6:30 pm to 9:00 pm PRS Resumes 23 Nisan	<b>13</b> Board Meeting 24 Nisan	<b>14</b> 25 Nisan	<b>15</b> PRS 5-7th Yom HaShoah Program SH Book Club 26 Nisan	<b>16</b> Yom HaShoah Sarah Peltzman Adult Ed. Class 27 Nisan	<b>17</b> Rimon Service & Dinner 28 Nisan 7:39 Shabbat Shalom	<b>18</b> Anniversary Shabbat Shabbat Kids' Club & Tot Shabbat Parashat Hashavuah Class 29 Nisan 8:39 Havdalah Shavuah Tov!
<b>19</b> PRS Mock Wedding Community Yom HaShoah Holocaust Memorial Service 30 Nisan	<b>20</b> 1 Iyar	<b>21</b> 2 Iyar	<b>22</b> Yom Hazikaron Grades 5-10 Kehillah Yom HaZikaron Program PrayerWorks 3 Iyar	<b>23</b> Yom Ha'Atzmaut Sarah Peltzman Adult Ed. Class 4 Iyar	<b>24</b> Baccalaureate Dinner 5 Iyar 7:46 Shabbat Shalom	<b>25</b> 10th Grade Confirmation 6 Iyar 8:46 Havdalah Shavuah Tov!
<b>26</b> Second Grade Siyyum HaTorah 7 Iyar	<b>27</b> Eagle Court of Honor Boy Scout Troop 61 8 Iyar	<b>28</b> 9 Iyar	<b>29</b> 10 Iyar	<b>30</b> Sarah Peltzman Adult Ed. Class 11 Iyar		

## Candle Lighting Blessing

ברוך אתה ה' אלקינו מלך העולם אשר קדשנו במצותיו וצונו להדליק נר של שבת.

Barukh ata Adonai Eloheinu melekh ha'olam, asher kiddeshanu b'mitzvotav vetzivanu lehadlik ner shel Shabbat.

## April Service Schedule

## Shabbat CBS

### Weekdays

Minchah:

**Sunday-Thursday**  
6 pm

Shacharit:

**Monday-Friday**  
7 am

Kabbalat Shabbat: **Friday** 6:00 pm  
Main Service: **Saturday** 9:30 am  
Library Minyan: **Saturday** 9:30 am  
Minchah: **April 4** 7:26 pm  
Minchah: **April 11** 7:33 pm  
Minchah: **April 18** 7:39 pm  
Minchah: **April 25** 7:46 pm  
Shacharit: **Sunday** 8:00 am

Shabbat Services and Sunday morning Shacharit will be held at CBS, 14200 Lamar. Weekday Minyan will be held at Appleman Synagogue, Village Shalom, 5500 W. 123rd St.







## Congregation Beth Shalom

14200 Lamar • Overland Park, KS 66223

[www.bethshalomkc.org](http://www.bethshalomkc.org)

Office: 913-647-7279 • Fax: 913-647-7277

### CONGREGATION Beth Shalom

David M. Glickman, Senior Rabbi

Hazzan Tahl Ben-Yehuda,

Director of Congregational Learning

Elaine Levine, Executive Director

Alan L. Cohen, Rabbi Emeritus

Judy Jacks Berman, Director, RFEC

Norman Kahn, Jr. MD President

Bev Newman, Scroll Editor

Dahlia Berger, Scroll Design

The Congregation Beth Shalom Scroll (USPS531-420) is published monthly by Congregation Beth Shalom, 14200 Lamar Ave., Overland Park, KS 66223. Annual Subscription \$24.00. Periodical Postage Paid in Kansas City, MO. **DATED MATERIAL**

**POSTMASTER:** Send address changes to CONGREGATION BETH SHALOM SCROLL, 14200 Lamar, Overland Park, KS 66223. Scroll Deadline: The 1st of the previous month. Submit articles to the Administrative office before the deadline.

*Congregation Beth Shalom, an egalitarian Conservative synagogue, is a welcoming community of individuals from diverse backgrounds, strengthening connections with God, Torah and the Jewish people through communal commitment to prayer, study and acts of loving kindness.*

#### Looking Ahead:

Scroll Deadline:  
April 6 for May

Friday Night Lights  
May 1

Third Grade Hag HaSiddur  
May 3

Steppin' Out  
May 3

Last Day of PRS Classes  
May 6

Kindergarten Consecration  
May 16

SH Officer & Board Installation  
May 19

Offices Closed for Memorial Day  
May 25

#### Office Hours:

**Monday - Thursday** 8:30 am-5 pm  
**Friday** 8:30 am-3 pm  
*Closed on Federal Holidays*

#### Mt. Carmel Cemetery Hours:

**Monday, Wednesday** 8 am-4 pm  
**Tuesday, Thursday** Closed  
**Saturday** Closed  
**Friday & Sunday** 8 am-4 pm  
**National Holidays** 9 am-4 pm  
*Exceptions: Thanksgiving, New Year's Day & Christmas Day*  
**Jewish Holidays** Closed  
**Phone: 816-361-4495**

#### Sisterhood Gift Shop Hours:

**Sunday:** 9:30 am - Noon (PRS Days)  
**Monday, Tuesday, Thursday:** 10 am - 2 pm  
**Wednesday:** 10 am - 2 pm, 4:30 - 6 pm (PRS Days)  
**Friday:** 10 am - noon  
**913-647-7298**

### Baccalaureate Dinner April 24

We will honor our graduating high school seniors at a Shabbat Baccalaureate dinner on Friday, April 24. Shabbat services begin at 6:00 pm in Goldsmith Hall, followed by a dinner that is open to the congregation. The evening is supported by the Harvey Bodker Family fund in memory of Beverly Bodker, z"l. A special gift from the family will be presented to the graduates during the evening. Parent co-chairs are Rhea Nadler, Carol Porter and Sheila Sonnenschein. The following graduating seniors will be honored:

Moriah Abrams..... daughter of Mike & Renana Abrams  
Clay Cabbage..... son of Patrick & Jannie Cabbage  
Jacob Flekier ..... son of Steve & Milisa Flekier  
Joshua Hurst ..... son of Rick & Lisa Hurst  
Elijah Kahn ..... son of Mike & Staci Kahn  
Anna Kaseff..... daughter of Barry Kaseff & Jessica Rudnick-Kaseff  
Morgan Krakow ..... daughter of Jason & Andrea Krakow  
Samuel Kramer..... son of Jeff & Polly Kramer  
Sydney Nadler..... daughter of Matthew & Rhea Nadler  
Emily Newman ..... daughter of Neil & Cathy Newman  
Linzi Oppenheimer ..... daughter of Scott & Carla Oppenheimer  
Sophia Porter..... daughter of David & Carol Porter  
Michael Rubel ..... son of Matt & Melissa Rubel  
Emily Ruben ..... daughter of David & Gerri Ruben  
Sophie Shapiro ..... daughter of Peter & Amy Shapiro  
Gabriella Sonnenschein... daughter of Ken & Sheila Sonnenschein  
Yale Winston..... son of Bruce & Susan Winston