



CONGREGATION
BethShalom

The Scroll

Community-wide: Tisha B'Av Observances & Service

Tisha B'Av (The 9th day of the Hebrew month of Av) is a day of national mourning. The holiday primarily commemorates the destruction of the 1st and 2nd Temples, but also other tragedies of the Jewish people.

Tisha B'Av

Destruction & Renewal

Saturday, August 10 | 9:45 PM

CONGREGATION BETH SHALOM

A meaningful service with beautiful, mournful melodies, some engaging teaching, and a time for communal reflection on both painful times of our past and hope for our future.

- Ma'ariv Service
- D'var Torah
- Hebrew & English Readings of Eichah (Book of Lamentations)
- Songs and Prayers

Sunday, August 11 | 8:00 AM

CONGREGATION BETH SHALOM

Tisha B'Av/Shacharit Services
with the Hebrew reading of Eichah

Sunday, August 11 | 5:00 PM

KEHILATH ISRAEL SYNAGOGUE 10501 Conser

- Movie: "A Long Way Home"*
- Panel Discussion with Rabbis Moshe Grussgott, Mark Levin, Beryl Padorr, moderated by Rabbi Jonathan Rudnick
- Mincha service at 8:00 PM led by Rabbi Moshe Grussgott and ending with a Ma'ariv service
- Light Break Fast served at 8:51 PM

To RSVP for these observances, register online at kcrabbis.org or contact Annette Fish, Rabbinical Association Administrator/Program Director, afprogram@aol.com, 913-327-4622.

* "A Long Way Home" examines post-World War II Europe and the struggle of tens of thousands of displaced Jewish refugees in the aftermath of the Holocaust. The film includes interviews with Holocaust survivors, newsreel footage, and readings of letters, journals, and news reports, to tell the story of the hardships faced by those liberated from concentration camps in 1945. Morgan Freeman, Martin Landau, Edward Asner (KC native), Helen Slater, David Paymer, and Michael York contributed readings to the soundtrack.

Sponsored by the Rabbinical Association of Greater Kansas City and area Congregations



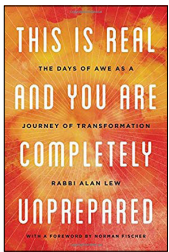


Let's Begin Training Now...

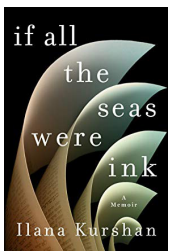
It doesn't matter when Rosh HaShanah comes – it is always either “late” or “early.” This is because we calibrate our internal calendar around Labor Day and the school year starting rather than the first of Tishrei.

The High Holidays are like a giant marathon, that we often try to run without training. We may cross the finish line, but we do so exhausted, sore, potentially injured, and without a feeling of accomplishment. In September, we will have an “Elul Institute,” with teachers coming in to help us prepare our minds and our hearts for this sacred time. Now is a time, also, to think about the spiritual goals that we wish to accomplish in the following year.

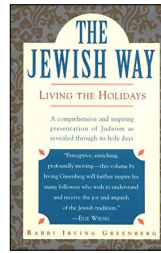
I have a few reading suggestions to help get ready for the High Holidays. Some are holiday related – others are just good for the soul. On the digital version of *The Scroll*, I have linked the titles to their Amazon pages.



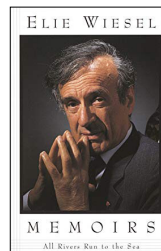
This is Real and You are Completely Unprepared: The Days of Awe as a Journey of Transformation by Rabbi Alan Lew. Rabbi Lew, who passed away suddenly ten years ago, came to Jewish rabbinical leadership via a spiritual journey through Buddhism. This is a totally readable book with profound insights into the transformations that take place in the sacred time of the High Holidays.



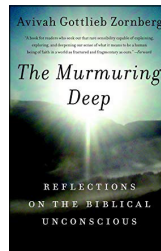
If All the Seas were Ink by Ilana Kurshan. This is a memoir of a young, intellectual woman in Jerusalem as she navigates life out of one marriage and into another. Her calendar through life's emotional journey is the schedule for the Talmud's Daf Yomi cycle (daily page of Talmud study). Completing Daf Yomi is a huge mountain of personal learning, and this book weaves the emotional weight of both serious Jewish learning and real life.



The Jewish Way by Rabbi Irving Greenberg. Many in Kansas City have met or learned with Rabbi Irving “Yitz” Greenberg, the founder of Clal. His book on the Jewish holidays is, in my opinion, the best adult primer on the Jewish holidays. It gives you a philosophical and historical background to the whole calendar. The best parts are his writings on the modern holidays of Yom HaShoah and Yom HaAtzmaut (Holocaust Remembrance Day and Israel's Independence Day).



All Rivers Run to the Sea: Memoirs by Elie Wiesel. This book was given to me 25 years ago, and I keep going back to it. Every essay in this memoir is a gem. It is the testimony to how a life of learning and survival can influence the entire world.



The Murmuring Deep: Reflections on the Biblical Unconscious by Aviva Gottlieb Zornberg. Zornberg is a master weaver of commentary on the Biblical narrative. This book, in particular, draws on a lot of the scriptural narratives that we read on Rosh HaShanah and Yom Kippur. This isn't just a book to read before the holidays, it is one to bring to read during services!

Whether you pick up one of these or another book for spiritual preparation – drop me a line at dglickman@bethshalomkc.org to let me know how it is! Wishing you all a fulfilling end of summer and strong preparation for the upcoming new year.

David M. Glickman

RABBI DAVID M. GLICKMAN
dglickman@bethshalomkc.org

*Please watch your mail towards the end of the month
for your High Holiday packet.*

If you need to make financial arrangements prior to that, please contact Bernie Fried, Executive Director, at 913-647-7293 or bfried@bethshalomkc.org.





Life Lesson 23: *“Wise men speak because they have something to say; fools because they have to say something.” – Plato*

I am a dinosaur by today’s communication standards. I actually enjoy talking to people. I actually enjoy listening to people. I like to look people in the eye so they know exactly what I mean and I know exactly what they mean, something that is not always the case with written or electronic communication.

The art of speaking is a lost art. Texting, emailing, messaging, and a host of other means of electronic communication have overtaken the spoken word. Often, people don’t know what to say because they are far more comfortable using their smart phone, tablet, or computer to opine on a host of subjects.

I have observed people texting while sitting across from each other. I have seen people texting someone in the next cube rather than walking next-door to speak with them. With a smart phone, you can spend hours “talking” to someone without ever hearing their voice. After all, who needs a larynx when we have thumbs?

The human voice is the most passionate, powerful, useful tool the world has ever known. What we say and the way we say it can be far more important than the message we are trying to convey. Words can lift people up or tear them down, motivate a crowd to support a worthy cause or cause inconceivable harm to property or people. Only with the spoken word can we clearly understand the intention of the speaker. With electronic communication, we can only guess.

Best-selling author Yehuda Berg said, *“Words are singularly the most powerful force available to humanity. We can choose to use this force constructively with words of encouragement, or destructively using words of despair. Words have energy and power with the ability to help, to heal, to hinder, to hurt, to harm, to humiliate and to humble.”*

We all should work together to resurrect the lost art of speaking. We all should choose our words carefully. We all should think before we speak. We all should understand the power of the spoken word. Let’s all be wise men and women and choose those words carefully. Let’s all try to give our thumbs a rest.

BERNIE FRIED
EXECUTIVE DIRECTOR
bfried@bethshalomkc.org

Seize the Day *Day of Discovery* Sunday, August 25 | 8:45 AM – 3:15 PM

by VICTOR WISHNA | EDUCATION VICE PRESIDENT

“Find a place where there is learning.”

– Pirkei Avot

As the August heat bears down, it seems like summer is only hitting its stride. Well, around here, that can only mean one thing: another school year is set to begin.

The Rose Family Early Childhood Education Center and Polsky Religious School are both gearing up for a year of innovation and growth, and the calendar is full of exciting new programs for Beth Shalom students and families. Yet as the kiddos head back to class, I want to encourage learners of *any* age to take one day for themselves—specifically, a Day of Discovery, which will take place Sunday, August 25, from 8:45 a.m. to 3:15 p.m., at the Jewish Community Campus.

Our community is a place where there is learning, as is made clear by the dozens of Jewish educators, including our own Rabbi Glickman, who come together to teach more than 30 classes on a wide range of topics throughout the day. (Nu, there’s also breakfast. And lunch. And dessert.) There will again be a special morning program for K-6 students and parents, and every Beth Shalom PRS and HBHA family will want to join in the community-wide *ruach* that is created. More information is available at kcrabbis.org.

My own kids—who have gotten used to sleeping in these last days before school—may tell you it can sometimes be too early to learn. But as you’ll discover at Day of Discovery, it’s never too late.



“What’s up with the Imahot?” (part two of three)

by HAZZAN TAHL BEN-YEHUDA
hazzantby@bethshalomkc.org

I grew up in a home where the importance of Jewish women throughout history was not questioned ever, in large part because of the relationship between my parents. My parents had a sort of old-fashioned marriage, where my mom stayed home raising the four children, and my father, a Rabbi of a small congregation in Western Pennsylvania, left the house every day to go to work, often staying quite late for meetings. Dinner was on the table every single night at 6:00 pm. My mom did all the laundry, cooking, cleaning, shopping, and bathed us kids, probably more often than we would have liked...

Abba (my dad), would not let us get up from the table after dinner before we would thank our mom for the wonderful food we had eaten. He let us know in no uncertain terms that he was able to do everything he did ONLY because of everything our mother did. He showered her with thanks for the food she cooked, the home she kept, the children she was raising, and the way that everything she did elevated him, in fact, in the eyes of our congregants. It was always clear to me and my siblings that Abba worked away from home and mom worked in the home, and our parents relied on each other for what each of them brought to the table, so to speak.

Abba always counted women in the minyan, and he trained b'not mitzvah to do exactly the same parts of the service as b'nai mitzvah. Not until I was at college did I come across anyone suggesting that the imahot, Sarah, Rebecca, Rachel and Leah, should be added to a prayer every time we mention Abraham, Isaac and Jacob. The first time I heard it, I bristled for the simple reason that I love tradition. I feel connected to our prayers because they belonged to my parents, my grandparents and generations of Jews before them. I love being a link in that chain, and changing the words of a prayer felt incredibly uncomfortable to me.

But even more, I bristled at the idea that anyone might think that Abraham, Isaac and Jacob could POSSIBLY have accomplished what they did accomplish without their wives and the work each of them did for and with their husbands. Mentioning Abraham meant Abraham and Sarah. Mentioning Isaac meant Isaac and Rebecca, and mentioning Jacob meant Jacob, Rachel and Leah.

Next month I'll share the next layer of my thoughts on the imahot – if you want to talk with me about it before then, I'll take you for a cup of coffee or tea – my treat!

WANTED! Adult Volunteer(s) for PRS Office during School Hours

The Polsky Religious School is seeking a volunteer for Sunday mornings from 9:00 till 12:15, and a volunteer for Wednesday afternoons from 4:00 till 6:15. This could be one person or two. Responsibilities include light administrative tasks, assisting with in-school communication, and assisting Hazzan Ben-Yehuda with any (usually minor) emergencies or unforeseen situations that may come up. This position does not pay in dollars and cents, but the relationships you can build with teachers, parents and children is enriching beyond monetary value!

Please email Hazzan Ben-Yehuda at hazzantby@bethshalomkc.org to discuss this opportunity. Thank you so much!

There are few things in life better than Jewish Summer Camps!

by STEPHANIE WILLIAMS

Some of my fondest memories are of my time as an overnight camper! This summer, Rabbi Glickman and I both got to spend some time at a couple of camps and loved visiting with our youth in their happy place! Camp is magical. Getting to see our congregants as campers and as staff, fills us with pride! Earlier this summer, Becca and I sent out a request to parents, asking them to let us know which camps their children were attending so we could send them Bunk Notes. Thanks to your responses, we sent letters to 8 different summer camps and over 20 campers got mail from Congregation Beth Shalom! We hope to visit with your campers next summer, but if we can't make it in person, we would at least like to send them a Bunk Note! If you would like more information about Jewish Summer Camps and the amazing impact they have on our youth, just give us a call!



by JUDY JACKS BERMAN | DIRECTOR
jjb@bethshalomkc.org | 913-647-7287

August is a time for new beginnings!

Summer comes to an end and school begins in the middle of August.

- Time to get ready to give up the lazy days of summer and get back into a school routine or if your little one is just starting school for the first time, creating new routines.
- Kids love predictability and knowing what is next.
- Kids love routines!
- If you do not already have the routine of Shabbat dinners on Friday night, why not start Friday night family night!
- The dinners do not have to be roasted chicken and matzah ball soup, although I do love both.
- Start simple!
- Pick up a challah and wine and grape juice and candles for the blessings. Flowers will make your table feel extra special!
- Let each family member create their favorite meal for Shabbat dinner each week.
- Maybe someone else in the family gets to choose a special Shabbat guest! And another can choose and help make a special dessert.
- The most important thing to me about Shabbat dinner is creating Friday nights as a sacred family time.
- To reconnect, end the week enjoying each other!

Ahad Ha'am famously said: "More than Jews have kept Shabbat, Shabbat has kept the Jews."

RFECEC Summer Camp



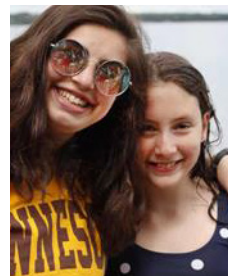
A Few Openings for Fall

There are still a few openings for the Fall at Beth Shalom RFECEC. We have children learning and playing and loving school from 18 months to 5 years!

Call Judy Jacks Berman, Early Childhood Director at 913-647-7287 today for a tour and more information, if you have not yet enrolled your child or grandchild.

Our wonderful referral program entitles you to a \$100 thank you gift, if you recommend our preschool to a new family and they enroll their child identifying you as the referring friend.

Fun was shared at the Jewish Summer Camps!



Beth Shalom Sisterhood Prospective Membership Event

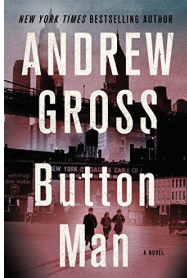


Like to shop? Like fun clothes?

Beth Shalom Sisterhood has the answers! We will be holding a prospective membership and shopping event on Wednesday, August 14 from 6:00 - 8:30 pm at Evereve, Town Center Crossing, 4319 West 119th Street, Leawood, Kansas.

Evereve is a fashion and styling company designed for the lifestyle of active women who want a contemporary and versatile look to their clothes. Snacks and wine will be provided along with information about our Sisterhood and its dynamic new administration. A complimentary 15% discount will be offered on all purchases. Start a wish list now at evereve.com. Join us and bring your friends for a fun girls night out.

RSVP to Berenice Haberman at 913-894-6657 or bshaberman521@gmail.com by August 7.



Sisterhood Book Club August 14, 2019 | 7:00 PM

Sisterhood Book Club will meet on Wednesday, August 14 at 7:00 pm, at the home of Nata Scharf. The Club will discuss *Button Man* by Andrew Gross.

The book club will select the other three books for the fiscal year.

For more details about Sisterhood Book Club or to attend, contact Linda Lessner at 913-897-0122 or llessner@kc.rr.com.

Sisterhood Gift Shop Hours

July 29, 31
August 2, 5, 7, 8 10:00 AM - NOON

Beginning August 12 – August 30:

MONDAY-THURSDAY 10:00 AM - 2:30 PM
FRIDAY 10:00 AM - 12:30 PM

We are preparing for the holidays coming up.

Please come in and view our newest items for hostess gifts, additions for your holiday collection, etc. We support Sisterhood and some funds are provided to our preschool. So keep us in mind for special events.



Of Blessed Memory

We express condolences to our Beth Shalom Members, their Families and Friends.

Dr. Byron Hardin, z"l JULY 1 – 28 SIVAN

*Praised is the True Judge*PLAQUES HAVE BEEN DEDICATED *In Memory Of...**Yahrtzeits* Join us for morning or evening minyan to say Kaddish for your loved one. See service schedule, page 11.**AUG 1 - 29 TAMMUZ**Isidore Bernstein
Louis Y. Chernikoff
Morris A. Friedman
Milton M. Gordon
Earl Jacobson
Pearl Mann
William Marcuwitz
Herman Millman
Bessie Rothberg
Max Rubin
David Smolinsky
Rosa Solomon
Cyrus Spungen
Herbert J. Winer
Lillian Yeddis
Gerald Yukon**AUGUST 2 - 1 AV**Dorothy R. Botwin
Jacob J. Greenstein
Gittel Hadas
Betty B. Heymann
Birdie Josephson
Retha D. Lisman
Gertrude Pasmanik
Jacob Selichonok
Minnie Werby**AUGUST 3 - 2 AV**Morris Boolkin
Simon Choikhit
Helen Cohn
Luba Dean
Leon Gelpman
Dorothy Dunn Globber
Dora Hellman
Jane Anne Klaiber
Edward C. Lefkoviits
Sarah Moskowitz
Benjamin Schoen
Harold Waxman**AUGUST 4 - 3 AV**Saul Brams
Sidney B. Devins
Sammy Devins
Rebecca Eisen
Isadore H.
Fleschman
Aileen Forman
Minnie L. Garfinkle
Harry Ginsberg
Rose Keen
Isie Krockover
Abraham Rogers
Meyer Rosenberg
Bernard Seiden**AUGUST 5 - 4 AV**Sadie Bell
Ann Goller Elick
Phillip Feingold
Bernard Greenberg
Fannie Lerner
Edith Mendy
Bronia Roslawowski
Harry Turock**AUGUST 6 - 5 AV**Rahel Bloomgarten
Don Herbert
Finestone
Sadie Gumowitz
Rachel Turk Hurwitz
David Kanter
Freda Lipsitz
Carl Minkin
Jacob Poizner
Phillip Samuelson
Charles Schoen**AUGUST 7 - 6 AV**Bessie Abramson
Morris L. Bigus
Anna Cohen
Samuel E. Dunn
Rose Gastman
Samuel A. Katz
Leo J. Levinson
Bela Lipszyc
Anna Naron
Sam Rosga
Morris Schoen
Alvin Shapiro
Abraham Vinick
Sarah R. Weinstein
Sarah Wolfberg**AUGUST 8 - 7 AV**Barry L. Aronson
Joseph E. Chambers
Gussie Kaufman
Samuel Kaufman
Lynn Kisluk
Betty Ann Korachik
Reltz Lenet
Morris J. Levin
Anna Dora Peltzman
Sam Samberg
Jacob Siegelbaum
Dora Walker**AUGUST 9 - 8 AV**Fannie Eisen
Barney Gershon
Naomi GoldsteinNathan Keen
Morris Rapschutz
Abraham Robinson
Sarah Rocher
Fannie Shapiro**AUGUST 10 - 9 AV**Alvin Arenson
Allan Birman
Betty Birman
Bessie Bordman
Mary Chernikoff
Mordecai Crosner
Rosa Crosner
Barbara Enslein
Rebecca R. Furman
Bessie Goldberg
Jennie Himmel
Anna Hoffman
Henshen Keller
David Leibtag
Emma Loeffler
Siegfried Loeffler
William Peltzman
Mitchel Rose
Anna Tempofsky
Pauline Yaskolka**AUGUST 11 - 10 AV**Melvin Ellis Beyer
Sarah Golding
Neil F. Miller
Jennie Millman
Mendel Oshry
Clara Rothblatt
Esther Shapiro**AUGUST 12 - 11 AV**Alfred Aron
Morris Balot
Ida Baron
Barney Cinnamon
Abraham Cohen
Sophia Cohn
Rae Dloogoff
Jacob Goldstein
Ida Z. Joseph
Richard L.
Josephson
Louis Kiansky
Esther Lesser
Charlotte S.
Margolin
Meyer Peltzman
Sarah Scrinopskie
Ethel Seider
Philip Wang**AUGUST 13 - 12 AV**Toby Chemel
Ida Frank
Dorothy Glass
Dora Gold
Nathan S. Goldberg
Serena Hammer
Anna Horowitz
Samuel Isack
Phillip Katz
Hyman J. Levi
Hyman Rosen
Ben Solomon**AUGUST 14 - 13 AV**Rebecca Barash
Bessie Brenner
Samuel J. Brown
Sigmund Dollman
Rose Gould
Jack Kahn
Harry Levy
Jennie Marks
Isaac Sackin
Harris Segelbohm
Samuel Spector
Ruth Unger
Evelyn Yodler**AUGUST 15 - 14 AV**Norma Bush
Abraham Dorfman
Rebecca Greenstein
Abe J. Kaplan
Minnie Rafiel
Kreine Shankman
Henry Sosland**AUGUST 16 - 15 AV**Robert Ruby
Bernstein
Sarah A. Freshman
Samuel L. Greenberg
Rose Hyman
Benjamin Katz
Frieda Shanberg
David Steinberg
Sadie Tonopolisky**AUGUST 17 - 16 AV**Annette Glaser
Sigmund Gundle
Freida Mendell
Abraham Sidley
Benjamin Silverman
Roni Smith
Louis J. Weintraub**AUGUST 18 - 17 AV**Rebecca Berman
Ethel H. Cohn
Abe Eisen
Louis H. Forman
Jacob Jagoda
Bess Merser
Lena Morris
Rubin Moskovitz
Joel Polsky
Lewis L. Sofnas
Sarah Wang**AUGUST 19 - 18 AV**Daniel Aranoff
Pola Baum
Marie Bell
Aaron Bloustine
Hyman Brand
Sylvia Bromberg
Benjamin Gastman
Kathleen C.
Peltzman
Lillie Lefkoviits
Gladys L. Normand
Sidney Osur
Jacob J. Taxman
Sarah Waxenberg
Alex A. Wedlansky
Aaron Ziman**AUGUST 20 - 19 AV**Samuel Baum
Joshua Cinnamon
Maurice M.
Dubinsky
Ruth Milgram
Eisberg
Meyer Gordon
Anna Halle
Jack Kay
Rachel Levinson
Ruthye Nowick
Sarah I. Rose**AUGUST 21 - 20 AV**Bernadine Benjamin
Donna Jean Cohen
Frank M. Coleman
Esther P. Dubinsky
Esther Duni
Bess Ginsberg
Essie Goodman
Max Hecht
Joseph Klein
Sam Lustig
Simon Navran
Sam PasmanikSarah M. Schere
Abe Schuman
Goldy Siegel**AUGUST 22 - 21 AV**Pesyl Brand
I.J. Cohen
Mollie Dashiell
Jack Denowitz
Anna Bluma Godock
Edith Goldstein
Reuben Kantor
Jacob Levinson
Sarah Siegel**AUGUST 23 - 22 AV**Charles Bass
Louis Donovitz
Robert H. Fichman
Maurice Loeffler
Jacob Max
Esther Millstein
Clara
Ommerman-Gilgus
Harriet Schoket
Samuel Sukon
Rosa Witschner**AUGUST 24 - 23 AV**Richard Biederman
Sherman Cohen
Ed S. Michelson
Alana Morris
Louis Pinsky
Harry Robinson
Sam Rosen
Morris Mike Ruback
Jacob Rubin
Joseph Schlosberg
Hortense Stern**AUGUST 25 - 24 AV**Frances Franks
Libbie Goldberg
Reuben Josephson
Max Lerer
Rena Agron
Rosenberg
Philip Rosenblatt
Abraham L. Snyder
Hymie J. Sosland
John Spitaufsky
Gedaliah Vigder**AUGUST 26 - 25 AV**Yoheved Flekier
Max Gluck
Emilie Isack
Philip L. LeviEmanuel Reichman
Frances Sandler
Samuel S. Shapiro
Marilyn Wasserman
Allen S. Yukon**AUGUST 27 - 26 AV**Edith Bell
Nathan Peltzman
Abe Sander**AUGUST 28 - 27 AV**Samuel Cohen
Ida Cohen
Nathan Dreiseszun
Abraham S.
Goodman
Louis H. Karosen
Joe Lipsky
Beatrice Belle Wilk
Anna Winett**AUGUST 29 - 28 AV**Etta Bayzman
Philip J. Cohen
Fannie Friedman
Rebecca Glassman
Moishe Isaac Kamar
Paulina Muller
Fanny Shlemovitz**AUGUST 30 - 29 AV**George Deiboch
Harry Dubinsky
Ben Goldstein
Israel C. Kamber
Ada Karosen
Rebecca Lieberman
Abe Markus
Abe Radetsky
Pro Sherman
Charles S. Smith
Mollie Spector
Samuel Summers**AUGUST 31 - 30 AV**Reline Eisemann
Anna Greenberg
Sam Horwitz
Theodore Kort
Jake Lazarus
Philip Lieberman
Joe Posner
Stanley D. Rostov
William Schoen
Sol Segal
Celia Spicer
Harry Teiblum

Contributions through July 12 are listed below. Thank you for thinking of us.

ADA HOFFMAN CAMP RAMAH SCHOLARSHIP FUND

In Memory of
David Kanofsky
Dale Singer

BENJAMIN RYWECK TORAH FUND

In Memory of
Judy Krug
Joan March

BETH SHALOM CHESED COMMITTEE FUND

In Memory of
David Kanofsky
Henri Goettel

In Memory of
Judy Krug
Robert & Evie Grant
Scott & Carla
Oppenheimer

BETH SHALOM GENERAL FUND

In Memory of
Gitta Azorsky
Robert & Jean Zeldin
Rosalyrn Burnstein
Linda Cooper
Edith Shaw
Michael & Beth Sherry
David & Carol Porter
Sam & Roberta Goller
Frank Lipsman
& Janet Mark

In Memory of
Judy Bell
Steven & Beatrice Fine
Sam & Roberta Goller

In Memory of
Moses Berger
Arthur & Margaret Berger

In Memory of
Mike Capito
Byron Capito

In Memory of
Lorraine Chadwick
Robert Corchine
& Andrea Poisner

In Memory of
Max Clemensberg
Marietta Dunn

In Memory of
Gus Eisemann
Bruce & Devra Lerner

In Memory of
Leonard Enslein
Jerald Enslein

In Memory of
Ronald Freed
Amy Freed
Randy & Dini Freed

In Memory of
Jack Glazer
Paulette Ramm

In Memory of
Serena Hammer
Hanan & Natalie
Hammer

In Memory of
Byron Hardin
Bernard & Barbara
Birnbaum
Jerald Enslein
& Hannah Harris

In Memory of
Wm Himmelstein
Ruth Byers
In Memory of
Dorothea Jagoda
I.I. & Lesly Ozar

In Memory of
Larry Kalender
Elizabeth Hess

In Memory of
David Kanofsky
David & Carol Porter
Jonathan & Ellen Chilton
Michael & Gabrielle
Handler

In Memory of
Phyllis Kalender
John Hoopes &
Lauren Mattleman
Hoopes

In Memory of
Amos & Phyllis Leitner
Edward Goldstein
& Rachel Krantz

In Memory of
Miles & Sally Ross
Bruce & Devra Lerner
Merna Siegler
Sharon & Ron Glickman
Steven & Beatrice Fine
Sam & Roberta Goller

In Memory of
Ida Kopec
Abraham &
Marlene Kopec

In Memory of
Judy Krug
Illene Harris
Caryn Hess

In Memory of
Phyllis Kalender
Alan Bowes
Neil & Blanche Sosland
Edward Goldstein
& Rachel Krantz
Michael & Gabrielle
Handler

Bruce & Devra Lerner
Joe & Fran Wolf
Steve Bond
Ann Harris

Ron & Harriet Jacobson
Merna Siegler
Arthur & Diane Federman
Sam & Roberta Goller
Noreen Greenberg
Steven & Beatrice Fine
Mark Eisemann
& Leslie Mark

Rosalyn Burnstein
Cynthia Jacobsen
Hanan & Natalie
Hammer
Mark Edelman
& Karen Lichterman
Florence Pack

In Memory of
Sam Levy
Abraham &
Marlene Kopec

In Memory of
Rae Lieberman
Rosalyrn Burnstein

In Memory of
Milton Mann
Jerry & Stacey Siegler
Sam & Roberta Goller

In Memory of
Alexander F. Muller
Max & Charlene Muller

In Memory of
Mina Nisenkier
Sam & Danielle Levine

In Memory of
Clara
Ommerman-Gilgus
Maurice Ommerman

In Memory of
Sidney Pakula
Lawrence Pakula

In Memory of
Judy Parelman
James & Alice Algie
Marshall & Hope Talbot
Bruce & Devra Lerner
Joe & Fran Wolf
Hanan & Natalie
Hammer

In Memory of
Eloyie Pepper
Scott & Sharon Jerwick

In Memory of
Ben & Helen Poisner
Robert Corchine
& Andrea Poisner

In Memory of
Golda Rosen
Nathan Rosen

In Memory of
Frances Schlozman
Bruce & Devra Lerner
Linda Cooper
Jerald Enslein
Phyllis Kalender
Sam & Roberta Goller
Allen & Gail Gutovitz

In Memory of
Esther Shapiro
Marietta Dunn

In Memory of
Inge Silverman
Craig & Amy Both

In Memory of
Victor Silverstein
Hanan & Natalie
Hammer

In Memory of
Meyer Test
Jack Test

In Memory of
Robert Tonkens
Ross Tonkens

In Memory of
Sarah Zeldin
Shirley Passman

In Memory of
Rose Zurovsky
Gertrude Epstein

In Memory of
Their daughter Laurie
Bernard & Barbara
Birnbaum

BEVERLY & HARVEY BODKER ENDOWMENT FUND

In Memory of
Gitta Azorsky
Sam Bodker
Ira Friedson
Betsy Bodker

In Memory of
Sam Bodker
Ira Friedson
Fred & Cynthia Bodker

In Honor of
Ben & Debra Rubin's
60th Wedding
Anniversary
Harvey Bodker

BUILDING FUND

In Honor of
Peter & Bev Newman
Susan & Dave Swift

CEMETERY MAINTENANCE FUND

In Memory of
Dan & Mollie Indin
Fay Belzer
Harold Berkowitz
Ron Berkowitz
Marian Berkowitz

In Memory of
Bessie Gale
Carl Gale

In Memory of
Judy Parelman
Jackie & Sheldon
Fleschman

DR. STANLEY BRAND ENDOWMENT FUND

In Memory of
Gustave Eisemann
David Kanofsky
Stanley & Marjorie Brand

EUGENE & SHIRLEY NOVORR TOTS FOR TORAH FUND

In Memory of
Max Kopin
Judy Krug
Barbara Goldstein

In Honor of
Shirley Novorr's
Speedy Recovery
Melvin & Sibby Cosner
Clarence & Alice Winer
Barbara Goldstein

In Memory of
Frances Schlozman
Johnette Zimmerman

FRANK SCHLOZMAN SCHOLARSHIP FUND

In Memory of
Rose Alisky
Irene Malyn
Michael & Wendy Malyn

In Memory of
Frances Schlozman
Debby, Sandy
& Ben Cohen
Bob & Carol Glick
Gertrude Epstein

FREIDEN FAMILY FUND

In Memory of
David Kanofsky
Judy Krug
Floyd & Bari Freiden

GALE & MAXINE GROSSMAN RELIGIOUS SCHOOL

In Honor of
The Marriage of
Jenna & Charlie Bock
Edward Goldstein
& Rachel Krantz

In Memory of
David Kanofsky
David & Lynne Bock
Harvey Grossman

In Memory of
David Kanofsky
Judy Krug
Maxine Grossman

GEORGE & ESTHER NOWICK SCHOLARSHIP FUND

In Memory of
Ruthye Nowick
Stevie & Shelly Pessin

GEORGE B. & MARIAN DURBIN PRAYER BOOK FUND

In Memory of
David Kanofsky
Judy Krug
Marlene Katz

GERSHON HADAS SCHOLARSHIP FUND

In Memory of
Gustave Eisemann
Kurt & Stephanie
Kavanaugh

HARRY PURITZ SCHOLARSHIP FUND

In Memory of
Susan Puritz
Fanny Puritz
Carl Puritz & Cynthia Ellis

HAZZAN BEN-YEHUDA'S DISCRETIONARY FUND

In Appreciation of
Hazzan Tahl Ben-Yehuda
Steven Krigel
Phyllis Kalender
Cindy Daniels
& Mark Krug
Steven & Elizabeth Levy
The Family of Judy Bell

In Honor of
Ellen Cohen's
Speedy Recovery
Larry Cohen



In Honor of
Widman B'nei Mitzvah
Andrew & Vicki Widman

**JACOB H. & ROSE
LEVINE TEACHER
DEVELOPMENT FUND**

In Honor of
Erwin Abrams's
Speedy Recovery
Roger Haberman's
Speedy Recovery

Peter & Beverly Newman

In Memory of
David Kanofsky
Peter & Beverly Newman

In Memory of
Reuben Levine
Art & Linda Levine

**JOEL POLSKY
USY FUND**

In Memory of
Irv Broudy
Janey Goodman

In Memory of
David Kanofsky
Audrey Penner
Netta & Joe Krashin

KCUSY

In Memory of
Gitta Azorsky
Eric & Miriam Kaseff

In Memory of
David Kanofsky
Judy Krug
Steve & Milisa Flekier

In Memory of
Judy Krug
Miles & Sally Ross

In Memory of
Judy Parelman
Steve & Milisa Flekier
Stacey Bell

David & Barbara Marcus
Rob & Cindy Daniels

KIDDUSH FUND

In Honor of
Bill Shapiro,
Harold Kaseff
& Barbara Katz
William & Marjorie
Schlossberg

In Memory of
Gitta Azorsky
Harold Kaseff
& Rhea Salasche

In Memory of
Byron Hardin
Arlene Shalinsky

In Memory of
David Kanofsky
Shirley Unell
Harold Kaseff
& Rhea Salasche
Stacey Bell

In Memory of
Judy Krug
Roger & Berenice
Haberman
Harold Kaseff
& Rhea Salasche

Adelle Goldstein
Stuart & Julie Krigel

In Honor of
Peter & Bev Newman's
Birthdays

Harold Kaseff
& Rhea Salasche

In Memory of
Judy Parelman

Roger & Berenice
Haberman
Harold Kaseff
& Rhea Salasche

In Memory of
Frances Schlozman
Harold Kaseff
& Rhea Salasche

**MARCIA EVELOFF
LECHEM FUND**

In Memory of
Bessie Abramson
Rob & Cindy Daniels

In Memory of
Gitta Azorsky
Ken & Sandi Lerner
Jerry & Barbara Cosner

In Memory of
Leibert Birnbaum
Gary & Patti Friedman

In Memory of
Susan Birnbaum
Miriam Birnbaum

In Honor of
Anita Daniels's
Speedy Recovery
Gary & Patti Friedman

In Memory of
David Kanofsky
Rob & Cindy Daniels

In Memory of
Judy Krug
Stacey Bell
Corrine Jacobson
Jeff & Linda Sander

Jerry & Barbara Cosner
Kurt & Stephanie
Kavanaugh

Michael & Wendy Malyn
Dolores Sosnow

Gary & Patti Friedman
Ken & Sandi Lerner
Harvey Grossman
Herb & Barb Simon

Jimmy & Sonia
Rosenbloom
Ben & Debra Rubin
Jeffrey & Wendy
Sitzmann & Family

Judy & Mickey Waldman
Marcia Lisker & Friends
Richard Fine

Sherri Eveloff Boresow
& Steve Boresow
and Family

Clarence & Alice Winer

In Honor of
Peter & Bev Newman's
Special Birthdays

Jerry & Barbara Cosner

In Memory of
Judy Parelman
Ken & Sandi Lerner
Jimmy & Sonia
Rosenbloom

In Memory of
Frances Schlozman
Harold & Linda
Schlozman

In Appreciation of
Bill Shapiro
Anonymous

In Memory of
Ester
Sam & Danielle Levine
and Henri & Carolyn
Nisenkier

**MARCUS BRAND
SCHOLARSHIP FUND**

In Memory of
Dorothea Jogada
Milton & Marilyn Ozar

**MERNA & SYLVAN
SIEGLER FUND
FOR JEWISH
CAMPING**

In Memory of
David Kanofsky
Ben & Debra Rubin

In Honor of
Judy Liberson's
Speedy Recovery
Merna Siegler

**MORRIS & ROSE
WEINBERG
ENDOWMENT
FUND FOR CAMP
SHABBAT**

In Memory of
Judy Parelman
Stephen Weinberg

In Honor of
Hazzan Tahl
Ben-Yehuda's
New Home
Stephen Weinberg

**NAMAN,
POLLACK, BLOCK
YOUTH FUND**

In Memory of
Judy Bell
Judy Krug
Judy Parelman
Jay Pollack
Randall & Elyse Block

**POLSKY RELIGIOUS
SCHOOL FUND**

In Memory of
Judy Bell
Michael & Beth Sherry

In Memory of
David Kanofsky
Brian & Karen Cole

In Memory of
Audrey Penner
Arlene Shalinsky

PRAYER BOOK FUND

In Memory of
Joseph C. Glaser
Anna Moskoviitz Glaser
Sharyn Bernstein

**RABBI
ALAN L. COHEN
SENIOR RABBI CHAIR
FUND**

In Memory of
David Kanofsky
Alan & Linda Cohen

**RABBI GLICKMAN'S
DISCRETIONARY
FUND**

In Memory of
Gitta Azorsky
Ron & Susie Goldsmith

In Memory of
Judy Bell
Jeff & Rhonda Fromm

In Memory of
Della Glass
Janet Leeds

In Appreciation of
Rabbi David Glickman
Cindy Daniels
& Mark Krug
The Family of Judy Bell
Phyllis Kalender

In Honor of
The Briss of
Micah Leo Heisler
Ben & Elena Heisler

In Memory of
Larry Kalender
Stanley Katz
Abe Yodler

Howard & Lynda
Hirsekor

In Memory of
David Kanofsky
Jeffrey & Cathy Alpert
Dolores Sosnow
Rosalynd Burnstein
Michael & Sharon
Milens
Kerry & David Kuluva

In Memory of
Jimmy & Sonia
Rosenbloom
Diane & Mark Davidner
Stuart Bodker
& Tensy Marcos-Bodker
Hannah Harris
William & Marjorie
Schlosberg

Mark & Mara Lambert
Mark & Julye Rose
Phillip & Barbara Hodes

Arlene Shalinsky
Kurt & Stephanie
Kavanaugh
Michael & Anne Jacobs
Steven & Judith Sherry

David Goldberg
Stephen Weinberg
Tiberius & Carla
Klausner

Byron & Gerri Ginsburg
Scott & Susan Krigel
Larry & Lynn Glickman
Ron & Susie Goldsmith

In Memory of
Max Kopin
Clarence & Alice Winer

In Memory of
Judy Parelman
Ron & Susie Goldsmith

In Honor of
The Widman
B'nei Mitzvah
Andrew & Vicki Widman

**ROSE FAMILY EARLY
CHILDHOOD
EDUCATION CENTER**

In Memory of
Gitta Azorsky
Stevie & Shelly Pessin

In Memory of
Byron Hardin
Jeffrey & Corrine
Blackman

In Memory of
Judy Parelman
Kerry & David Kuluva

In Memory of
Frances Schlozman
Stevie & Shelly Pessin

In Honor of
The Birth of Ezra Steven
Jimmy & Sonia
Rosenbloom

**ROSE S. LEVINE
& DORIS L. FLAM
ARTS & EDUCATION
FUND**

In Memory of
Judy Bell
Kurt & Stephanie
Kavanaugh

In Memory of
David Kanofsky
Rita Shapiro

**SACRED SPACE
CAMPAIGN**

In Appreciation of
Jonathan
& Ellen Chilton
Rabbi David Glickman

Alan Edelman
& Deborah
Sosland-Edelman
Miles & Sally Ross
Elliott & Nancy Franks

**SANFORD DUNN
MERIT SCHOLARSHIP
FUND FOR STUDY**

In Memory of
Judy Bell
Judy Krug
Judy Parelman
Patsy Shanberg

In Memory of
Judy Krug
Judy Parelman
Danny & Susie Dunn



August Anniversaries *will be celebrated on August 17.*

To sponsor a Kiddush contact Diana, 913-647-7281.

DAY	YEARS	DAY	YEARS
5	Lloyd & Jacqueline Stahl40	19	Clifford & Paula Cohen47
6	Brian & Adryan Steinberg13	19	Edward & Alicia Klein29
10	Lawrence & Nancy Carl39	19	Isac & Elaine Rosenberg46
10	William & Marjorie Schlosberg50	19	David & Gail Wainstock.29
11	Elliott & Nancy Franks46	20	Joshua & Alexis Lebowitz8
11	Allan & Marilyn Kaufman45	22	Alan & Joan Jacobson48
11	Melvyn & Janet Kogan56	23	Michael & Laurel Rogovein.60
11	Brian & Tiferet Mayer6	23	David & Frances Sternberg.49
12	Steven & Judy Berman44	25	Erwin & Phyllis Abrams.56
13	Arthur & Diane Federman47	25	Arnold & Joan Kort56
13	Jay & Katharine Levine24	26	Alexander & Peggy Davis46
14	Al & Barbara Beitchman59	26	David & Jennifer Podor40
14	Stanley & Marjorie Brand53	27	Richard & Charlotte Brockman.58
14	Jay & Terri Herman31	27	Roger & Berenice Haberman24
15	Roger & Nancy Klein48	27	Howard & Gerry Trilling52
15	Jerald & Rochelle Pelofsky54	28	Lawrence & Harriet Almaleh36
15	Michael & Beth Sherry15	28	Jeremy & Liron Applebaum8
15	Suzy Sostrin & Hunter Rainer9	28	Scott & Carla Oppenheimer31
15	Stewart & Esther Stein.48	28	Daniel & Vivien Schlozman59
16	David & Judy Jacobs62	29	Jason & Shayna Kerschner15
16	Eric Poe & Helaine Cohn21	29	Stephen & Ellen Kort48
17	Jeremy & Danielle Antes11	30	Robert & Evie Grant.32
17	Byron & Gerri Ginsburg33	30	Arnold & Dorene Manvitz.55
17	Stephen & Toba Maslan44	30	David & Gerri Ruben27
18	Alan & Tina Chapman56	31	Jeffrey & Corrine Blackman34
18	Harold & Linda Schlozman51	31	Marc Hammer & Alana Muller22
18	Robert & Aletha Simon56	31	Michael & Julie Levine22



Bar Mitzvah

Eli Jacobson

August 17 / 16 Av

Eli Jacobson is the son of Beth Jacobson and Eric Jacobson. He is the grandson of Sharon and Alvin Cohen and Greg Zellhofer of Overland Park, KS. He attends Overland Trail Middle School. He enjoys being a member of Boy Scouts - Troop 61, attending Herzl Camp, and participating in Musical Theater through The Culture House. His Bar Mitzvah project is volunteering for ScrapsKC - their mission is to care for Kansas City's environment, education and homeless through creative reuse.



Bat Mitzvah

Gracie Ryan Cowman

August 31 / 30 Av

Gracie is the daughter of Kelley (Fried) Cowman and Kurt Cowman. She is the granddaughter of Helene and Bernie Fried of Overland Park, KS, Cheri and Steve Cowman of Paola, KS, and LeAnne and Dennis Bova of Spring Hill, KS. Gracie attends California Trail Middle School and loves to read, write stories, play the viola and spend time with family and friends. For her Bat Mitzvah project, Gracie is building a playhouse to be donated to the Rose Family Early Childhood Education Center.



Congregation Events - See each department for its activities.

RFECEC = Rose Family Early Childhood Education Center
PRS = Polsky Religious School

1 29 Tammuz	THURSDAY	12 11 Av	MONDAY CBS Board Meeting 6:00 PM at CBS Conference Room	22 21 Av	THURSDAY Preschool Visitors Day 10:00 AM - 11:00 PM
2 1 Av	FRIDAY	13 12 Av	TUESDAY PRS Gan (Kdgt) Parents Meeting . 7:00 PM	23 22 Av	FRIDAY First Day of RFECEC Classes... 9:00 AM - 12:00 PM
3 2 Av	SATURDAY Morning Service 9:30 AM Minchah/Ma'ariv/Havdalah 8:10 PM 9:10 PM Havdalah Shavua Tov!	14 13 Av	WEDNESDAY Sisterhood Prospective Member Event 6:00 PM at Evereve in Town Center Crossing Sisterhood Book Club 7:00 PM at Nata Scharf's home	24 23 Av	SATURDAY Morning Service 9:30 AM Minchah/Ma'ariv/Havdalah 7:44 PM 8:44 PM Havdalah Shavua Tov!
4 3 Av	SUNDAY	15 14 Av	THURSDAY Preschool Teacher In-Service 9:00 AM - 1:00 PM	25 24 Av	SUNDAY Community-wide Day of Discovery 9:00 AM at Jewish Community Campus
5 4 Av	MONDAY	16 15 Av	FRIDAY Preschool Teacher In-Service 9:00 AM - 12:00 PM	26 25 Av	MONDAY
6 5 Av	TUESDAY	17 16 Av	SATURDAY Anniversary Shabbat Parashat Hashavua 9:00 AM Combined Goldsmith and Library Minyan 9:30 AM Tefillateinu Bar Mitzvah of Eli Jacobson 10:00 AM Minchah/Ma'ariv/Havdalah 7:53 PM 8:53 PM Havdalah Shavua Tov!	27 26 Av	TUESDAY
7 6 Av	WEDNESDAY	18 17 Av	SUNDAY PRS Teacher In-Service 9:00 AM - 2:00 PM	28 27 Av	WEDNESDAY Prayer Partners 10:00 AM in Boardroom
8 7 Av	THURSDAY	19 18 Av	MONDAY Child CPR/First Aid... 9:00 AM - 1:00 PM Preschool Teacher In-Service 9:00 AM - 1:00 PM	29 28 Av	THURSDAY
9 8 Av	FRIDAY	20 19 Av	TUESDAY Preschool Teacher In-Service 9:00 AM - 1:00 PM	30 29 Av	FRIDAY
10 9 Av	SATURDAY Birthday Shabbat Morning Service 9:30 AM Minchah/Ma'ariv/Havdalah 8:02 PM 9:02 PM Havdalah Shavua Tov! Community-wide Tisha B'Av Program/Services... 9:45 PM at CBS Goldsmith Hall	21 20 Av	WEDNESDAY Preschool Teacher In-Service 9:00 AM - 1:00 PM	31 30 Av	SATURDAY NO LIBRARY MINYAN Bat Mitzvah of Gracie Cowman 9:30 AM Morning Service 9:30 AM Minchah/Ma'ariv/Havdalah 7:33 PM 8:33 PM Havdalah Shavua Tov!
11 10 Av	SUNDAY Tisha B'Av/Shacharit Services 8:00 AM at CBS Goldsmith Hall				

Candle Lighting Blessing

ברוך אתה ה' אלקינו מלך העולם אשר קדשנו במצותיו וצונו להדליק נר של שבת.

Barukh ata Adonai Eloheinu melek ha'olam, asher kiddeshanu b'mitzvotav vetzivanu lehadlik ner shel Shabbat.

Service Schedule

Shabbat CBS		Weekdays	
Kabbalat Shabbat	FRIDAY 6:00 PM	Minchah	SUNDAY-THURSDAY 6:00 PM
Main Service	SATURDAY 9:30 AM	Shacharit	MONDAY-FRIDAY 7:00 AM
Library Minyan	SATURDAY 9:30 AM	Shabbat Services and Sunday morning Shacharit will be held at CBS, 14200 Lamar.	
Minchah	AUGUST 3 8:10 PM	Weekday Minyan will be held at Appleman Synagogue, Village Shalom , 5500 W. 123rd St.	
Minchah	AUGUST 10 8:02 PM	Please Note: On Tuesday, Wednesday and Fridays, Ohev Sholom will join us for the Morning Minyan.	
Minchah	AUGUST 17 7:53 PM		
Minchah	AUGUST 24 7:44 PM		
Minchah	AUGUST 31 7:33 PM		
Shacharit	SUNDAY 8:00 AM		



David M. Glickman
Senior Rabbi

Hazzan Tahl Ben-Yehuda
Director of Congregational Learning

Bernie Fried
Executive Director

Alan L. Cohen
Rabbi Emeritus

Judy Jacks Berman
Director, RFECEC

Art Federman
President

The Congregation Beth Shalom Scroll (USPS531-420) is published monthly by Congregation Beth Shalom, 14200 Lamar, Overland Park, KS 66223. Annual Subscription \$24.00. Periodical Postage Paid in Kansas City, MO.

DATED MATERIAL

POSTMASTER: Send address changes to CONGREGATION BETH SHALOM SCROLL, 14200 Lamar, Overland Park, KS 66223.

Congregation Beth Shalom, an egalitarian Conservative synagogue, is a welcoming community of individuals from diverse backgrounds, strengthening connections with God, Torah and the Jewish people through communal commitment to prayer, study and acts of loving kindness.

August Highlights

**Community-wide
Tisha B'Av Program/Services
at CBS Goldsmith Hall**
August 10

**Tisha B'Av/Shacharit Services
at CBS Goldsmith Hall**
August 11

First Day of RFECEC Classes
August 23

**Community-wide
Day of Discovery
at Jewish Community Campus**
August 25

Scroll Deadline
Submit articles to the Administrative office.
August 10 for September

Sisterhood Gift Shop Hours
SEE PAGE 6

Office Hours

MONDAY-THURSDAY 8:30 AM - 5 PM
FRIDAY 8:30 AM - 3 PM

Closed on Federal Holidays

Mt. Carmel Cemetery Hours 913-218-8629

MONDAY & WEDNESDAY 8:00 AM - 4:30 PM
TUESDAY & THURSDAY CLOSED
SATURDAY CLOSED
FRIDAY & SUNDAY 8:00 AM - 4:00 PM
NATIONAL HOLIDAYS 9:00 AM - 4:00 PM

Exceptions: Thanksgiving, Christmas Day, New Year's Day & Easter

JEWISH HOLIDAYS CLOSED

Parashat HaShavua *For more information, contact Svetlana Sorkin at 913-393-1715 or saraliorasedu@hotmail.com.*

Parashat HaShavua is an ongoing, monthly program taking place every third Shabbat of the month at 9:00 am in the conference room. The goal of this program is to engage its participants in a stimulating discussion of the weekly Torah portion in a friendly atmosphere, where the difference of opinions is respected and questions are encouraged.

The next session will take place on August 17, when the **PARSHA OF THE WEEK: VAETCHANAN** will be discussed. An informal atmosphere and deep level of discussion are the trademarks of this gathering. No prior experience is required, and everybody is welcome to join.

