

JOIN OUR FAMILY...

Rose Family Early Childhood

**AT OUR PRESCHOOL EVERYDAY IS A DAY
FOR LEARNING, LAUGHING, AND PLAYING**

To enroll your child and/or schedule a tour of our school
please contact Judy Jacks Berman, Early Childhood
Director at (913) 647-7287 or jjb@bethshalomkc.org

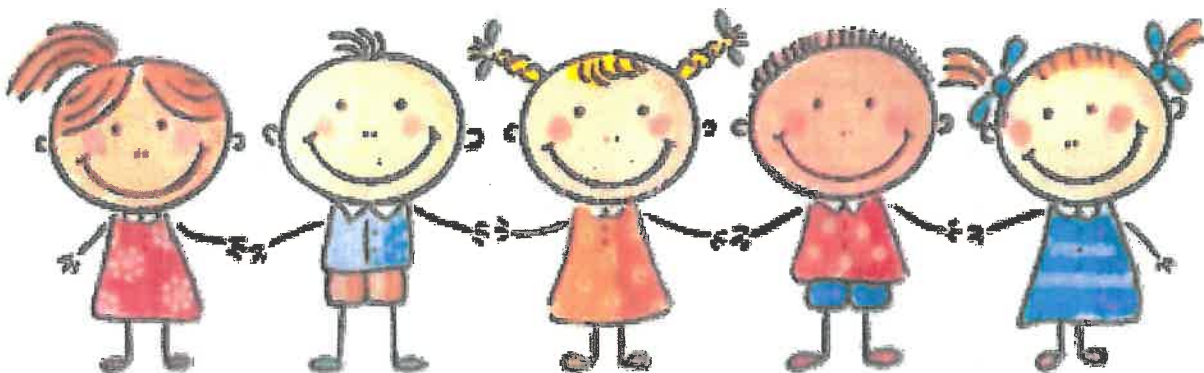


It's never a dull day!

WHY CHOOSE OUR PRESCHOOL?

1. Our teachers have superior education credentials.
2. We offer a safe and nurturing environment with low teacher child class ratios.
3. Our indoor and outdoor playgrounds allow children gross motor movement year round.
4. We invite special guests and activities to our school throughout the year.
5. Optional extended hours with enrichment programming (enrolled siblings receive a 25% discount).
6. All children in our school must be vaccinated so that we can provide a healthy environment for all.
7. Sibling tuition discount of 5%.

Contact us at 913-647-7287 or jjb@bethshalomkc.org for questions or concerns. To see more of our school, please visit www.bethshalomkc.org and click Preschool.





2019/2020 Enrollment Form

Child's Name _____ Birth date _____ Sex M or F

Parent(s)' Name _____

Address _____

Are you a Beth Shalom Congregant? _____ Yes _____ No

If no: Member of _____ Congregation OR _____ Unaffiliated

Parent 1 Cell: _____ E-mail address _____

Parent 2 Cell: _____ E-mail address _____

For the 2019/2020 school year, my child will be:

Toddlers: _____ 18 months by 8/31/19 for Fall OR _____ 18 months by 1/1/20 for January

_____ 2 Day Tues/Thurs _____ 3 Day Mon/Wed/Fri _____ 5 Day Mon - Fri

Mini-school: 24 months by 8/31/19

_____ 2 Day Tues/Thurs _____ 3 Day Mon/Wed/Fri _____ 5 Day Mon - Fri

3's: 3 yrs. by 8/31/19 (This is a 4 or 5 day program)

_____ 4 Days Tues - Fri _____ 5 Days Mon-Fri

PreK: _____ 4 yrs. old by 8/31/19 (This is a 5 day program)

Deposit: A one hundred fifty (\$150) dollar non-refundable deposit check is required to validate this registration form and to hold space for your child. The deposit is applied toward the total fee if it is received by April 18, 2019.

Scholarships: There are funds available to **members** of Beth Shalom Synagogue who demonstrate a need for tuition assistance. Scholarship applications may be obtained in the School Office. Completed applications, **with a current year 1040 tax return form**, must be received no later than June 28, 2019.

I understand the regulations as described above.

Signature

Date

Please use the back page to share with us any additional info regarding your child for next year. Please keep in mind that we will try to honor your requests but that it doesn't guarantee them. You may use the back if you run out of room.

For Office Use Only:

Date turned in

Ck. #

Start Date



Tuition Rates

Tuition 2019/2020

Toddler, Mini-School & 3's School Hours: 9am – 12pm

Pre-K School Hours: 9am – 1:30pm on Monday – Thursday & 9am – 12pm on Friday

Toddlers (Tuition for the Year):

Open to children who are 18 months by 8/31/19

January Toddlers – Tuition

Open to children who are 18 months by 1/1/20

	<u>Member/Affiliate</u>	<u>Non-Member</u>
2 Days/week	\$2,440	\$3,055
3 Days/week	\$3,670	\$4,580
5 Days/week	\$5,360	\$6,700

	<u>Member/Affiliate</u>	<u>Non-Member</u>
2 Days/week	\$1,340	\$1,665
3 Days/week	\$2,010	\$2,520
5 Days/week	\$2,950	\$3,700

Mini School (Tuition for the Year): Open to children who turn **2** on or before 8/31/19

	<u>Member/Affiliate</u>	<u>Non-Member</u>
2 Days/week	\$2,230	\$2,800
3 Days/week	\$3,300	\$4,125
5 Days/week	\$4,910	\$6,110

3's (Tuition for the Year): Open to children who turn **3** on or before 8/31/19

	<u>Member/Affiliate</u>	<u>Non-Member</u>
4 Days/week	\$3,565	\$4,450
5 Days/week	\$4,180	\$5,200

PreK (Tuition for the Year): Open to children who turn **4** on or before 8/31/19

	<u>Member/Affiliate</u>	<u>Non-Member</u>
5 Days/week	\$5,390	\$6,700

Affiliate Rate: Parents must be current members of another synagogue in Kansas or Missouri and be "grandfathered in" to this rate.

All Children: Activity fees per child: \$100 Full Year. \$50 Second Semester

A 5% discount will apply to additional siblings enrolled

Extra Programs (optional)



(EB) Early Birds

Monday through Friday, 8:00am - 9:00am
\$7.00/day

(EDO) Early Drop-Off

Monday through Friday, 8:30am – 9:00am
\$4.00/day

(S&P) Stay & Play

Monday through Friday, 12:00pm – 12:30pm
\$4.00/day

(LB) Lunch Bunch

Monday through Thursday, 12:00pm - 1:30pm
\$8.00/day

(ARF) Afternoons 'R' Fun

Monday-Thursday, 12:00pm-3:15pm
\$20/day

(ARFPK) Afternoons 'R' Fun for Pre-K

Monday-Thursday, 1:30pm-3:15pm
\$13.00/day

(This option is only available to Pre-K students)

NEW:

*Sibling/second child gets 25% off their extra program